



COMMERCIAL RETAIL LAND

FOR SALE & LEASE

# ±2.3-ACRE VACANT LAND

2265 Route 37 West, Manchester, NJ 08759

*For More Information, Contact*

**JOHN LONGO**

*Senior Sales Associate*

[jlongo@blauberg.com](mailto:jlongo@blauberg.com)

973.379.6644 x129



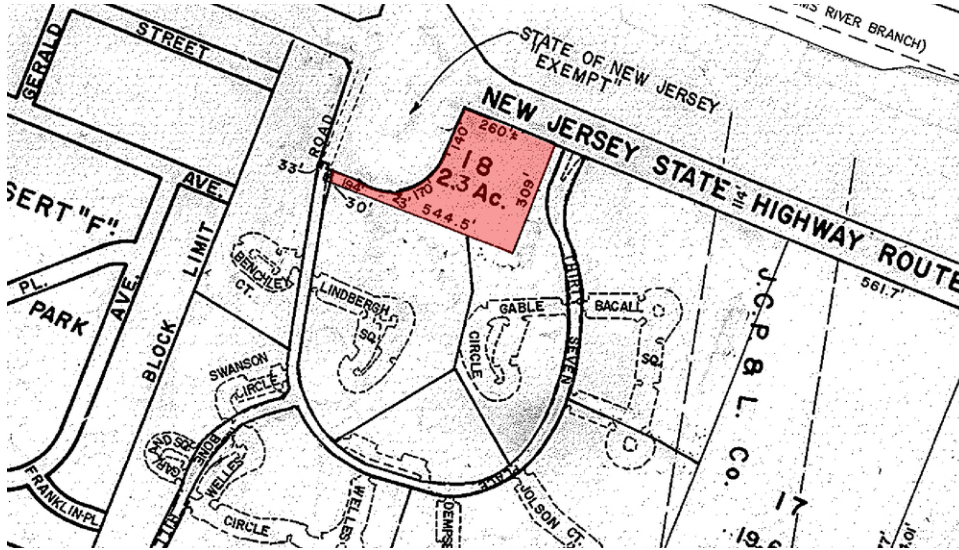
**THE BLAU & BERG COMPANY**

830 Morris Turnpike, Suite 201, Short Hills, NJ 07078

[www.blauberg.com](http://www.blauberg.com)

# ±2.3-ACRE VACANT LAND

2265 Route 37 West, Manchester, NJ 08759



## PROPERTY DESCRIPTION

±2.32 Acres Vacant Commercial Land & C-Liquor License

## LOCATION DESCRIPTION

A Jug Handle with Access to Side Street for Corner Ingress and Egress

Corner Access to Traffic Light

±3.5 Miles from Exit 82A of Garden State Parkway

East of Lakehurst Naval Air Base

## OFFERING SUMMARY

Sale Price / Lease Rate:	Please Call
C-Liquor License Price:	Please Call
Lot Size:	2.32 Acres

## PROPERTY HIGHLIGHTS

- ±2.3 Acres Vacant Land (Block 44, Lot 18)
- Over 260 Feet Frontage Along Route 37 West
- Zoned HD-3
- Permitted Uses Include Retail Shopping Centers, Bank, Fast Food, Daycare, Medical and Non-Medical Offices, Automotive, Bar / Restaurant, Liquor Store, C-Store and Related Uses
- Traffic Count Approx. 35,000 Cars Daily
- Utilities: City Water, Sewer in Street
- Owner Offering C-Liquor License

For More Information, Contact

**JOHN LONGO**

Senior Sales Associate

jlongo@blauberg.com

973.379.6644 x129

830 Morris Turnpike  
Suite 201  
Short Hills, NJ 07078

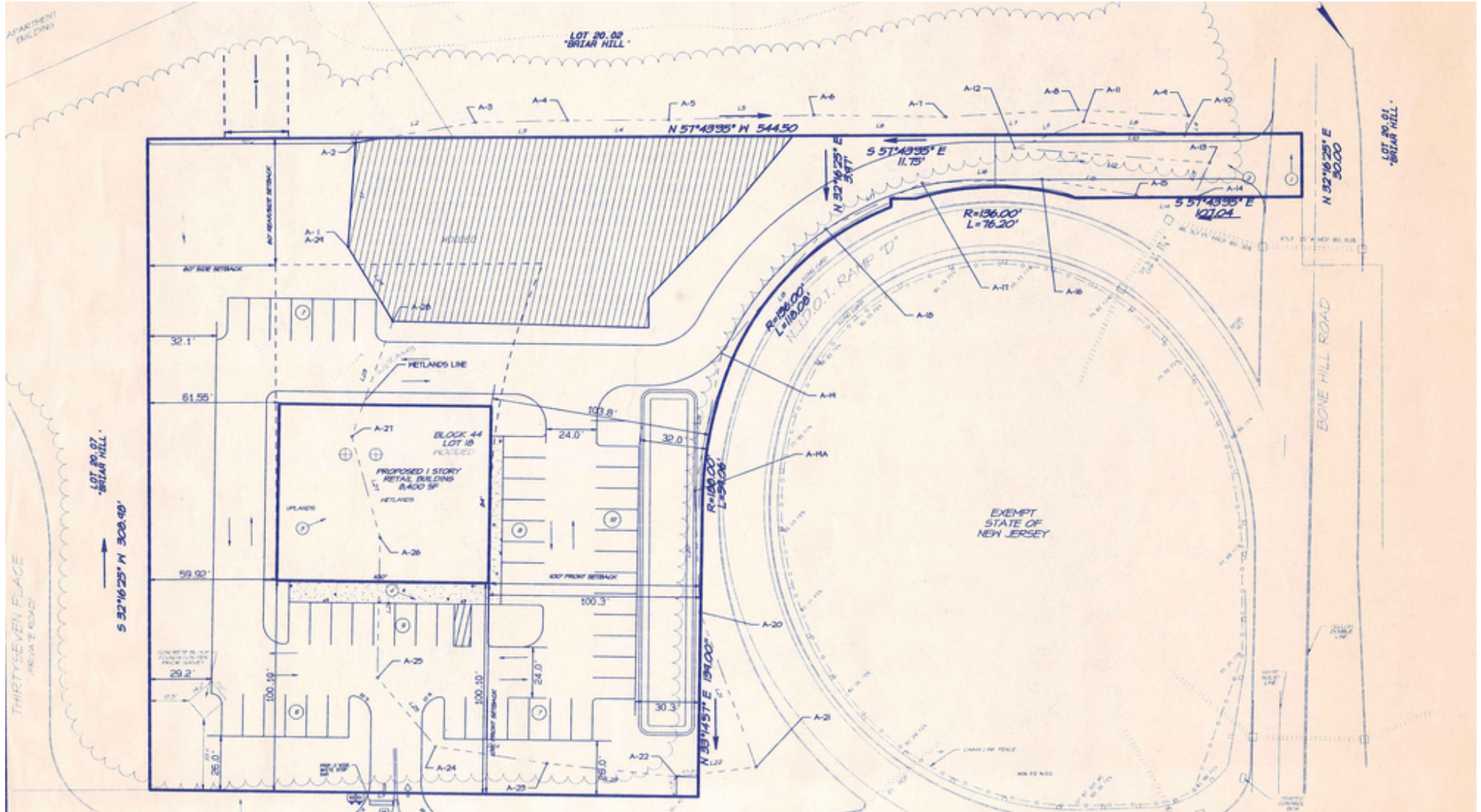
[www.blauberg.com](http://www.blauberg.com)



The information contained herein has been obtained from sources considered to be reliable, but no guarantee of its accuracy is made by this company. In addition, no representation is made respecting zoning, condition of title, dimensions, or any matters of a legal or environmental nature. Such matters should be referred to legal counsel for determination. Terms and conditions are subject to change without prior notice. Subject to errors and omissions.

# ±2.3-ACRE VACANT LAND

2265 Route 37 West, Manchester, NJ 08759



Preliminary Site Plan: ±8,000 SF Retail Building (80' x 100') with 49 Parking Spaces (Avoiding CAFRA)

For More Information, Contact  
**JOHN LONGO**  
 Senior Sales Associate  
 jlongo@blauberg.com  
 973.379.6644 x129

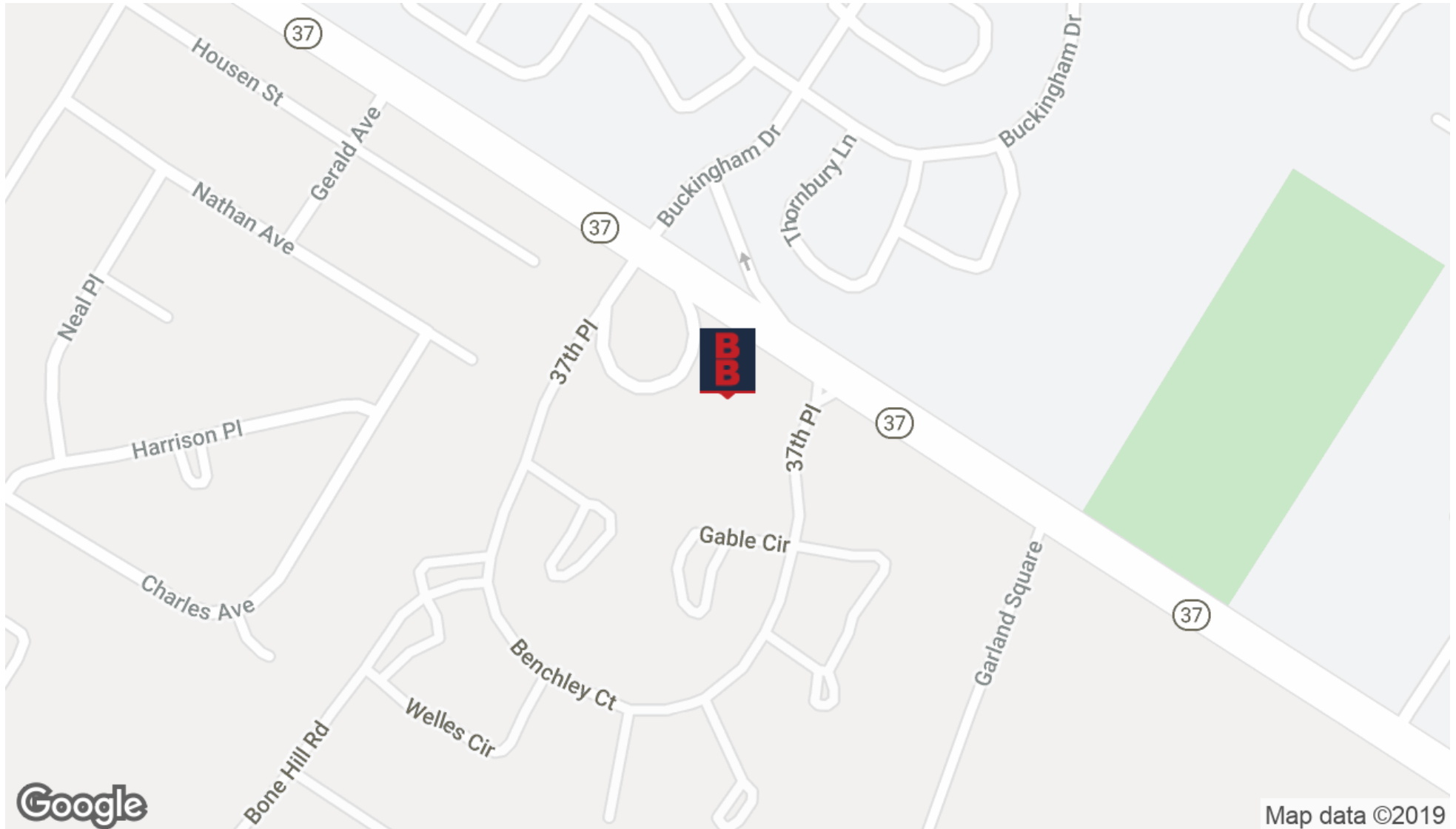
830 Morris Turnpike  
 Suite 201  
 Short Hills, NJ 07078  
[www.blauberg.com](http://www.blauberg.com)



The information contained herein has been obtained from sources considered to be reliable, but no guarantee of its accuracy is made by this company. In addition, no representation is made respecting zoning, condition of title, dimensions, or any matters of a legal or environmental nature. Such matters should be referred to legal counsel for determination. Terms and conditions are subject to change without prior notice. Subject to errors and omissions.

# ±2.3-ACRE VACANT LAND

2265 Route 37 West, Manchester, NJ 08759



For More Information, Contact

**JOHN LONGO**

Senior Sales Associate

[jlongo@blauberg.com](mailto:jlongo@blauberg.com)

973.379.6644 x129

830 Morris Turnpike  
Suite 201  
Short Hills, NJ 07078

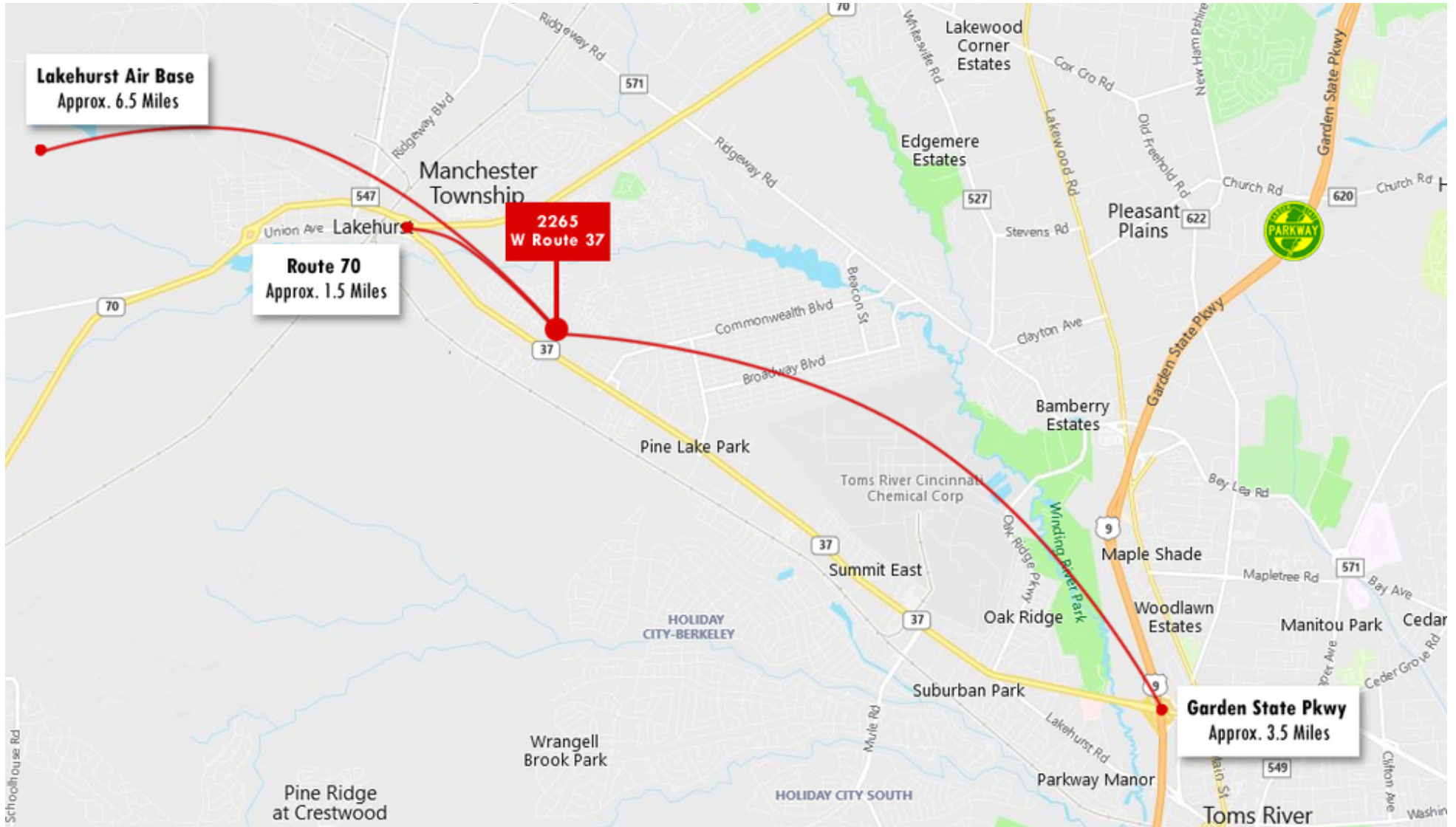
[www.blauberg.com](http://www.blauberg.com)



The information contained herein has been obtained from sources considered to be reliable, but no guarantee of its accuracy is made by this company. In addition, no representation is made respecting zoning, condition of title, dimensions, or any matters of a legal or environmental nature. Such matters should be referred to legal counsel for determination. Terms and conditions are subject to change without prior notice. Subject to errors and omissions.

# ±2.3-ACRE VACANT LAND

2265 Route 37 West, Manchester, NJ 08759



For More Information, Contact  
**JOHN LONGO**  
 Senior Sales Associate  
 jlongo@blauberg.com  
 973.379.6644 x129

830 Morris Turnpike  
 Suite 201  
 Short Hills, NJ 07078  
[www.blauberg.com](http://www.blauberg.com)



The information contained herein has been obtained from sources considered to be reliable, but no guarantee of its accuracy is made by this company. In addition, no representation is made respecting zoning, condition of title, dimensions, or any matters of a legal or environmental nature. Such matters should be referred to legal counsel for determination. Terms and conditions are subject to change without prior notice. Subject to errors and omissions.

# ±2.3-ACRE VACANT LAND

2265 Route 37 West, Manchester, NJ 08759

Radius	1 Mile	3 Mile	5 Mile
<b>Population:</b>			
2024 Projection	4,582	26,546	71,751
2019 Estimate	4,654	26,271	71,065
2010 Census	5,586	27,884	75,740
Growth 2019-2024	(1.55%)	1.05%	0.97%
Growth 2010-2019	(16.68%)	(5.78%)	(6.17%)
2019 Population Hispanic Origin	346	1,949	4,486
<b>2019 Population by Race:</b>			
White	4,149	23,616	64,938
Black	330	1,511	3,001
Am. Indian & Alaskan	12	52	127
Asian	87	643	2,059
Hawaiian & Pacific Island	5	19	29
Other	71	429	910
<b>U.S. Armed Forces:</b>	<b>24</b>	<b>53</b>	<b>75</b>
<b>Households:</b>			
2024 Projection	2,155	12,224	34,912
2019 Estimate	2,213	12,182	34,754
2010 Census	2,788	13,392	37,982
Growth 2019 - 2024	(2.62%)	0.34%	0.45%
Growth 2010 - 2019	(20.62%)	(9.04%)	(8.50%)
Owner Occupied	1,803	10,480	30,904
Renter Occupied	410	1,702	3,850
<b>2019 Avg Household Income</b>	<b>\$62,333</b>	<b>\$66,931</b>	<b>\$65,101</b>
<b>2019 Med Household Income</b>	<b>\$45,152</b>	<b>\$46,428</b>	<b>\$42,953</b>
<b>2019 Households by Household Inc:</b>			
<\$25,000	530	2,879	9,459
\$25,000 - \$50,000	656	3,517	9,891
\$50,000 - \$75,000	382	1,967	5,266
\$75,000 - \$100,000	262	1,364	3,657
\$100,000 - \$125,000	155	922	2,317
\$125,000 - \$150,000	120	664	1,473
\$150,000 - \$200,000	55	448	1,349
\$200,000+	53	421	1,342

For More Information, Contact

**JOHN LONGO**

Senior Sales Associate

jlongo@blauberg.com

973.379.6644 x129

830 Morris Turnpike  
Suite 201  
Short Hills, NJ 07078

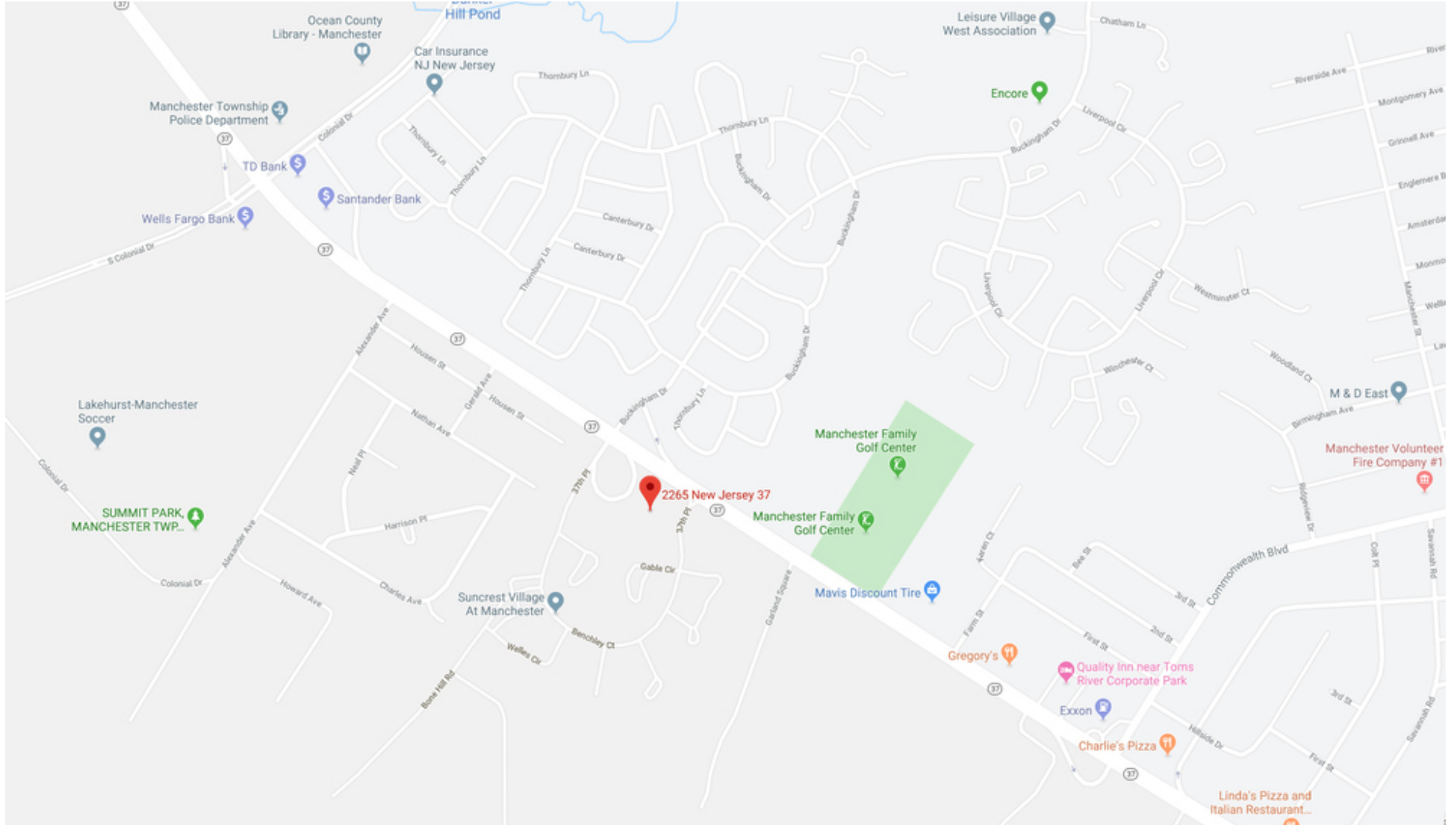
[www.blauberg.com](http://www.blauberg.com)



The information contained herein has been obtained from sources considered to be reliable, but no guarantee of its accuracy is made by this company. In addition, no representation is made respecting zoning, condition of title, dimensions, or any matters of a legal or environmental nature. Such matters should be referred to legal counsel for determination. Terms and conditions are subject to change without prior notice. Subject to errors and omissions.

# ±2.3-ACRE VACANT LAND

2265 Route 37 West, Manchester, NJ 08759



For More Information, Contact

**JOHN LONGO**

Senior Sales Associate

jlongo@blauberg.com

973.379.6644 x129

830 Morris Turnpike  
Suite 201  
Short Hills, NJ 07078

[www.blauberg.com](http://www.blauberg.com)



The information contained herein has been obtained from sources considered to be reliable, but no guarantee of its accuracy is made by this company. In addition, no representation is made respecting zoning, condition of title, dimensions, or any matters of a legal or environmental nature. Such matters should be referred to legal counsel for determination. Terms and conditions are subject to change without prior notice. Subject to errors and omissions.

# ±2.3-ACRE VACANT LAND

2265 Route 37 West, Manchester, NJ 08759



## JOHN LONGO

Senior Sales Associate

[jlongo@blauberg.com](mailto:jlongo@blauberg.com)

**Direct:** 973.379.6644 x129 | **Cell:** 908.803.1876

## PROFESSIONAL BACKGROUND

John, Sales Associate for The Blau & Berg Company, is responsible for representing both buyers and sellers, along with landlords and tenants in all facets of commercial real estate transactions. After a successful more than 20-year career on Wall Street as a financial sales-trader, a career change was in order and commercial real estate has been a natural transition. John has been able to use his financial knowledge and sales skills he developed on Wall Street to carve out a promising career in commercial real estate. While on Wall Street, John was able to continually generate revenue in excess of \$10,000,000 per year and he has brought that same skill set to The Blau & Berg Company.

## EDUCATION

Rutgers University – Bachelor of Business Administration, Economics

*For More Information, Contact*

**JOHN LONGO**

*Senior Sales Associate*

[jlongo@blauberg.com](mailto:jlongo@blauberg.com)

973.379.6644 x129

830 Morris Turnpike  
Suite 201  
Short Hills, NJ 07078

[www.blauberg.com](http://www.blauberg.com)



The information contained herein has been obtained from sources considered to be reliable, but no guarantee of its accuracy is made by this company. In addition, no representation is made respecting zoning, condition of title, dimensions, or any matters of a legal or environmental nature. Such matters should be referred to legal counsel for determination. Terms and conditions are subject to change without prior notice. Subject to errors and omissions.