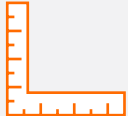










**40**  
LANDOVER PKWY  
HAWTHORN WOODS, IL

**1,600 SF End Unit Available For Lease**

-  1,600 Square Feet Office
-  High Quality Build-Out
-  Four Private Offices
-  Large Conference Room
-  3.5 Miles From South Rand Road
-  Ample Parking Spaces
-  Low Lake County Taxes



FOR MORE INFORMATION, PLEASE CONTACT:  
**Ron Roberti**  
Vice President  
847.649.2666  
RRoberti@LPcommercial.com

---

## Address

---

- ◆ 40 Landover Pkwy Suite I  
Hawthorn Woods, IL 60047

---

## Space Highlights

---

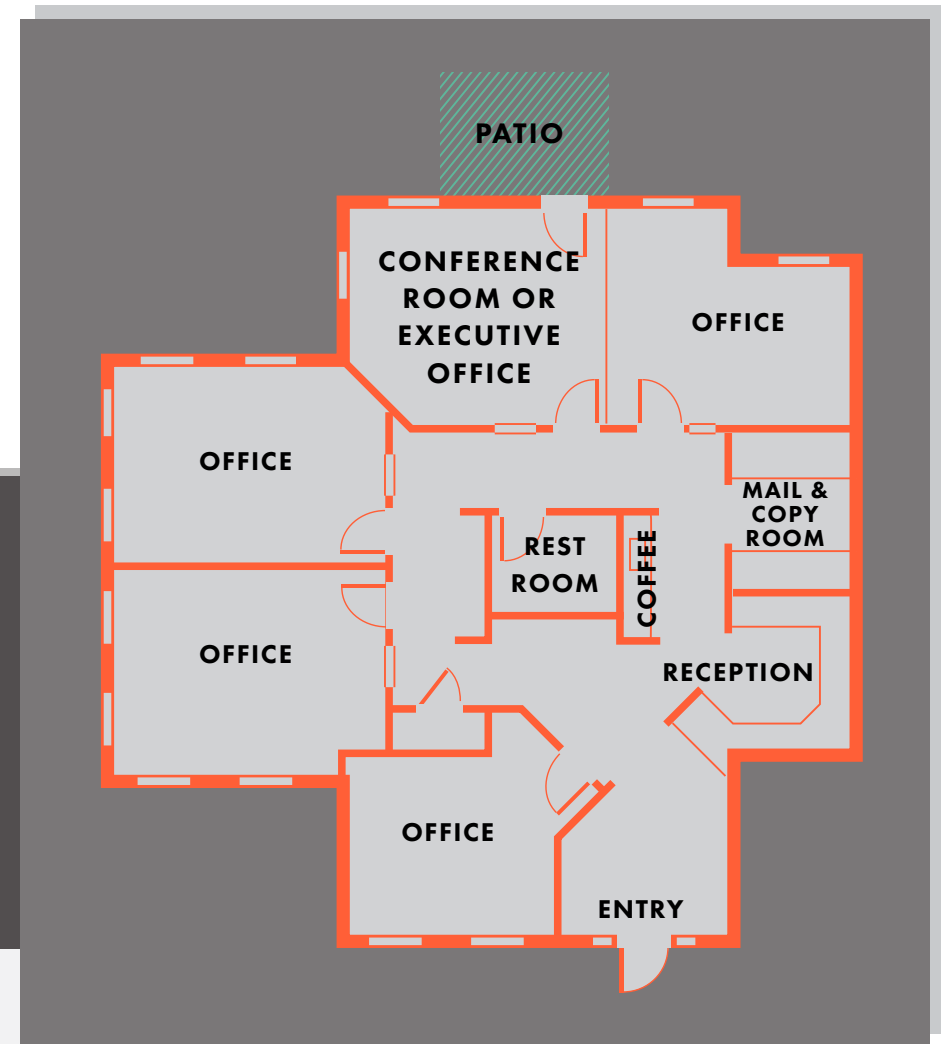
- ◆ 1,600 Square Feet Office Space
- ◆ High Quality Build-Out
- ◆ Spacious Entry
- ◆ Four Private Office & Large Executive Office or Conference Room with Exit to Patio
- ◆ End Unit, Great Window Line, Tranquil Setting
- ◆ 9' Dry-Walled Ceilings with Recessed Lights
- ◆ 7' Doors and Side Panels
- ◆ Attic Storage
- ◆ Date Available: August 1, 2018

---

## Asking Rate

---

- ◆ \$23.00/SF/YR Modified Gross





N FAIRFIELD RD

N MIDLOTHIAN RD

N OLD McHENRY RD

HAWTHORN WOODS  
FAMILY DENTAL

INLAND BANK

THE  
GODDARD SCHOOL  
FOR EARLY CHILDHOOD DEVELOPMENT

40 LANDOVER PKWY  
HAWTHORN WOODS, IL 60047

FOGLIA YMCA  
OF METRO CHICAGO



---

## Photos

---

Clockwise from Top Right

- ◆ Conference Room / Executive Office
- ◆ Reception
- ◆ Private Office
- ◆ Seven Foot Doors and Sidelights





### Disclaimer

The information contained in the memorandum has been obtained from sources we believe to be reliable; however, Landmark Partners Commercial Real Estate, LLC, or any of their officers, employees, or agents, has not verified, and will not verify, any of the information contained herein and makes no warranty or representation whatsoever regarding the accuracy or completeness of the information provided. This memorandum does not purport to be all-inclusive or to contain all the information which prospective lessee or purchaser may desire. References to square footage or age are approximate. No legal liability is assumed or shall be implied with respect thereto.

The owner expressly reserves the right at its sole discretion to reject any or all proposals or expressions of interest in the property and to terminate discussions with any party at any time with or without notice.

### Agency Disclosure:

Ron Roberti ("Licensee") of Landmark Partners Commercial Real Estate, LLC is acting solely on behalf of the Owner or Lessor of the real estate and any information given to the Licensees by the Purchaser/Lessee may be disclosed to the Owner/Lessor.

### For more information, please contact:

<b>Ron Roberti</b> Vice President	 847.649.2666  RRoberti@LPcommercial.com
--------------------------------------	---



1699 E. Woodfield Road | Suite 202 | Schaumburg Illinois 60173