

## For Sale or Lease

### Property Description

This nearly 10,000 square foot restaurant, in one of Lafayette's oldest buildings, offers a variety of ambient settings and unique twists of decor that target the tastes of several demographics. The space includes a lounge on each floor, a rooftop outdoor eating and entertainment space, and private rooms for business and social gatherings. This building has an artful touch and extraordinary interior design throughout.

This property, which is listed on the Lafayette City-Parish Register of Historic Places, was constructed in 1917 to serve as the Masonic Hope Lodge #145. It includes all furnishings and equipment, lending it the ability to serve as a restaurant, lounge, catering facility and tourist attraction.

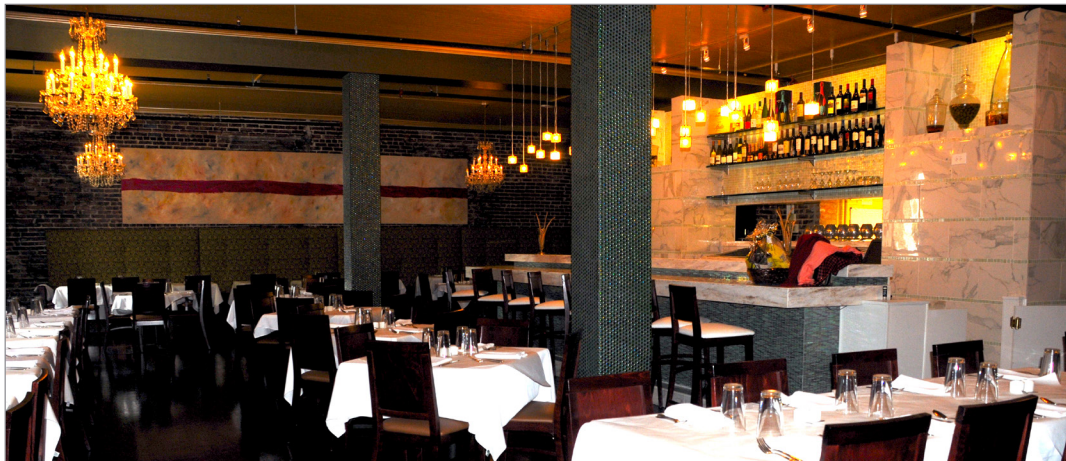
Downtown Lafayette hosts a variety of annual festivals and events, including the 5 day Festival Internationale de Louisiane which draws over 100,000 visitors to the downtown area. Downtown Lafayette also offers a wide array of retail establishments, museums, hotels and special events that attract tourists year round.

### Sale Price

- \$1,950,000

### Lease Price

- \$12 PSF





*Overview*

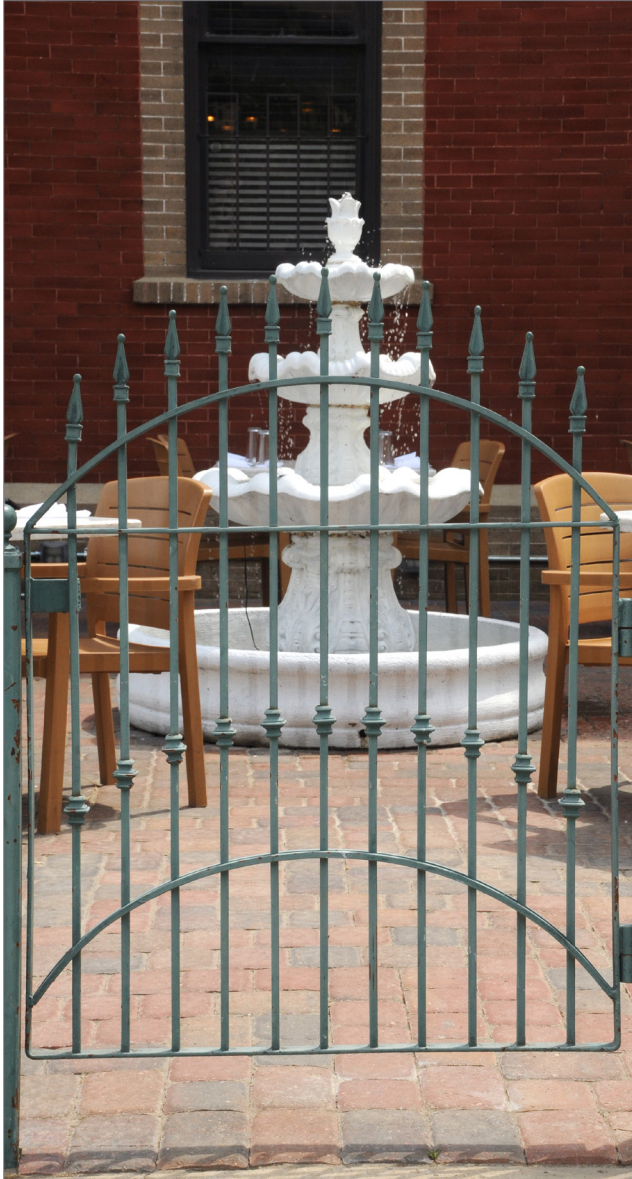
**Photos**

*Photos*

*1st Floor*

*2nd Floor*

*Demographics*





Overview

Photos

Photos

1st Floor

2nd Floor

Demographics



Overview

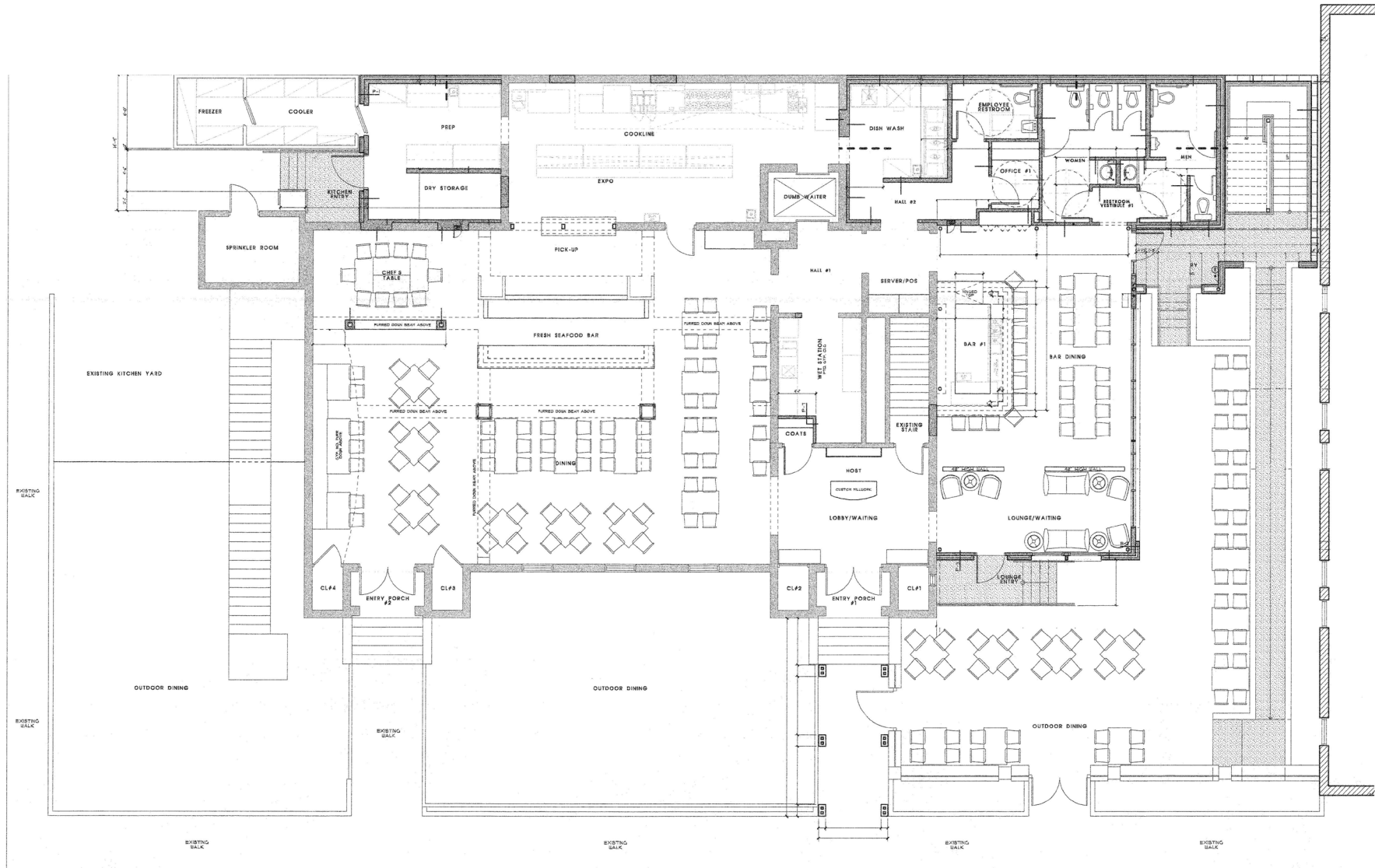
Photos

Photos

**1st Floor**

2nd Floor

Demographics



FIRST FLOOR PLAN  
SCALE: 1/4" = 1'-0"



Overview

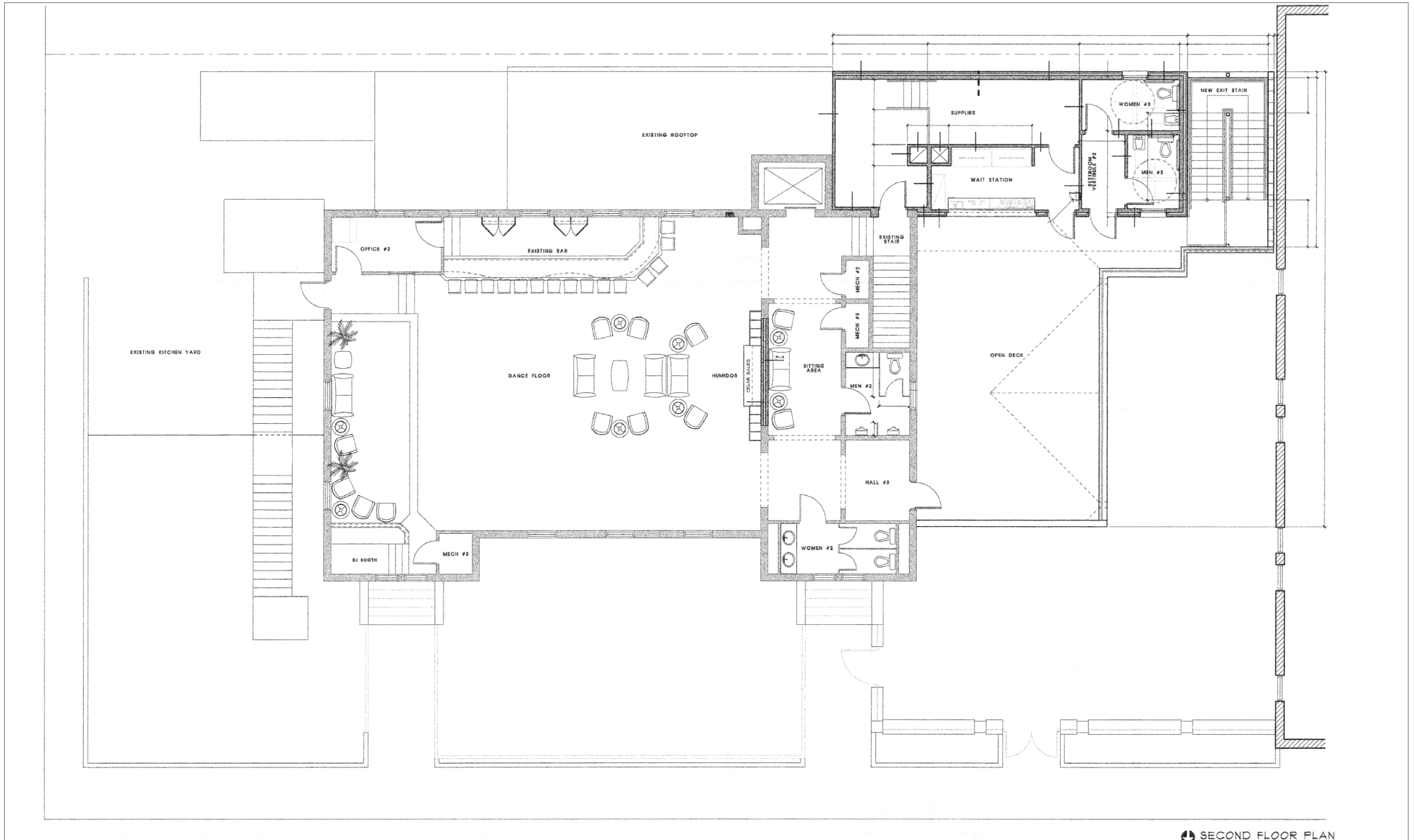
Photos

Photos

1st Floor

**2nd Floor**

Demographics



SECOND FLOOR PLAN

Overview

Photos

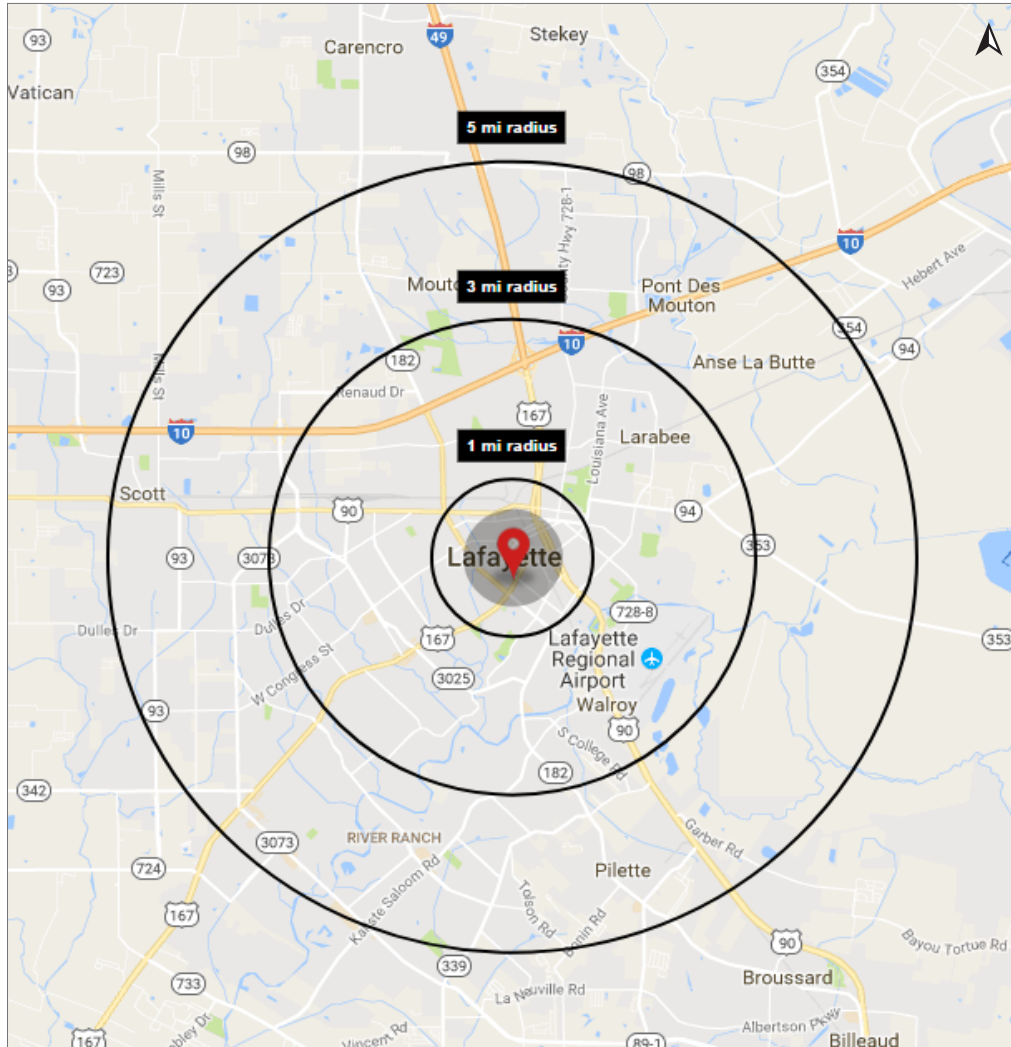
Photos

1st Floor

2nd Floor

**Demographics**

## Demographic Map



### 2017 Demographics

	1 mi.	3 mi.	5 mi.
Population	13,714	63,974	126,510
Households	5,224	26,396	53,449
Proj. 5-Yr. Growth	2.3%	1.9%	1.8%
Avg. HH Income	\$51,610	\$60,187	%69,052