

GLENVIEW DRIVE

305-311 GLENVIEW DR, LAWRENCE, KS 66049



HIGHLIGHTS

- » Two duplex properties (additional units available as well, not shown/included)
- » First duplex includes (2) 2-Bedroom units with attached 1-car garage, Second duplex includes (1) 2-Bedroom unit with attached 1-car garage & (1) 3-bedroom unit with attached 2-car garage
- » Washer/dryer hookup
- » Near high traffic intersection of Kasold & 6th
- » Easy access to shopping and dining

FOR SALE

\$423,900

DEMOGRAPHICS

	1 Mile	3 Mile	5 Mile
2016 POPULATION	9,205	56,087	94,370
2016 AVG HOUSEHOLD INCOME	\$88,575	\$72,081	\$67,266

Ryan Schulteis

Office: 913-945-3741
Mobile: 785-766-6712
Email: ryans@reececommercial.com

Matt Watkins

Office: 913-266-5424
Mobile: 913-908-9447
Email: matt@reececommercial.com

The information above has been obtained from sources believed reliable. While we do not doubt its accuracy we have not verified it and make no guarantee, warranty or representation about it. It is your responsibility to independently confirm its accuracy and completeness. Any projections, opinions, assumptions, or estimates used are for example only and do not represent the current or future performance of the property. You and your advisors should conduct a careful, independent investigation of the property to determine to your satisfaction the suitability of the property for your needs.

© 2016

PHOTOS

305-311 GLENVIEW DR, LAWRENCE, KS 66049



Ryan Schulteis

Office: 913-945-3741

Mobile: 785-766-6712

Email: ryans@reececommercial.com

Matt Watkins

Office: 913-266-5424

Mobile: 913-908-9447

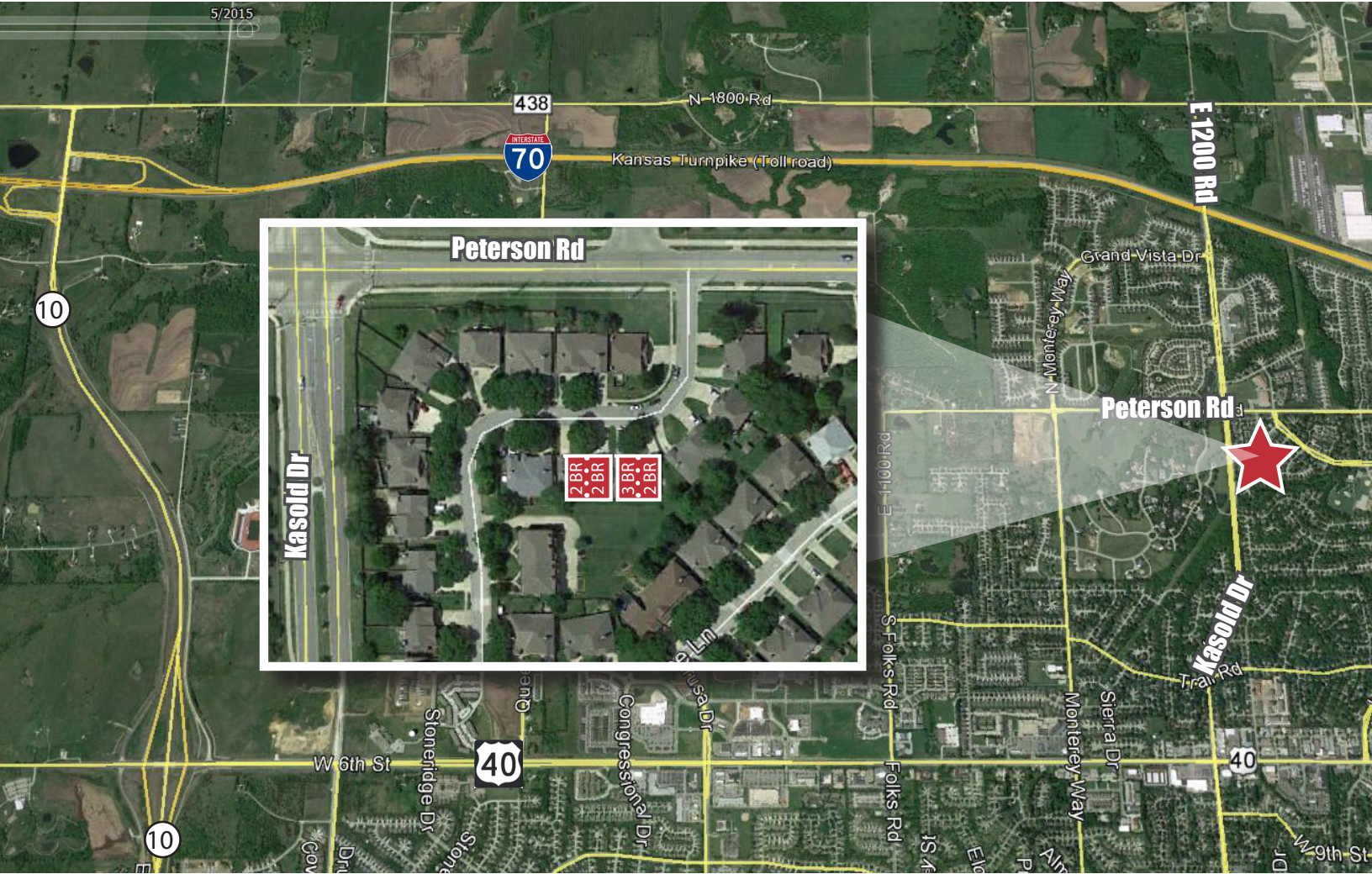
Email: matt@reececommercial.com

The information above has been obtained from sources believed reliable. While we do not doubt its accuracy we have not verified it and make no guarantee, warranty or representation about it. It is your responsibility to independently confirm its accuracy and completeness. Any projections, opinions, assumptions, or estimates used are for example only and do not represent the current or future performance of the property. You and your advisors should conduct a careful, independent investigation of the property to determine to your satisfaction the suitability of the property for your needs.

© 2016

AERIAL & PHOTOS

305-311 GLENVIEW DR, LAWRENCE, KS 66049



Ryan Schulteis

Office: 913-945-3741
Mobile: 785-766-6712
Email: ryans@reececommercial.com

Matt Watkins

Office: 913-266-5424
Mobile: 913-908-9447
Email: matt@reececommercial.com

The information above has been obtained from sources believed reliable. While we do not doubt its accuracy we have not verified it and make no guarantee, warranty or representation about it. It is your responsibility to independently confirm its accuracy and completeness. Any projections, opinions, assumptions, or estimates used are for example only and do not represent the current or future performance of the property. You and your advisors should conduct a careful, independent investigation of the property to determine to your satisfaction the suitability of the property for your needs.