

Prime Chelsea Corner Retail Space for Lease

245 SEVENTH AVENUE
NEW YORK, NY



NEWMARK

**CHELSEA
NEW YORK, NY**

Ground Floor | Proposed Divisions

245 Seventh Avenue

Location

Northeast corner of West 24th Street

Approximate Size

Ground Floor 5,713 SF*

*Divisible- flexible divisions

Cellar 3,773 SF*

*Can be leased separately with private entry

Term

Long term

Possession

Immediate

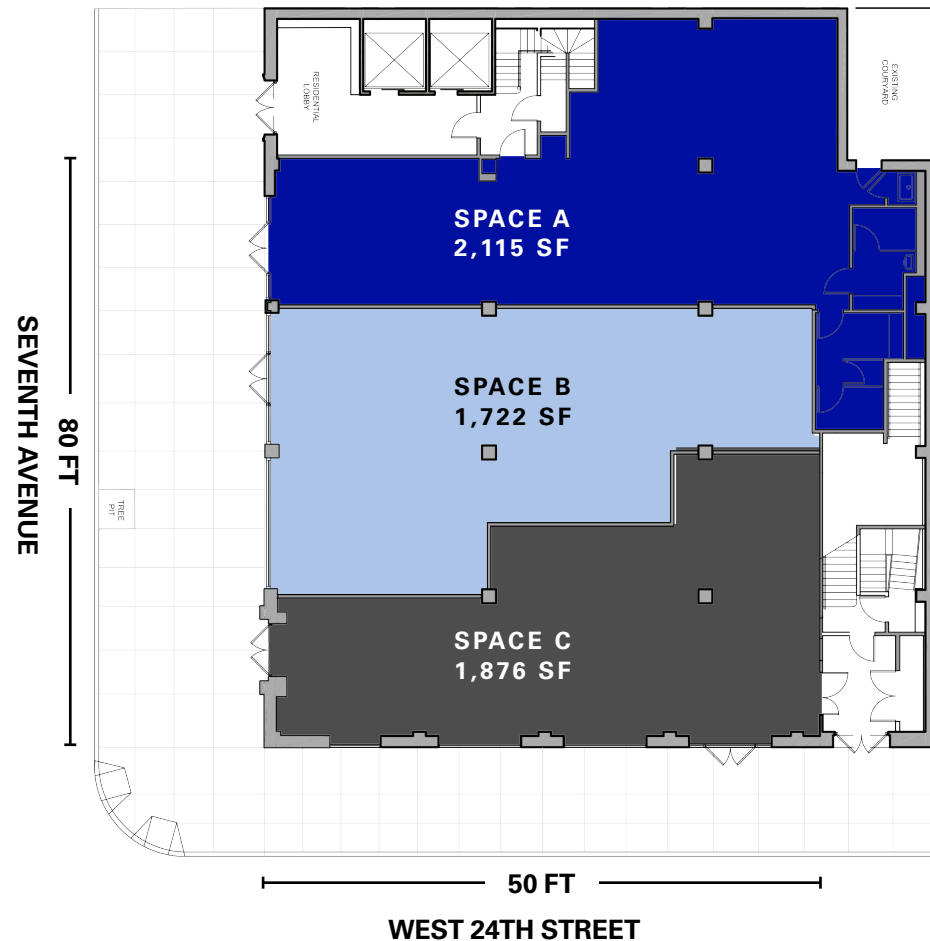
Neighbors

buybuy BABY, Bank of America, FedEx, TD Bank, Starbucks, Beach Bum Tanning, Westside Market, Cohens Optical, Chipotle Mexican Grill, Bare Burger, Just Salad, Taco Bell, Fashion Institute of Technology and the School of Visual Arts

Comments

Across from Whole Foods Market earning \$1 million weekly

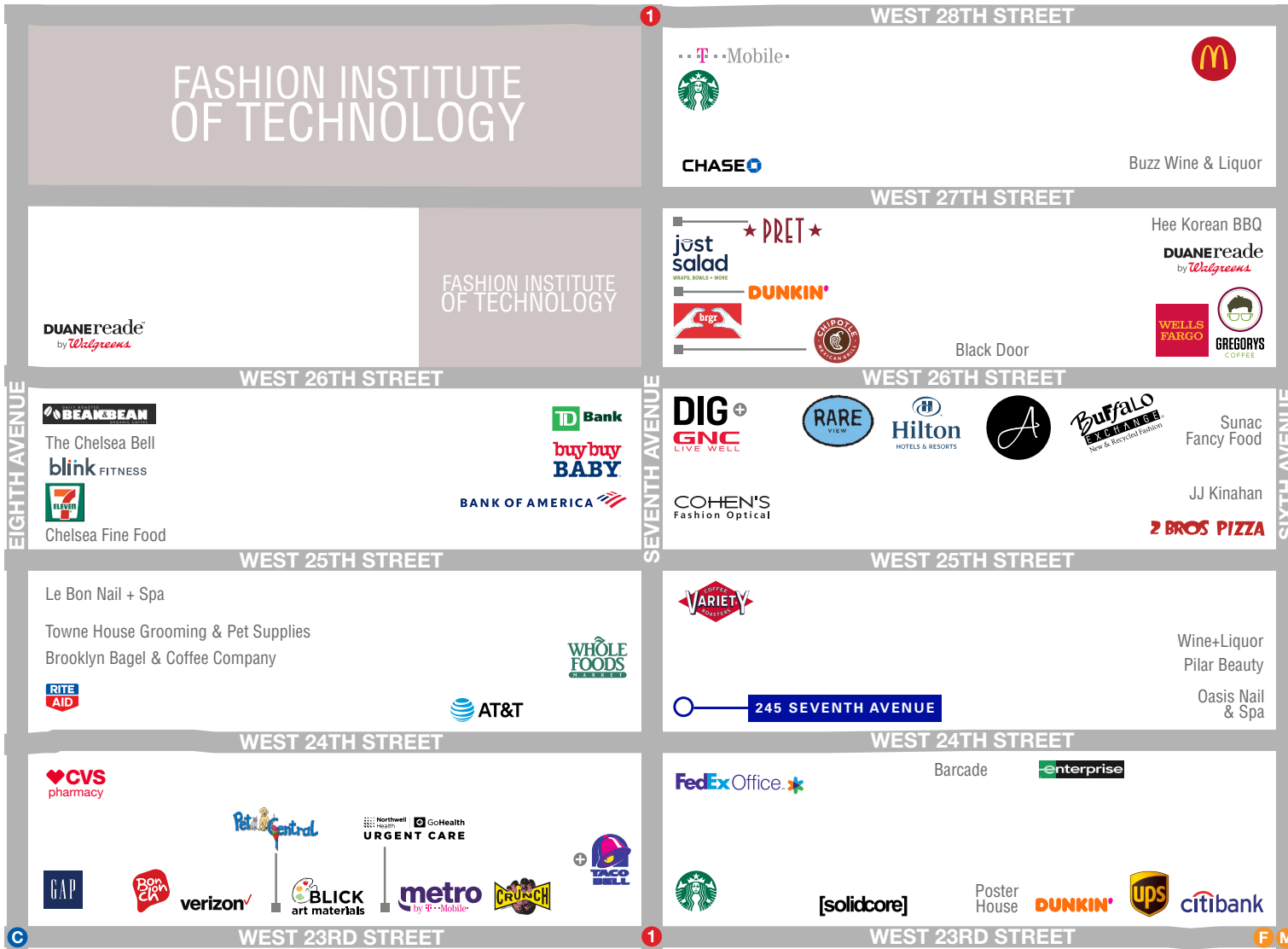
Close proximity to the **1** subway train at 23rd Street, the **PATH**, **F** and **M** subway trains at 23rd Street/Sixth Avenue and the **C** and **E** subway trains at 23rd Street/Eighth Avenue



AREA NEIGHBORS



AREA MAP



CONTACT

Jeffrey D Roseman
t 212-372-2430
jroseman@ngkf.com

Craig Slosberg
t 212-372-2398
craig.slosberg@ngkf.com

Jeremy Tucker
t 516-712-5383
jeremy.tucker@ngkf.com

nmrk.com

+ COMING SOON