



FOR LEASE

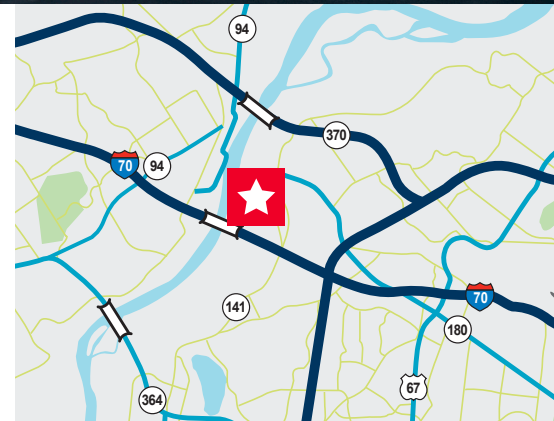
4329 Green Ash Drive
Earth City, MO 63045



23,936 SF Distribution Warehouse

Property Highlights

Total Building Area:	78,416 SF
Available Area:	23,936 SF
Office:	2,553 SF
Clear Height:	20'-24'
Column Spacing:	32'x34'
Building Depth:	205'
Building Type:	Precast Concrete/Tilt-Up (1981)
Loading:	3 (10'x10') Docks, 1 (10'x10') Drive-In
Power:	600 Amp, 120/208V, 3 Phase
Location:	Easy access to I-70, I-270 and Hwy 370 Seven miles to Lambert St. Louis Int'l Airport
Lease Rate:	\$3.85/SF NNN



Ed Lampitt, SIOR, CCIM

+1 314 746 0383
ed.lampitt@cushwake.com

Matt Eastin, CCIM

+1 314 746 0350
matt.eastin@cushwake.com

Christy Campbell

+1 314 813 9524
christy.campbell@cushwake.com

7700 Forsyth Blvd., Suite 1210
St. Louis, MO 63105
Main +1 314 862 7100
cushmanwakefield.com



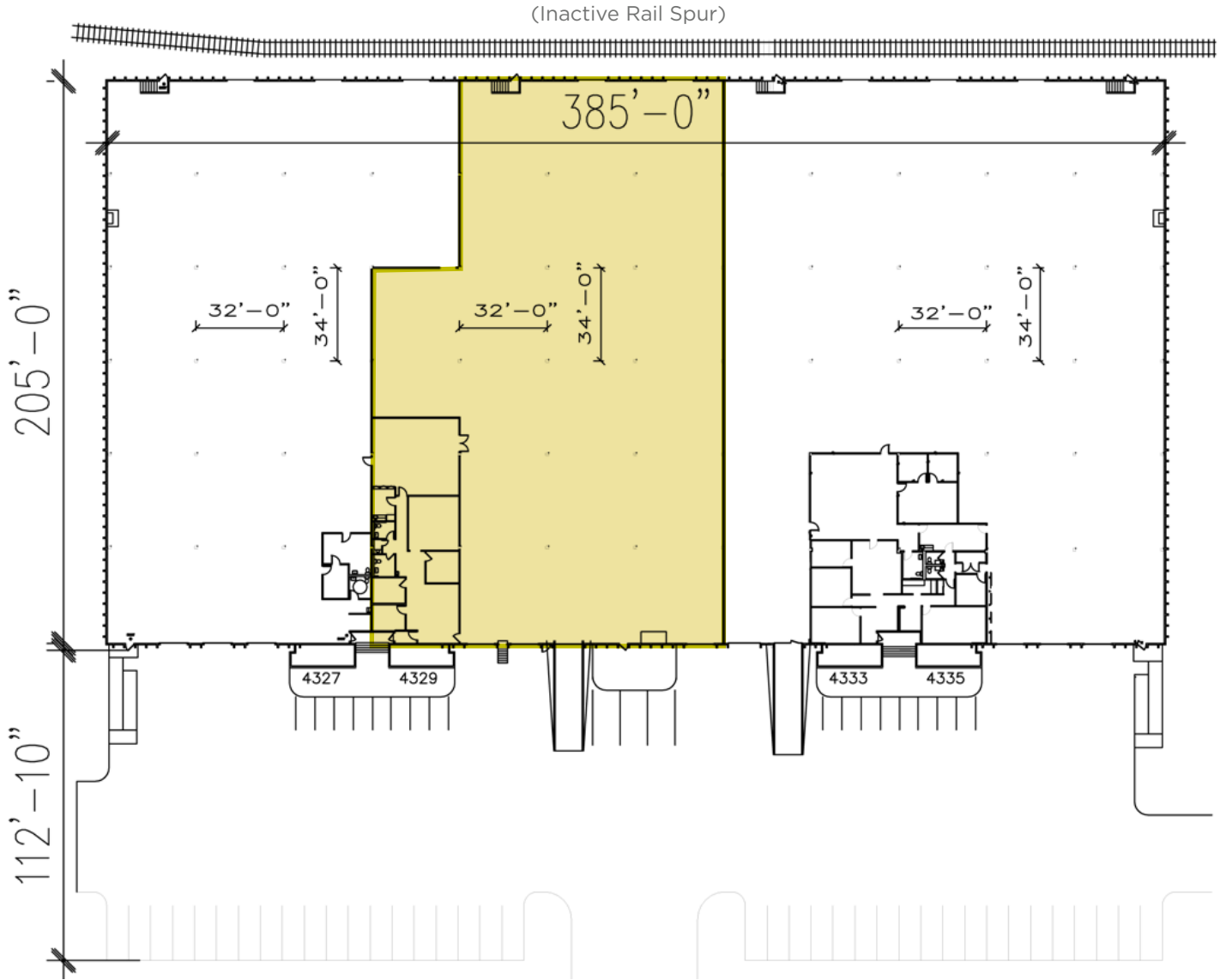
**CUSHMAN &
WAKEFIELD**

FOR LEASE

4329 Green Ash Drive

Earth City, MO 63045

Site Plan



Ed Lampitt, CCIM, SIOR
Managing Director
+1 314 746 0383
ed.lampitt@cushwake.com

Matt Eastin, CCIM
Director
+1 314 746 0350
matt.eastin@cushwake.com

Christy Campbell
Associate
+1 314 813 9524
christy.campbell@cushwake.com

7700 Forsyth Blvd., Suite 1210
St. Louis, MO 63105
Main +1 314 862 7100
cushmanwakefield.com