



**CUSHMAN &
WAKEFIELD**
Commerce

FOR LEASE

Office/Warehouse

2382 S Redwood Road / West Valley City, Utah



Lease Rate: \$.50 PSF, MG

Property Highlights

- Size: 12,000 SF
Office: 1,450 SF
- Doors: (3) 12' x 14' GL
- Power: 600 A, 208 V, 3Phase
- Ceiling Height: 16' clear
- Zoning: M-1A

Property Highlights

- Fire sprinkled
- Great freeway access
- Recently remodeled



Bob Mills

Executive Director / Industrial Specialist
+1 801 303 5551
bmills@comre.com

170 South Main Street, Suite 1600
Salt Lake City, UT 84101
Main +1 801 322 2000
Fax +1 801 322 2040
comre.com

Independently Owned and Operated / A Member of the Cushman & Wakefield Alliance

Cushman & Wakefield Copyright 2016. No warranty or representation, express or implied, is made to the accuracy or completeness of the information contained herein, and same is submitted subject to errors, omissions, change of price, rental or other conditions, withdrawal without notice, and to any special listing conditions imposed by the property owner(s). As applicable, we make no representation as to the condition of the property (or properties) in question. (path: G:\1 - Projects\Mills, B\1 - Flyers\2382sRedwoodRoad)



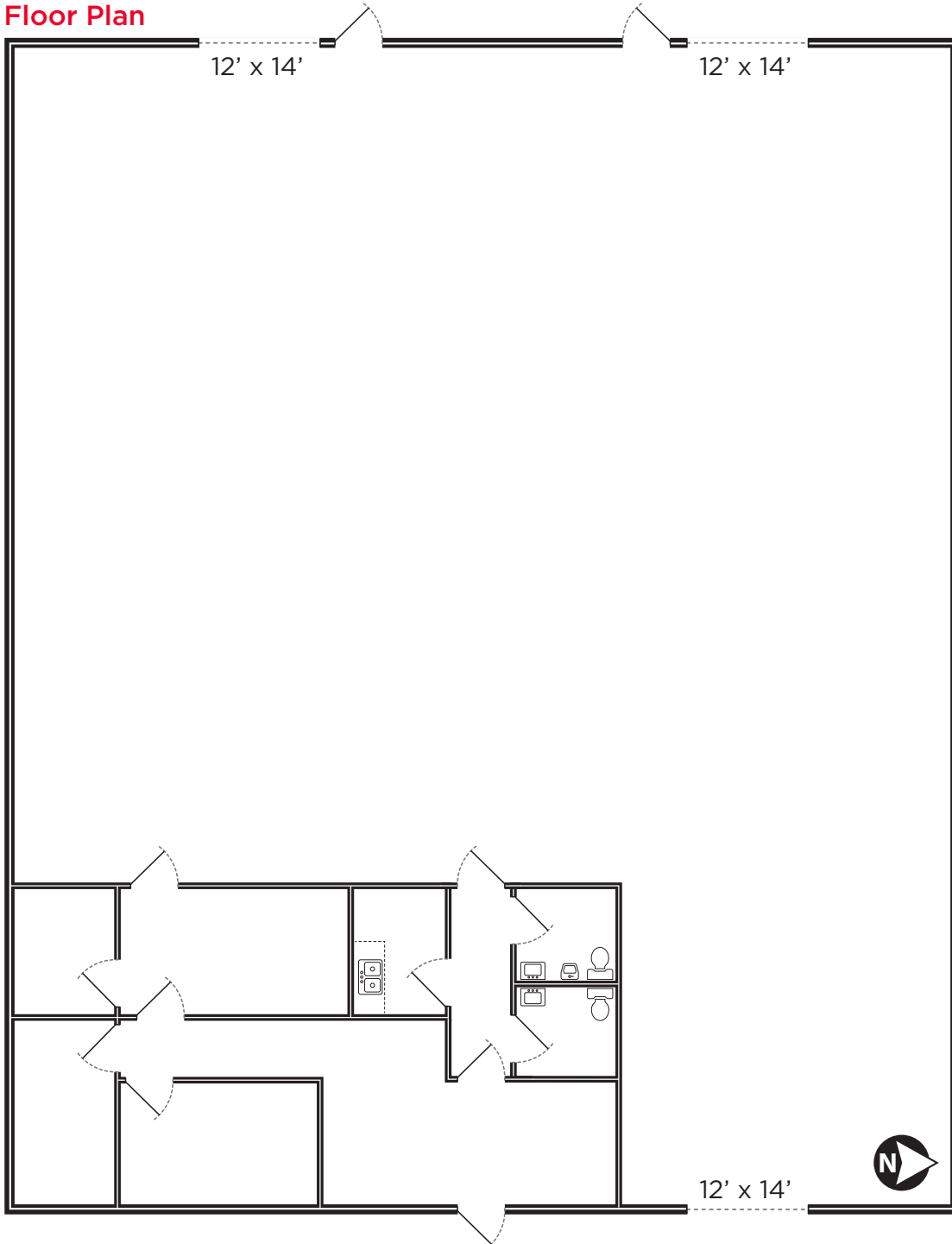
**CUSHMAN &
WAKEFIELD**
Commerce

FOR LEASE

Office/Warehouse

2382 S Redwood Road / West Valley City, Utah

Floor Plan



Bob Mills

Executive Director / Industrial Specialist
+1 801 303 5551
bmills@comre.com

170 South Main Street, Suite 1600
Salt Lake City, UT 84101
Main +1 801 322 2000
Fax +1 801 322 2040
comre.com

Independently Owned and Operated / A Member of the Cushman & Wakefield Alliance

Cushman & Wakefield Copyright 2016. No warranty or representation, express or implied, is made to the accuracy or completeness of the information contained herein, and same is submitted subject to errors, omissions, change of price, rental or other conditions, withdrawal without notice, and to any special listing conditions imposed by the property owner(s). As applicable, we make no representation as to the condition of the property (or properties) in question. (path: G:\1 - Projects\Mills, B\1 - Flyers\2382sRedwoodRoad)