

Indian Head Industrial

1561-1573 N. Warson Road | 10715-10727 Indian Head Industrial Blvd
St. Louis, MO 63132

**2,712 & 3,520 SF OFFICE / WAREHOUSE
AVAILABLE FOR LEASE**



- **3,520 SF Endcap Available**
- 1573 N. Warson Road
- Space includes private offices and 2 restrooms
- Overhead door to loading platform

- **2,712 SF Available**
- 10725 Indian Head Industrial Blvd
- 50% office includes private offices and 2 restrooms
- 10'x12' grade level drive-in door

- Located on the corner of Indian Head Industrial Blvd and N. Warson Road just south of Page Ave
- Convenient access to Page Ave, Lindbergh Blvd and I-170
- Ample parking available
- **LEASE RATE: \$5.50 PSF NNN**

HUTKIN DEVELOPMENT COMPANY

10829 Olive Boulevard
Suite 200
St. Louis, MO 63141

Telephone 314.872.9140
FAX 314.872.9001

Visit our website:
www.hutkin.com

CONTACT

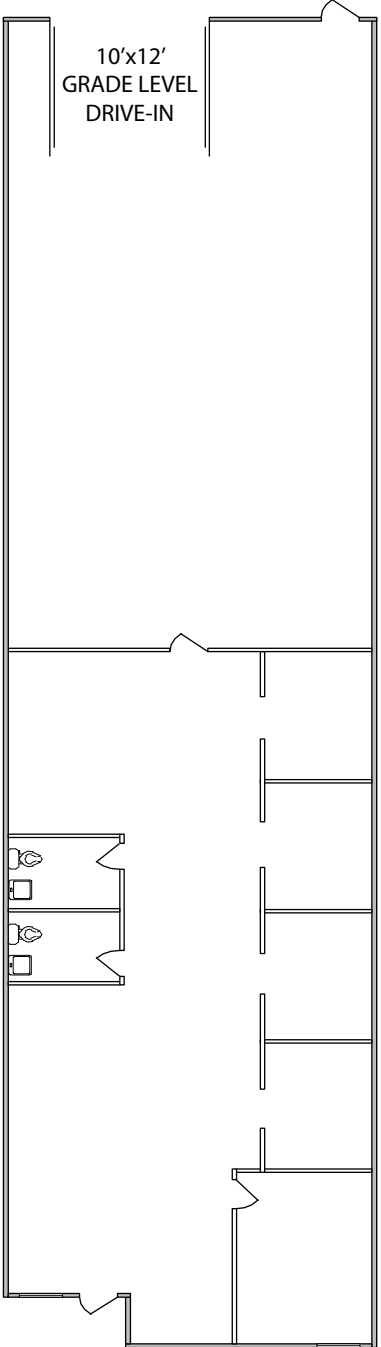
Tony Giarratano
tony@hutkin.com
Cell 314.276.2352

Bo Keefer
bkeefer@hutkin.com
Cell 314.973.1242

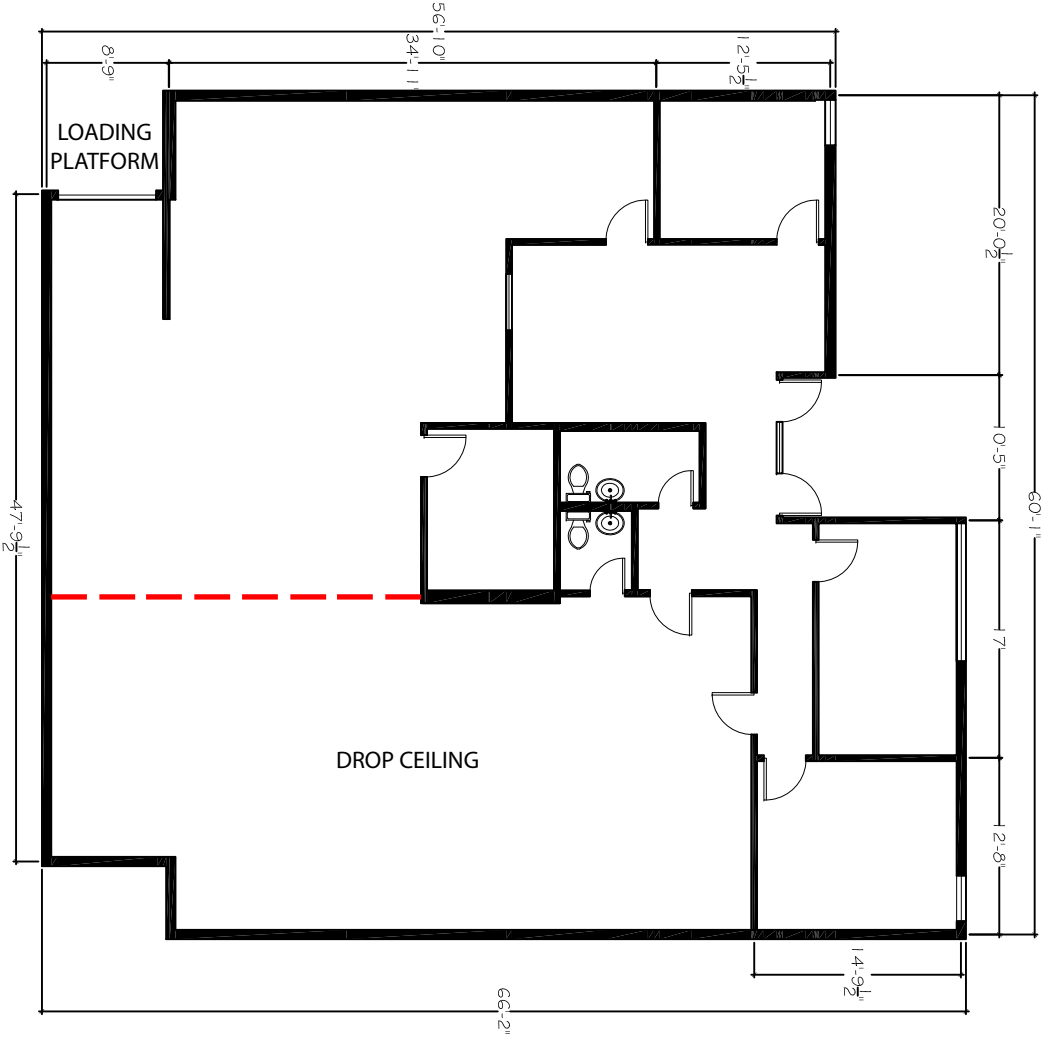
Indian Head Industrial

1561-1573 N. Warson Road | 10715-10727 Indian Head Industrial Blvd
St. Louis, MO 63132

**2,712 & 3,520 SF OFFICE / WAREHOUSE
AVAILABLE FOR LEASE**



10725 INDIAN HEAD INDUSTRIAL BLVD
2,712 SF



1573 N. WARSON ROAD
3,520 SF

Indian Head Industrial

1561-1573 N. Warson Road | 10715-10727 Indian Head Industrial Blvd
St. Louis, MO 63132

**2,712 & 3,520 SF OFFICE / WAREHOUSE
AVAILABLE FOR LEASE**

