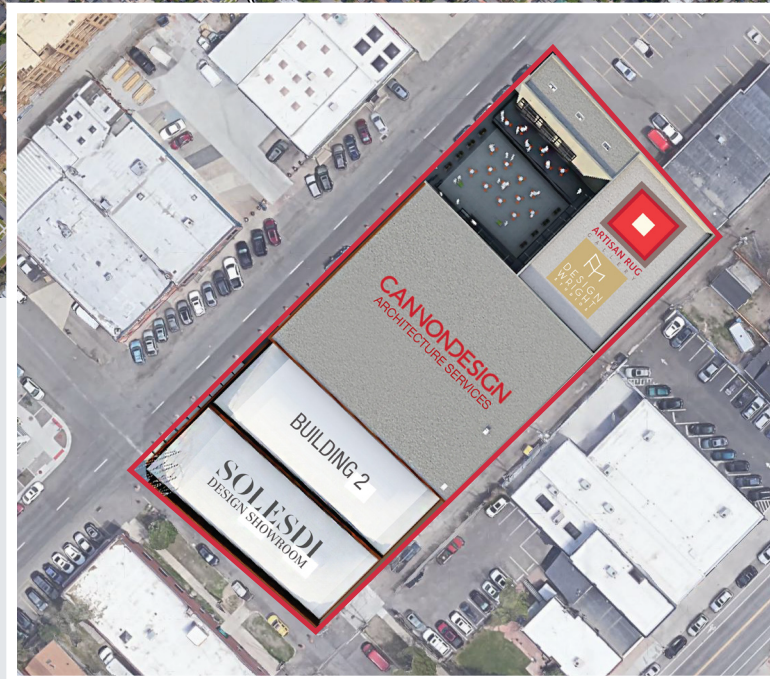


For Lease
2800 Walnut Street
 Denver, Colorado



For more information:

Todd Snyder
 720 881 7533
 tsnyder@shamesmakovsky.com

Trent Rice
 303 565 3033
 trice@shamesmakovsky.com

Connor Donahue
 720 881 7539
 cdonahue@shamesmakovsky.com



1400 Glenarm Place, Suite 100
 Denver, CO 80202
 303 534 5005
 naishamesmakovsky.com



For Lease
Renovated Bow & Truss
Office Building in RiNo



2800 Walnut Street

Denver, Colorado 80205

Property Overview

- Newly renovated bow & truss office building located in the heart of RiNo
- Building features an outdoor plaza, exposed ceilings with skylights, up to 25' high ceilings, and large open layouts
- Surrounded by many of Denver's best restaurants, coffee shops, galleries, and entertainment venues
- Ranked Very Walkable with a Walk Score of 86 and a Biker's Paradise with a Bike Score of 95
- Abundant structured and surface parking available just two blocks away at 27th & Blake Street

Lease Rate: \$23.60/SF NNN

NO WARRANTY OR REPRESENTATION, EXPRESS OR IMPLIED, IS MADE AS TO THE ACCURACY OF THE INFORMATION CONTAINED HEREIN, AND THE SAME IS SUBMITTED SUBJECT TO ERRORS, OMISSIONS, CHANGE OF PRICE, RENTAL OR OTHER CONDITIONS, PRIOR SALE, LEASE OR FINANCING, OR WITHDRAWAL WITHOUT NOTICE, AND OF ANY SPECIAL LISTING CONDITIONS IMPOSED BY OUR PRINCIPALS NO WARRANTIES OR REPRESENTATIONS ARE MADE AS TO THE CONDITION OF THE PROPERTY OR ANY HAZARDS CONTAINED THEREIN ARE ANY TO BE IMPLIED.

Property Facts

Available SF:	10,413 SF
Building SF:	49,417 SF
Year Built / Renov.:	1952 / 2017

For more information:

Todd Snyder
 720 881 7533
 tsnyder@shamesmakovsky.com

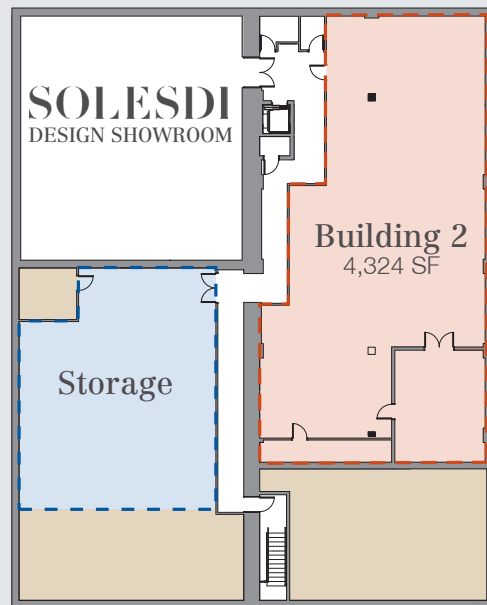
Trent Rice
 303 565 3033
 trice@shamesmakovsky.com

Connor Donahue
 720 881 7539
 cdonahue@shamesmakovsky.com

1400 Glenarm Place, Suite 100
 Denver, CO 80202
 303 534 5005
 naishamesmakovsky.com

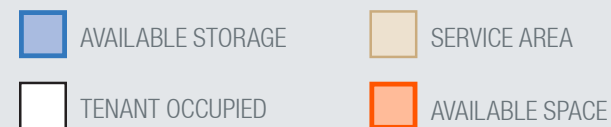
For Lease
2800 Walnut Street
Denver, Colorado

Lower Level



Availability

- Building 2 - Main & Lower Levels - 10,413 SF
- Storage - Lower Level - ±1,000 SF



Main Level

