

550 EAST WASHINGTON

HIGHLIGHTS



3-story, 49,998 s.f. building for lease in the ultra chic Market East Neighborhood



Gorgeous window lines



Within 1 mile of: Monument Circle, Bankers Life Fieldhouse, Circle Centre Mall, Indiana Convention Center, Victory Field, Mass Ave, Lucas Oil Stadium, the Cultural Trail, Transit Center, City Market, Indy Bike Hub, YMCA



Excellent access to I-65 & I-70



Adjacent to new multifamily/retail project by Milhaus, GRID



50 dedicated on-site parking spaces with up to 100 additional spaces within a 3-block radius

NOW LEASING



For more information:

ADAM BRODERICK

+1 317 810 7178

adam.broderick@am.jll.com

ABBY ZITO

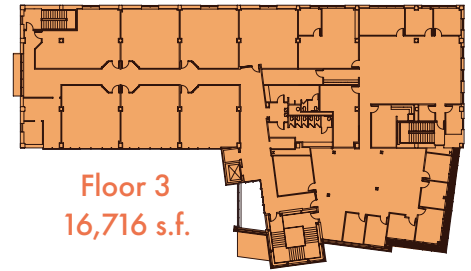
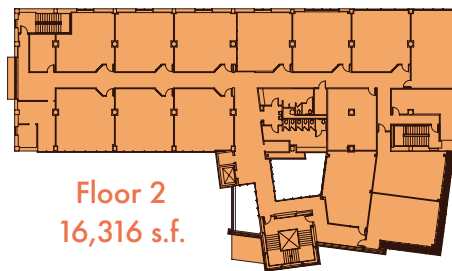
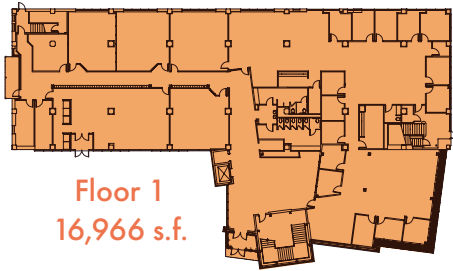
+1 317 810 7173

abby.zito@am.jll.com



NOW LEASING

FLOOR PLANS



AREA AMENITIES

