

FOR LEASE

# LAKESIDE BUSINESS PARK

2203

LAKESIDE BOULEVARD

Edgewood, MD 21040

EXPANDABLE



## AVAILABLE SPACE FEATURES

- + 99,100± SF Available
- + Expandable to 200,000± SF
- + 2,000± SF Office
- + 15 Loading Docks with Levelers
- + 1 Drive-in Door
- + 27'10" Clear Ceiling
- + 42'w X 42'd Column Spacing
- + ESFR
- + 82 Car Parks, 35 Trailer Drops
- + Zoned LI (Light Industrial)
- + Enterprise Zone Tax Incentives



## CONTACT US

### JON CASELLA

First Vice President  
+1 410 244 3127  
jon.casella@cbre.com

### JUSTIN MOHLER

First Vice President  
+1 410 244 3116  
justin.mohler@cbre.com

### LUKE WILSON

Vice President  
+1 410 244 3126  
luke.wilson@cbre.com



### CBRE, INC.

100 E Pratt St, Suite 1700  
Baltimore, MD 21202  
+1 410 244 7100

[www.cbre.com/baltimore](http://www.cbre.com/baltimore)

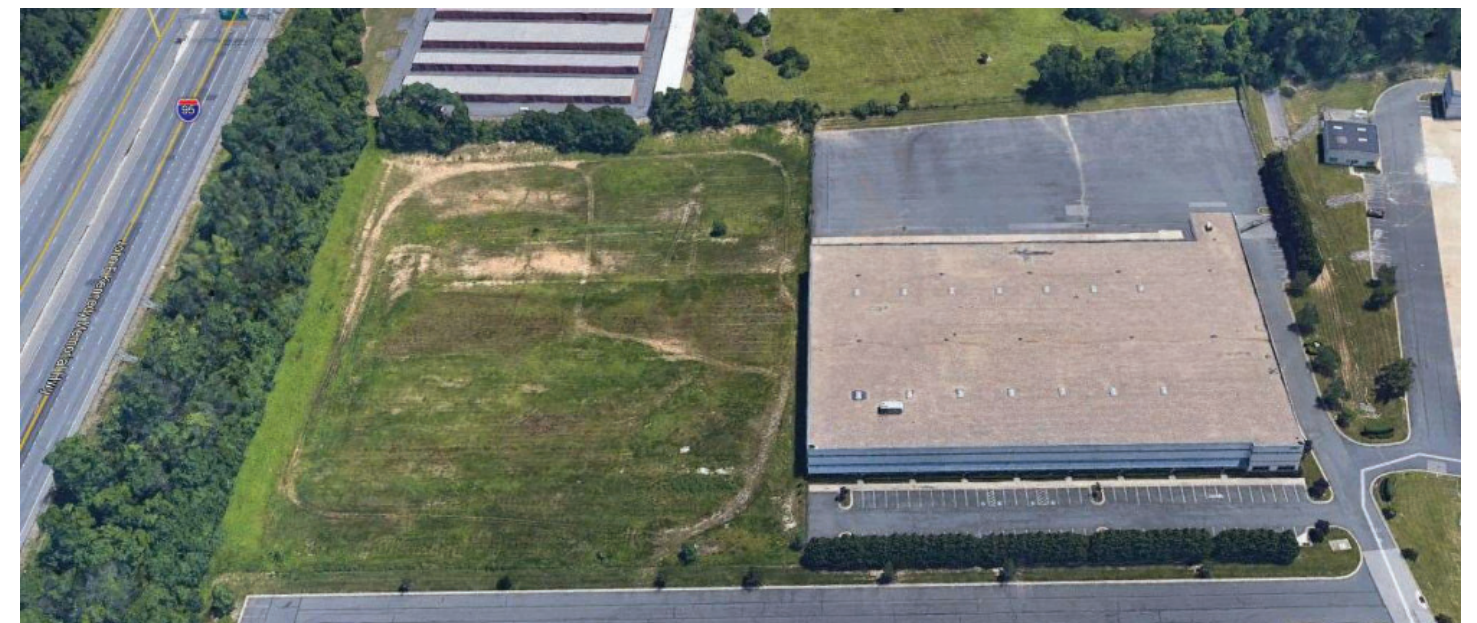
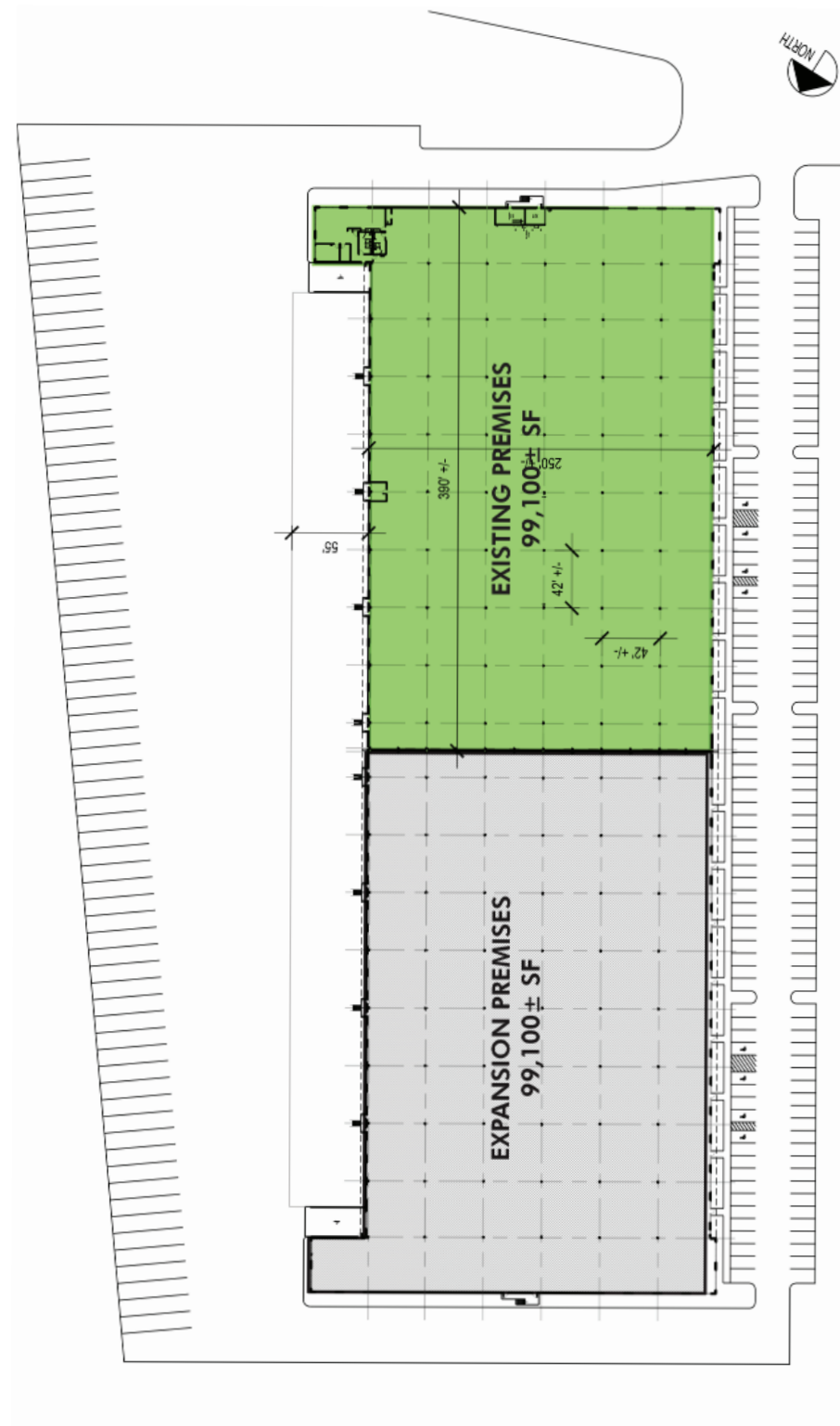
**CBRE**



FOR LEASE  
**2203 LAKESIDE BOULEVARD**

EDGEWOOD, MD 21040

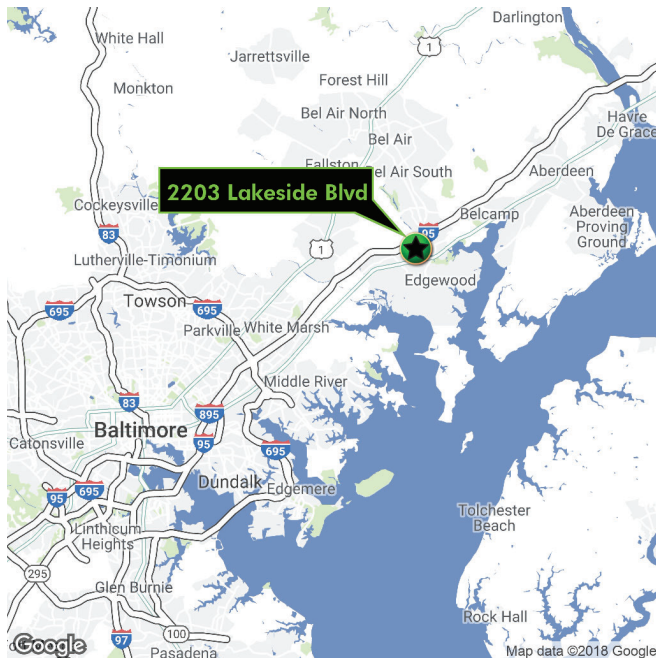
 **SITE PLAN**





# FOR LEASE 2203 LAKESIDE BOULEVARD

Edgewood, MD 21040



## TRAVEL DISTANCES

US Route 40 .....	1.7 miles
I-95 .....	2 miles
US Route 1 .....	7 miles
I-695 .....	14 miles
I-895 .....	16.6 miles
Port of Baltimore.....	22.8 miles
BWI Airport.....	31.9 miles

© 2019 CBRE, Inc. All rights reserved. This information has been obtained from sources believed reliable, but has not been verified for accuracy or completeness. You should conduct a careful, independent investigation of the property and verify all information. Any reliance on this information is solely at your own risk. CBRE and the CBRE logo are service marks of CBRE, Inc. All other marks displayed on this document are the property of their respective owners.

Photos herein are the property of their respective owners and use of these images without the express written consent of the owner is prohibited.

[www.cbre.com/baltimore](http://www.cbre.com/baltimore)

**CBRE**