

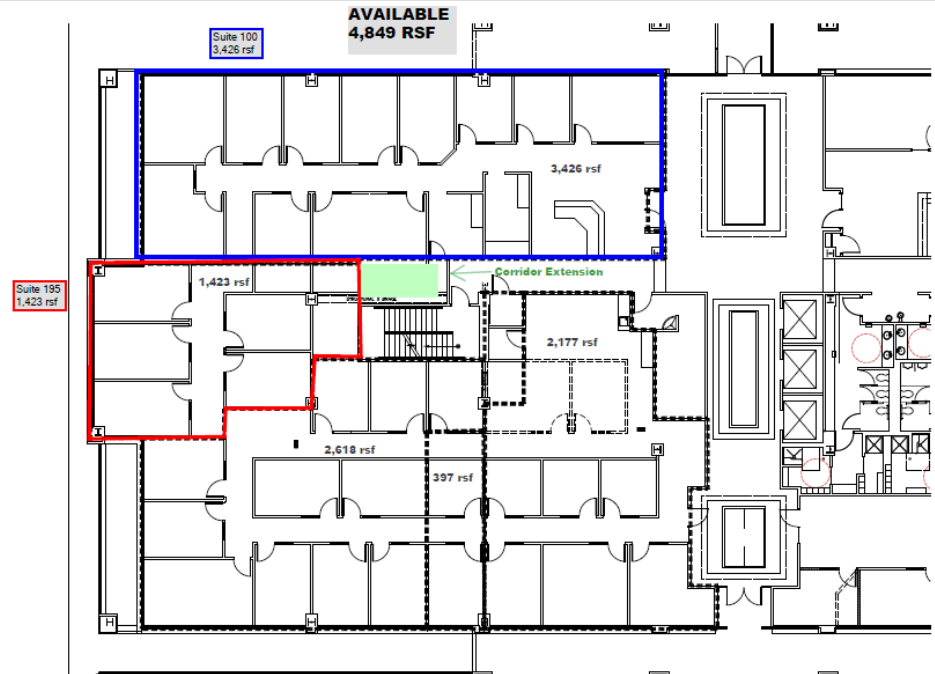
\$32.00/RSF

- Most prestigious address in the East Portland Market!
- Premier space
- Divisible to 3,426 RSF and 1,423 RSF
- Many restaurant & shopping options nearby
- Secure on-site storage spaces available
- Underground parking w/ EV charging station
- Easy access to I-205
- Experienced management
- NO deferred maintenance
- 5% lease commission to brokers
- Locker rooms with showers on 1st floor

**Office Space
For Lease**

Sunnybrook Corporate Center

9200 SE Sunnybrook Blvd, Clackamas, OR
Suite 100-195 - 4,849 RSF



Tour This Property Now – Text “SCC” to 24587

For more information, contact:
Quest Property Management
Office: 503-222-5402

Kevin Johnson 503-816-5402
Kevin@questpropertymanagement.com

Rachel Phelps 503-349-2799
Rachel@questpropertymanagement.com



Contact us to schedule a
tour!

AVAILABLE
4,849 RSF

Suite 100
3,426 rsf

Suite 195
1,423 rsf

