

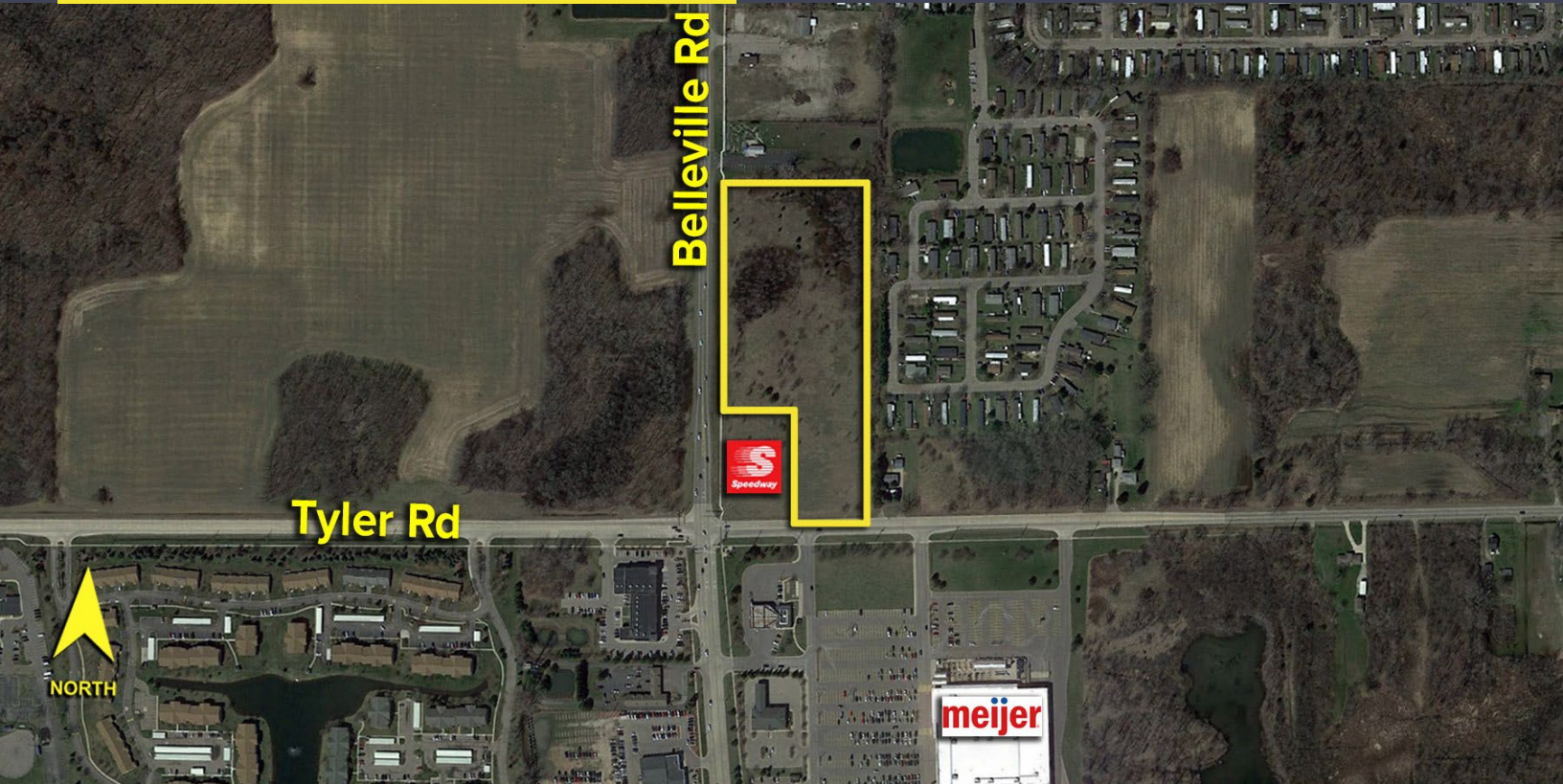
BELLEVILLE ROAD
VAN BUREN TWP., MICHIGAN

LAND FOR SALE
9.92 Acres Available



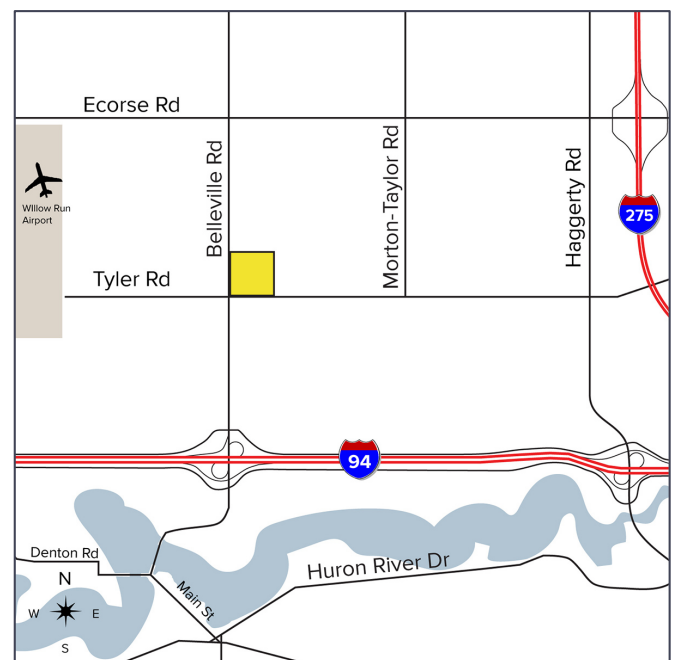
**SIGNATURE
ASSOCIATES**
KNOW SIGNATURE | KNOW RESULTS

JOIN SPEEDWAY!



PROPERTY FEATURES

- 9.92 acres available
- Zoned C-I; general business
- All utilities available on site
- Great commercial site across from Meijer
- Parcels are ready for development
- Sale Price: \$1,944,518 (\$196,019.96/acre)



For more information, please contact:

STEVE GORDON

(248) 948 0101

sgordon@signatureassociates.com

JUSTIN GAFFREY

(248) 799 3143

jgaffrey@signatureassociates.com

SIGNATURE ASSOCIATES

One Towne Square, Suite 1200

Southfield, MI 48076

www.signatureassociates.com

Belleville – Van Buren Twp., Michigan

9.92 Acres For Sale

9.92
Acres
AVAILABLE

Aerial



For more information, please contact:

STEVE GORDON

(248) 948 0101

sgordon@signatureassociates.com

JUSTIN GAFFREY

(248) 799 3143

jgaffrey@signatureassociates.com

SIGNATURE ASSOCIATES

One Towne Square, Suite 1200

Southfield, MI 48076

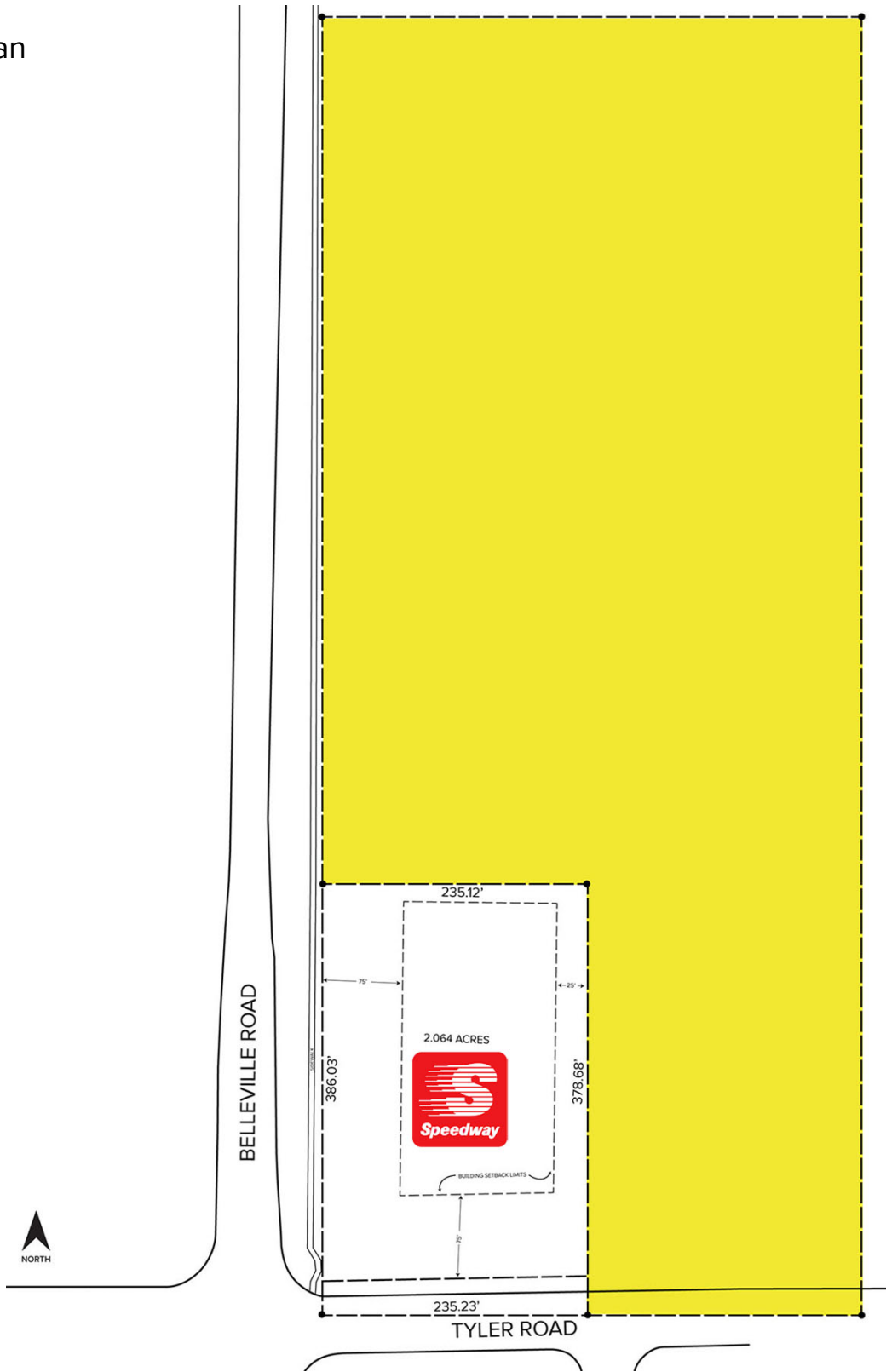
www.signatureassociates.com

Belleville – Van Buren Twp., Michigan

9.92 Acres For Sale

9.92
Acres
AVAILABLE

Site Plan



For more information, please contact:

STEVE GORDON

(248) 948 0101

sgordon@signatureassociates.com

JUSTIN GAFFREY

(248) 799 3143

jgaffrey@signatureassociates.com

SIGNATURE ASSOCIATES

One Towne Square, Suite 1200

Southfield, MI 48076

www.signatureassociates.com