



Property Highlights

- LEED® Gold Certified class A office building
- Covered parking available
- Prominent building and monument signage opportunities
- Finished ceiling height of 11 feet at the ground floor and 10 feet at the second and third floors
- Open and column-free office space allowing unparalleled efficiency and flexibility



Greg Martin, Principal
D 954 903 3900
greg.martin@avisonyoung.com

Justin Cope, Principal
D 954 903 3701
justin.cope@avisonyoung.com

Lisa Blumer, Senior Associate
D 954 903 3703
lisa.blumer@avisonyoung.com

500 W Cypress Creek Road
Suite 550
Fort Lauderdale, FL 33309

Availability



Rental Rate: \$32.00 NNN
Operating Expenses: \$13.86

1825 Building

Suite 120: 5,572 sf*
** First generation*



Rental Rate: \$32.00 NNN
Operating Expenses: \$13.55

1875 Building

Suite 110: 5,559 SF

Suite 120: 3,766 SF

Suite 205: 1,194 SF

Suite 210: 4,290 SF *
** First generation*

Suite 350: 9,917 SF

Greg Martin, Principal
D 954 903 3900
greg.martin@avisonyoung.com

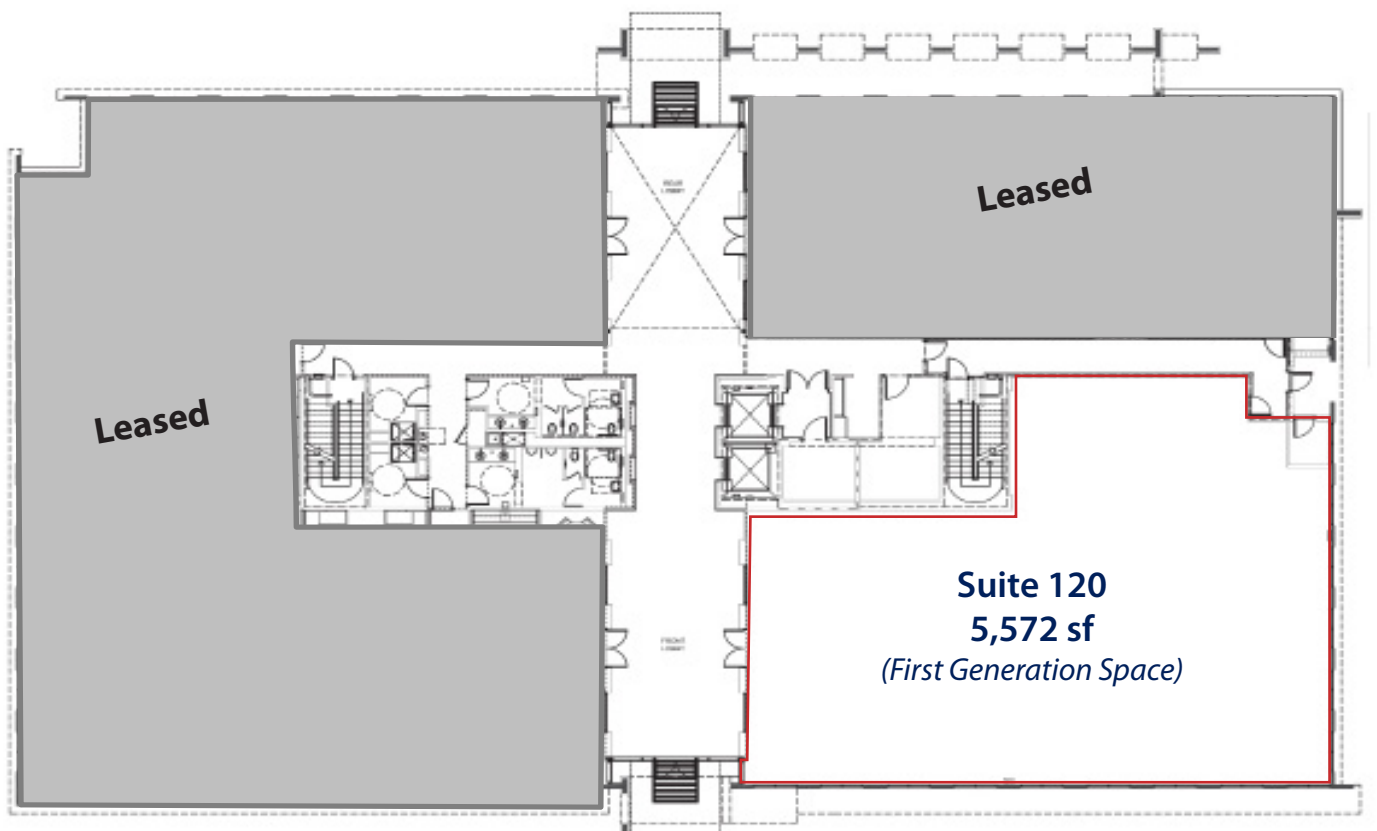
Justin Cope, Principal
D 954 903 3701
justin.cope@avisonyoung.com

Lisa Blumer, Senior Associate
D 954 903 3703
lisa.blumer@avisonyoung.com

500 W Cypress Creek Road
Suite 550
Fort Lauderdale, FL 33309

1825 Building

Suite 120 - 5,572 sf



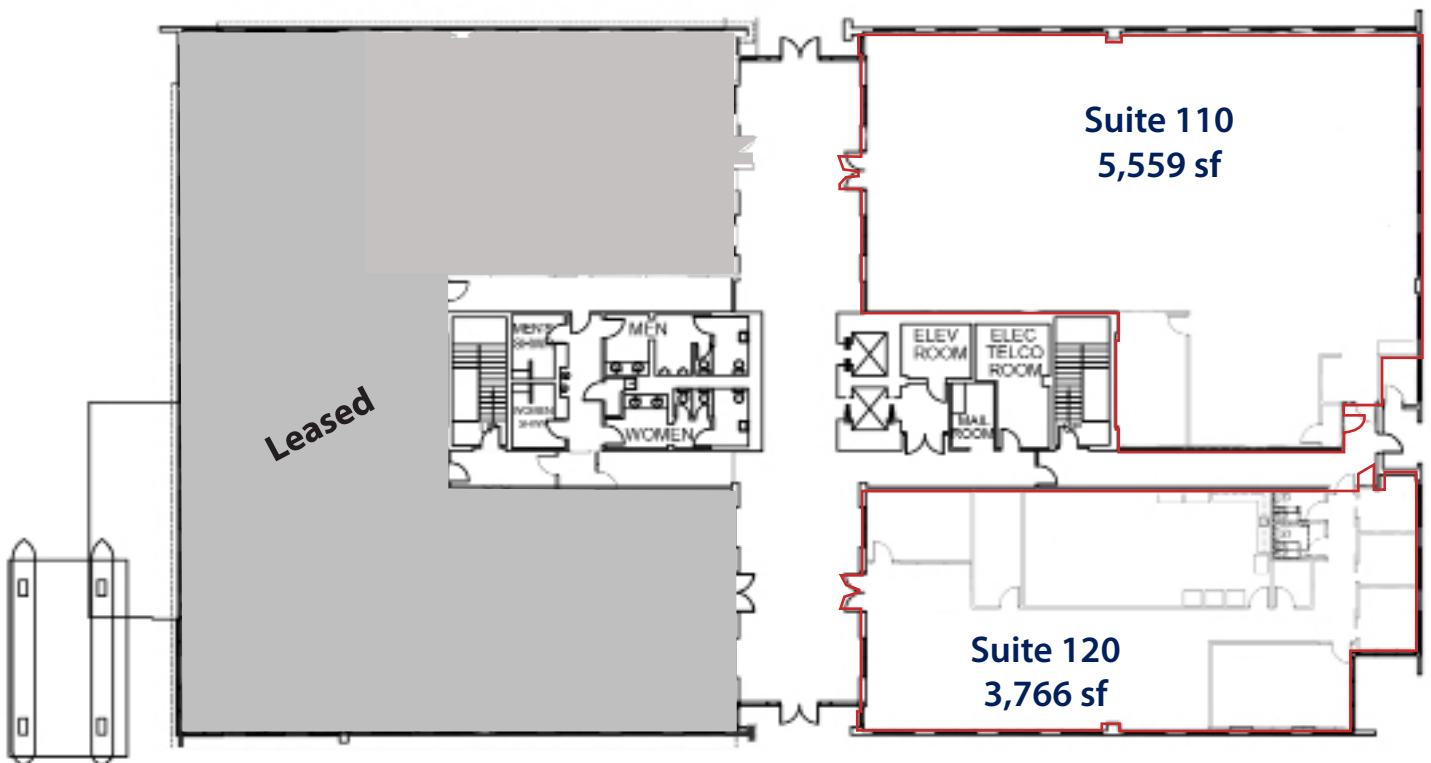
Greg Martin, Principal
D 954 903 3900
greg.martin@avisonyoung.com

Justin Cope, Principal
D 954 903 3701
justin.cope@avisonyoung.com

Lisa Blumer, Senior Associate
D 954 903 3703
lisa.blumer@avisonyoung.com

500 W Cypress Creek Road
Suite 550
Fort Lauderdale, FL 33309

1875 Building
Ground Floor



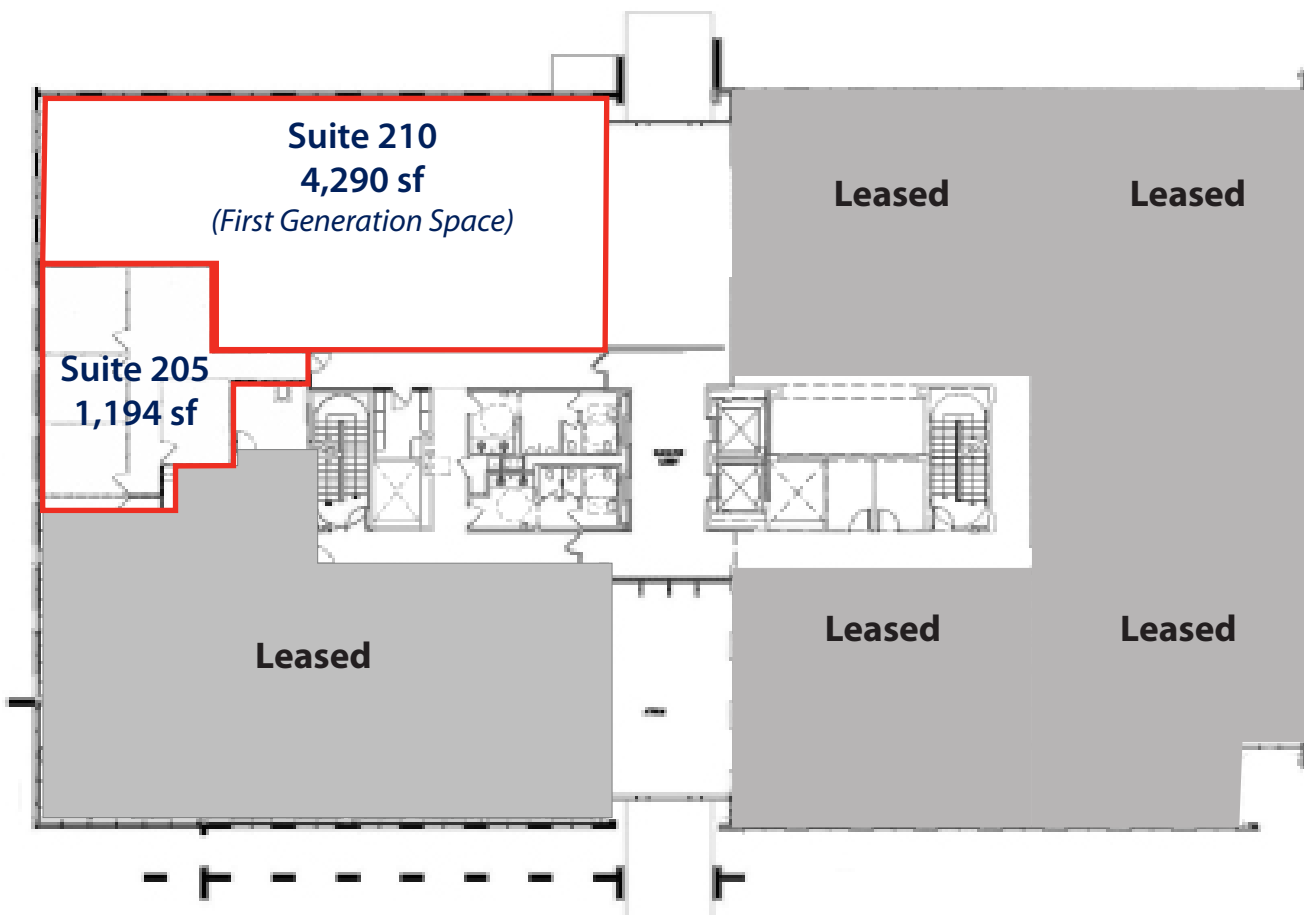
Greg Martin, Principal
D 954 903 3900
greg.martin@avisonyoung.com

Justin Cope, Principal
D 954 903 3701
justin.cope@avisonyoung.com

Lisa Blumer, Senior Associate
D 954 903 3703
lisa.blumer@avisonyoung.com

500 W Cypress Creek Road
Suite 550
Fort Lauderdale, FL 33309

1875 Building
Second Floor



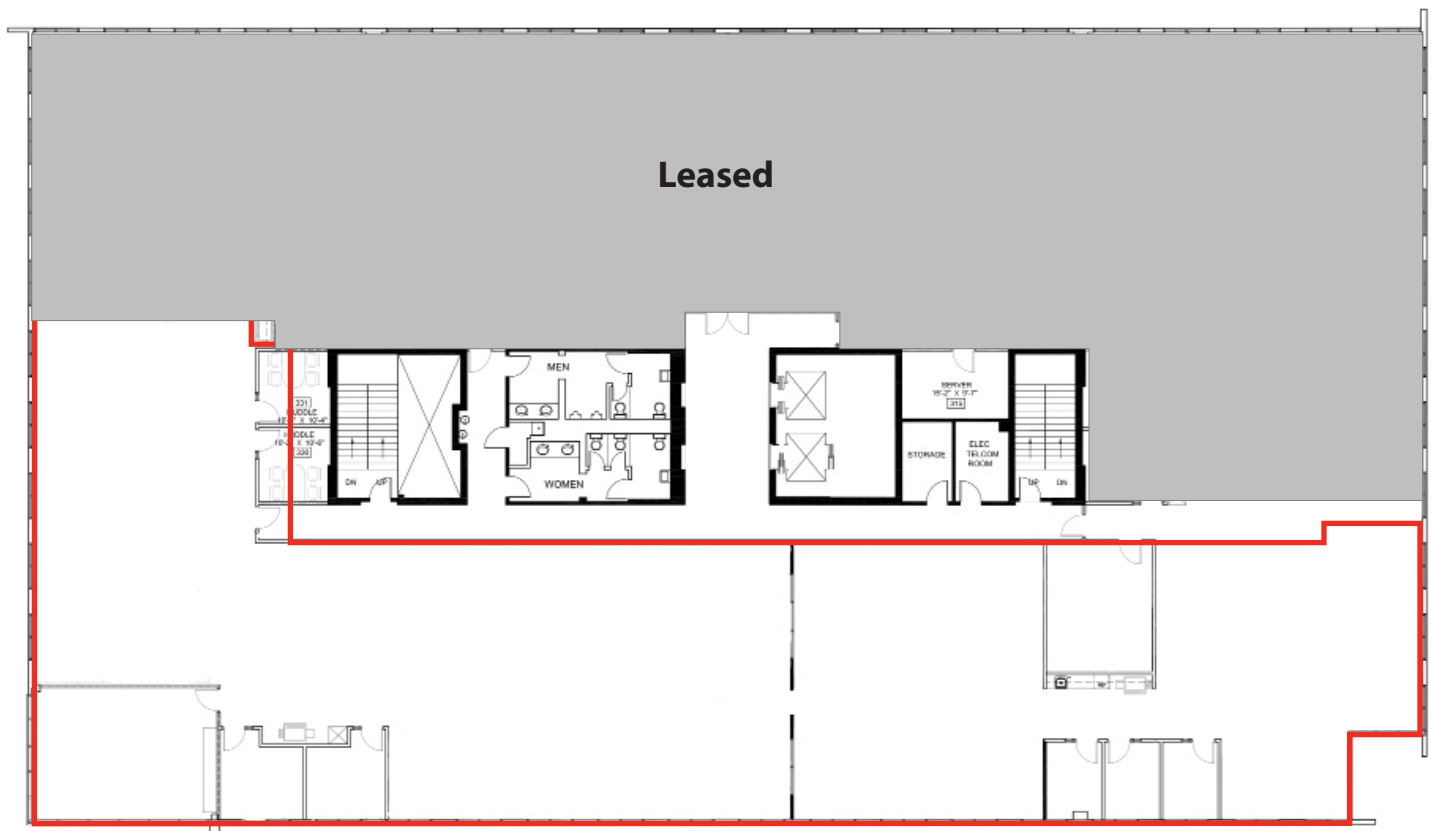
Greg Martin, Principal
D 954 903 3900
greg.martin@avisonyoung.com

Justin Cope, Principal
D 954 903 3701
justin.cope@avisonyoung.com

Lisa Blumer, Senior Associate
D 954 903 3703
lisa.blumer@avisonyoung.com

500 W Cypress Creek Road
Suite 550
Fort Lauderdale, FL 33309

1875 Building
Suite 350 - 9,917 sf



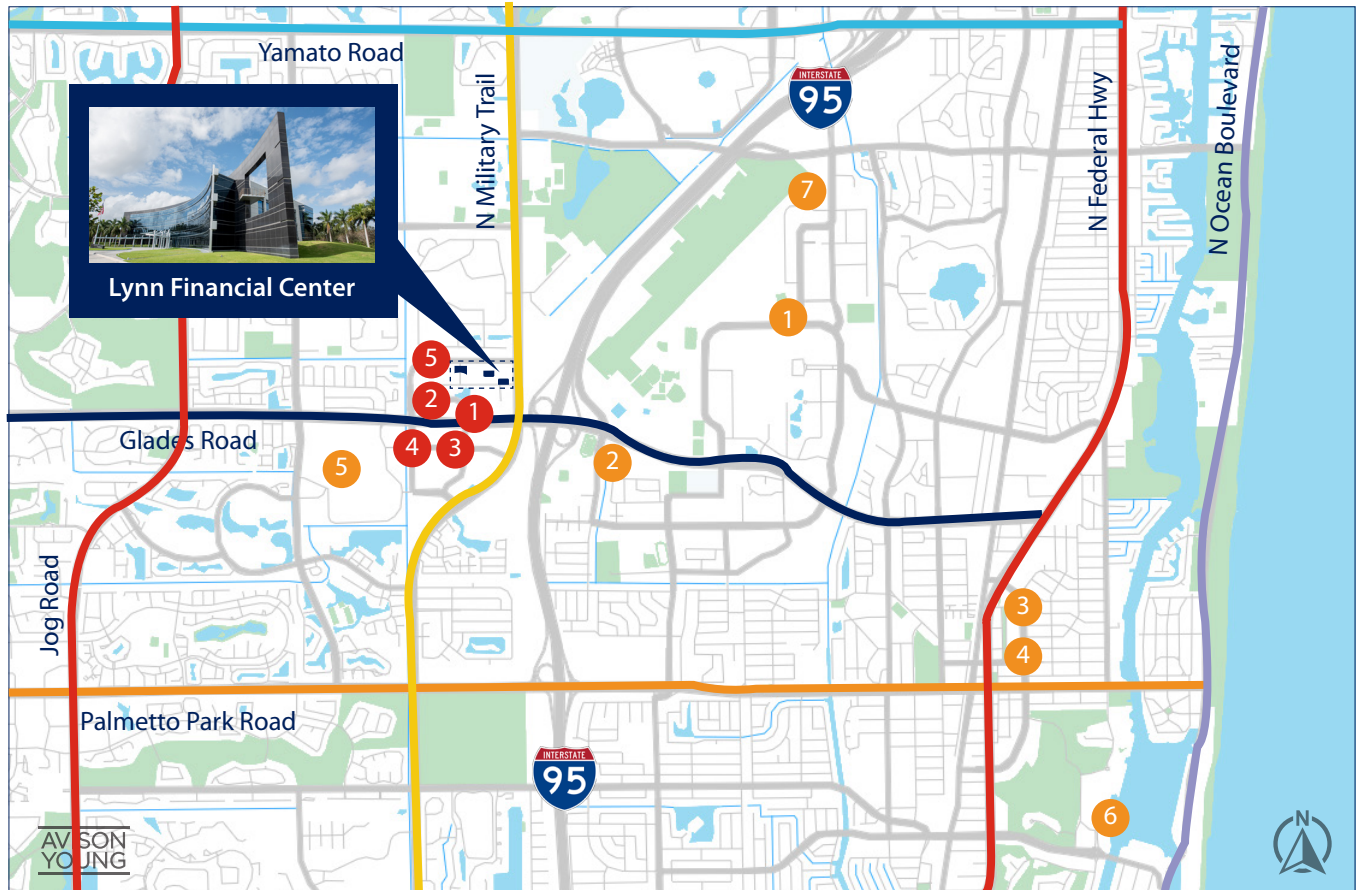
Greg Martin, Principal
D 954 903 3900
greg.martin@avisonyoung.com

Justin Cope, Principal
D 954 903 3701
justin.cope@avisonyoung.com

Lisa Blumer, Senior Associate
D 954 903 3703
lisa.blumer@avisonyoung.com

500 W Cypress Creek Road
Suite 550
Fort Lauderdale, FL 33309

Property Location



RESTAURANTS

- 1 Houston's
- 2 Seasons 52
- 3 Starbucks
- 4 Morton's Steakhouse
- 5 New York Prime

MISCELLANEOUS

- 1 Florida Atlantic University
- 2 Whole Foods
- 3 Boca Raton Museum of Art
- 4 Mizner Park
- 5 Town Center at Boca Raton
- 6 Waldorf Astoria
- 7 Boca Raton Airport Authority

Greg Martin, Principal
D 954 903 3900
greg.martin@avisonyoung.com

Justin Cope, Principal
D 954 903 3701
justin.cope@avisonyoung.com

Lisa Blumer, Senior Associate
D 954 903 3703
lisa.blumer@avisonyoung.com

500 W Cypress Creek Road
Suite 550
Fort Lauderdale, FL 33309