

FOR SALE

RARE AGRICULTURAL DEVELOPMENT OPPORTUNITY



SITE

0 Gum Road | Holly Hill, SC 29059

Property Description

A Working 89-acre farm! This highly productive family-owned farm has been in the same family for generations. We estimate for well over 100 years. The time has come to get out of the way of the burgeoning growth directly southeast of Holly Hill.

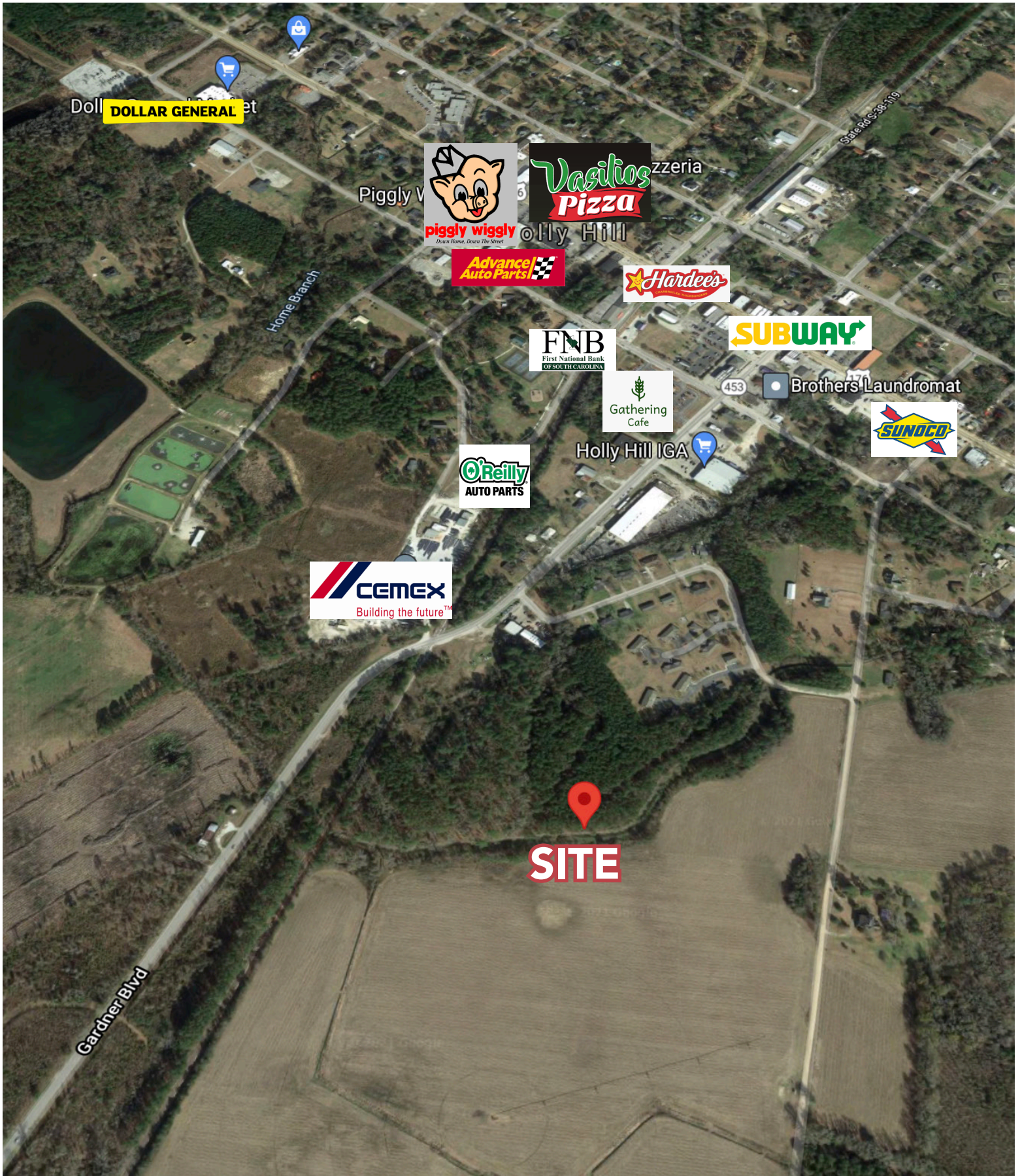
The dynamic forces of the Charleston economy, and the dramatic demand for affordable housing is driving the growth to our beloved Holly Hill.

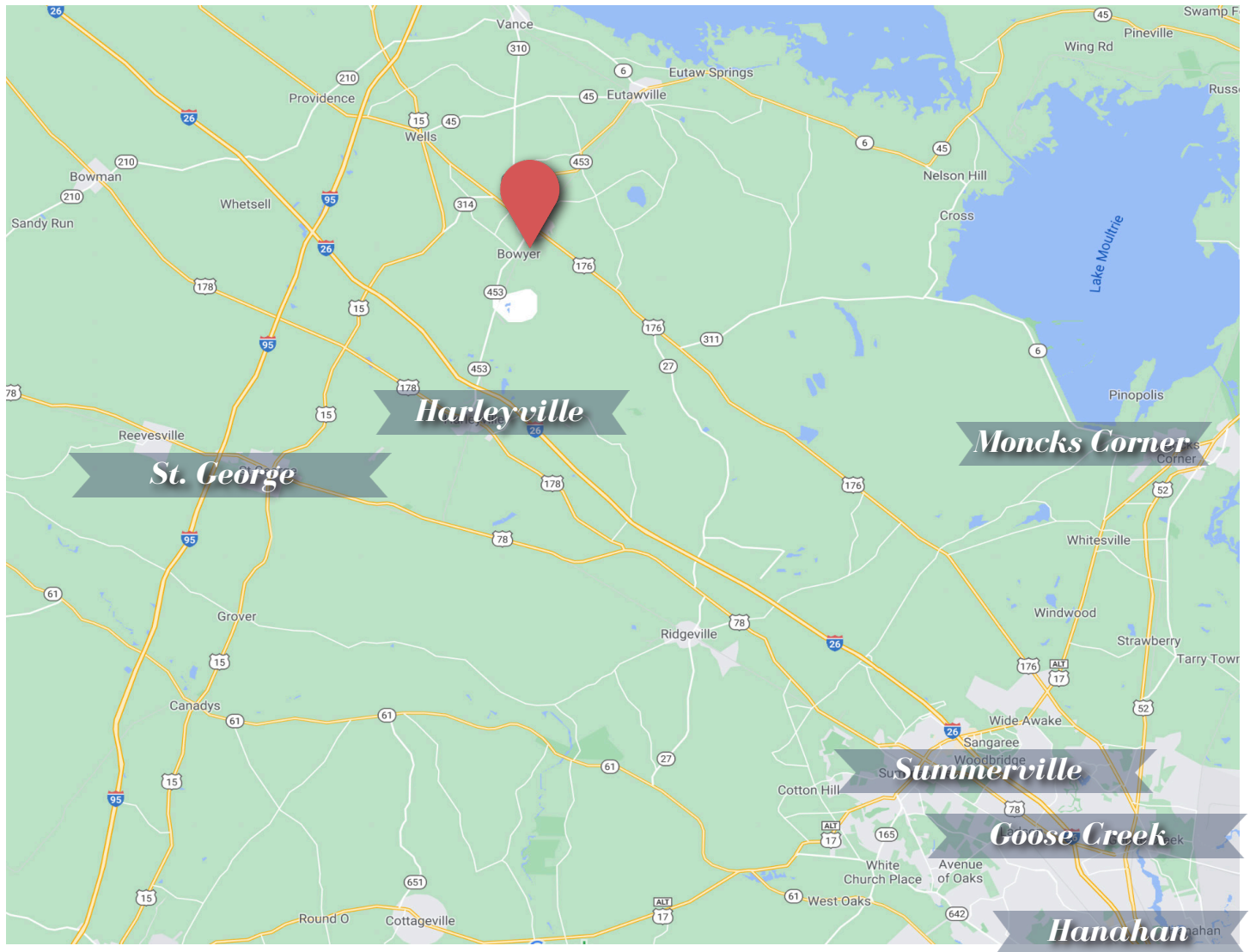
This would be a perfect residential community or commercial project. The possibilities are limitless. Our County and City Governments are cooperative and welcoming. Convenient access to I-26, and Hwy 176. The property borders RAIL along its entire length.

Put your visionary hat on, and call for a tour!

Property Details

FOR SALE:	\$1,793,000
SPACE AVAILABLE:	87 Acres
PROPERTY USE:	Agricultural
TAX ID:	0333-00-05-004
COUNTY:	Orangeburg





NEAL WALSH
Broker

843-744-9877 (O)
843-330-3787 (D)
nwalsh@cbcatlantic.com



The information contained herein should be considered confidential and remains the sole property of Coldwell Banker Commercial Atlantic at all times. Although every effort has been made to ensure accuracy, no liability will be accepted for any errors or omissions. Disclosure of any information contained herein is prohibited except with the express written permission of Coldwell Banker Commercial Atlantic.