

AIRPORT WAY CORPORATE PARK

NE AIRPORT WAY & NE GLENN WIDING | PORTLAND, OR



FOR MORE
INFORMATION
PLEASE
CONTACT

Cara Nolan

503.221.4840

cara.nolan@cbre.com

www.cbre.com/cara.nolan

CB Richard Ellis | 1300 SW Fifth Avenue | Suite 3000 | Portland, OR 97201

© 2010 CB Richard Ellis, Inc. This information has been obtained from sources believed reliable. We have not verified it and make no guarantee, warranty or representation about it. Any projections, opinions, assumptions or estimates used are for example only and do not represent the current or future performance of the property. You and your advisors should conduct a careful, independent investigation of the property to determine to your satisfaction the suitability of the property for your needs.

CBRE
CB RICHARD ELLIS

www.cbre.com/
portland

AIRPORT WAY CORPORATE PARK

NE AIRPORT WAY & NE GLENN WIDING | PORTLAND, OR



- +/-3,673 - 21,222 SF warehouse/flex spaces available
- Variety of spaces available with creative options
- Located just off I-205 and Airport Way minutes from Portland International Airport and Cascade Station
- Wet sprinkler system fire protection
- Quality concrete tilt-up construction
- Zoned IG2, City of Portland
- Rigid Insulation built-up roof in Buildings 2 & 3

www.cbre.com/awcp

FOR MORE
INFORMATION
PLEASE
CONTACT

Cara Nolan

503.221.4840

cara.nolan@cbre.com

www.cbre.com/cara.nolan

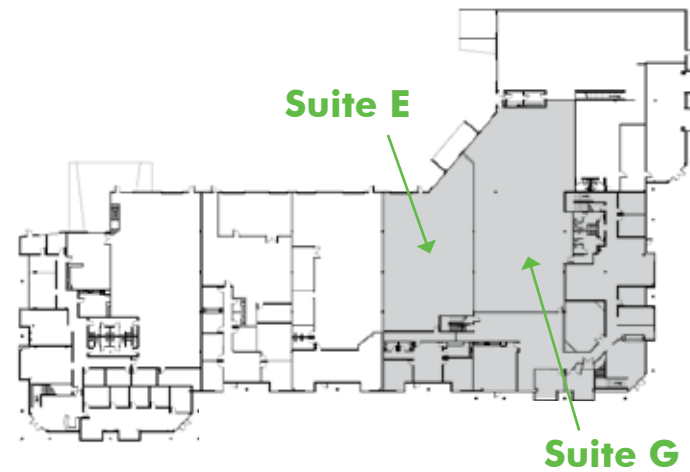
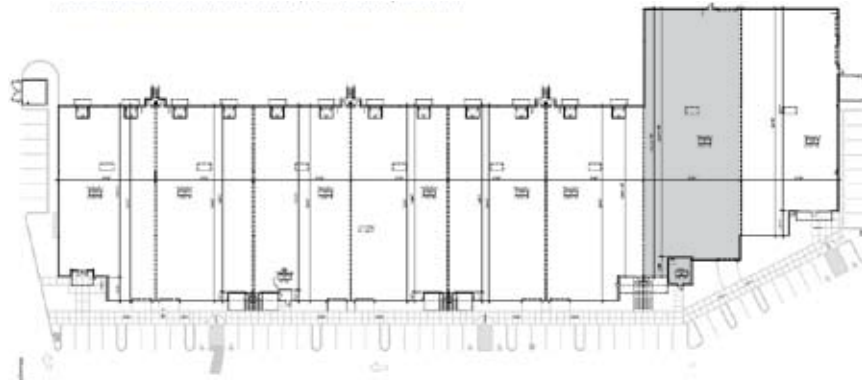


CBRE
CB RICHARD ELLIS



- +/-9,582 SF shell, BTS office
- Possible to expand into adjacent suite for a total of +/-17,642 SF
- Two (2) grade doors
- +/-24' clear height
- \$.42/SF/Mo. NNN w/ \$.75/SF/Mo. Office

Bldg 2
12067 NE Glenn Widing
Suite 107



- +/-5,607 SF shell
- +/-1,602 SF office
- One (1) dock door, Two (2) grade doors
- +/-19' clear height
- \$.42/SF/Mo. NNN w/ \$.75/SF/Mo. Office Surcharge

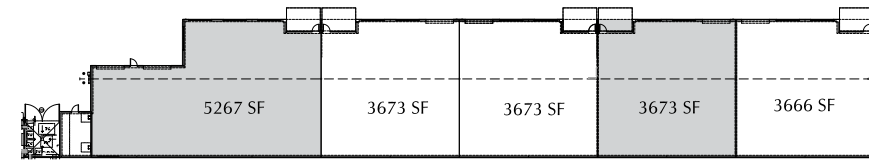
Bldg 1
12021 NE Airport Way
Suite E



Bldg 1
12021 NE Airport Way
Suite G



- +/-14,322 SF shell containing +/-6,060 SF warehouse,
- +/-8,262 SF 1st Floor Office, +/-7,092 SF 2nd Floor Office
- One (1) dock door, One (1) grade door
- +/-19' clear height
- \$11,000/Mo. NNN



Bldg 3
12055 NE Glenn Widing
Suite 201



- +/-5,267 SF shell containing +/-810 SF Office
- Two (2) grade doors
- Sprinkler: Ordinary Hazard
- Column Spacing: Clear Span
- Insulation: Rigid
- +/-18' clear height
- \$3,500/Mo. NNN

Bldg 3
12055 NE Glenn Widing
Suite 204



- +/-3,673 SF shell containing +/-810 SF Office
- One (1) grade door
- Sprinkler: Ordinary Hazard
- Column Spacing: Clear Span
- Insulation: Rigid
- +/-18' clear height
- \$2,500/Mo. NNN