

PIXEL PERFECT NEW RETAIL SPACE

..... NOW LEASING

AMLI

SOUTH
Lake
union

Zoom in on your next location in Seattle's coveted South Lake Union. Two spaces available at AMLI South Lake Union, a new mixed use building located in SLU's Cascade micro-neighborhood. Cascade is an outdoor retail mecca with **REI**, **Snowboard Connection**, **Born to Run** and **Feathered Friends** in the immediate vicinity.

In addition to well-paying tech jobs at **Amazon's** headquarters, SLU houses headquarters for **Fred Hutchinson Cancer Research Center**, **PATH**, **Group Health**, **Tommy Bahama**, and a new satellite location for **Northeastern University**. Neighborhood retailers and restaurants include **Whole Foods**, **West Elm**, **Cactus**, **Brave Horse** and **Flying Fish**.

PROPERTY DETAILS

AMLI South Lake Union is a recently completed 175-unit apartment building in the Cascade micro-neighborhood of SLU.

LOCATION:

1260 Republican St
Seattle, WA 98109

Space suited for retail or restaurant/bar with outside seating possible

Corner location available:

- **2,417** rsf (22' ceiling height)

PARKING: 26 retail spaces

RENT: \$30.00 psf/yr + \$8.00 NNN

GROWING NEIGHBORHOOD:

1,978 luxury apartment units in development within 1/4 mile of AMLI SLU, adding to an already vibrant mixed use neighborhood.



CONTACT:

Aaron Bennett | 206.859.4500 | AaronB@jshproperties.com

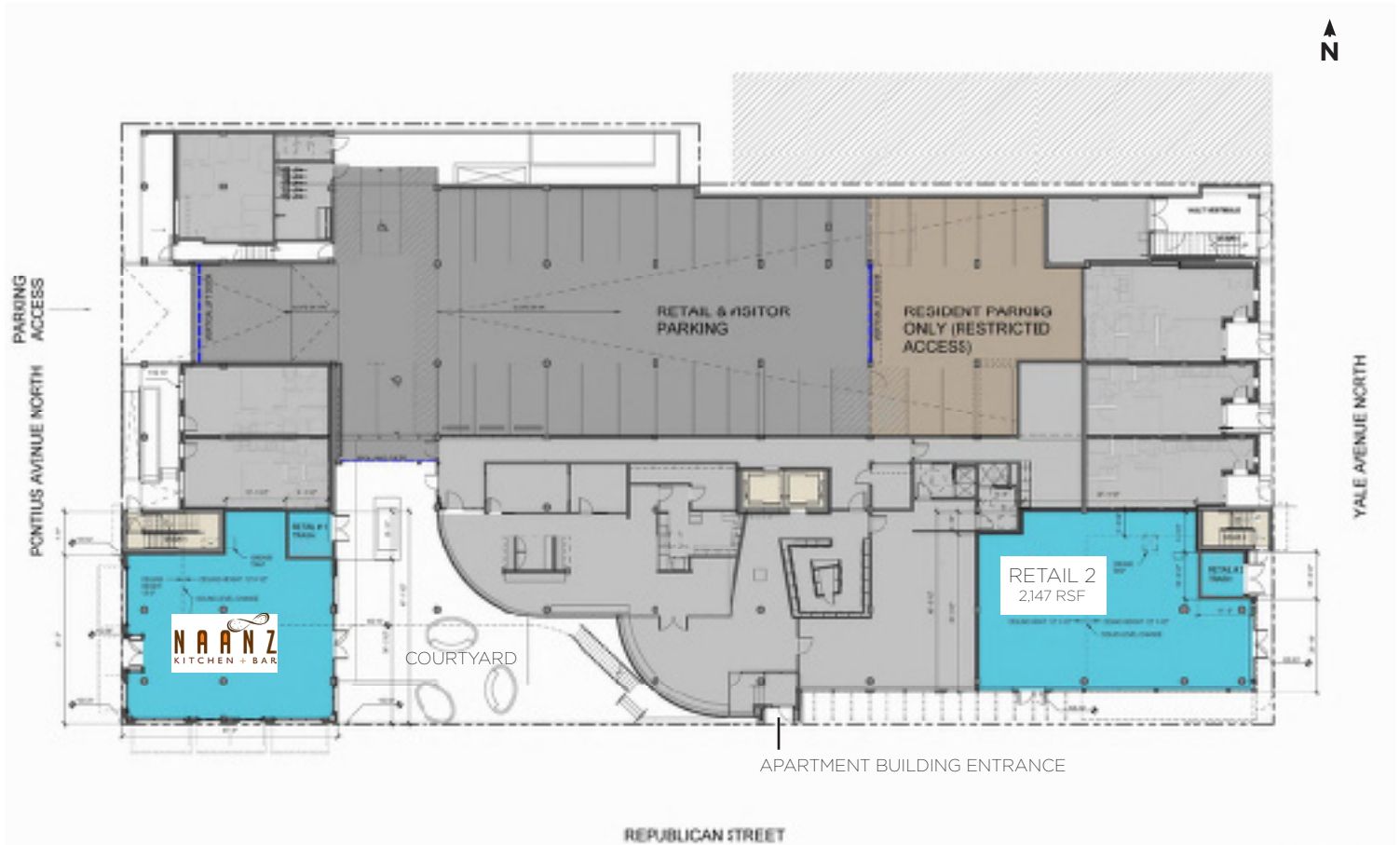
 JSH | PROPERTIES, INC.

1260 Republican Street, Seattle WA 98109



SOUTH
Lake
union

RETAIL SPACE FOR LEASE



DEMOGRAPHICS

	1 mile	3 mile	5 mile
Population	50,671	218,993	415,295
Average income	\$70,328	\$84,489	\$92,665

CONTACT:

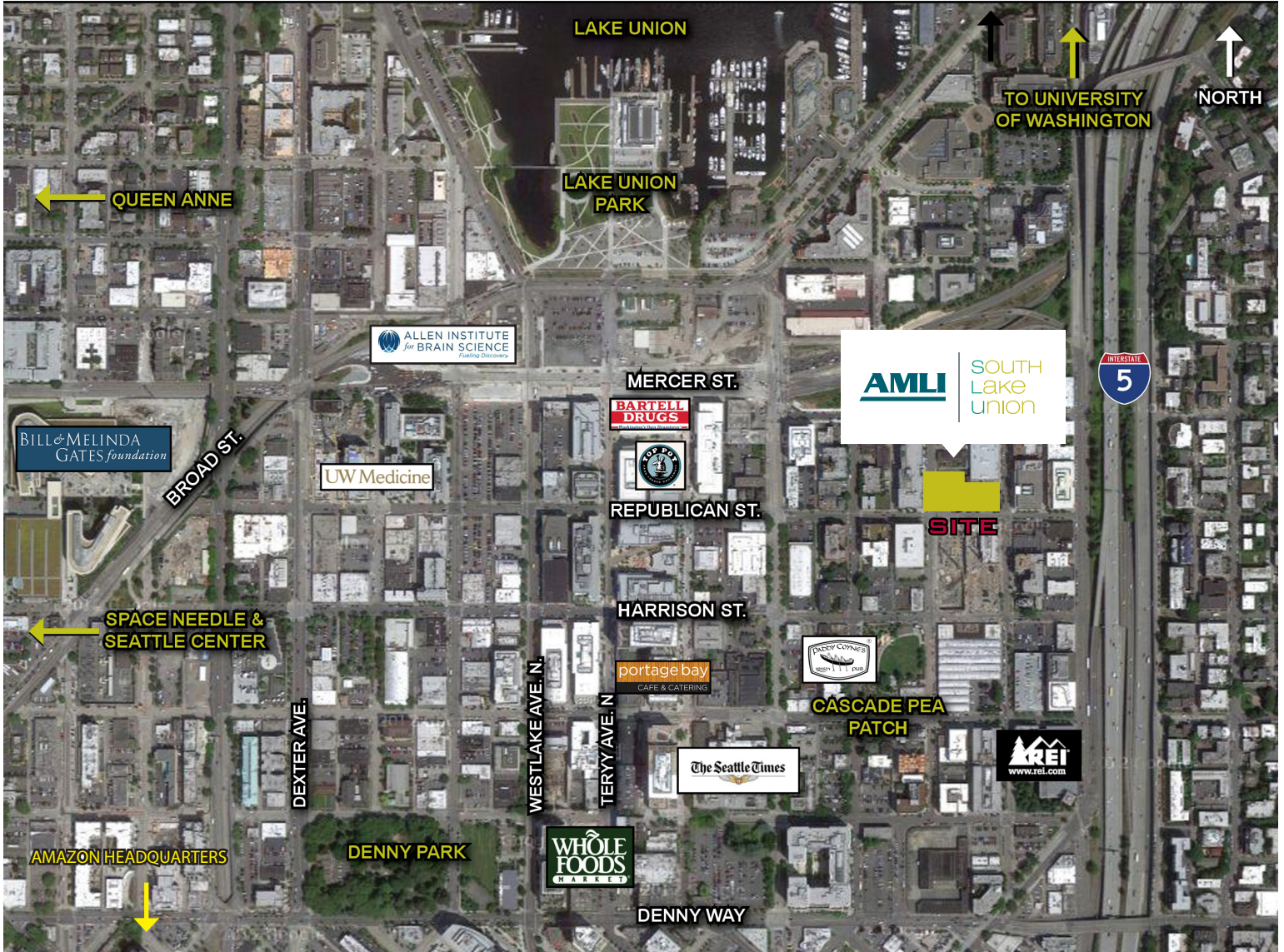
Aaron Bennett | 206.859.4500 | AaronB@jshproperties.com



1260 Republican Street, Seattle WA 98109

INCREASE YOUR BUSINESS BANDWIDTH IN SOUTH LAKE UNION

ADJACENT NEIGHBORHOOD RETAILERS



CONTACT:

Aaron Bennett | 206.859.4500 | AaronB@jshproperties.com



1260 Republican Street, Seattle WA 98109