

165



MERCER

UNIQUE AND EXCLUSIVE PENTHOUSE OPPORTUNITY IN SOHO



[CLICK FOR VIRTUAL TOUR](#)



A PROUD PLACE OF WORK SINCE 1870

DOUGLAS REGAL
212 841 5044
douglas.regal@cushwake.com

JAMIE KATCHER
212 841 7597
jamie.katcher@cushwake.com

SEBASTIAN INFANTE
212 841 7730
sebastian.infante@cushwake.com



©2020 Cushman & Wakefield. All rights reserved. The information contained in this communication is strictly confidential. This information has been obtained from sources believed to be reliable but has not been verified. NO WARRANTY OR REPRESENTATION, EXPRESS OR IMPLIED, IS MADE AS TO THE CONDITION OF THE PROPERTY (OR PROPERTIES) REFERENCED HEREIN OR AS TO THE ACCURACY OR COMPLETENESS OF THE INFORMATION CONTAINED HEREIN, AND SAME IS SUBMITTED SUBJECT TO ERRORS, OMISSIONS, CHANGE OF PRICE, RENTAL OR OTHER CONDITIONS, WITHDRAWAL WITHOUT NOTICE, AND TO ANY SPECIAL LISTING CONDITIONS IMPOSED BY THE PROPERTY OWNER(S). ANY PROJECTIONS, OPINIONS OR ESTIMATES ARE SUBJECT TO UNCERTAINTY AND DO NOT SIGNIFY CURRENT OR FUTURE PROPERTY PERFORMANCE.



PROPERTY INFORMATION

ENTIRE 5TH FLOOR
4,897 RSF

ENTIRE 6TH FLOOR
4,156 RSF

TOTAL
9,053 RSF

SPACE FEATURES

- Boutique full floors in the heart of Soho
- Landlord will build to suit
- 10'-12' ceilings throughout
- Efficient, column free floor plate
- PH Duplex features an exclusive terrace overlooking Mercer Street





PROPERTY PHOTOS



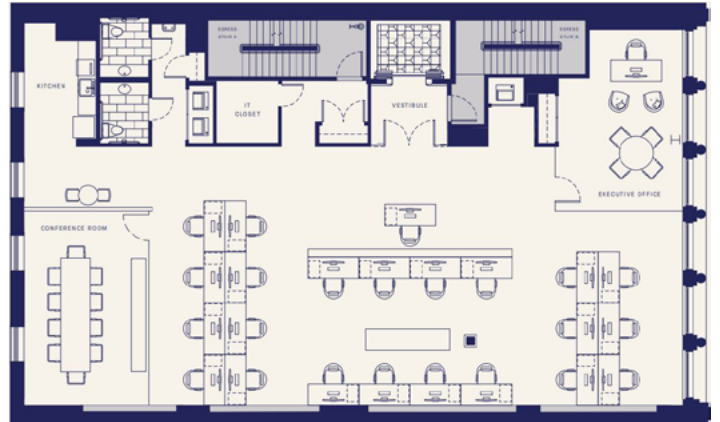


FLOOR PLANS

CORE & SHELL



TEST FITS



TYPICAL FLOOR

5TH FLOOR



6TH FLOOR





AREA MAP

