

Publix #0604 - Shoppes at Pelican Landing

24600 S Tamiami Trail
Bonita Springs, FL 34134
Lat 26.381, Long -81.808

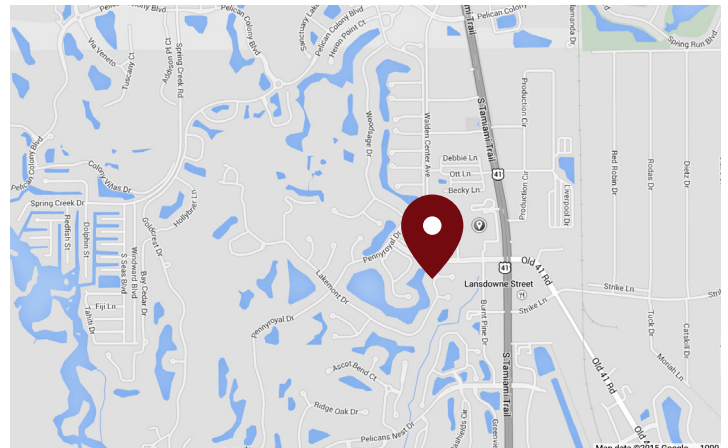
FOR LEASE



1,300 - 7,700 SF AVAILABLE

PROPERTY HIGHLIGHTS

- Cape Coral-Fort Myers MSA - the Sixth Most Populated MSA in Florida
- Bonita Springs is Located South of Fort Myers and North of Naples
- One Mile South of Simon's 1.25 Million SF Town Center Coconut Point Outdoor Mall Featuring Super Target, Bed Bath & Beyond, Dillards, Michaels, PetSmart, Ross, Sports Authority, Ulta and Others
- Property Serves Several Upscale Planned Communities Including Pelican Landings
- Combined Traffic Count: 60,500 VPD



DEMOGRAPHICS	1 Mile	3 Miles	5 Miles
Total Population	4,011	31,386	79,608
Daytime Population	5,750	39,020	86,594
Total Households	1,996	15,025	36,818
Avg. HH Income	\$129,449	\$123,319	\$105,200

Data provided by Placer Labs Inc. (www.placer.ai) & Esri

Fernando Espino

Office: 305.342.4629 | Cell: 305.632.1809 | fespino@crossmanco.com
2655 South Le Jeune Road, Suite 908, Miami, FL

Licensed Real Estate Broker. No warranty expressed or implied has been made to the accuracy of the information provided herein, no liability assumed for error or omission.



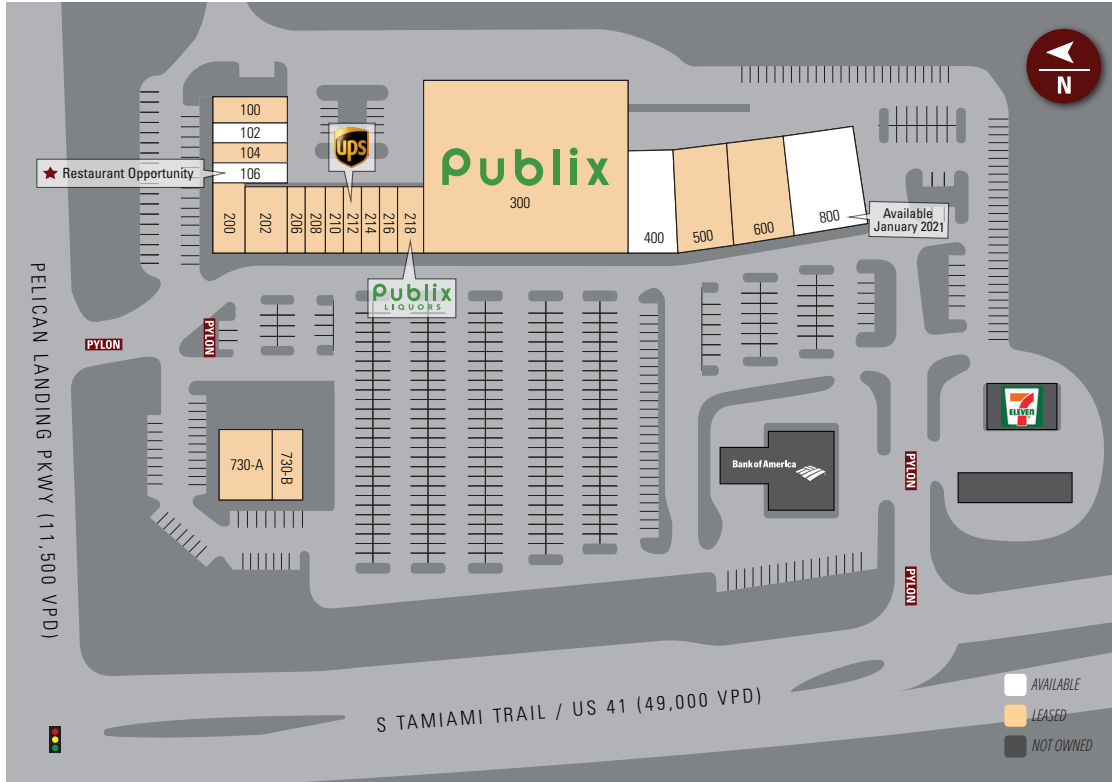
Crossman & Company

www.crossmanco.com

Publix #0604 - Shoppes at Pelican Landing

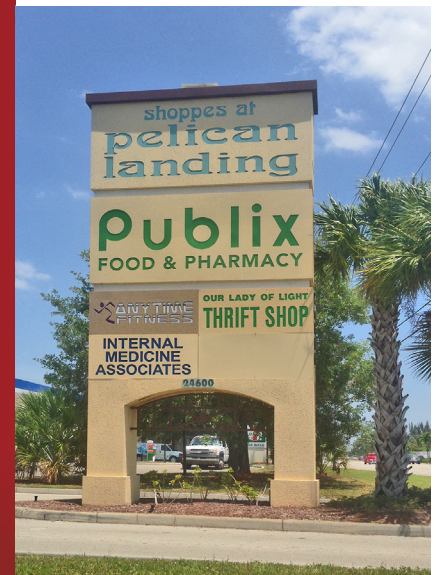
24600 S Tamiami Trail
Bonita Springs, FL 34134
Lat 26.381, Long -81.808

SITE PLAN



Suite	Tenant	Size
300	Publix	37,887
100	Pino's Pizza	1,625
102	AVAILABLE (20 x 65)	1,300
104	Classic Cleaners	1,300
106	AVAILABLE	1,300
200	Poached	2,525
202	LaFontanella Ristorante	1,950
206	Kelly Dainiak, DMD Dental Care	1,300
208	Amore Jewelers	1,300
210	Bonita Nail Spa	1,300
212	The UPS Store	1,300
214	Feliz Andrew Salon	1,300
216	Frame It	1,300
218	Publix Liquors	1,625
400	AVAILABLE (30 x 130)	4,000
500	Internal Medicine Associates	7,300
600	Our Lady of the Light Thrift Store	5,000
800	AVAILABLE January 2021	7,700
730A	British Open Pub	3,085
730B	Bistro	1,855

TOTAL 86,262



Fernando Espino

Office: 305.342.4629 | Cell: 305.632.1809 | fespino@crossmanco.com
2655 South Le Jeune Road, Suite 908, Miami, FL

Licensed Real Estate Broker. No warranty expressed or implied has been made to the accuracy of the information provided herein, no liability assumed for error or omission.



Crossman & Company

www.crossmanco.com

Publix #0604 - Shoppes at Pelican Landing

24600 S Tamiami Trail
Bonita Springs, FL 34134
Lat 26.381, Long -81.808

FOOT TRAFFIC OVERVIEW

EST. # OF CUSTOMERS ANNUALLY

 **103,400**

EST. # OF VISITS ANNUALLY

 **493,800**

AVG. VISITS / CUSTOMER

 **4.78**

AVG. LENGTH-OF-STAY / VISIT

 **36 MIN**

TOP 3 DAYS



Sunday	77,718
Saturday	76,434
Monday	76,119

OF VISITS

TOP 3 HOURS

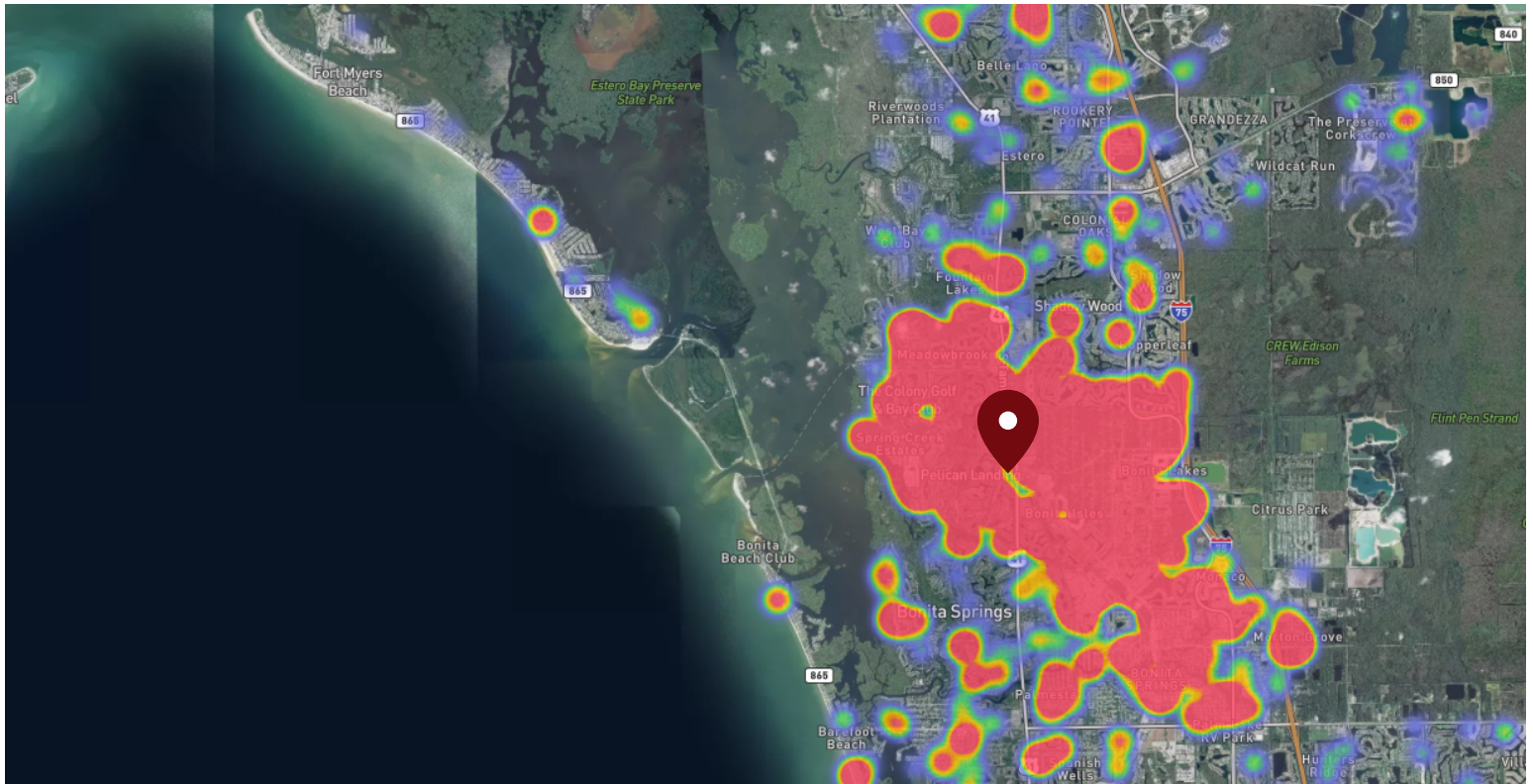


2-1 PM	80,744
4-5 PM	79,745
3-4 PM	79,519

OF VISITS

Data provided by Placer Labs Inc. (www.placer.ai) Dec 1, 2019 - Nov 30, 2020

SITE VISIT DENSITY



Red, orange, and yellow colors represent the location of 60% of site visitors

Data provided by Placer Labs Inc. (www.placer.ai)

Fernando Espino

Office: 305.342.4629 | Cell: 305.632.1809 | fespino@crossmanco.com
2655 South Le Jeune Road, Suite 908, Miami, FL

Licensed Real Estate Broker. No warranty expressed or implied has been made to the accuracy of the information provided herein, no liability assumed for error or omission.



Crossman & Company

www.crossmanco.com