

# 704 BROADWAY

BETWEEN EAST 4TH STREET AND WASHINGTON PLACE



## SIZE

Ground	4,619 SF
Mezzanine	1,898 SF
Lower Level	3,698 SF

## CEILING HEIGHT

Ground	20 Feet
Lower Level	10 Feet

## FRONTAGE

Approximately 30 Feet

## RENT

Upon Request

## COMMENTS...

- Tremendous exposure in the heart of NoHo
- Directly across from NYU and steps from The Cooper Union campus
- Soaring ceiling heights
- 24/7 foot traffic, steps from the Astor Place and Broadway-Lafayette Street subway stations

## NEIGHBORS INCLUDE...

Foot Locker, Equinox, Lids, Soul Cycle, Fresh & Co., Starbucks, Superdry, La Colombe, GNC, Pret A Manger, Gap, The Body Shop, Sunglass Hut, Rumble Boxing, New York Sports Club, Sweetgreen

## MASS TRANSPORTATION...

Source: MTA NYC Transit - 2015 Subway & Bus Ridership Report

		ANNUAL	WEEKDAY	WEEKEND
<b>N R</b>	8th Street - NYU	5,894,747	17,902	24,844
<b>6</b>	Astor Place	5,447,655	17,274	19,413
<b>B D F M</b>	Broadway-Lafayette	12,666,868	39,724	47,332

**Newmark Grubb  
Knight Frank**

Retail

[www.ngkf.com/retail](http://www.ngkf.com/retail)

## CONTACT

Ross Kaplan 212.850.5418 [rkaplan@ngkf.com](mailto:rkaplan@ngkf.com)  
Derek Koelsch 212.372.0740 [derek.koelsch@ngkf.com](mailto:derek.koelsch@ngkf.com)

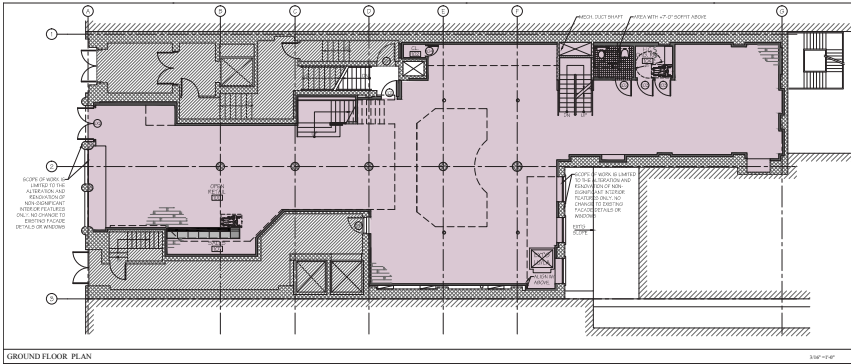


# 704 BROADWAY

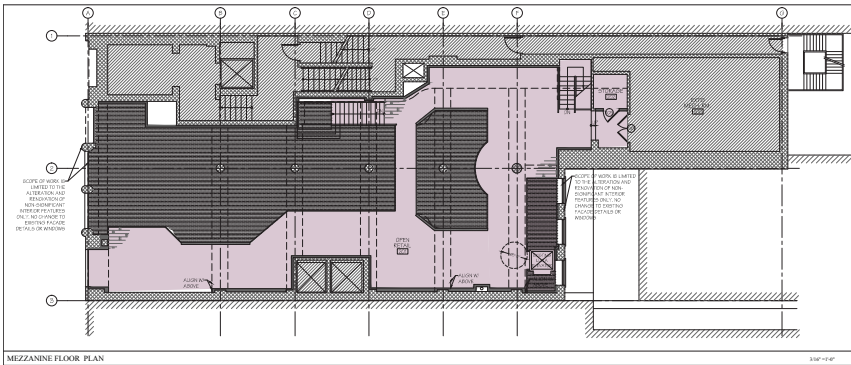
BETWEEN EAST 4TH STREET AND WASHINGTON PLACE ... NOHO

## FLOOR PLAN

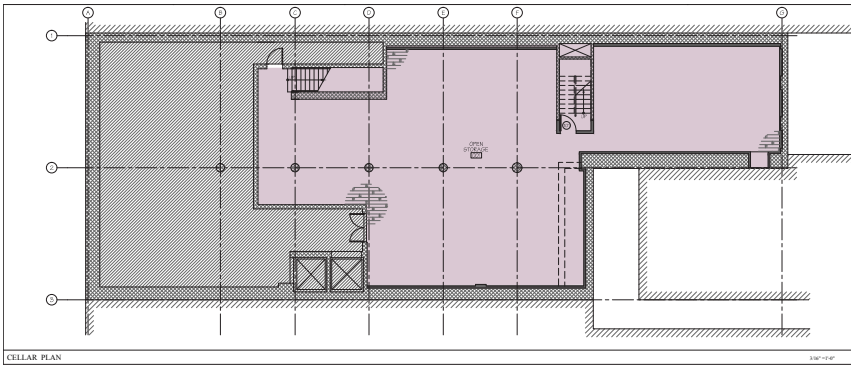
GROUND



MEZZANINE



LOWER LEVEL



E 8TH STREET

6

Starbucks

GAP

PRET A MANGER

ASTOR PLACE

W

swagstreet

VISC

the Vitamin Shoppe

Lids

NYC SALE

fresh&co

WAREHOUSE

The Famous Cozy Soup 'n' Burger

elf

PARKING GARAGE

at&t

THE BODY SHOP

citibank

PAPYRUS

sunglass hut

WAVELY PL

NYU BOOKSTORE

NYU TISCH SCHOOL OF THE ARTS

NYU GALLATIN SCHOOL

McDonald's

STQ

Superdry

Foot Locker

TEE-ZONE.COM

704 BROADWAY

Time Warner Cable

RUMBLE

W 4TH ST

E 4TH ST

DUANEREAD

MIZ MOOZ

Le Basket

W 3RD ST

W 3RD ST

BUILD NYC

MERCER STREET

BROADWAY

LAFAYETTE STREET

Newmark Grubb  
Knight Frank  
Retail

www.ngkf.com/retail

## CONTACT

Ross Kaplan 212.850.5418 rkaplan@ngkf.com  
Derek Koelsch 212.372.0740 derek.koelsch@ngkf.com

