

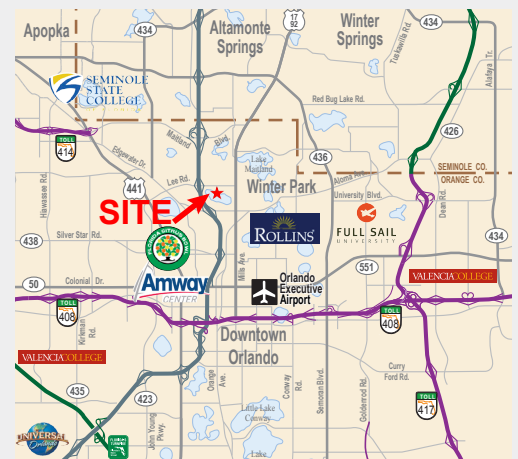


1850 Lee Road, Winter Park, Florida 32789

Property Features

- 136,747± SF, three-story office building with 2 elevators
- Full-service building with ample parking: 242 spaces on 3.14± acre site
- 24-hour access with evening building attendant
- Great location midway between I-4 and US Hwy 17-92; only 2 minutes to I-4 on-ramp
- Very close to Winter Park Village and downtown Winter Park
- Close to restaurants, banks and shopping
- Zoning: O-1 (Office)
- Easy access to Lee Road, I-4, US Hwy 17-92, Morse Blvd, Fairbanks Avenue and Orange Avenue

Available Space	
Suite 209	487± RSF
Suite 234	943± RSF
Suite 324/325	841± RSF



For more information:

Jeffrey W. Bloom, CCIM

+1 407 949 0709 • jbloom@realvest.com

Lease Rate is Negotiable - Contact Broker

09.17.19

The information contained herein has been given to us by the owner of the property or other sources we deem reliable. We have no reason to doubt its accuracy, but we do not guarantee it. All information should be verified prior to purchase or lease. Unless otherwise noted, the property is being offered as-is, where is, with all faults.

1800 Pembroke Drive, Suite 350

Orlando, Florida 32810

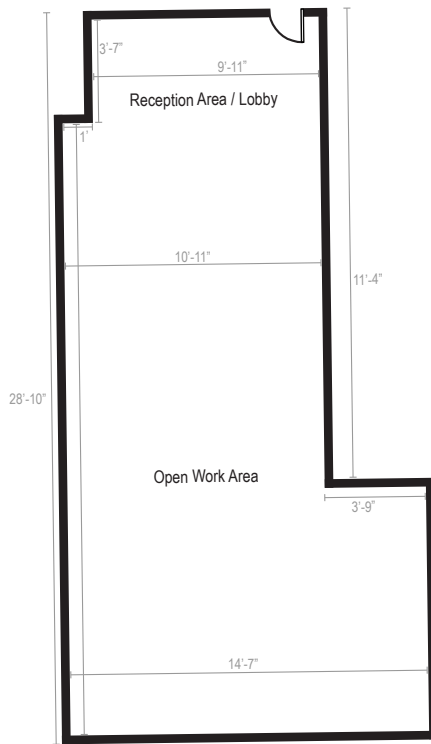
+1 407 875 9989

nairealvest.com

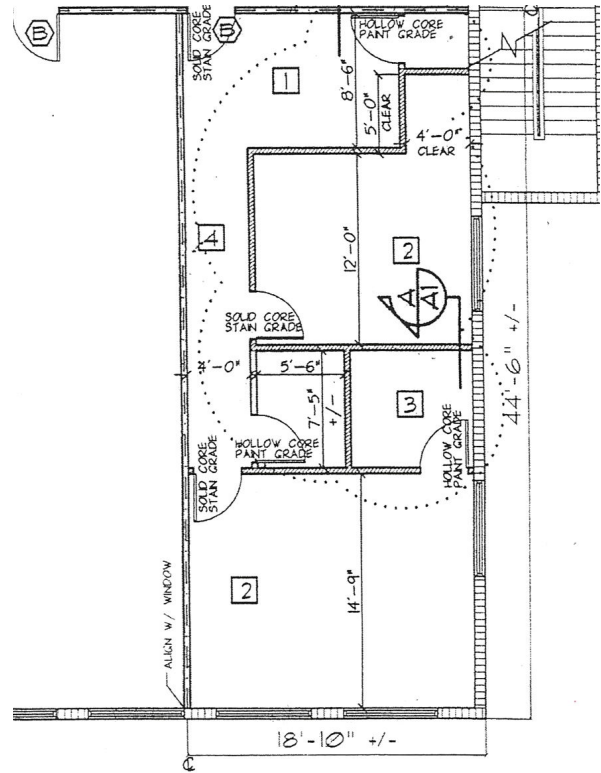
1850 Lee Road
Winter Park, Florida 32789

For Lease
**Lee World Center
Office Space**

Suite 209 487± RSF



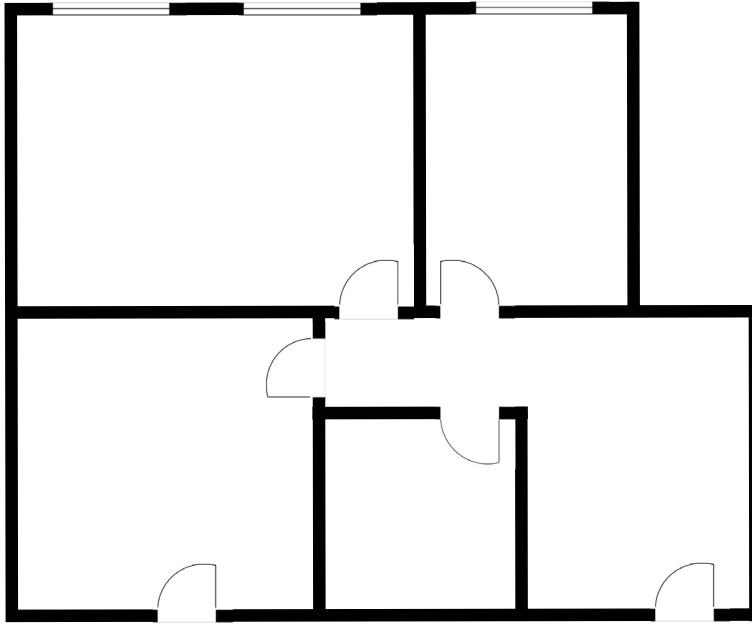
Suite 234 943± RSF



1850 Lee Road
Winter Park, Florida 32789

For Lease
**Lee World Center
Office Space**

Suite 324/325 841± RSF



For more information:

Jeffrey W. Bloom, CCIM

+1 407 949 0709

jbloom@realvest.com