

1448 - 1452 MYRTLE AVENUE

BUSHWICK, BROOKLYN



1452 MYRTLE

1450 MYRTLE

1448 MYRTLE



RETAIL SPACE
FOR LEASE

BUSHWICK BROOKLYN

1448 - 1452 MYRTLE AVENUE

SPACE HIGHLIGHTS

LOCATION

Between Menahan St
and Bleecker St

ZONING

R6

OCCUPANCY

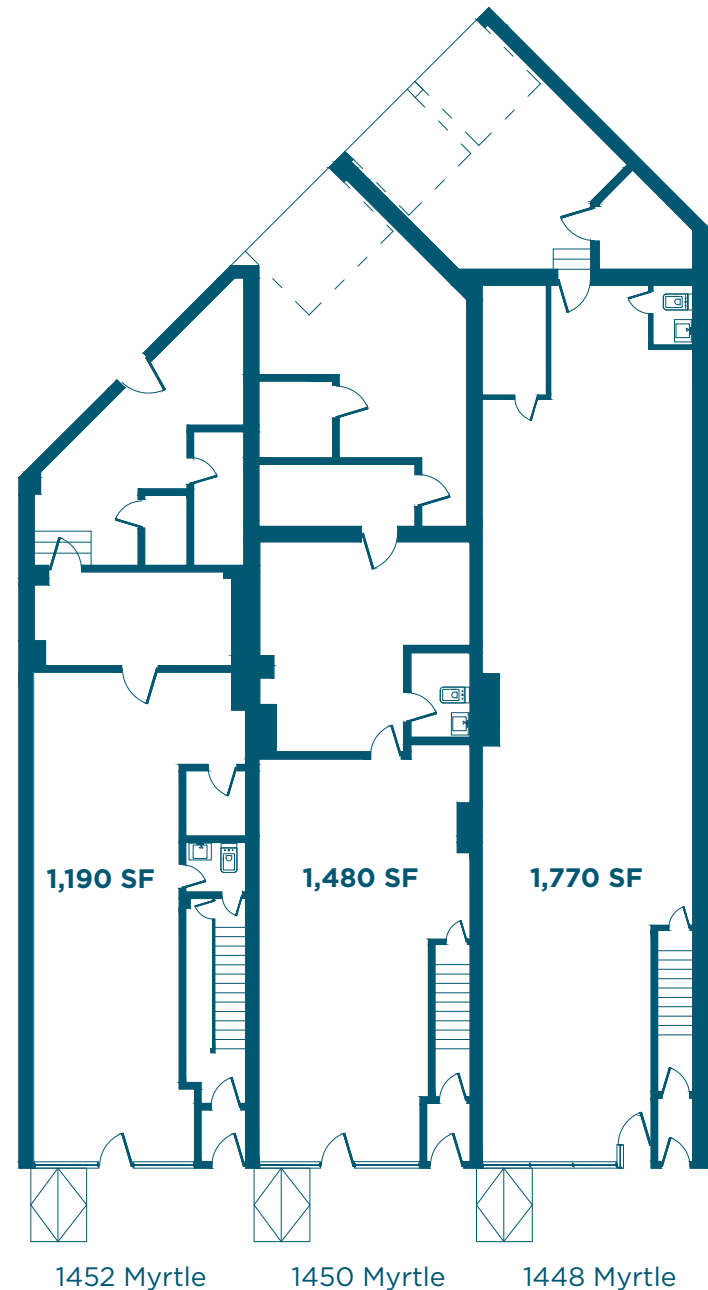
Immediate

ASKING RENT

Upon Request

HIGHLIGHTS

- Easy access to subway transportation through Brooklyn and Manhattan.
- Very high foot and vehicle traffic on Myrtle Avenue.
- Neighborhood is home to a vibrant community full of young professionals.
- Has basement space and operating HVAC system.



BUSHWICK BROOKLYN

1448 MYRTLE AVENUE

FLOORPLANS & DETAILS



1448 MYRTLE AVENUE

| | |
|-----------------------|-----------------|
| Space | 1,770 SF |
| Ceiling Height | 10 FT |
| Frontage | 15 FT |
| Dimensions | 18.6 FT X 94 FT |

BUSHWICK BROOKLYN

1448 MYRTLE AVENUE

EXISTING CONDITION

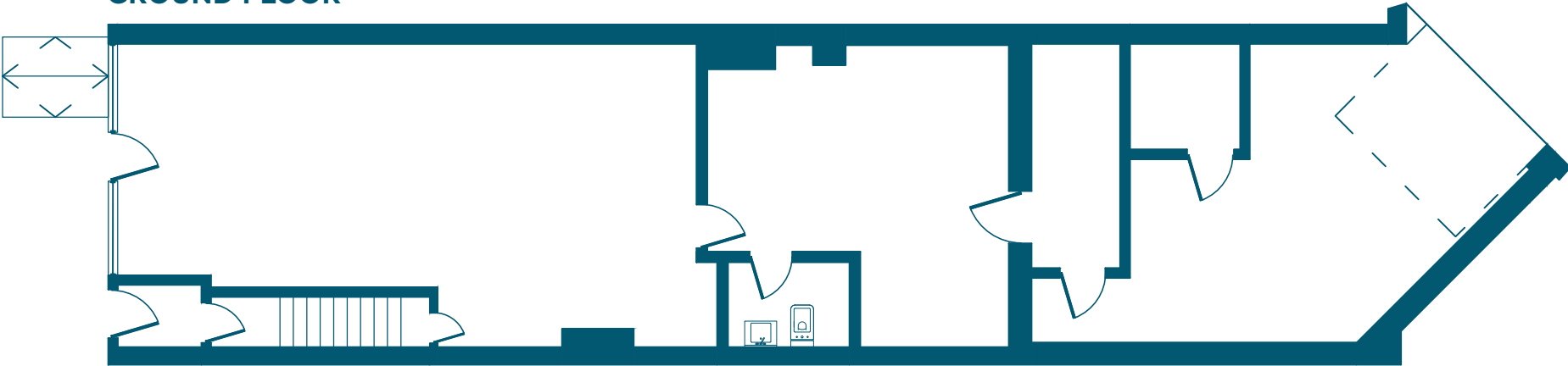


BUSHWICK BROOKLYN

1450 MYRTLE AVENUE

FLOORPLANS & DETAILS

GROUND FLOOR



LOWER LEVEL



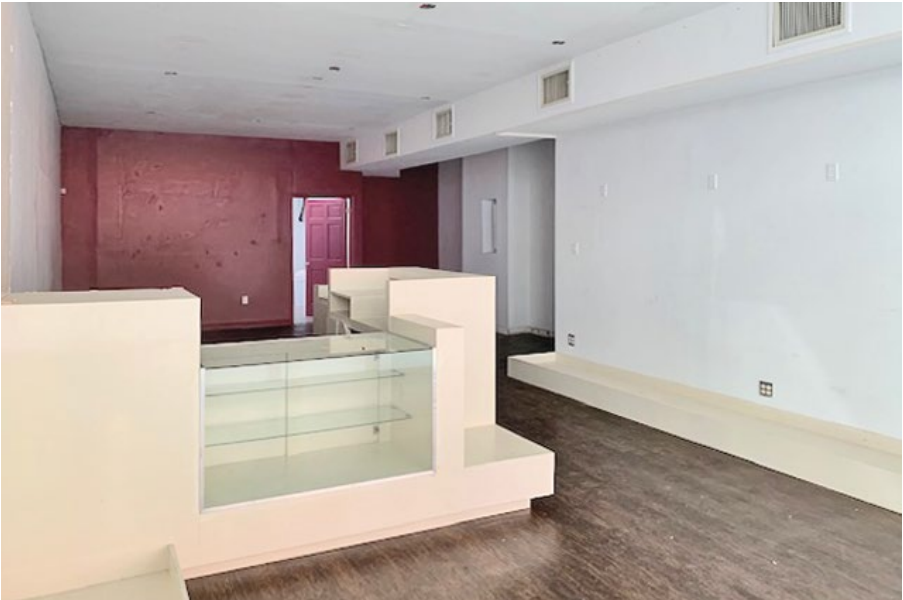
1450 MYRTLE AVENUE

| | |
|-----------------------|---------------|
| Space | 1,480 SF |
| Ceiling Height | 10 FT |
| Frontage | 14.75 FT |
| Dimensions | 19 FT X 78 FT |

BUSHWICK BROOKLYN

1450 MYRTLE AVENUE

EXISTING CONDITION



BUSHWICK BROOKLYN

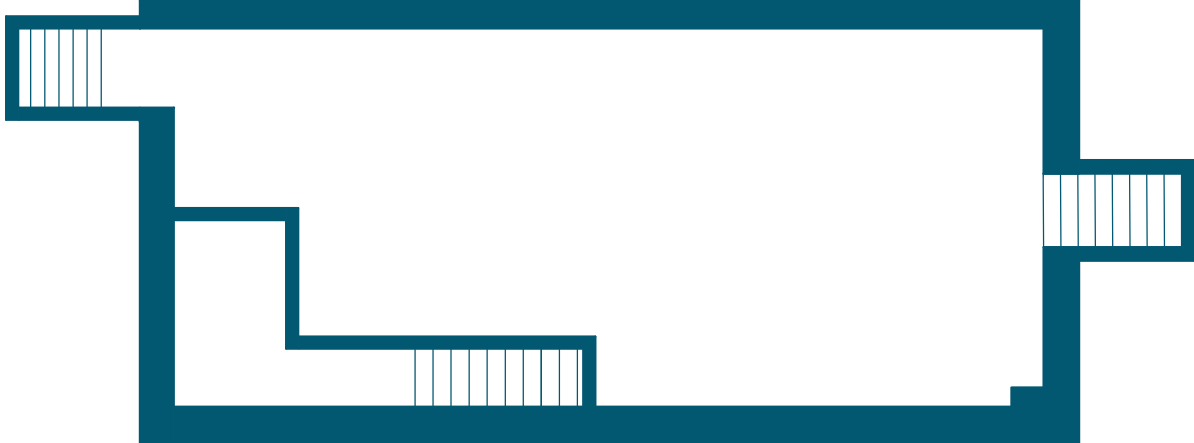
1452 MYRTLE AVENUE

FLOORPLANS & DETAILS

GROUND FLOOR



LOWER LEVEL



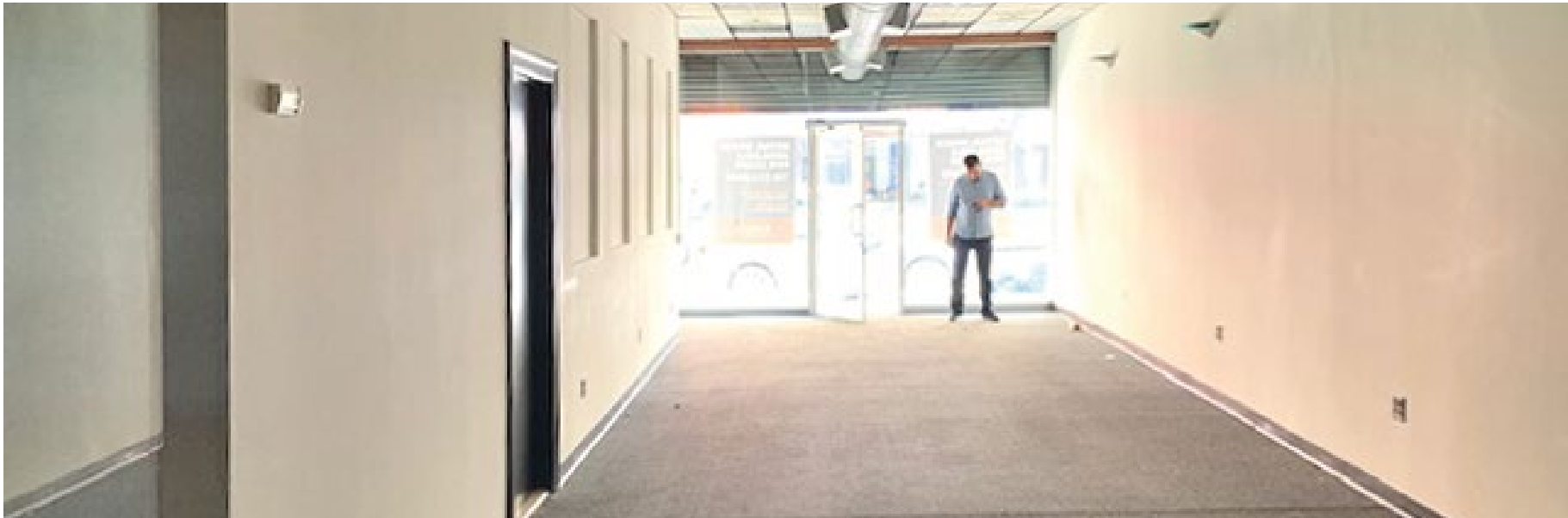
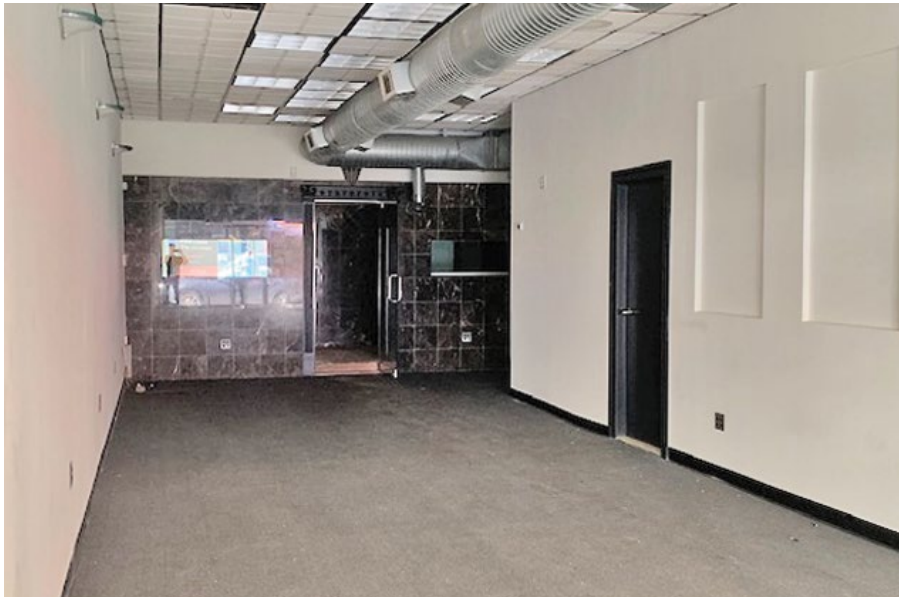
1452 MYRTLE AVENUE

| | |
|-----------------------|---------------|
| Space | 1,190 SF |
| Ceiling Height | 10 FT |
| Frontage | 14 FT |
| Dimensions | 17 FT X 70 FT |

BUSHWICK BROOKLYN

1452 MYRTLE AVENUE

EXISTING CONDITION



NEIGHBORHOOD DEMOGRAPHICS



181,315

POPULATION
WITHIN 1-MILE
RADIUS



35 Years

AVERAGE
POPULATION
AGE



4.12%

POPULATION
GROWTH
SINCE 2010



\$66,911

AVERAGE HHI
WITHIN 1-MILE
RADIUS



3,669

TOTAL BUSINESSES
WITHIN 1-MILE
RADIUS



\$1.2 bn

ANNUAL SPENDING
WITHIN 1-MILE
RADIUS

BUSHWICK BROOKLYN

1448 - 1452 MYRTLE AVENUE

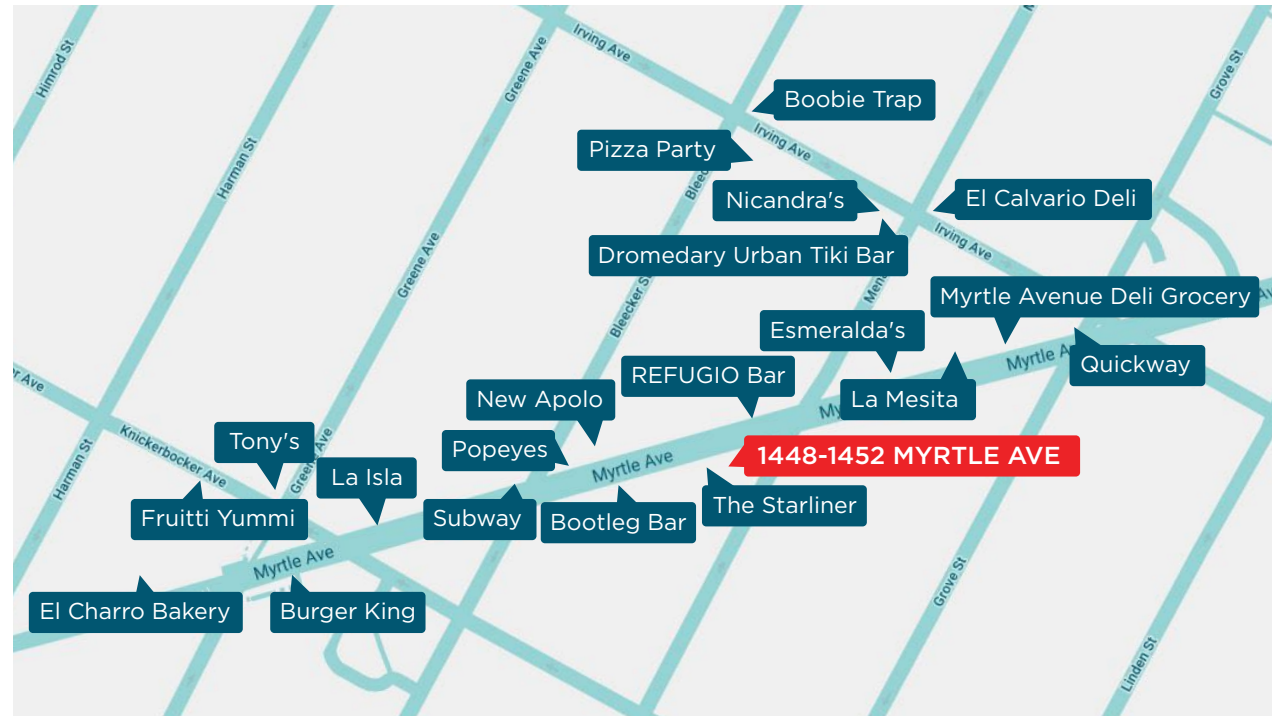
NEIGHBORHOOD & TRANSPORTATION

NEIGHBORHOOD TENANTS

- The Starliner
- Bootleg Bar
- Subway
- Burger King
- La Isla
- New Apolo
- REFUGIO Bar
- Esmeralda's
- Dromedary Urban Tiki Bar
- Nicandra's
- La Mesita
- Myrtle Avenue Deli Grocery
- Quickway
- Tony's
- Fruitti Yummi Ice Cream
- El Charro Bakery
- El Calvario Deli
- Pizza Party
- Popeyes Louisiana Kitchen
- Boobie Trap

TRANSPORTATION

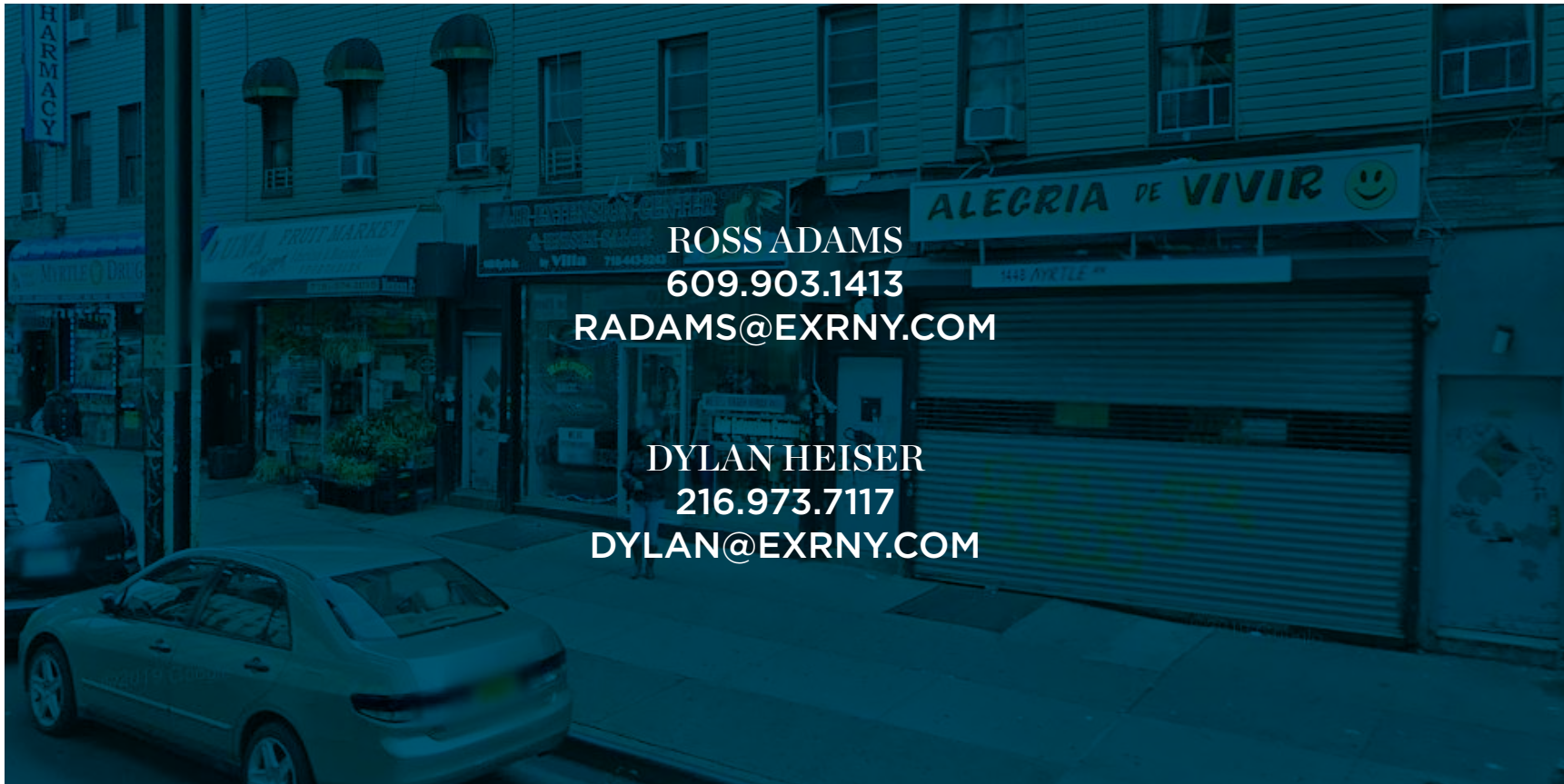
- 5 Min Walk at Myrtle Avenue (0.2 mi)
- 6 Min Walk at Central Avenue (0.3 mi)
- 9 Min Walk at Kosciuszko Street (0.4 mi)
- 16 Min Walk at Morgan Avenue (0.8 mi)



BUSHWICK BROOKLYN

1448 - 1452 MYRTLE AVENUE

CONTACT



ROSS ADAMS
609.903.1413
RADAMS@EXRNY.COM

DYLAN HEISER
216.973.7117
DYLAN@EXRNY.COM

