



1365

OFFICE SPACE FOR LEASE  
**POWER SYSTEMS BUILDING**

1365 Corporate Center Curve, Eagan MN 55121

**Eric Rapp, SIOR**  
612.359.1635  
eric.rapp@transwestern.com

OFFICE SPACE FOR LEASE

# POWER SYSTEMS BUILDING

1365 Corporate Center Curve, Eagan MN 55121



**BUILDING SIZE:** 23,736 SF

**AVAILABILITY:** 931 SF

**YEAR BUILT:** 1998

**R/U FACTOR:** 8%

**RENTAL RATES:** \$12.00 PSF NET

**TAX/OPS:** \$8.61 PSF (2020 EST)

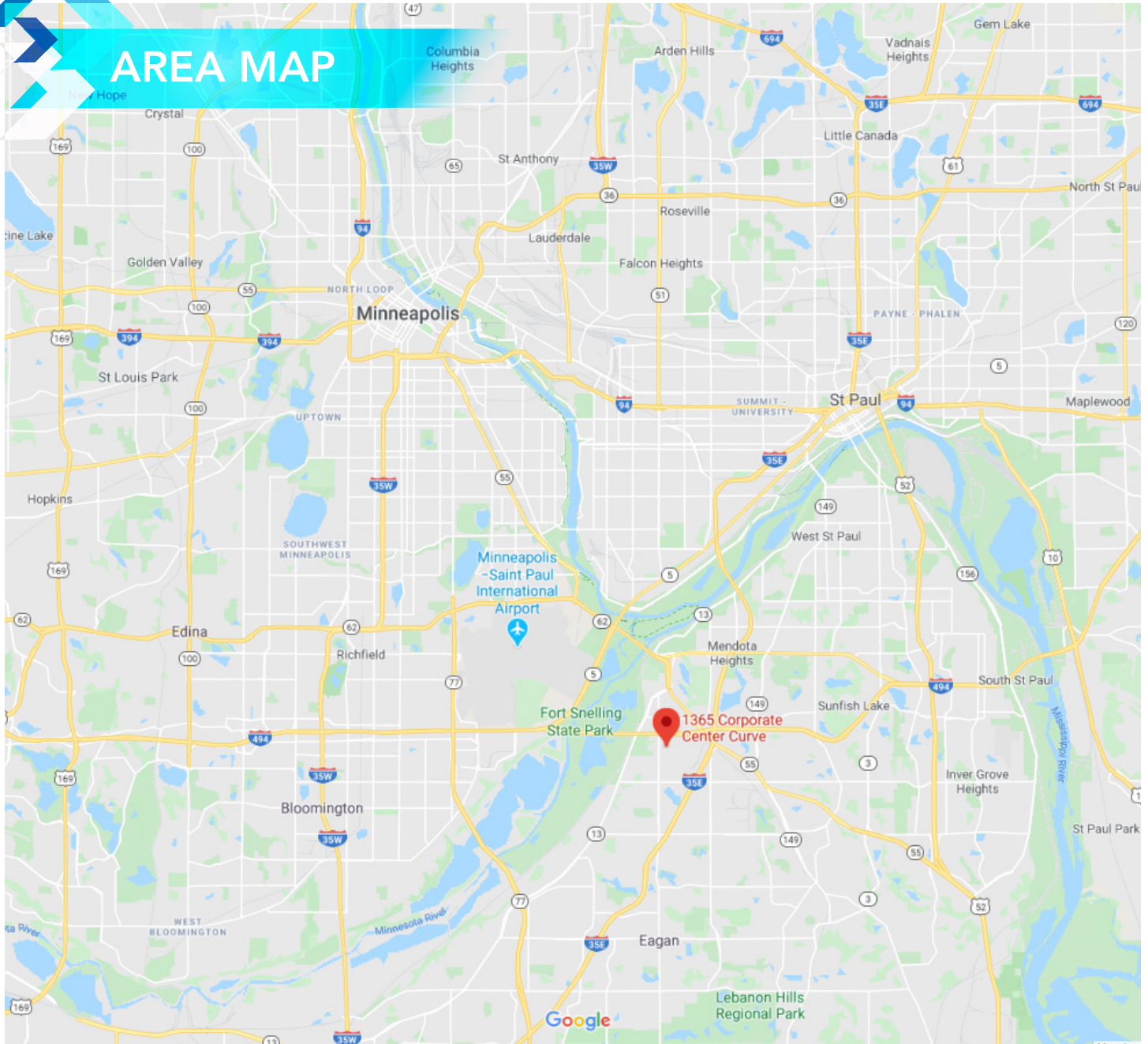
**PARKING:** 125 stalls

**LOCATION:** Easy access to I-494, I-35E, Highway 55 and Highway 13 via Pilot Knob Road

**AMENITIES:** Key card access, on-site management, ample parking

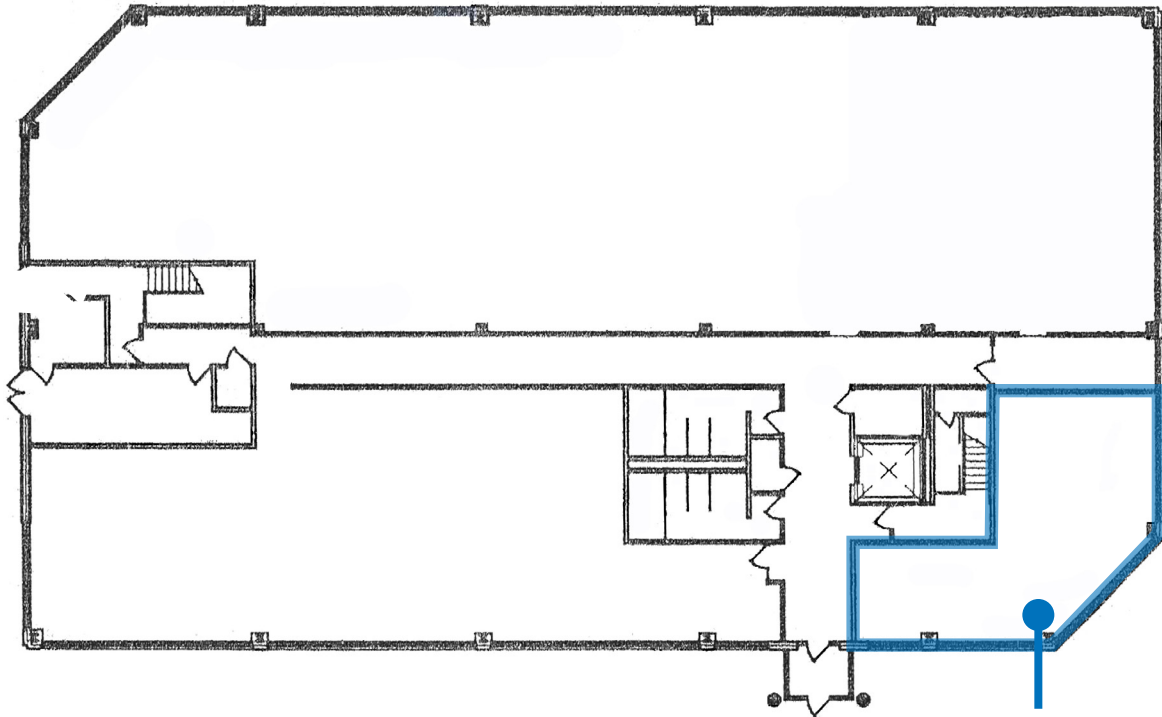


# AREA MAP



# AVAILABLE SPACE

PRIME LOCATION IN PREMIER SUBURBAN SUBMARKET



**SUITE 103**  
**931 SF**

For More Information, Contact:

**ERIC RAPP, SIOR**

612.359.1635

[eric.rapp@transwestern.com](mailto:eric.rapp@transwestern.com)