

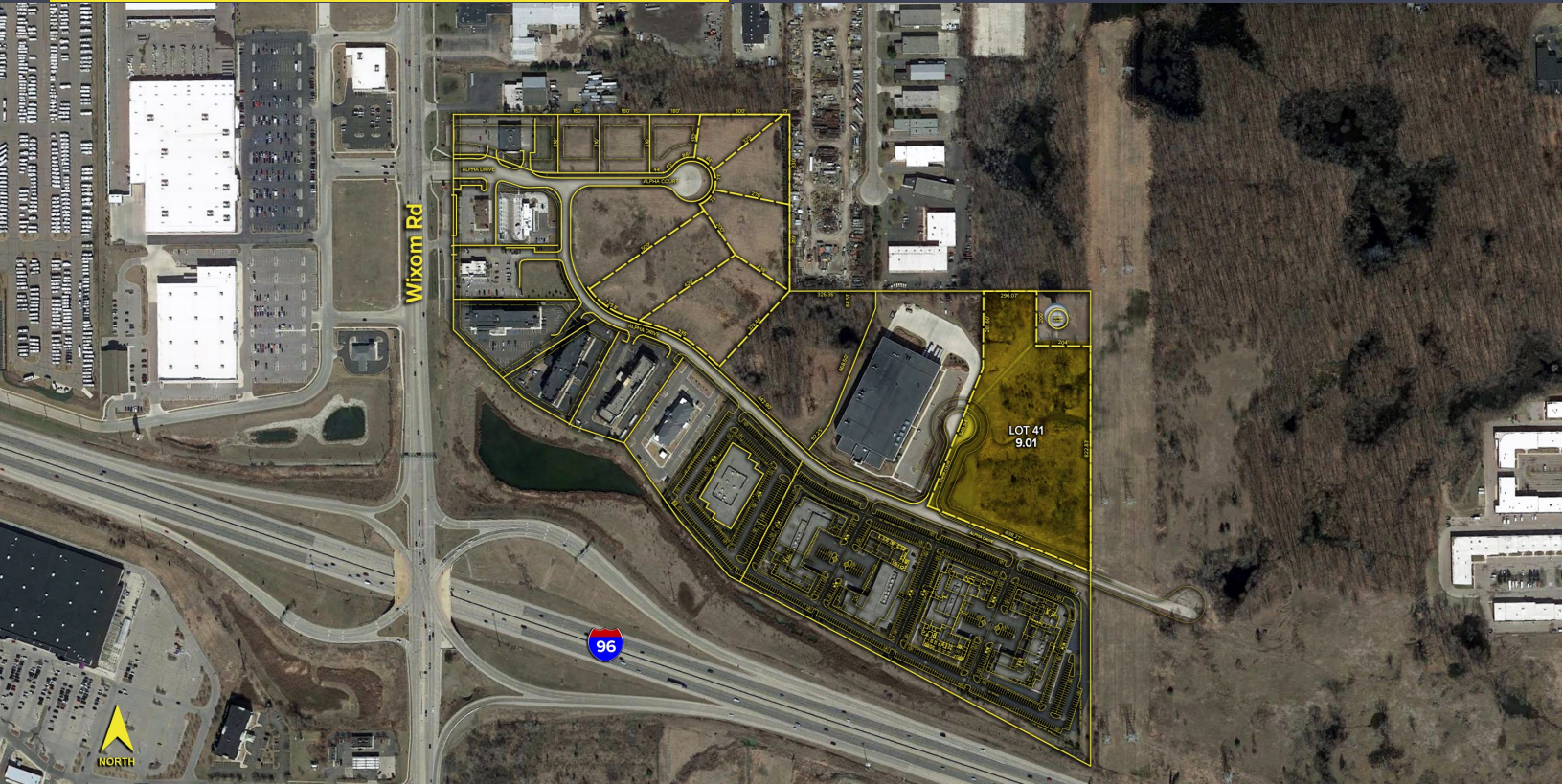
ALPHA DRIVE
WIXOM, MICHIGAN

LAND FOR SALE
9.01 Acres Available



**SIGNATURE
ASSOCIATES**
KNOW SIGNATURE | KNOW RESULTS

ALPHA TECH CORPORATE PARK



PROPERTY FEATURES

- 9 acres available (Lot #41)
- Zoned IRO
- Premier westside business park
- Fully developed and shovel ready
- Balanced and cleared with road and all utilities
- All due-diligence materials complete and available
- One of the last remaining fully developed lots in the area
- Sale price: \$300,000/acre



For more information, please contact:

JIM MONTGOMERY
(248) 359 0614
jmontgomery@signatureassociates.com

DAVE GREEN
(248) 948 4184
dgreen@signatureassociates.com

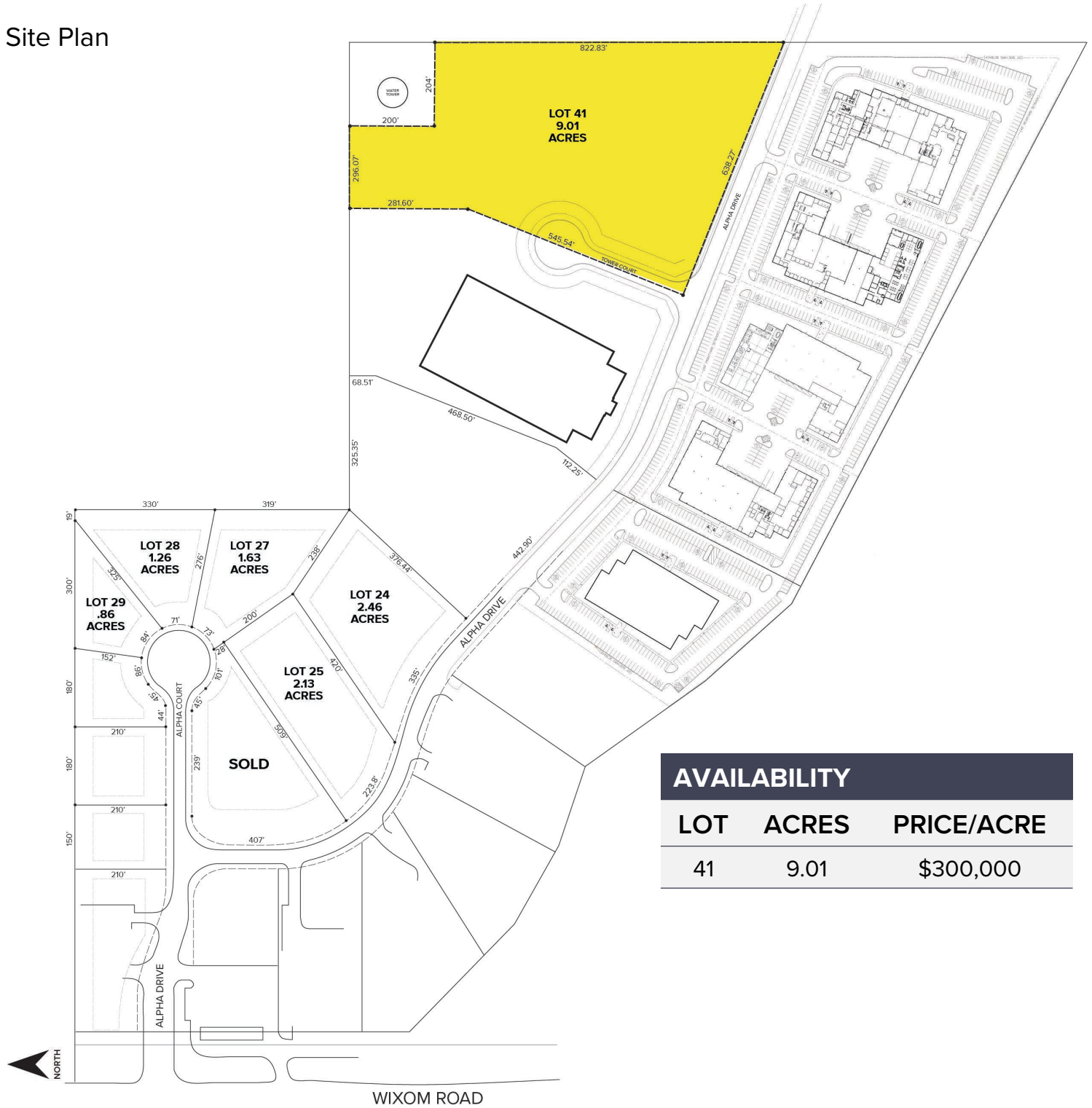
SIGNATURE ASSOCIATES
One Towne Square, Suite 1200
Southfield, MI 48076
www.signatureassociates.com

Alpha Drive – Wixom, Michigan

Land For Sale

9.01
Acres
AVAILABLE

Site Plan



AVAILABILITY		
LOT	ACRES	PRICE/ACRE
41	9.01	\$300,000

For more information, please contact:
JIM MONTGOMERY
 (248) 359 0614
jmontgomery@signatureassociates.com

DAVE GREEN
 (248) 948 4184
dgreen@signatureassociates.com

SIGNATURE ASSOCIATES
 One Towne Square, Suite 1200
 Southfield, MI 48076
www.signatureassociates.com

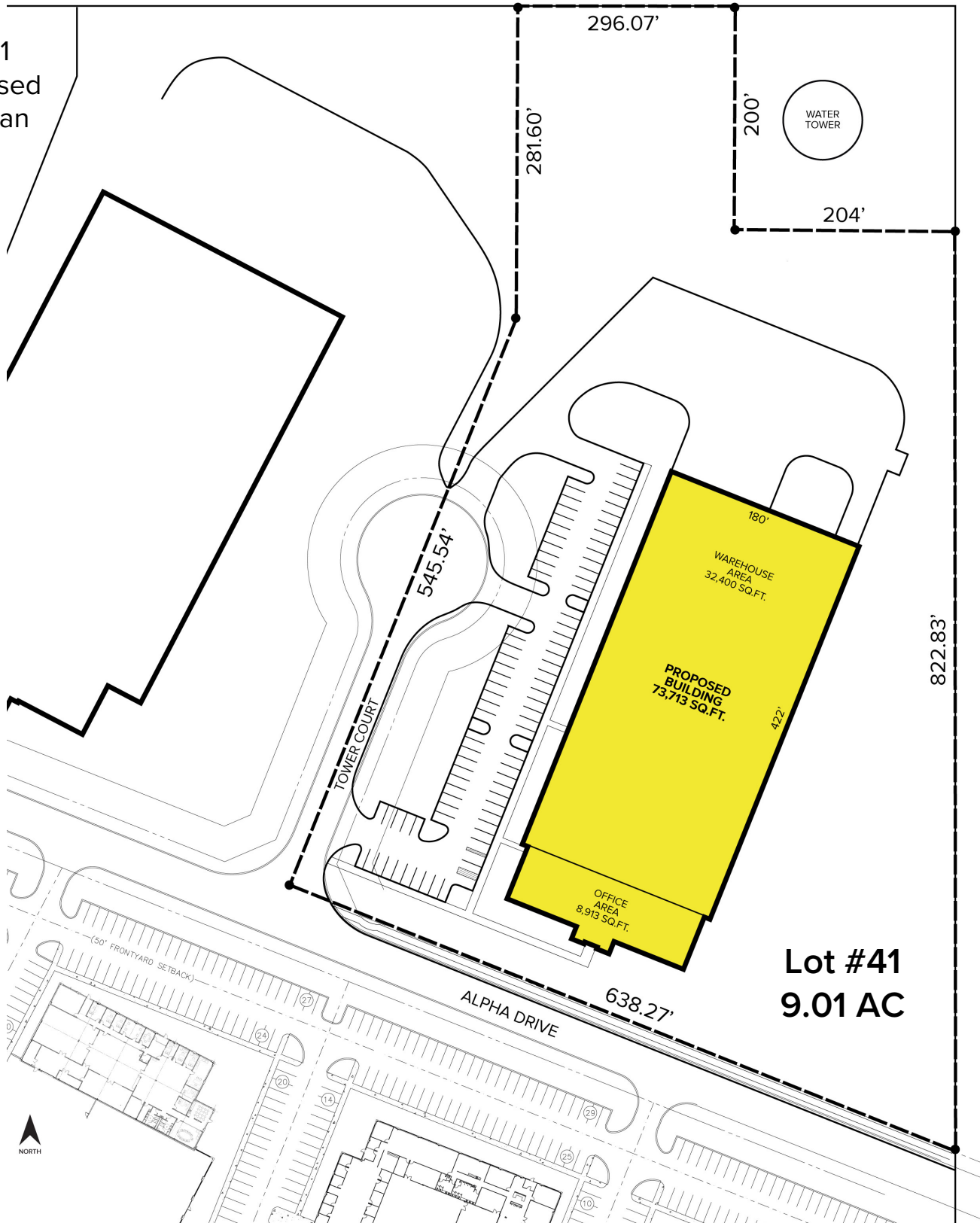
Information is subject to verification and no liability for errors or omissions is assumed. Price is subject to change and listing withdrawal.

Alpha Drive – Wixom, Michigan

Land For Sale

9.01
Acres
AVAILABLE

Lot #41
Proposed
Site Plan



For more information, please contact:

JIM MONTGOMERY

(248) 359 0614

jmontgomery@signatureassociates.com

DAVE GREEN

(248) 948 4184

dgreen@signatureassociates.com

SIGNATURE ASSOCIATES

One Towne Square, Suite 1200

Southfield, MI 48076

www.signatureassociates.com