

# FOR SALE

60 Directors Drive Greenville, SC 29615

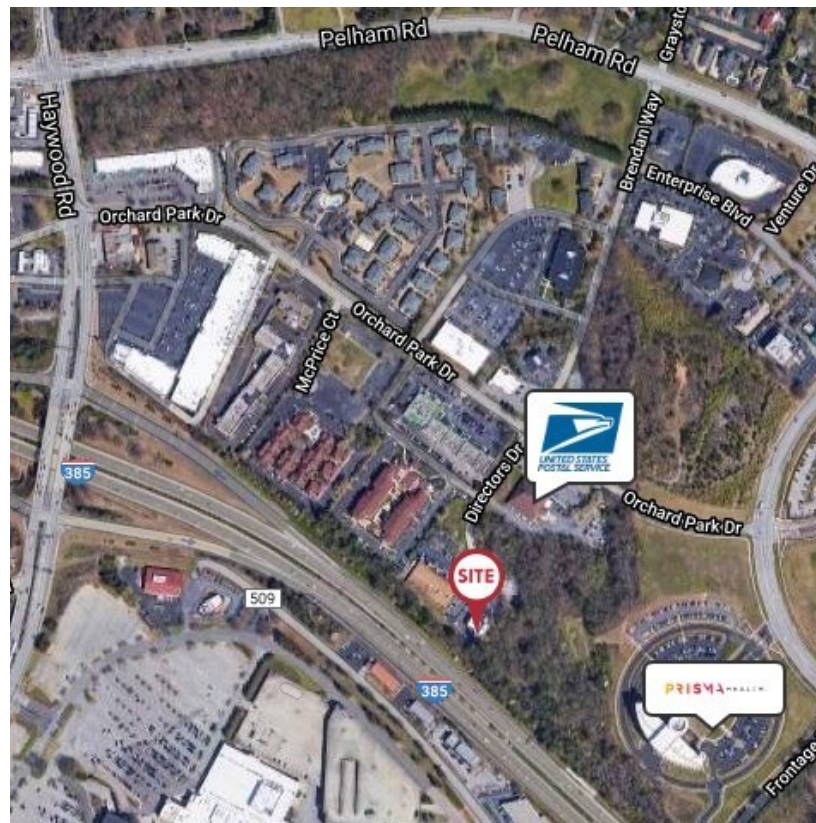


## Office | 4,840 SF

- Nicely renovated
- Single or two tenant building
- ±0.57 acres
- Parking ratio 6.5/1,000
- Back up generator on site
- Zoned: C-2 Greenville City
- Located off Orchard Park Drive with I-385 visibility
- Sale price: \$650,000

Demographics	1 Mile	3 Miles	5 Miles
Total Population:	6,196	56,060	145,495
Average HH Income:	\$57,174	\$66,995	\$69,996

No Warranty Or Representation, Express Or Implied, Is Made As To The Accuracy Of The Information Contained Herein, And The Same Is Submitted Subject To Errors, Omissions, Change Of Price, Rental Or Other Conditions, Prior Sale, Lease Or Financing, Or Withdrawal Without Notice, And Of Any Special Listing Conditions Imposed By Our Principals No Warranties Or Representations Are Made As To The Condition Of The Property Or Any Hazards Contained Therein Are Any To Be Implied.



✉ **Keith Jones, CCIM, SIOR**  
O: +1 864 232 9040  
C: +1 864 275 8699  
keith@naiearlefurman.com

✉ **McNeil Epps, CCIM**  
O: +1 864 232 9040 x5956  
C: +1 803 473 0179  
mepps@naiearlefurman.com

No Warranty Or Representation, Express Or Implied, Is Made As To The Accuracy Of The Information Contained Herein, And The Same Is Submitted Subject To Errors, Omissions, Change Of Price, Rental Or Other Conditions, Prior Sale, Lease Or Financing, Or Withdrawal Without Notice, And Of Any Special Listing Conditions Imposed By Our Principals No Warranties Or Representations Are Made As To The Condition Of The Property Or Any Hazards Contained Therein Are Any To Be Implied.

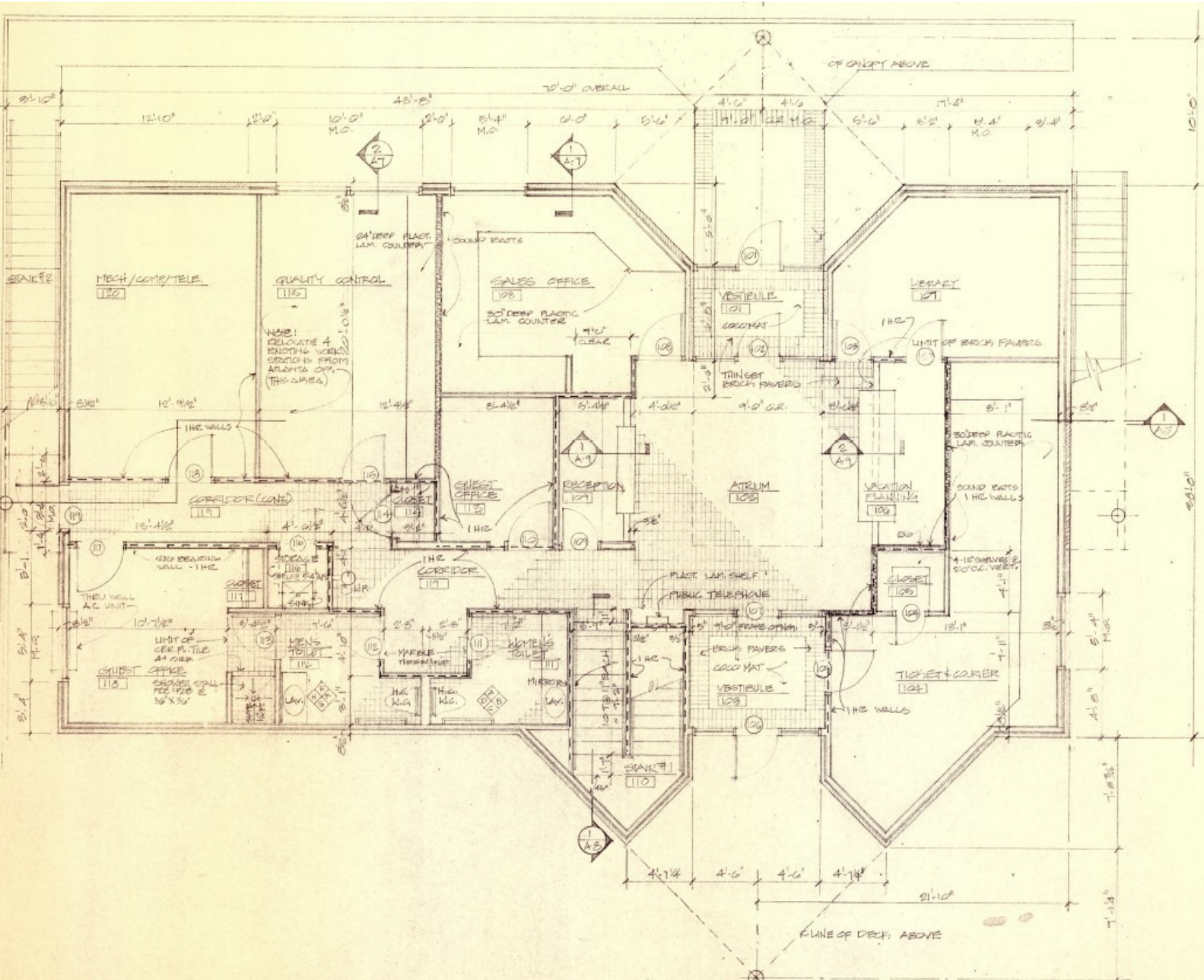
📍 **101 E Washington St**  
Greenville, SC 29601  
naiearlefurman.com



# FOR SALE

60 Directors Drive Greenville, SC 29615

## FIRST FLOOR



✓ Keith Jones, CCIM, SIOR  
O: +1 864 232 9040  
C: +1 864 275 8699  
keith@naearlefurman.com

✓ McNeil Epps, CCIM  
O: +1 864 232 9040 x5956  
C: +1 803 473 0179  
mepps@naearlefurman.com

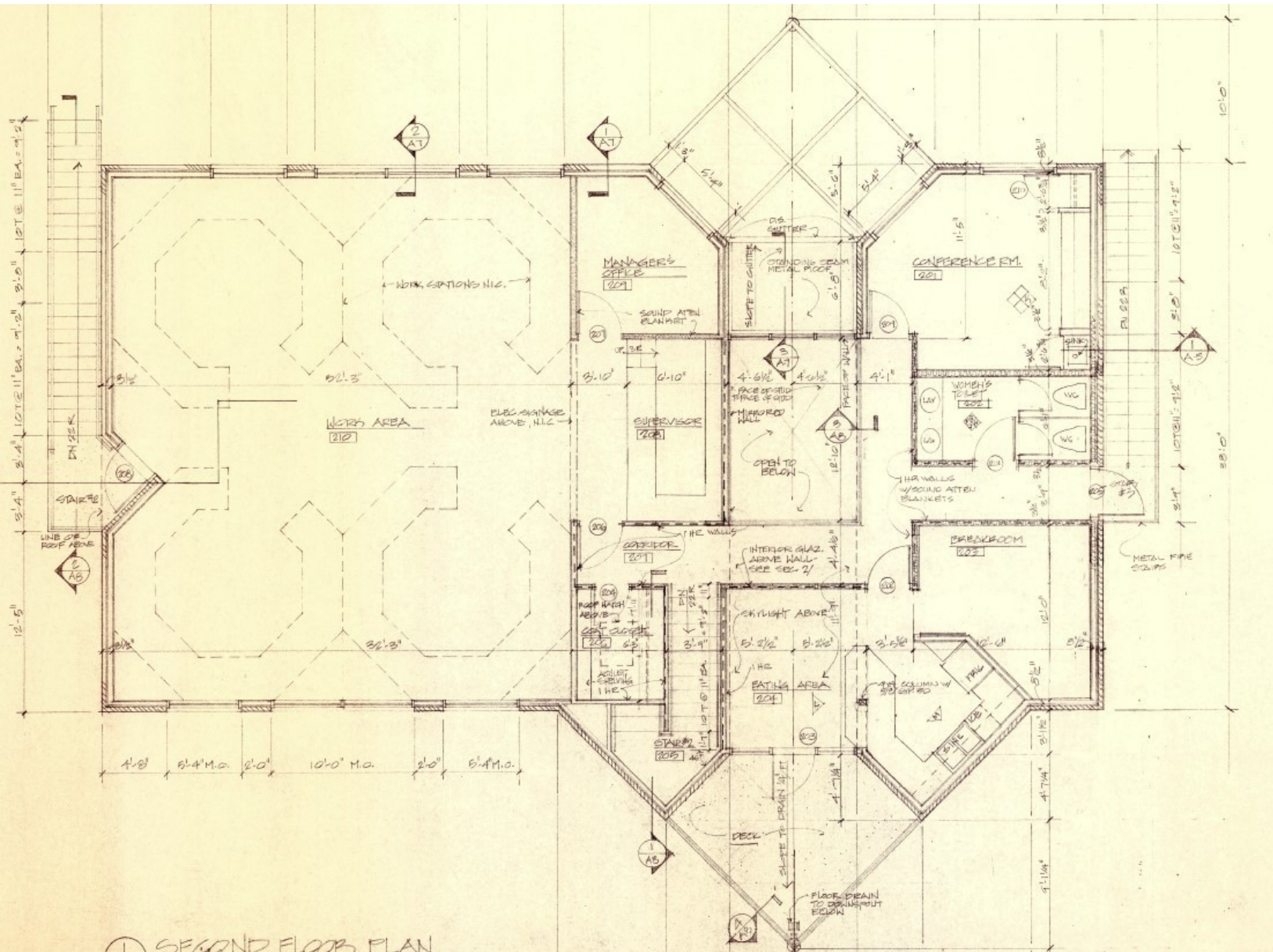
No Warranty Or Representation, Express Or Implied, Is Made As To The Accuracy Of The Information Contained Herein, And The Same Is Submitted Subject To Errors, Omissions, Change Of Price, Rental Or Other Conditions, Prior Sale, Lease Or Financing, Or Withdrawal Without Notice, And Of Any Special Listing Conditions Imposed By Our Principals. No Warranties Or Representations Are Made As To The Condition Of The Property Or Any Hazards Contained Therein As Any To Be Implied.

**NAI Earle Furman**

# FOR SALE

60 Directors Drive Greenville, SC 29615

## SECOND FLOOR



✓ Keith Jones, CCIM, SIOR  
O: +1 864 232 9040  
C: +1 864 275 8699  
keith@naearlefurman.com

✓ McNeil Epps, CCIM  
O: +1 864 232 9040 x5956  
C: +1 803 473 0179  
mepps@naearlefurman.com

No Warranty Or Representation, Express Or Implied, Is Made As To The Accuracy Of The Information Contained Herein, And The Same Is Submitted Subject To Errors, Omissions, Change Of Price, Rental Or Other Conditions, Prior Sale, Lease Or Financing, Or Withdrawal Without Notice, And Of Any Special Listing Conditions Imposed By Our Principals. No Warranties Or Representations Are Made As To The Condition Of The Property Or Any Hazards Contained Therein As Any To Be Implied.

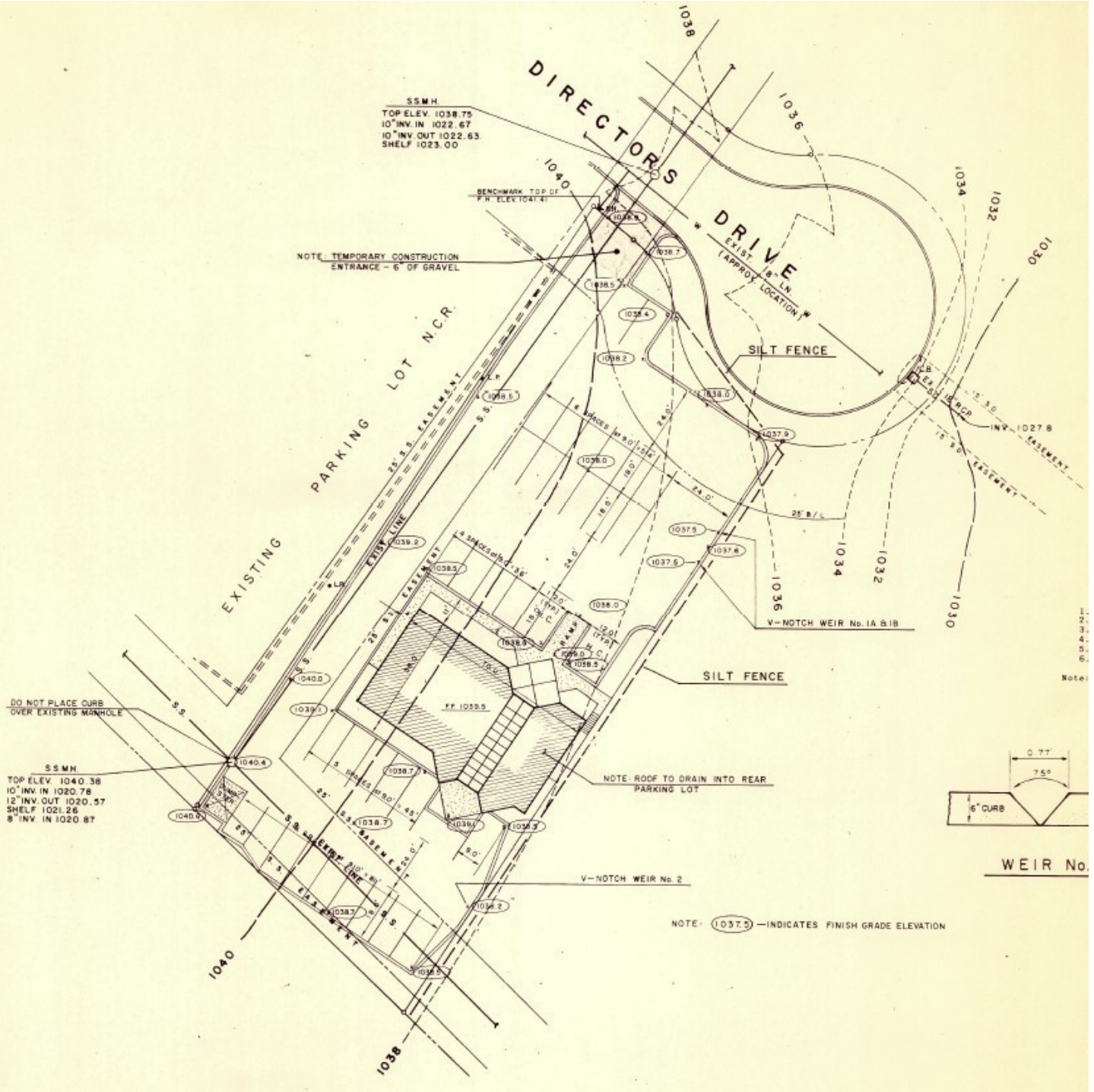
**NAI Earle Furman**



# FOR SALE

60 Directors Drive Greenville, SC 29615

## SITE PLAN



Keith Jones, CCIM, SIOR  
O: +1 864 232 9040  
C: +1 864 275 8699  
keith@naearlefurman.com

McNeil Epps, CCIM  
O: +1 864 232 9040 x5956  
C: +1 803 473 0179  
mepps@naearlefurman.com

No Warranty or Representation, Express or Implied, is Made as to the Accuracy of the Information Contained Herein, and the Same is Submitted Subject to Errors, Omissions, Change of Price, Rental or Other Conditions, Prior Sale, Lease or Financing, or Withdrawal Without Notice, and of Any Special Listing Conditions Imposed by Our Principals. No Warranties or Representations are Made as to the Condition of the Property or Any Hazards Contained Therein as Any to Be Implied.

**NAI Earle Furman**