

Available Medical Office Space for Lease

Verdugo Hills Professional Bldg I & II

1808 & 1818 Verdugo Boulevard, Glendale, CA 91208



For Leasing Information:

Leslie Price

Director, Leasing

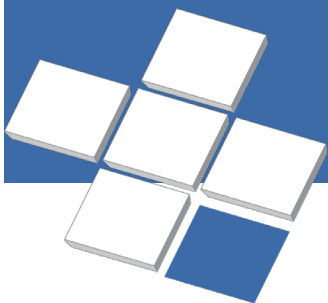
Phone: 858-794-1900

Lprice@pmbres.com

www.pmbres.com

CA Lic. 02131283

- Building 1: 64,000 SF Medical Office Building
- Building 2: 43,000 SF Medical Office Building
- Newly Upgraded Common Areas
- Adjacent to USC Verdugo Hills Hospital
- Free Parking



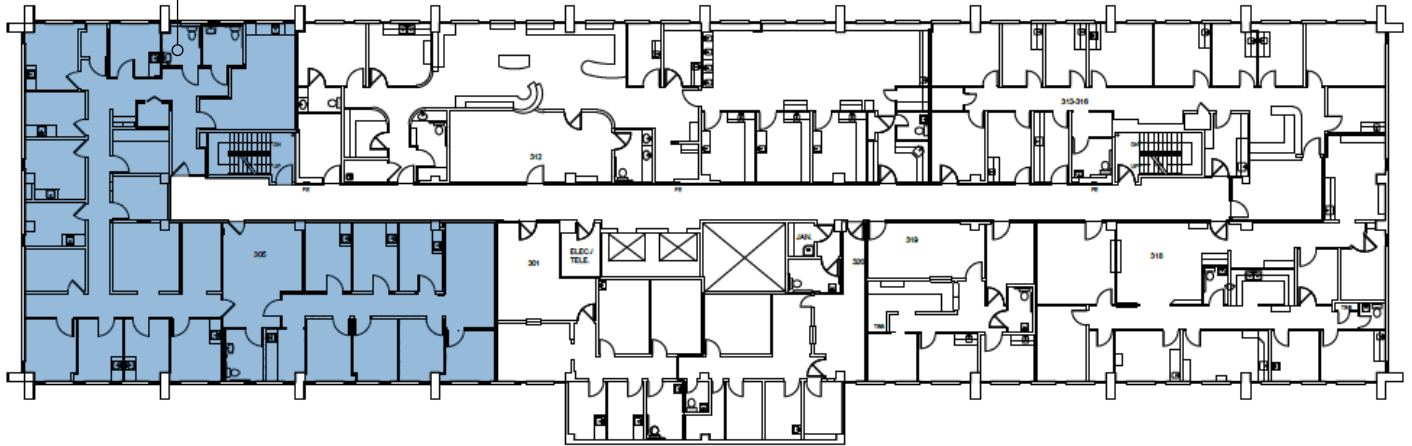
PMB
Real Estate Services
Real Estate Management Solutions for Healthcare



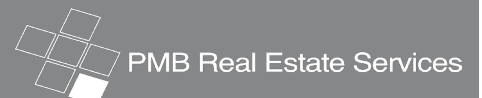
1808 Verdugo Boulevard

3rd Floor Availabilities

Suite 305
4,401 RSF
Available Q3 2024

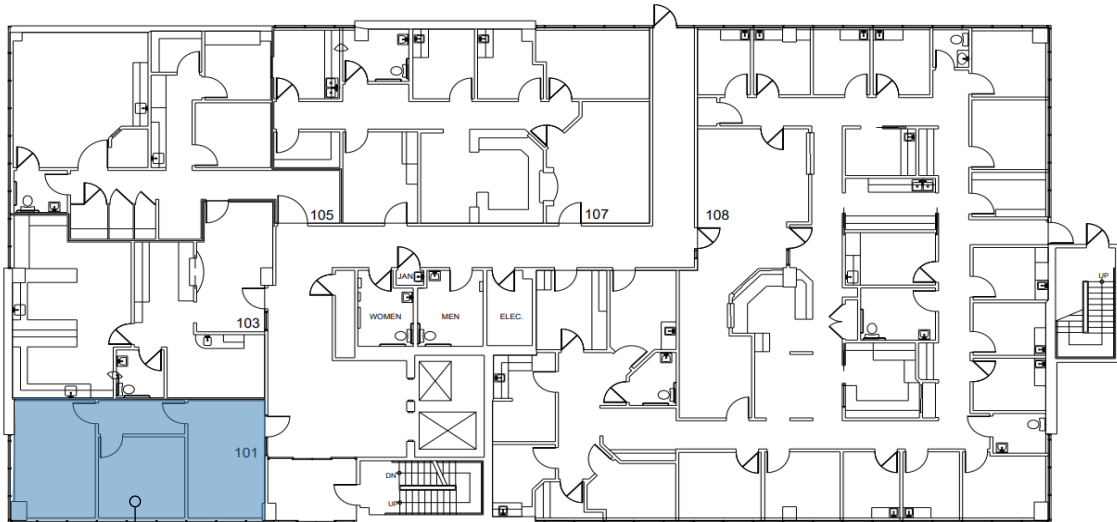


For Leasing Information:
Leslie Price | Director, Leasing
Phone: 858-794-1900 | Lprice@pmbres.com
www.pmbres.com | CA Lic. 02131283



1818 Verdugo Boulevard

1st Floor Availabilities



Suite 101
762 RSF

For Leasing Information:

Leslie Price | Director, Leasing
Phone: 858-794-1900 | Lprice@pmbres.com
www.pmbres.com | CA Lic. 02131283



PMB Real Estate Services