

**FOR LEASE**

26902 92nd Ave. NW  
Stanwood, WA 98292



**FIRST  
WESTERN  
PROPERTIES**

11621 97th Lane NE, Kirkland, WA 98034  
425.822.5522 | fwp-inc.com

# PORT SUSAN MARKETPLACE

Jake Thurber

© First Western Properties, Inc. **DISCLAIMER:**  
The above information has been secured  
from sources believed to be reliable, however,  
no representations are made to its accuracy.  
Prospective tenants or buyers should consult  
their professional advisors and conduct their  
own independent investigation. Properties  
are subject to change in price and/or  
availability without notice.

## AVAILABLE

4,855 SF - can be demised

\$26.00 PSF | \$3.84 PSF NNN

## FEATURES

- End cap and inline spaces available
- Pylon sign space available
- Excellent visibility with frontage on main intersection in Stanwood
- Ample parking
- Traffic counts at intersection: 19,801

## CO-TENANTS & NEIGHBORING TENANTS

- MOD Pizza
- Super Cuts
- ReMax
- QFC
- Grocery Outlet
- Petco
- Starbucks
- Papa Murphy's
- Auto Zone
- Jack in the Box
- UPS

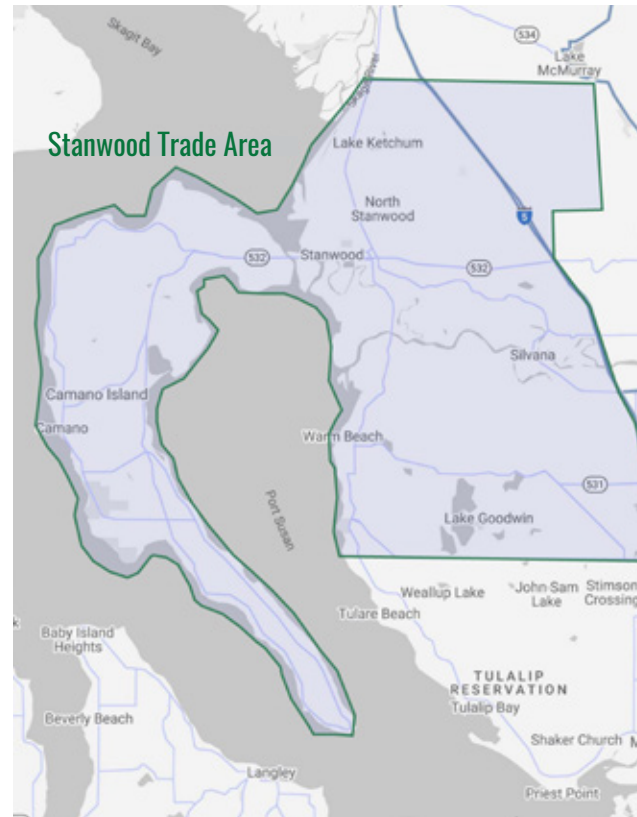
## CONTACT

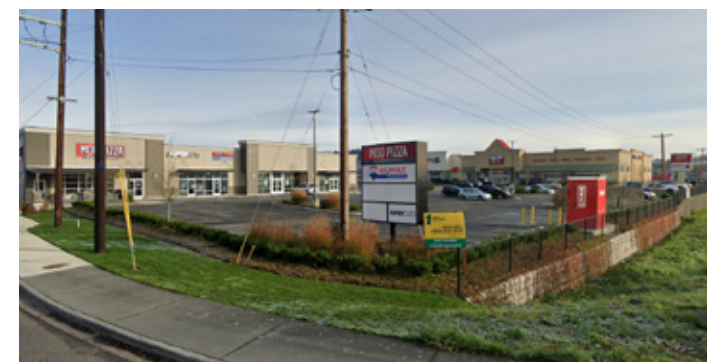
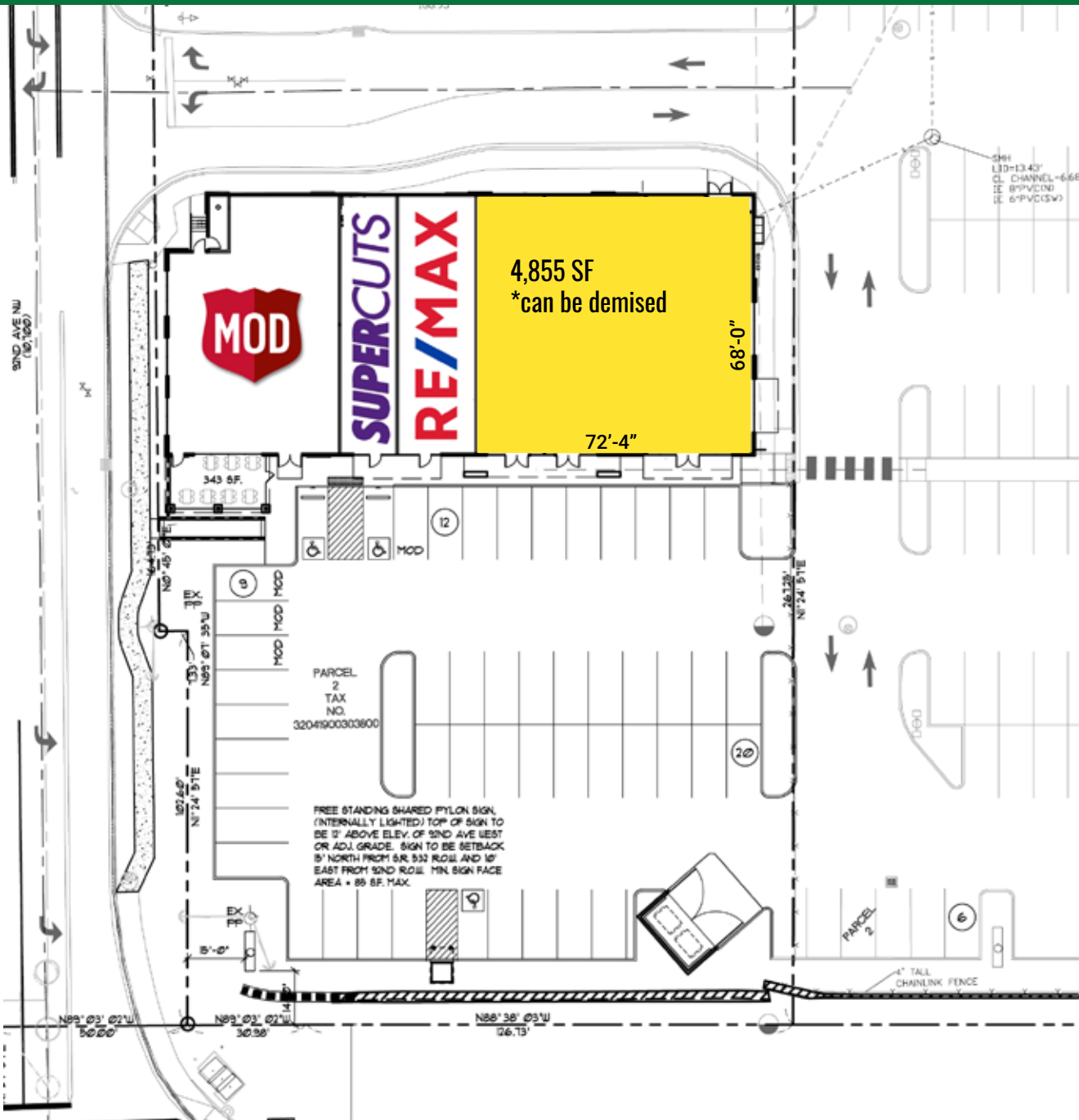


Jake Thurber  
425-250-3277  
jthurber@fwp-inc.com

## TRADE AREA DEMOGRAPHICS

Population 55,498  
Average HH Income \$111,951  
Daytime Population 10,710  
Regis - 2022







**SITE**