



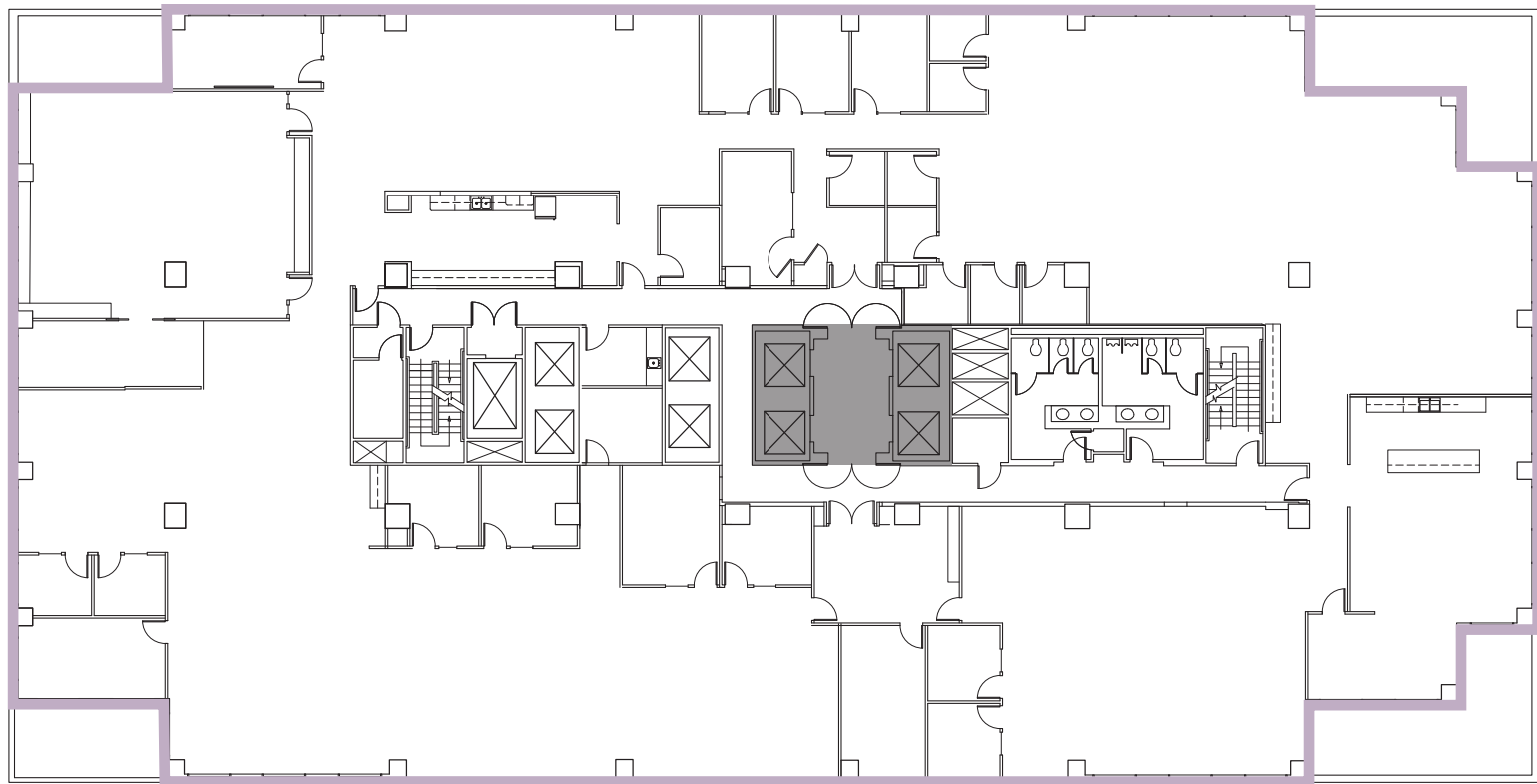
BELLEVUE PLACE BUILDING
10500 NE 8th Street
Bellevue, WA

BELLEVUE PLACE BUILDING

4th Floor • **Suite 400** • 20,350 RSF

SPACE FEATURES

- Available 4/1/2024
- Full floor availability
- Mixture of meeting rooms, private offices and open area



For more information or to schedule a tour, please contact:

PAUL SWEENEY
425.646.5225
sweeney@broderickgroup.com

JIM KINERK
425.646.5221
kinerk@broderickgroup.com

CLAYTON HOLM
425.274.4287
holm@broderickgroup.com

The information contained herein has been given to us by the owner or sources which we deem reliable. We have no reason to doubt its accuracy, but we do not guarantee it. Prospective tenants should carefully verify all information contained herein.

 [BACK TO AVAILABLE SPACE](#)



NORTH