

132

GREENE STREET

Between Prince & West Houston



DETAILS :

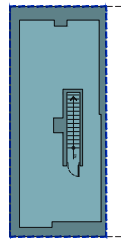
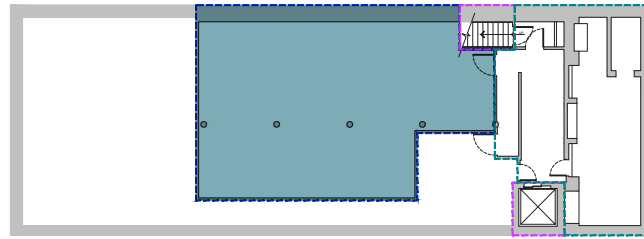
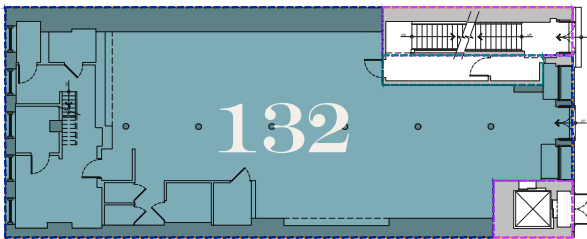
Ground Level.....**3,042 SF**
Lower Level.....**1,398 SF**
Mezzanine.....**601 SF**
Frontage.....**22' 6"**
Ceiling Height.....**16' 6"**
Term.....**Negotiable**
Possession...**August 1, 2020**
Asking Rent...**Please Inquire**



GROUND LEVEL

LOWER LEVEL

MEZZ



NOTES :

- Fully ADA compliant
- Use Group 6, legal retail use
- Separate loading entrance
- High-end finishes
- Turn key condition
- Classic Soho cast-iron facade and columns
- 2 large display windows and prominent frontage
- Elevator to lower level

STREET

- BIRCH •
- ligneroset •
- Cassina •
- STEPEVI •
- THE NORTH FACE •
- DF •
- FRED PERRY •
- FAHERTY •
- UNTUCKIT •

HOUSTON STREET

- bulthaup •
- TERRAIN GALLERY •
- CAPPELLINI •
- POMEGRANATE GALLERY •
- DIOR HOMME •
- FLOR •
- BURROW •
- WARBY PARKER •
- MANSUR GAVRIEL •
- PROENZA SCHOUER •
- UNO 50 •
- SCHUTZ •
- SCANNAN THEODORE •
- sandro •
- RAUL LAUREN •
- VAN LEEUWEN •

HOUSTON STREET

- FLOS •
- 260 •
- SAMPLE SALE •
- MOROSO •
- MARC JACOBS •
- Paul Smith •
- MARNI •
- poggen pohl •
- DOLCE & GABBANA •
- ZADIG & VOLTAIRE •
- BRUNELLO CUCINELLI •
- 132 •
- YORY BURCH •
- BALENCIAGA •
- SHINOLA •
- MONCLER (SOON) •
- THE MERCER HOTEL •
- VERSANI •
- 45 RPM •

HOUSTON STREET

- AMERICAN EAGLE OUTLET •
- Keurum Coe •
- VERSACE •
- Carine Roitfeld •
- VERSANI •
- BB •
- BALENCIAGA •
- & other Stories •
- MERCER STREET
- PRADA •

STREET

- PREVIEW •
- COLE HAAN •
- Barbour •
- WOOLRICH •
- TED BAKER •
- CANADA GOOSE •
- VICTORINOX •
- OSKLEN •
- LUANA ITALY •
- opm •
- MONICA VINADER •
- LF •
- GERARD DAREL •
- ONE KINGS LANE •

PRINCE STREET

- PLAIS PLAIS •
- NAS •
- Seje •
- JOHN HARDY •
- SLOWEAR •
- DAVID YURMAN •
- CAMPER •
- DOA •
- JIMMY CHOO •
- LINDA FARROW •
- DIOR HOMME •
- Dior •
- SONOS •
- EQUIPMENT •
- FENDI •
- TIFFANY & Co. •
- TIFFANY & Co. •
- REDEMPTION •
- HERNO •
- BALMAIN •
- Chloe •
- BAPE •
- CHANEL •
- DIESEL •
- BURBERRY •
- COS •
- ETRO •

PRINCE STREET

- LV •
- TUMI •
- Miu Miu •
- INTERMIX •
- FANELI CAFE •
- LV •
- Agent Provocateur •
- A.P.C. •
- STELLA MCCARTNEY •
- JOURNELLE •
- DESIGN WITHIN REACH •
- rag & bone •
- MCM •
- The Kooples •
- DEREK LAM 10 CROSBY •
- GEORGETOWN CUPCAKE •
- REEBOK •
- DE VIALET •
- Y-3 •
- VIVIENNE HU •
- adidas •
- FRYE •
- SAV EDELMAN •
- SPRENDID •
- SOLSTICE •
- MONCLER •
- HUGO •
- LOLÉ •
- CUTLER AND GROSS •
- NESPRESSO •

PRINCE STREET

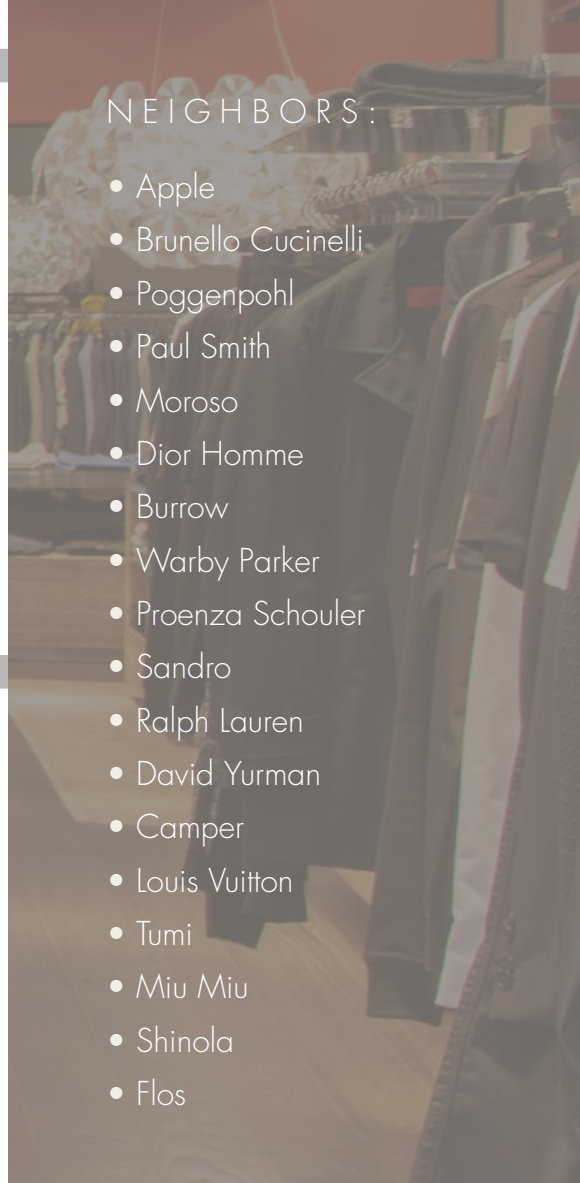
- PREVIEW •
- COLE HAAN •
- Barbour •
- WOOLRICH •
- TED BAKER •
- CANADA GOOSE •
- VICTORINOX •
- OSKLEN •
- LUANA ITALY •
- opm •
- MONICA VINADER •
- LF •
- GERARD DAREL •
- ONE KINGS LANE •

STREET

SPRING STREET

SPRING STREET

SPRING STREET



NEIGHBORS:

- Apple
- Brunello Cucinelli
- Poggenpohl
- Paul Smith
- Moroso
- Dior Homme
- Burrow
- Warby Parker
- Proenza Schouler
- Sandro
- Ralph Lauren
- David Yurman
- Camper
- Louis Vuitton
- Tumi
- Miu Miu
- Shinola
- Flos

PLEASE CONTACT:

Christopher Owles
212.604.9002
chris@sinvin.com

Michael Glanzberg
212.604.9004
michael@sinvin.com

Margie Sarway
646.673.8742
margie@sinvin.com

