

OFFICE SPACE FOR LEASE

14205 SE 36TH ST | BELLEVUE, WA 98006

14205 Building



CONTACT

Sam Ziemba
+1 425 974 4005
sam.ziemba@am.jll.com

Jake Bos
+1 425 974 4086
jake.bos@am.jll.com



DISCLAIMER © 2020 Jones Lang LaSalle IP, Inc. All rights reserved. All information contained herein is from sources deemed reliable; however, no representation or warranty is made to the accuracy thereof.

Available space

- + Suite 325: 5,976 RSF (available 12/1/2020)
- + Suite 214: 2,832 RSF (available immediately)

Building features

- + Excellent access to I-90
- + Abundant natural light
- + On-site showers & lockers
- + Conferencing facility
- + Four parking stalls per 1,000 RSF (half covered at \$50/stall/month)
- + 2020 Triple Net estimate: \$12.58/RSF/year
- + Internet provided by Century Link & TW Telecom
- + Professional on-site and responsive property management



Interior and exterior renovation coming soon!

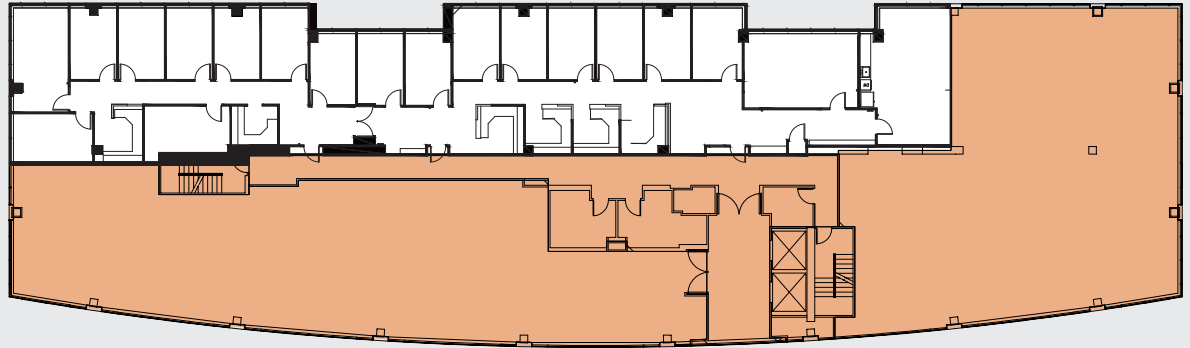
Suite 214

- + Built in workstations included



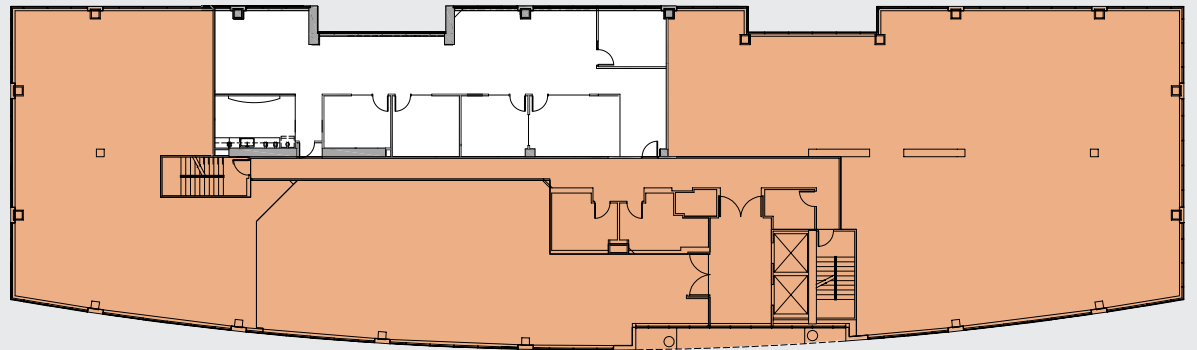
Suite 325

- + 5,976 RSF (available 12/1/2020)



Suite 214

- + 2,832 RSF (available immediately)



 LEASED  AVAILABLE



CONTACT

Sam Ziemba
+1 425 974 4005
sam.ziemba@am.jll.com

Jake Bos
+1 425 974 4086
jake.bos@am.jll.com

