

10020

DE ANZA BOULEVARD

±3,324 SF FOR LEASE

ERIK HALLGRIMSON

Vice Chairman
+1 408 615 3435
erik.hallgrimson@cushwake.com
LIC #01274540

MARYANNA MCSWAIN

Senior Director
+1 408 615 3446
maryanna.mcswain@cushwake.com
LIC #00696583

CLARK STEELE

Senior Associate
+1 408 436 3653
clark.steele@cushwake.com
LIC #01995379

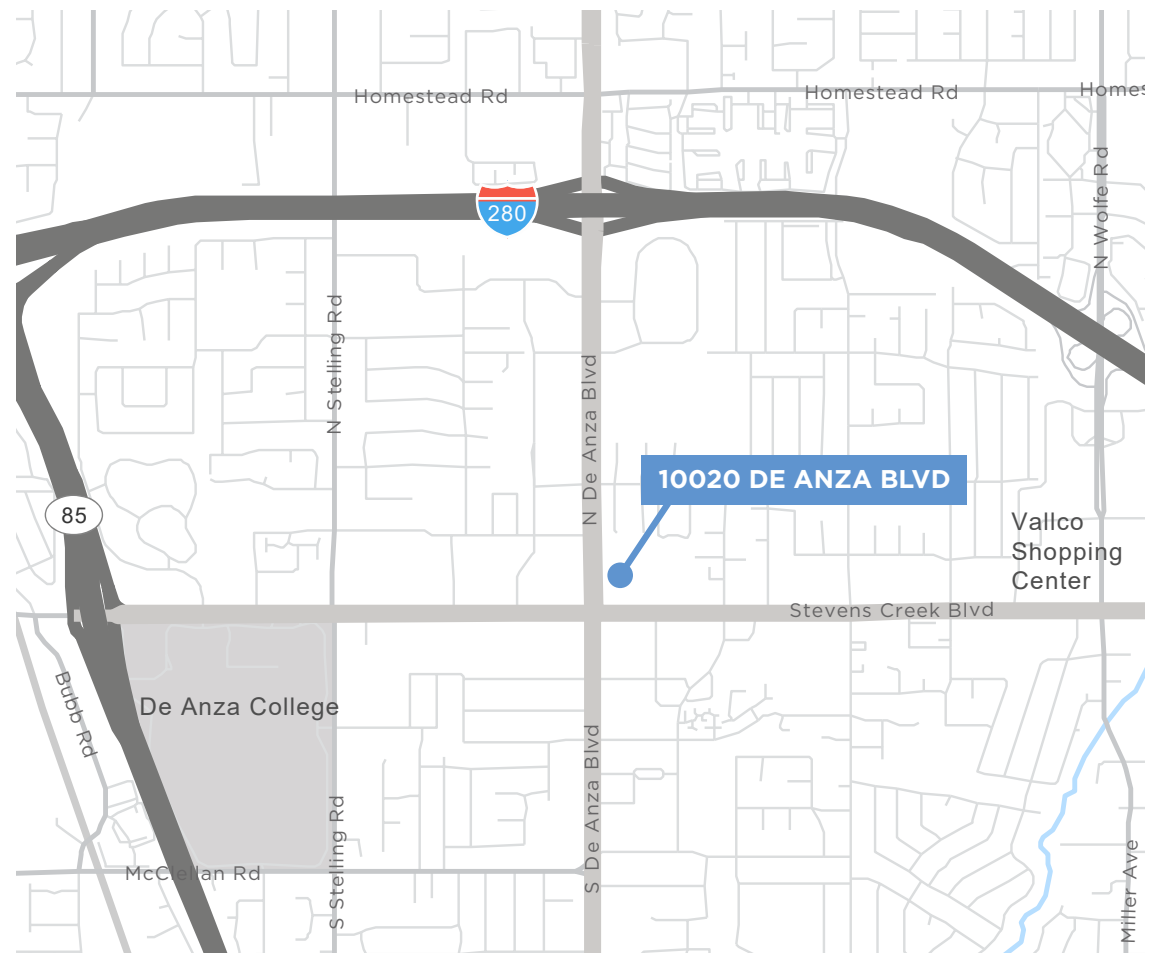
[View Site Specific COVID-19 Prevention Plan](#)

©2020 Cushman & Wakefield. NO WARRANTY OR REPRESENTATION, EXPRESS OR IMPLIED, IS MADE TO THE ACCURACY OR COMPLETENESS OF THE INFORMATION CONTAINED HEREIN, AND SAME IS SUBMITTED SUBJECT TO ERRORS, OMISSIONS, CHANGE OF PRICE, RENTAL OR OTHER CONDITIONS, WITHDRAWAL WITHOUT NOTICE, AND TO ANY SPECIAL LISTING CONDITIONS IMPOSED BY THE PROPERTY OWNER(S), AS APPLICABLE, WE MAKE NO REPRESENTATION AS TO THE CONDITION OF THE PROPERTY (OR PROPERTIES) IN QUESTION.

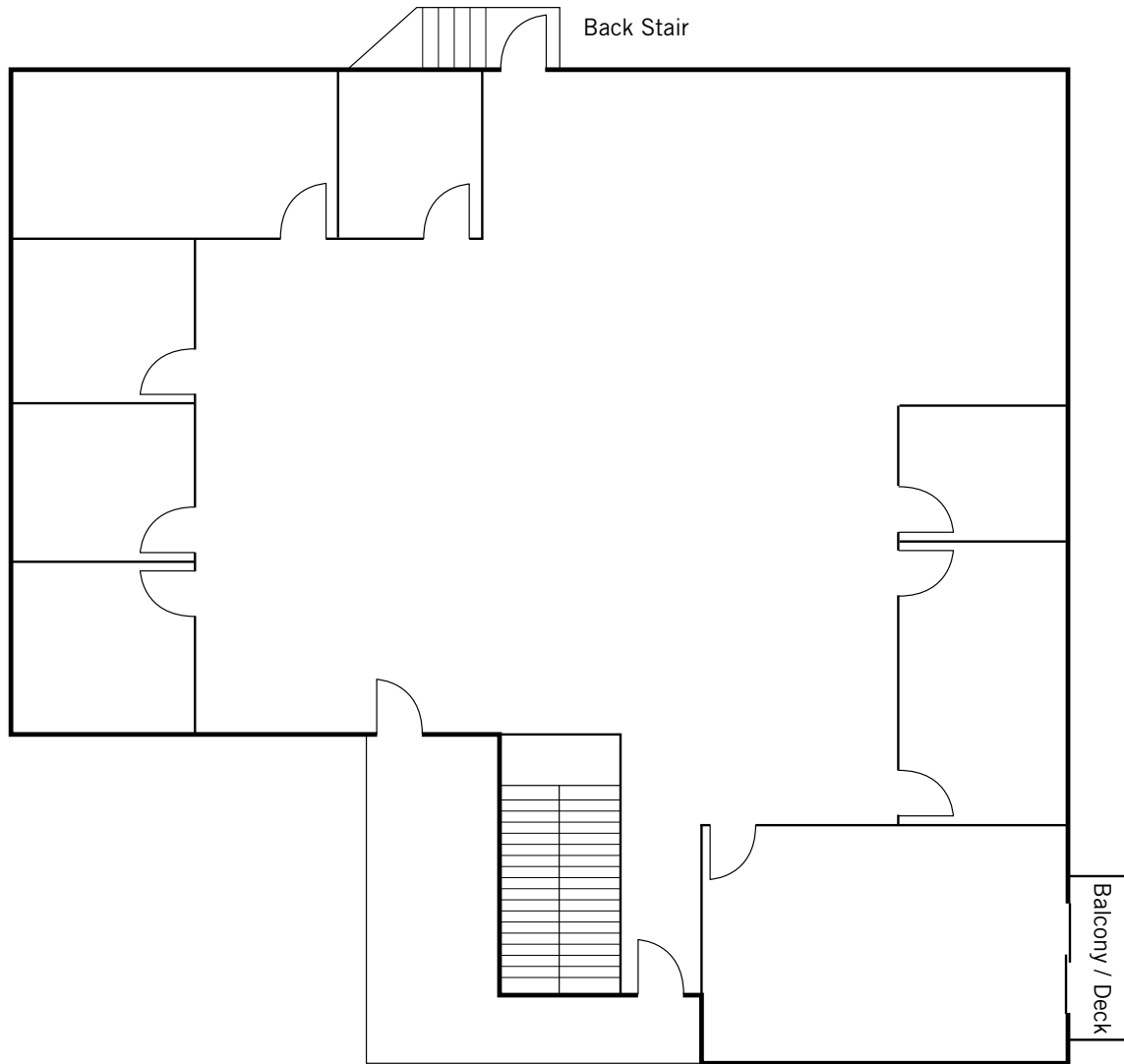


PROPERTY HIGHLIGHTS

- Strategically located at corner of Stevens Creek and De Anza Blvd.
- Monument signage on De Anza Boulevard
- Easy access to Highways 280 & 85
- Numerous amenities nearby
- 3.3/1,000 parking
- Available Now



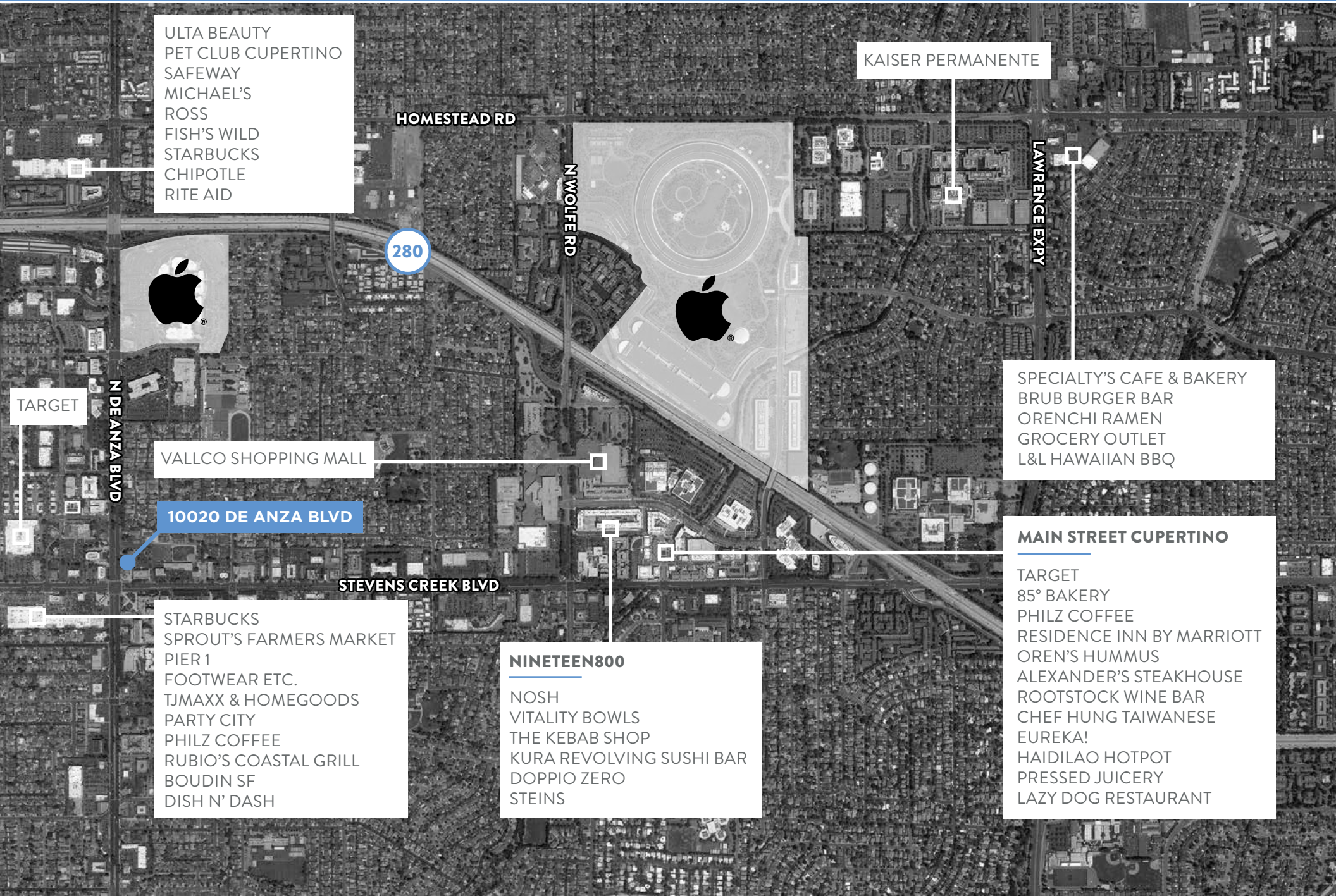
FLOOR PLAN



NEW MONUMENT SIGN



10020 DE ANZA BOULEVARD



ULTA BEAUTY
PET CLUB CUPERTINO
SAFWAY
MICHAEL'S
ROSS
FISH'S WILD
STARBUCKS
CHIPOTLE
RITE AID

KAISER PERMANENTE

HOMESTEAD RD

N WOLFE RD

LAWRENCE EXPY

288



TARGET

N DE ANZA BLVD

VALLCO SHOPPING MALL

10020 DE ANZA BLVD

SPECIALTY'S CAFE & BAKERY
BRUB BURGER BAR
ORENCHI RAMEN
GROCERY OUTLET
L&L HAWAIIAN BBQ

STEVENS CREEK BLVD

STARBUCKS
SPROUT'S FARMERS MARKET
PIER 1
FOOTWEAR ETC.
TJMAXX & HOMEGOODS
PARTY CITY
PHILZ COFFEE
RUBIO'S COASTAL GRILL
BOUDIN SF
DISH N' DASH

NINETEEN800
NOSH
VITALITY BOWLS
THE KEBAB SHOP
KURA REVOLVING SUSHI BAR
DOPPIO ZERO
STEINS

MAIN STREET CUPERTINO
TARGET
85° BAKERY
PHILZ COFFEE
RESIDENCE INN BY MARRIOTT
OREN'S HUMMUS
ALEXANDER'S STEAKHOUSE
ROOTSTOCK WINE BAR
CHEF HUNG TAIWANESE
EUREKA!
HAIDILAO HOTPOT
PRESSED JUICERY
LAZY DOG RESTAURANT