

OFFICE BUILDING FOR SALE

- 6,274 SF Office Space
- In heart of Historic Downtown Longwood
- Possible Owner User Opportunity
- Possible Investment Opportunity
- Individual Office Suites
- Can be demised into Multi-Tenant
- 25 Parking Spaces
- Located Across the Street from Orlando Health Longwood Hospital
- **Asking Price: \$899,000**



DEMOGRAPHICS:

POPULATION

1 miles	7,898
3 miles	72,379
5 miles	199,237

AVERAGE HH INCOME

1 miles	\$64,429
3 miles	\$72,362
5 miles	\$81,922

DAYTIME BUSINESS POPULATION

1 miles	11,035
3 miles	41,497
5 miles	95,491

TRAFFIC COUNTS

On West State Road 434:
± 41,737 vehicles/day



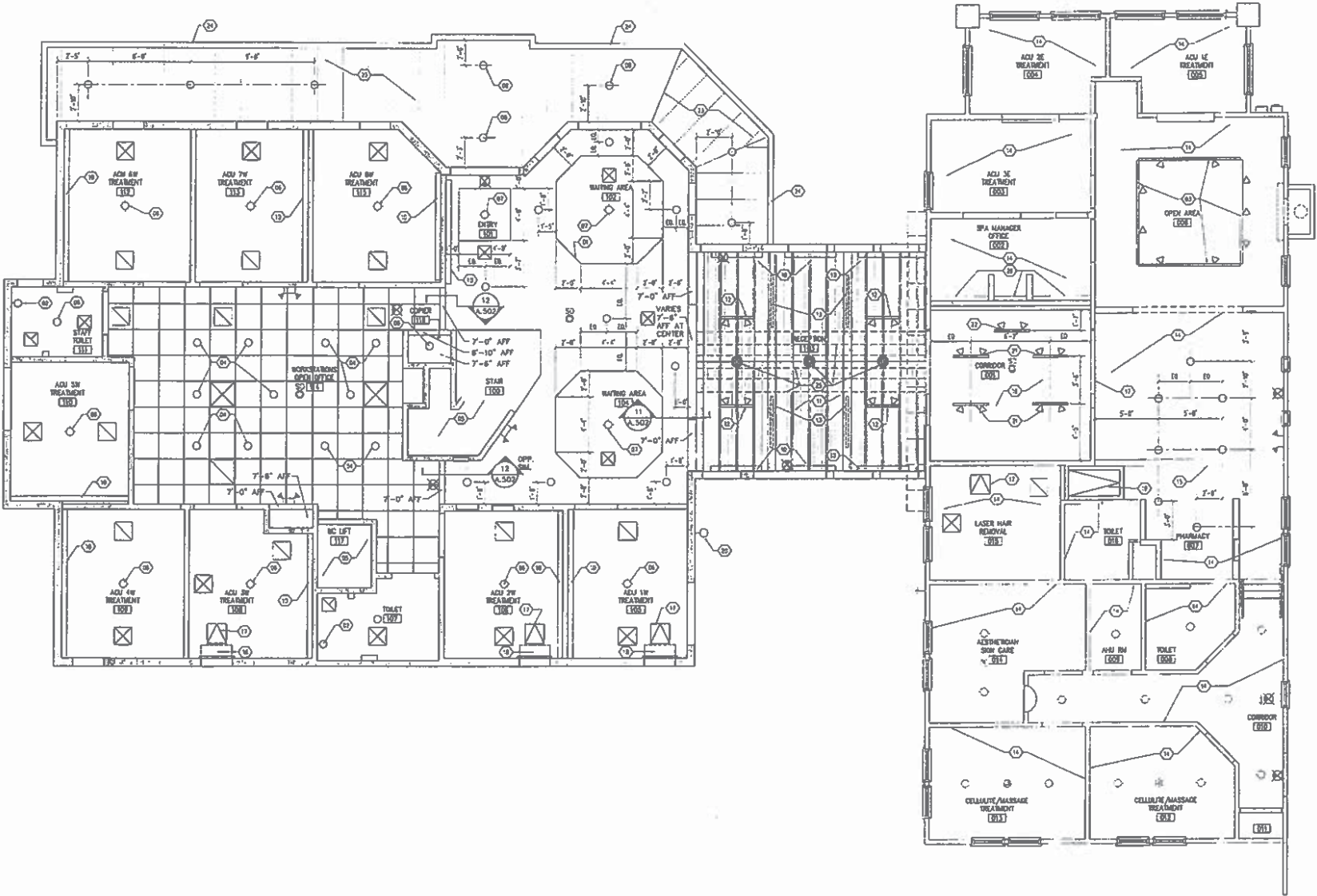
The information contained herein has been obtained from sources deemed reliable, however, HRS makes no guarantees, warranties or representation as to its completeness or accuracy thereof. The presentation of this property is submitted subject to errors, omissions, change of price or conditions, prior to sale or lease or withdrawal without notice.

Justin Walker
jwalker@harbertrealty.com
407.377.4042

2450 Maitland Center Pkwy
Suite 200
Maitland, FL 32751

HarbertRealty.com
407.377.4050





First Floor

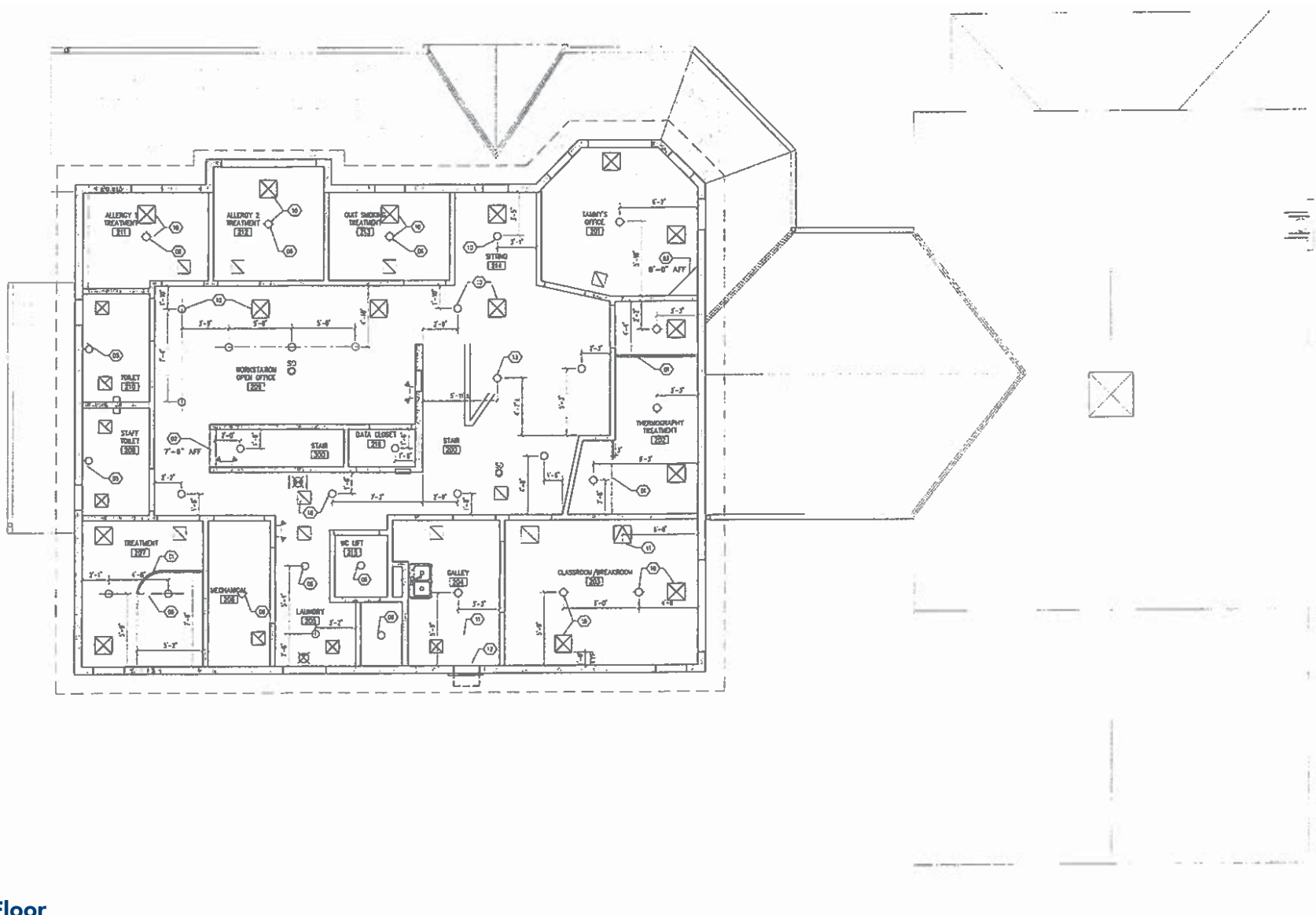


The information contained herein has been obtained from sources deemed reliable, however, HRS makes no guarantees, warranties or representation as to its completeness or accuracy thereof. The presentation of this property is submitted subject to errors, omissions, change of price or conditions, prior to sale or lease or withdrawal without notice.

Justin Walker
 jwalker@harbertrealty.com
 407.377.4042

2450 Maitland Center Pkwy
 Suite 200
 Maitland, FL 32751

HarbertRealty.com
 407.377.4050



Second Floor

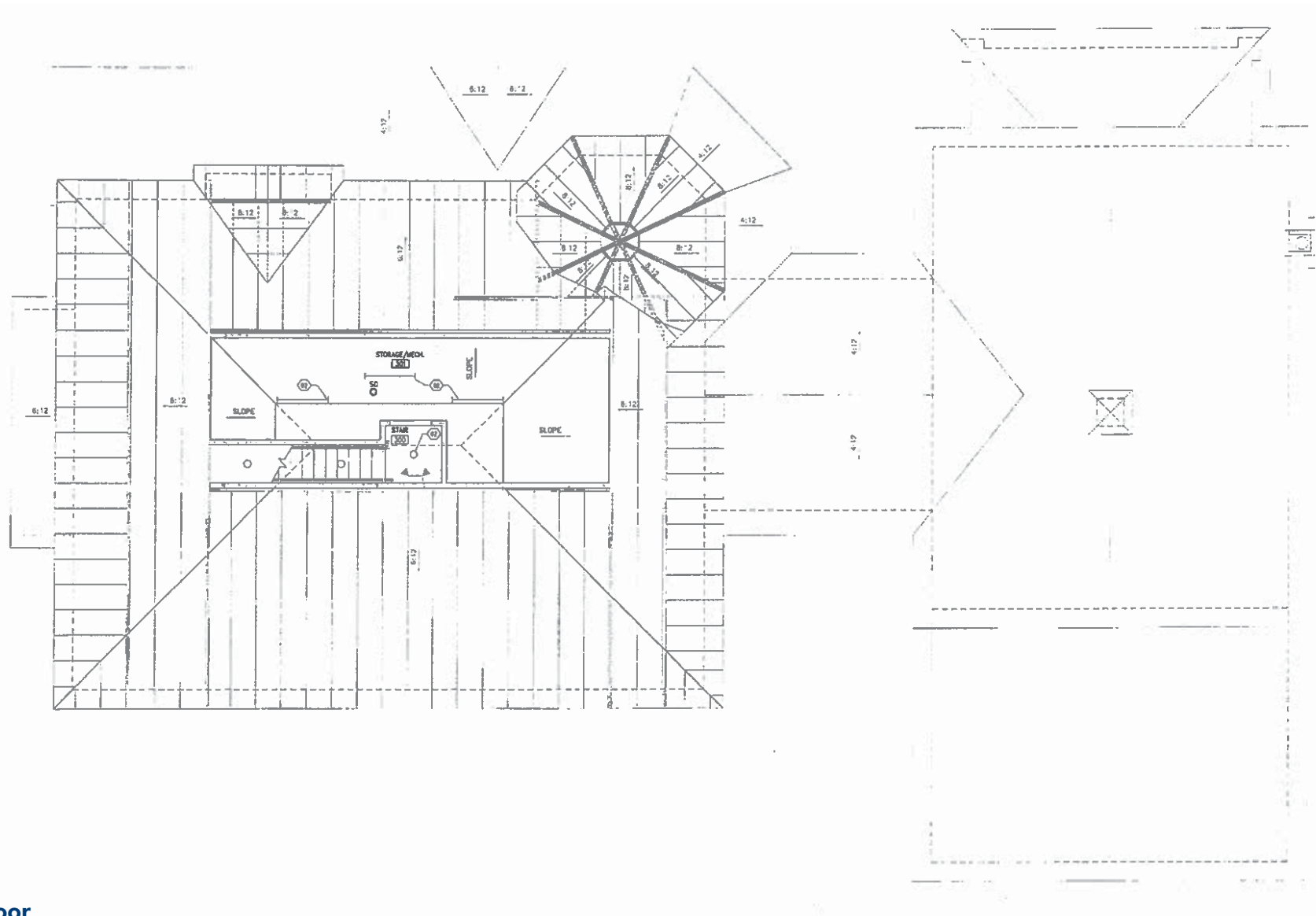


The information contained herein has been obtained from sources deemed reliable, however, HRS makes no guarantees, warranties or representation as to its completeness or accuracy thereof. The presentation of this property is submitted subject to errors, omissions, change of price or conditions, prior to sale or lease or withdrawal without notice.

Justin Walker
jwalker@harbertrealty.com
407.377.4042

2450 Maitland Center Pkwy
Suite 200
Maitland, FL 32751

HarbertRealty.com
407.377.4050



Third Floor



The information contained herein has been obtained from sources deemed reliable, however, HRS makes no guarantees, warranties or representation as to its completeness or accuracy thereof. The presentation of this property is submitted subject to errors, omissions, change of price or conditions, prior to sale or lease or withdrawal without notice.

Justin Walker
jwalker@harbertrealty.com
407.377.4042

2450 Maitland Center Pkwy
Suite 200
Maitland, FL 32751

HarbertRealty.com
407.377.4050