



BELLEVUE PLACE

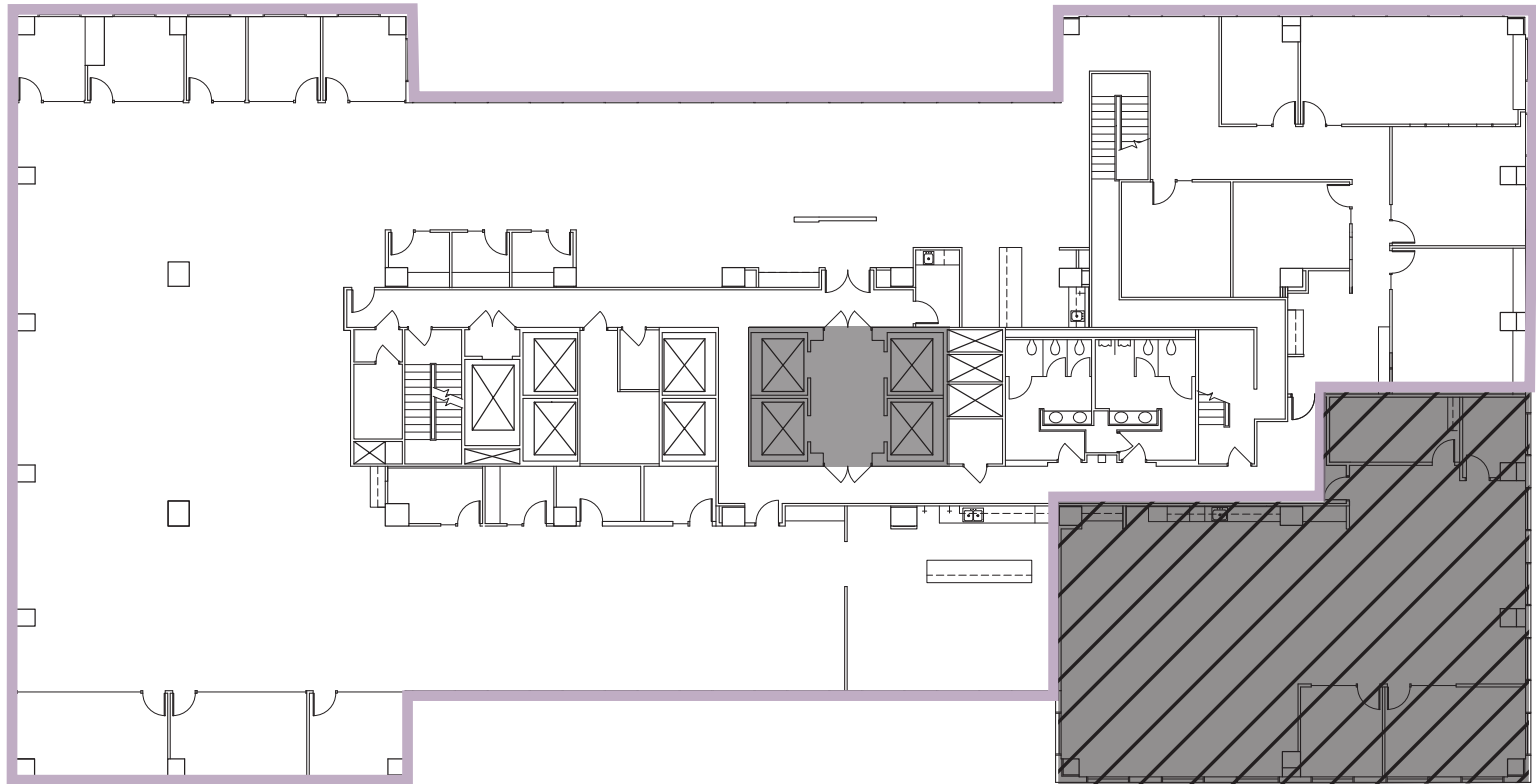
BELLEVUE PLACE BUILDING
10500 NE 8th Street
Bellevue, WA

BELLEVUE PLACE BUILDING

3rd Floor • **Suite 300** • 15,940 RSF

SPACE FEATURES

- Available 4/1/2024
- Renovated break area
- Balance of open area and private offices



BRODERICK
• GROUP •

For more information or to schedule a tour, please contact:

PAUL SWEENEY
425.646.5225
sweeney@broderickgroup.com

JIM KINERK
425.646.5221
kinerk@broderickgroup.com

CLAYTON HOLM
425.274.4287
holm@broderickgroup.com

The information contained herein has been given to us by the owner or sources which we deem reliable. We have no reason to doubt its accuracy, but we do not guarantee it. Prospective tenants should carefully verify all information contained herein.



[BACK TO AVAILABLE SPACE](#)



NORTH