



HERITAGE PLAZA SHOPPING CENTER

Retail Space Available For Lease

76th & Dodge Street, Omaha, Nebraska



2,016 SF RETAIL IN-LINE SPACE FOR LEASE

DEMOGRAPHICS

	1 mile	3 miles	5 miles
Est. Population	9,670	106,939	302,968
Avg. HH Income	\$82,884	\$79,714	\$70,985

- Surrounded by major national retailers such as Nebraska Furniture Mart, Lowe's, Sears, Target, and many more
- Adjacent to the Crossroads Mall, Hy Vee, Staples, Pier1, 24 Hour Fitness
- Join Best Buy, Chuck E. Cheese's, Buffalo Wild Wings, Charleston's, and more
- Competitively priced



CLICK HERE TO VIEW MORE LISTING INFORMATION

For More Information Contact:

DAVID BLOCK | 816.412.7400 | dblock@blockandco.com





HERITAGE PLAZA SHOPPING CENTER

Retail Space Available For Lease

76th & Dodge Street, Omaha, Nebraska

SHOPPING CENTER CO-TENANTS



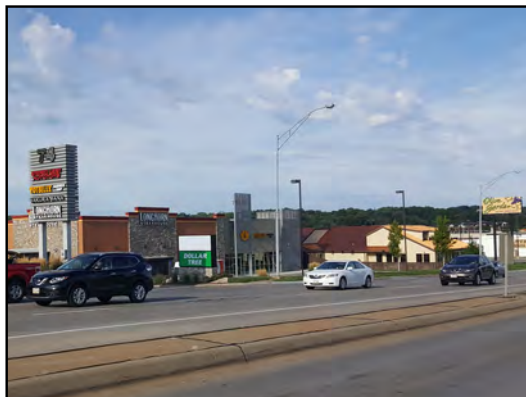


HERITAGE PLAZA SHOPPING CENTER

Retail Space Available For Lease

76th & Dodge Street, Omaha, Nebraska

CROSSROADS MALL & SURROUNDING TENANTS





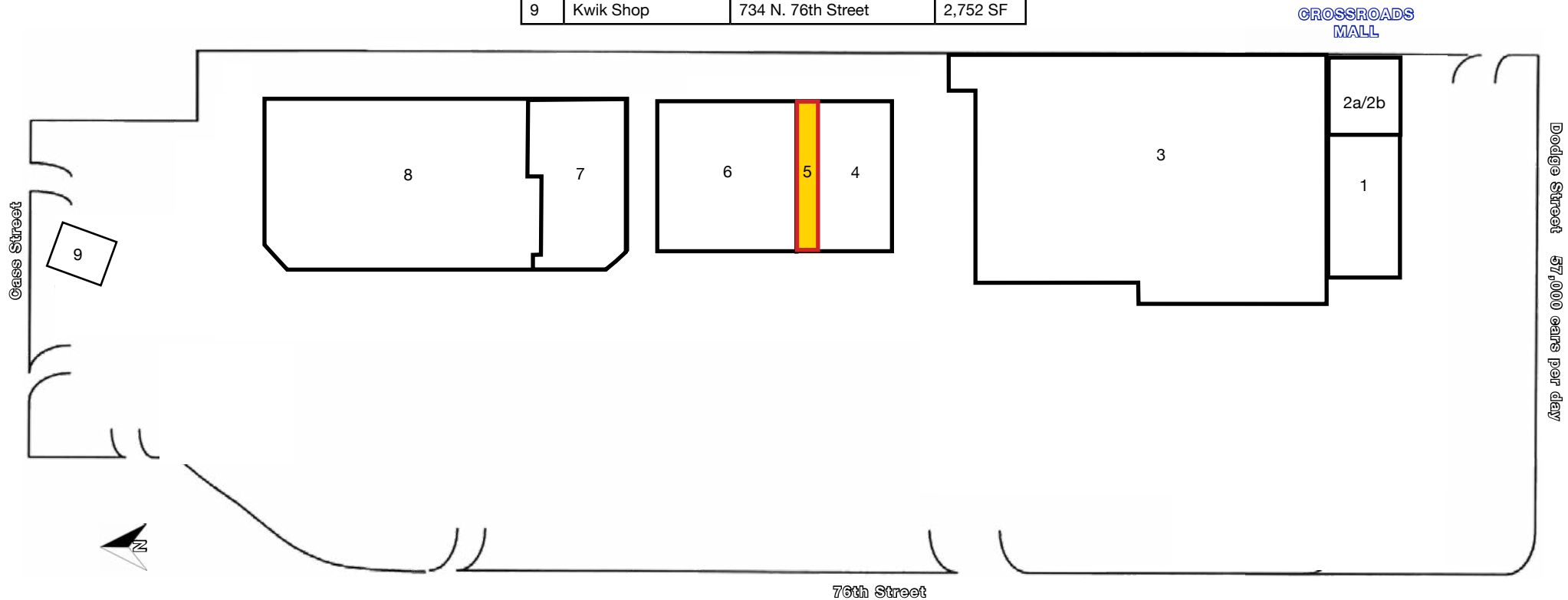
HERITAGE PLAZA SHOPPING CENTER

Retail Space Available For Lease
76th & Dodge Street, Omaha, Nebraska

2,016 +/- SF
IN-LINE SPACE
AVAILABLE

SITE PLAN

#	Tenant Name	Address	SF
1	Charleston's	7540 Dodge Street	7,697 SF
2a	Freezing Moo	7538 Dodge Street	1,971 SF
2b	Urban Bowl	7538 Dodge Street	1,600 SF
3	Best Buy	115 N. 76th Street	40,666 SF
4	Buffalo Wild Wings	205 N. 76th Street	7,287 SF
5	AVAILABLE	213 N. 76th Street	2,016 SF
6	Chuck E. Cheese's	225 N. 76th Street	13,822 SF
7	Small Smiles	311 N. 76th Street	8,034 SF
8	Asian Market	319-347 N. 76th Street	23,301 SF
9	Kwik Shop	734 N. 76th Street	2,752 SF

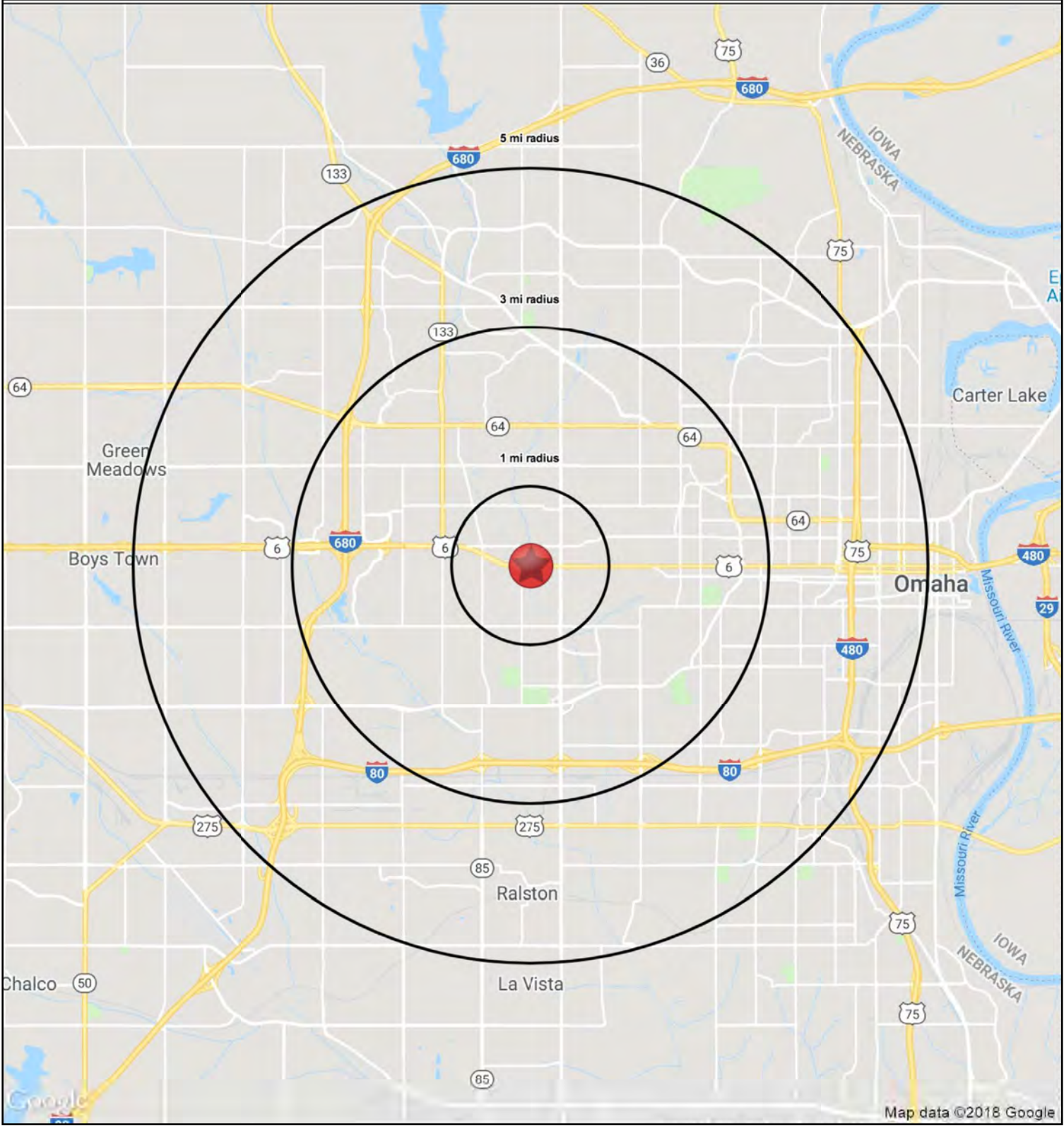




HERITAGE PLAZA SHOPPING CENTER

Retail Space Available For Lease

76th & Dodge Street, Omaha, Nebraska





HERITAGE PLAZA SHOPPING CENTER

Retail Space Available For Lease

76th & Dodge Street, Omaha, Nebraska

76th & Dodge Street		1 mi radius	3 mi radius	5 mi radius
Omaha, NE 68114				
POPULATION	2018 Estimated Population	9,670	106,939	302,968
	2023 Projected Population	10,090	111,823	319,049
	2010 Census Population	9,422	103,135	285,560
	2000 Census Population	9,179	104,906	287,943
	Projected Annual Growth 2018 to 2023	0.9%	0.9%	1.1%
	Historical Annual Growth 2000 to 2018	0.3%	0.1%	0.3%
	2018 Median Age	34.6	36.6	35.3
HOUSEHOLDS	2018 Estimated Households	4,295	48,502	129,256
	2023 Projected Households	4,525	51,272	137,665
	2010 Census Households	4,135	45,810	118,980
	2000 Census Households	4,070	46,903	120,778
	Projected Annual Growth 2018 to 2023	1.1%	1.1%	1.3%
	Historical Annual Growth 2000 to 2018	0.3%	0.2%	0.4%
RACE AND ETHNICITY	2018 Estimated White	78.6%	79.4%	69.1%
	2018 Estimated Black or African American	5.9%	9.3%	16.0%
	2018 Estimated Asian or Pacific Islander	10.7%	5.2%	4.5%
	2018 Estimated American Indian or Native Alaskan	0.6%	0.5%	0.8%
	2018 Estimated Other Races	4.2%	5.6%	9.7%
	2018 Estimated Hispanic	4.8%	6.9%	12.5%
INCOME	2018 Estimated Average Household Income	\$82,884	\$79,714	\$70,985
	2018 Estimated Median Household Income	\$57,695	\$61,624	\$56,279
	2018 Estimated Per Capita Income	\$37,235	\$36,311	\$30,565
EDUCATION (AGE 25+)	2018 Estimated Elementary (Grade Level 0 to 8)	2.7%	3.0%	5.3%
	2018 Estimated Some High School (Grade Level 9 to 11)	3.8%	4.0%	6.2%
	2018 Estimated High School Graduate	18.7%	21.7%	23.8%
	2018 Estimated Some College	19.3%	22.6%	23.0%
	2018 Estimated Associates Degree Only	6.3%	7.1%	7.5%
	2018 Estimated Bachelors Degree Only	29.7%	25.4%	22.1%
	2018 Estimated Graduate Degree	19.4%	16.1%	12.1%
BUSINESS	2018 Estimated Total Businesses	1,296	7,751	17,062
	2018 Estimated Total Employees	22,207	113,254	252,882
	2018 Estimated Employee Population per Business	17.1	14.6	14.8
	2018 Estimated Residential Population per Business	7.5	13.8	17.8