

Buckner Road

Columbia, South Carolina

For more information,
contact exclusive brokers:

Tombo Milliken

+1 803 744 9852
tombo.milliken@naicolumbia.com

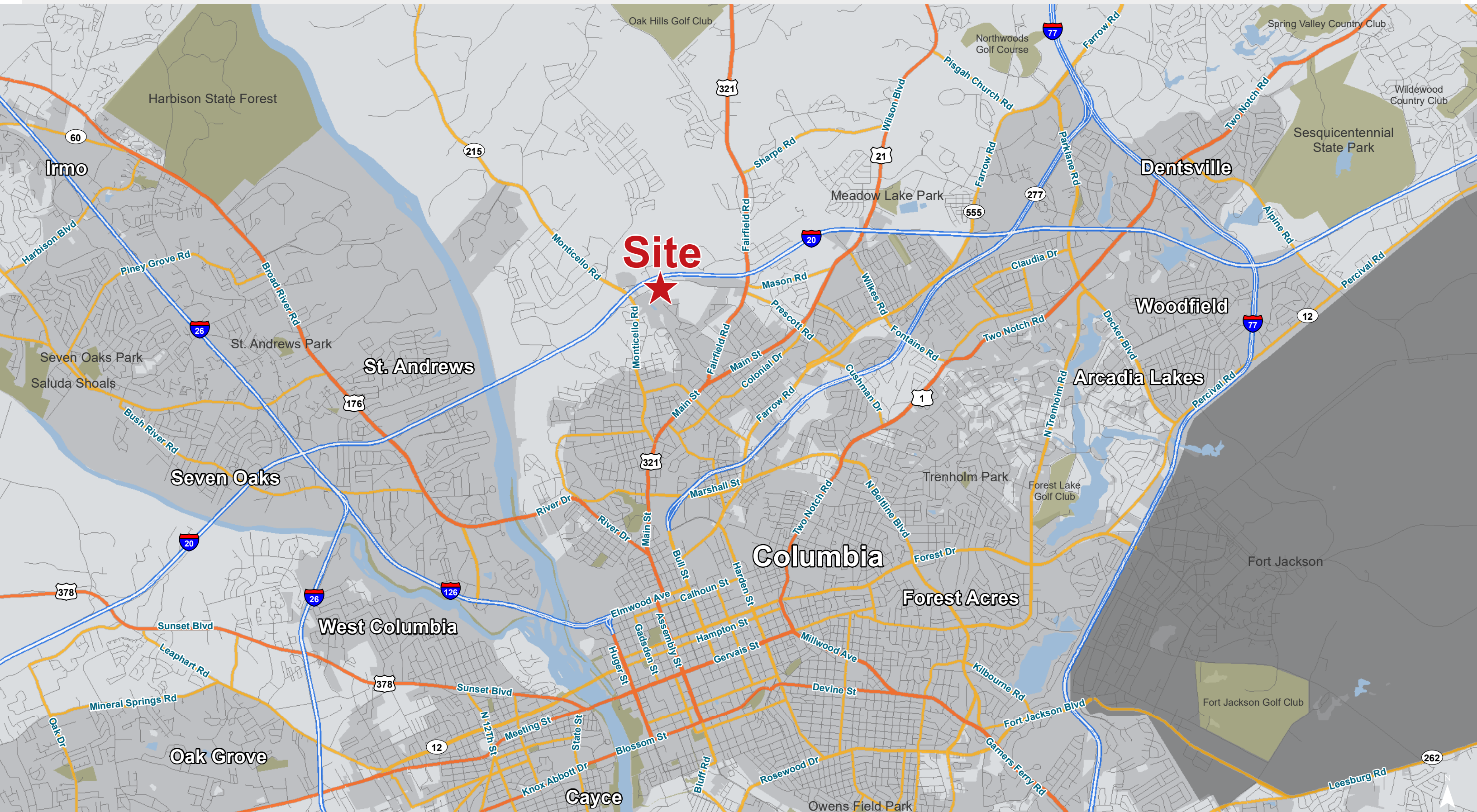
Tom Milliken

+1 803 744 9837
tmilliken@naicolumbia.com

Property Features

- 1 acre to 29 acre sites available
- Lot dimensions can be configured for individual requirements
- Water and Sewer located along Buckner Road
- Easy access to I-20, I-26, I-77, and Columbia Metropolitan Airport
 - I-20 = .34 miles
 - I-26 = 4.4 miles
 - 277 = 4.0 miles
 - I-77 = 5.3 miles
 - Airport = 9 miles
- Zoning: M-1, Richland County
- Sales Price: \$55,000 per acre
- ±1.74 acres: \$95,000

Location



Map Updated: Monday, January 16, 2017. This information submitted is not guaranteed. Although obtained from reliable sources, all information should be confirmed prior to use or reliance upon the information. This document may not be reproduced in whole or in part without the express written consent of NAI Avant.



Map Updated: Monday, January 16, 2017. This information submitted is not guaranteed. Although obtained from reliable sources, all information should be confirmed prior to use or reliance upon the information. This document may not be reproduced in whole or in part without the express written consent of NAI Avant.



Map Updated: Monday, January 16, 2017. This information submitted is not guaranteed. Although obtained from reliable sources, all information should be confirmed prior to use or reliance upon the information. This document may not be reproduced in whole or in part without the express written consent of NAI Avant.

Topographical Map: 2' Contours

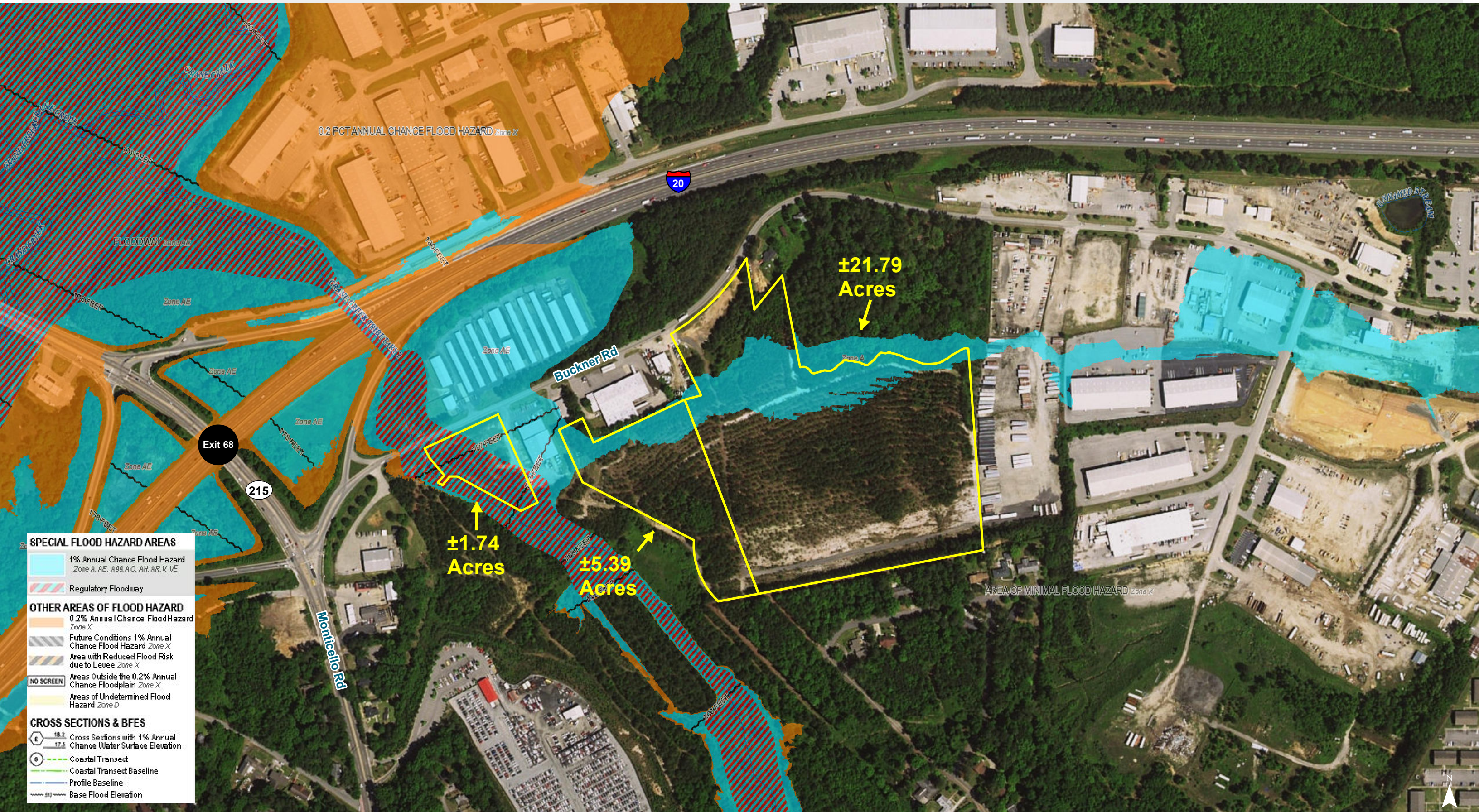


Map Updated: Monday, January 16, 2017. This information submitted is not guaranteed. Although obtained from reliable sources, all information should be confirmed prior to use or reliance upon the information. This document may not be reproduced in whole or in part without the express written consent of NAI Avant.

Topographical Map: 10' Contours



Map Updated: Monday, January 16, 2017. This information submitted is not guaranteed. Although obtained from reliable sources, all information should be confirmed prior to use or reliance upon the information. This document may not be reproduced in whole or in part without the express written consent of NAI Avant.



SPECIAL FLOOD HAZARD AREAS

- 1% Annual Chance Flood Hazard
Zone A, AE, A99, A0, AH, AR, X, VE
- Regulatory Floodway

OTHER AREAS OF FLOOD HAZARD

- 0.2% Annual Chance Flood Hazard
Zone X
- Future Conditions 1% Annual Chance Flood Hazard
Zone X
- Area with Reduced Flood Risk due to Levee
Zone X
- Areas Outside the 0.2% Annual Chance Floodplain
Zone X
- Areas of Undetermined Flood Hazard
Zone D

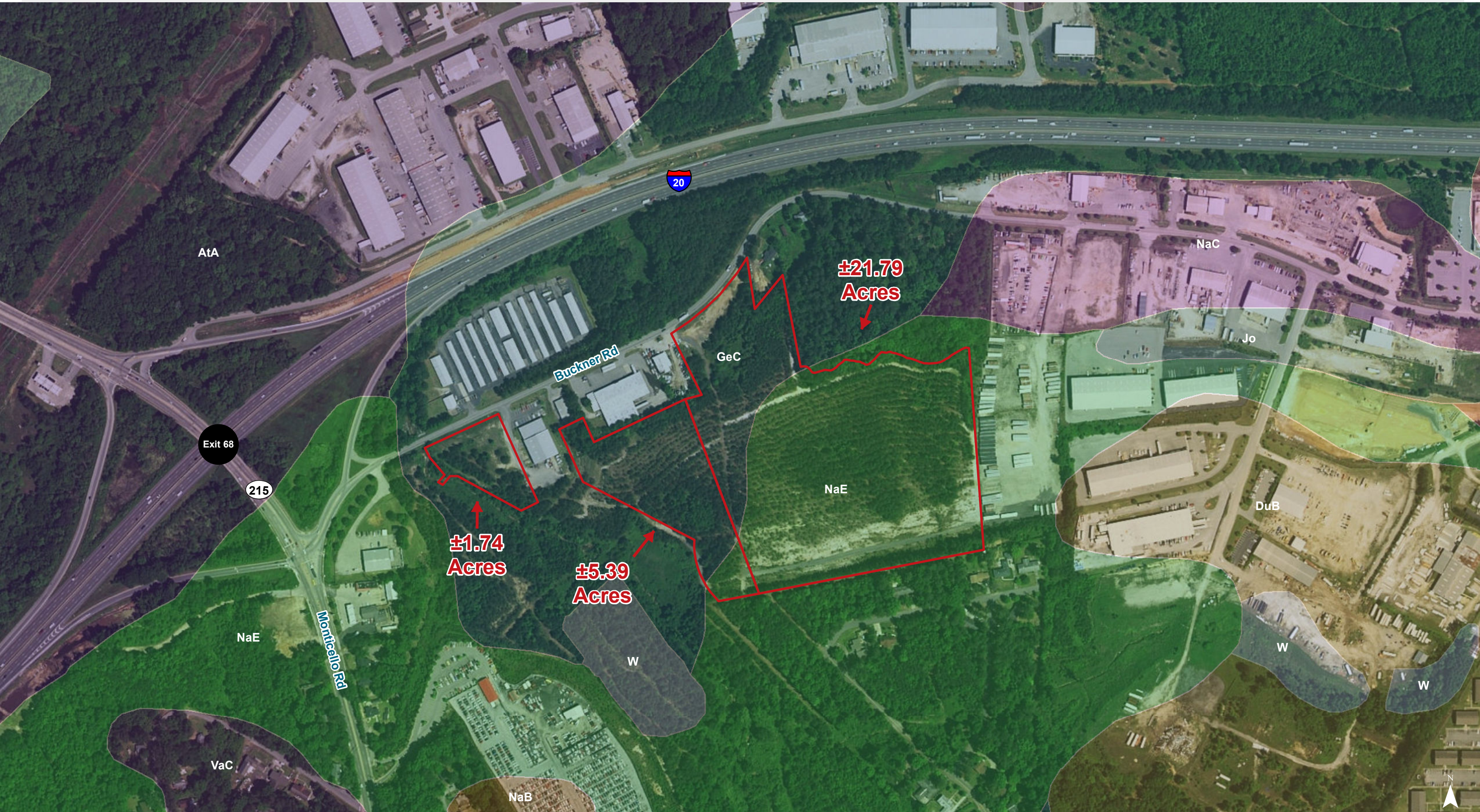
CROSS SECTIONS & BFES

- 16.2 Cross Sections with 1% Annual Chance Water Surface Elevation
- 17.5 Coastal Transect
- Coastal Transect Baseline
- Profile Baseline
- Base Flood Elevation

Map Updated: Monday, January 16, 2017. This information submitted is not guaranteed. Although obtained from reliable sources, all information should be confirmed prior to use or reliance upon the information. This document may not be reproduced in whole or in part without the express written consent of NAI Avant.



Map Updated: Monday, January 16, 2017. This information submitted is not guaranteed. Although obtained from reliable sources, all information should be confirmed prior to use or reliance upon the information. This document may not be reproduced in whole or in part without the express written consent of NAI Avant.



Map Updated: Monday, January 16, 2017. This information submitted is not guaranteed. Although obtained from reliable sources, all information should be confirmed prior to use or reliance upon the information. This document may not be reproduced in whole or in part without the express written consent of NAI Avant.

Map Unit Description (Brief, Generated)

Richland County, South Carolina

[Minor map unit components are excluded from this report]

GeC - Georgeville silt loam, 6 to 10 percent slopes

Georgeville (100%)

The Georgeville component makes up 100 percent of the map unit. Slopes are 6 to 10 percent. This component is on hillslopes on uplands. The parent material consists of clayey residuum weathered from slate. Depth to a root restrictive layer is greater than 60 inches. The natural drainage class is well drained. Water movement in the most restrictive layer is moderately high. Available water to a depth of 60 inches is high. Shrink-swell potential is low. This soil is not flooded. It is not ponded. There is no zone of water saturation within a depth of 72 inches. Organic matter content in the surface horizon is about 1 percent. Nonirrigated land capability classification is 3e. This soil does not meet hydric criteria.

NaE - Nason complex, 10 to 30 percent slopes

Nason (100%)

The Nason component makes up 100 percent of the map unit. Slopes are 10 to 30 percent. This component is on hillslopes on uplands. The parent material consists of clayey residuum weathered from slate. Depth to a root restrictive layer, bedrock, paralithic, is 40 to 60 inches. The natural drainage class is well drained. Water movement in the most restrictive layer is moderately high. Available water to a depth of 60 inches is moderate. Shrink-swell potential is moderate. This soil is not flooded. It is not ponded. There is no zone of water saturation within a depth of 72 inches. Organic matter content in the surface horizon is about 2 percent. Nonirrigated land capability classification is 4e. This soil does not meet hydric criteria.