



1.9 ACRES OF LAND AVAILABLE FOR SALE

2308 FLEMING ROAD

GREENSBORO, NC 27410



2308 FLEMING ROAD

GREENSBORO, NC 27410

PROPERTY OVERVIEW



OFFERING SUMMARY

Sale Price:	\$585,000
Price / SF:	\$7.07
Lot Size:	1.9 Acres
Zoning:	Neighborhood Business

PROPERTY OVERVIEW

1.9 Acres of land available with high visibility and approximately 200 feet of frontage, centered between an intersection of retail and The Cardinal County Club.

Adjacent 4.7 acres available for larger use.

PROPERTY HIGHLIGHTS

- Located near Fleming Rd. & Inman Rd.
- Among four corners of retail: BP, CVS, Dollar General, McDonald's, Taco Bell, Food Lion, ABC Store, La Petite Academy
- Zoning: Neighborhood Business
- Easy Access to I-73 (Greensboro Urban Loop), Bryan Blvd, I-40 & Highway 68
- More people work in the vicinity of the airport than in Downtown Greensboro, NC

DEMOGRAPHICS

	1 Mile	3 Miles	5 Miles
Total Households:	1,577	14,238	38,885
Total Population:	3,998	34,068	89,798
Average HH Income:	\$88,205	\$84,388	\$80,104

2308 FLEMING ROAD

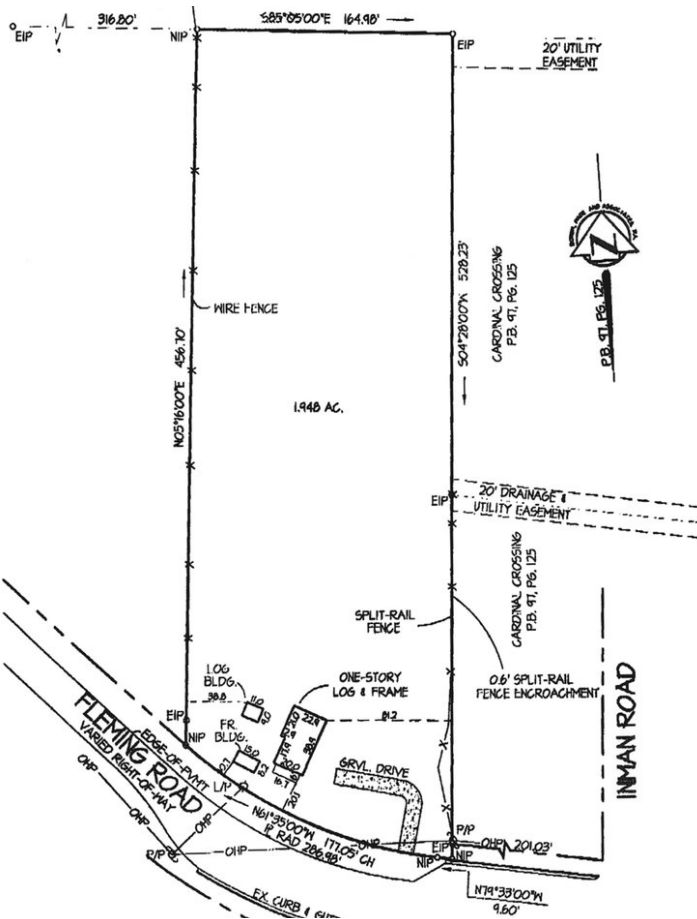
GREENSBORO, NC 27410

ADDITIONAL PHOTOS





Diana Teitsma
 Senior Vice President
 980.819.0092
 Dteitsma@divaris.com



The information contained herein should be considered confidential and remains the sole property of Divaris Real Estate, Inc. at all times. Although every effort has been made to ensure accuracy, no liability will be accepted for any errors or omissions. Disclosure of any information contained herein is prohibited except with the express written permission of Divaris Real Estate, Inc.