

EL CAMINO OFFICE BUILDINGS

17043-17049 EL CAMINO REAL | HOUSTON, TEXAS



AMENITIES & HIGHLIGHTS

- Building signage available
- Ample free parking available
- Card-Key Access system & after hours visitor phone
- On-site Day Porter
- High speed internet available
- Convenient to I-45 and Beltway 8
- Located 10 minutes from Baybrook Mall and only 15 minutes from the Kemah Boardwalk
- Located 15 minutes from Hobby Airport



FOR LEASING INFORMATION, CONTACT:

COURTNEY BUCKOUT

713.209.5959

cbuckout@pmrg.com

OFFICE SPACE FOR LEASE

AVAILABLE SPACE

17043 EL CAMINO REAL

SUITE	SQ. FT.	COMMENTS
203	1,875	Available

17045 EL CAMINO REAL

SUITE	SQ. FT.	COMMENTS
101	1,735	Available
108	1,157	Available

17047 EL CAMINO REAL

SUITE	SQ. FT.	COMMENTS
140	2,016	Available
207	1,712	Available
210	2,037	Available
211	828	Available
215	838	Available
217	875	Available

17049 EL CAMINO REAL

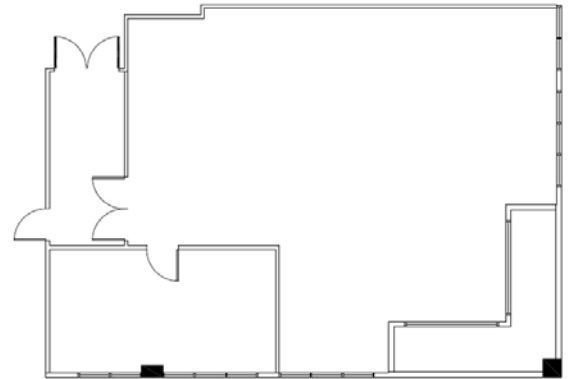
SUITE	SQ. FT.	COMMENTS
204	1,409	Available



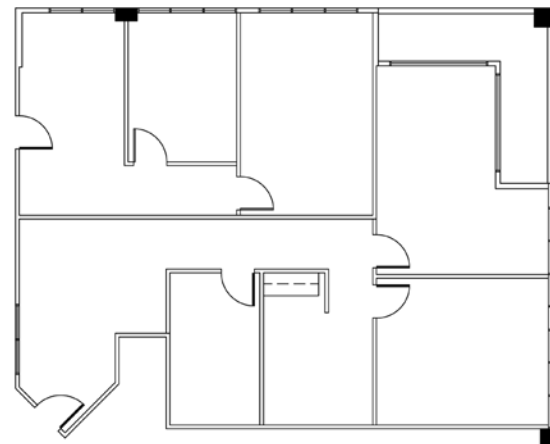
Located in the NASA/Clear Lake Submarket on El Camino Real and Bay Area Blvd.

SAMPLE FLOOR PLANS

17043 EL CAMINO REAL
SUITE 203 - 1,875 RSF



17047 EL CAMINO REAL
SUITE 140 - 2,016 RSF



FOR LEASING INFORMATION, CONTACT:

COURTNEY BUCKOUT

713.209.5959

cbuckout@pmrg.com

PMRG | PM Realty Group