

605 S. Division Street, Harvard, IL

± 2,130 SF FOR SALE/LEASE



Freestanding Retail

## SPECIFICATIONS

AVAILABLE SIZE: ± 2,130 SF

LOT SIZE: 0.92 Acres

PARKING: 22 Spaces

CONSTRUCTION: Brick/Block

YEAR BUILT: 1998

Freezer/Cooler: Yes

Drive-thru: Yes

ZONING: B-2

RE TAXES: \$1.79 PSF

**For Lease: \$30.00 PSF NNN**

**SALE PRICE: \$690,000**

- Superior retail exposure on US HWY 14 in a high traffic volume area
- Drive-Thru window
- Low McHenry County taxes
- Proximity to major restaurants and shopping centers
- In route to destination Lake Geneva

### Contact:

Mike DeSerto  
224-588-3026  
mdeserto@entrecmercial.com

Cory Kay  
224-532-2497  
ckay@entrecmercial.com

Elisabeth Lazzara  
847-310-4209  
elazzara@entrecmercial.com

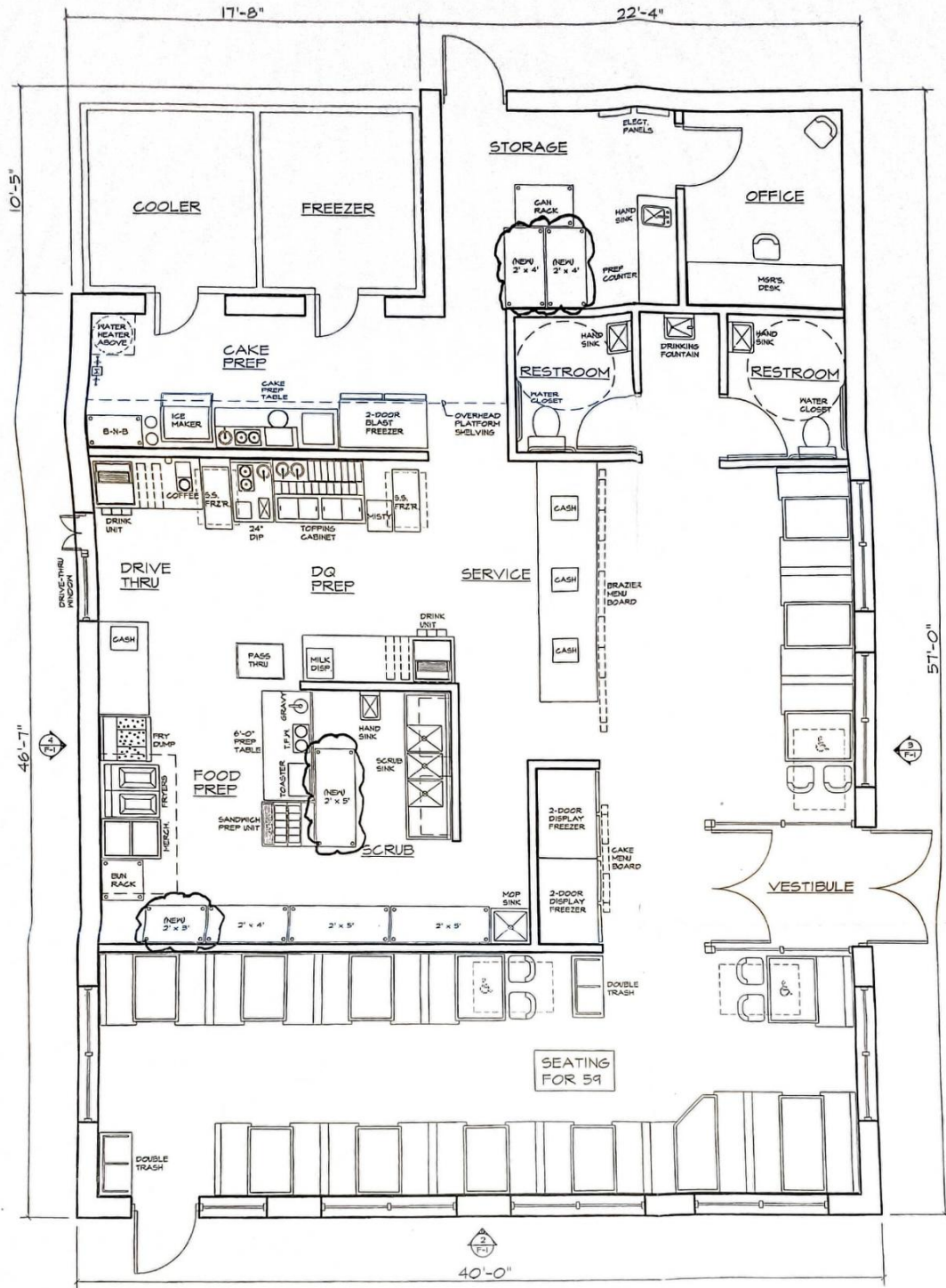
[www.entrecmercial.com](http://www.entrecmercial.com)

3550 Salt Creek Lane, Suite 104, Arlington Heights, IL. 60005

**ENTRE**  
Commercial Realty LLC

605 S. Division Street, Harvard, IL

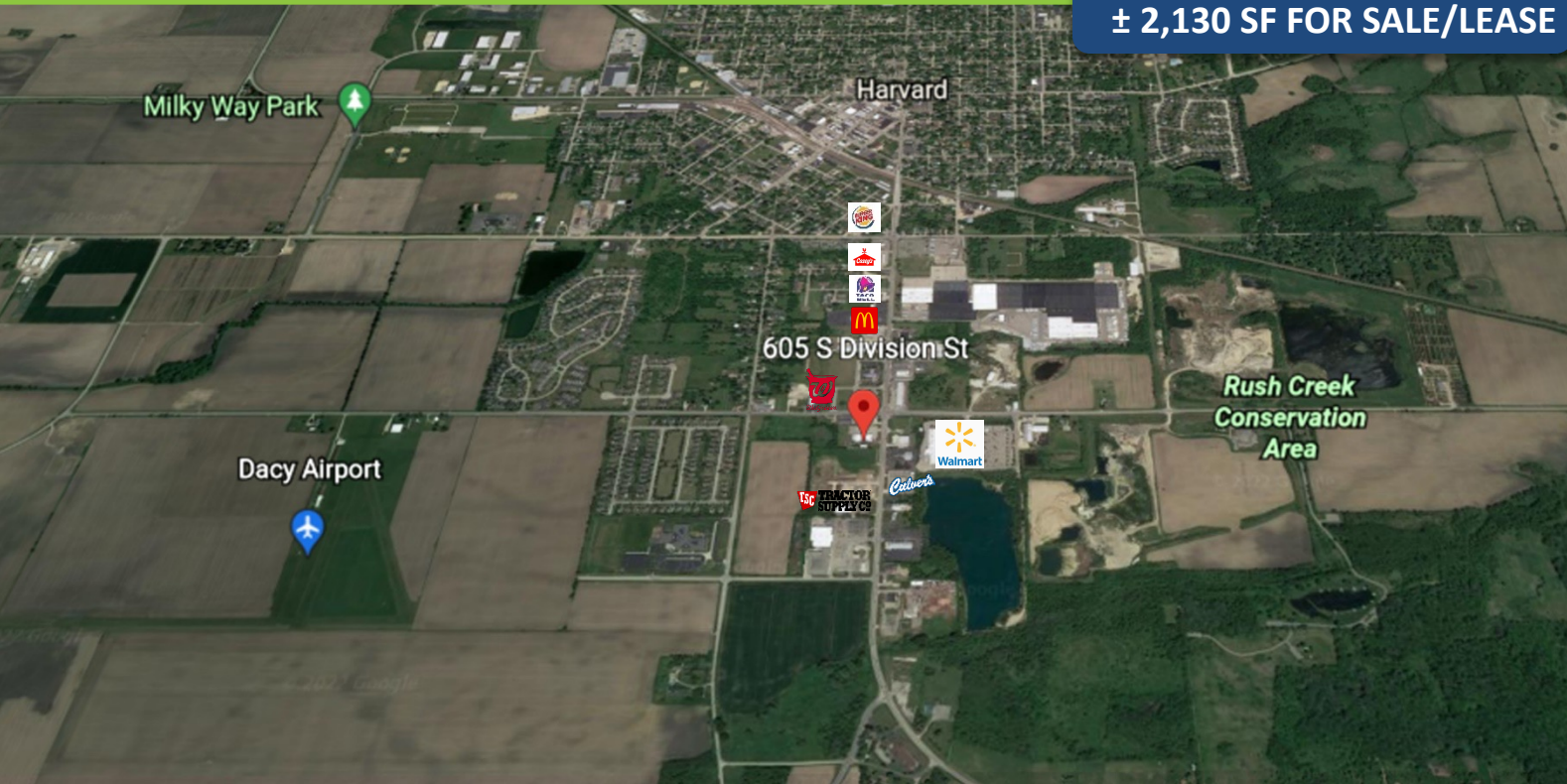
± 2,130 SF FOR SALE/LEASE





# 605 S. Division Street, Harvard, IL

± 2,130 SF FOR SALE/LEASE



## Contact:

Mike DeSerto  
 224-588-3026  
 mdeserto@entrecommercial.com

Cory Kay  
 224-532-2497  
 ckay@entrecommercial.com

Elisabeth Lazzara  
 847-310-4209  
 elazzara@entrecommercial.com

[www.entrecommercial.com](http://www.entrecommercial.com)

3550 Salt Creek Lane, Suite 104, Arlington Heights, IL. 60005

