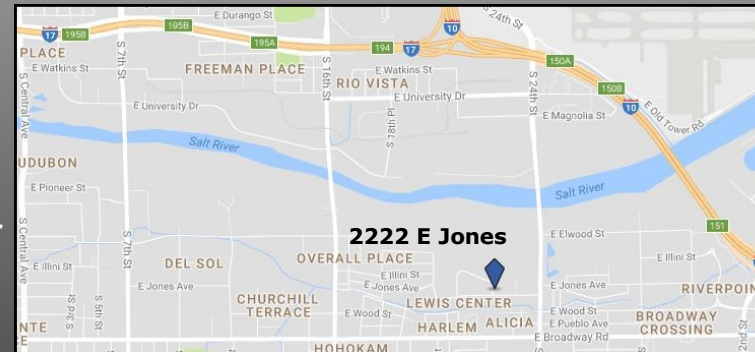




PROPERTY FEATURES:

- ♦ ±19,224 SF (Footprint)
- ♦ 5 Grade Level ±10'x10' Overhead Doors
- ♦ 2 Truck Wells
- ♦ ±800 Amps ±120/208 V 3-Phase Power
- ♦ 5 Private Offices, Breakroom, 4 Restrooms, Reception and Will Call
- ♦ ±19'- 20' Clear Height
- ♦ Fire Sprinklered
- ♦ ±1,800 SF Air Conditioned Production Area
- ♦ Bonus Mezzanine Storage with Pallet Elevator
- ♦ A-1 Zoning



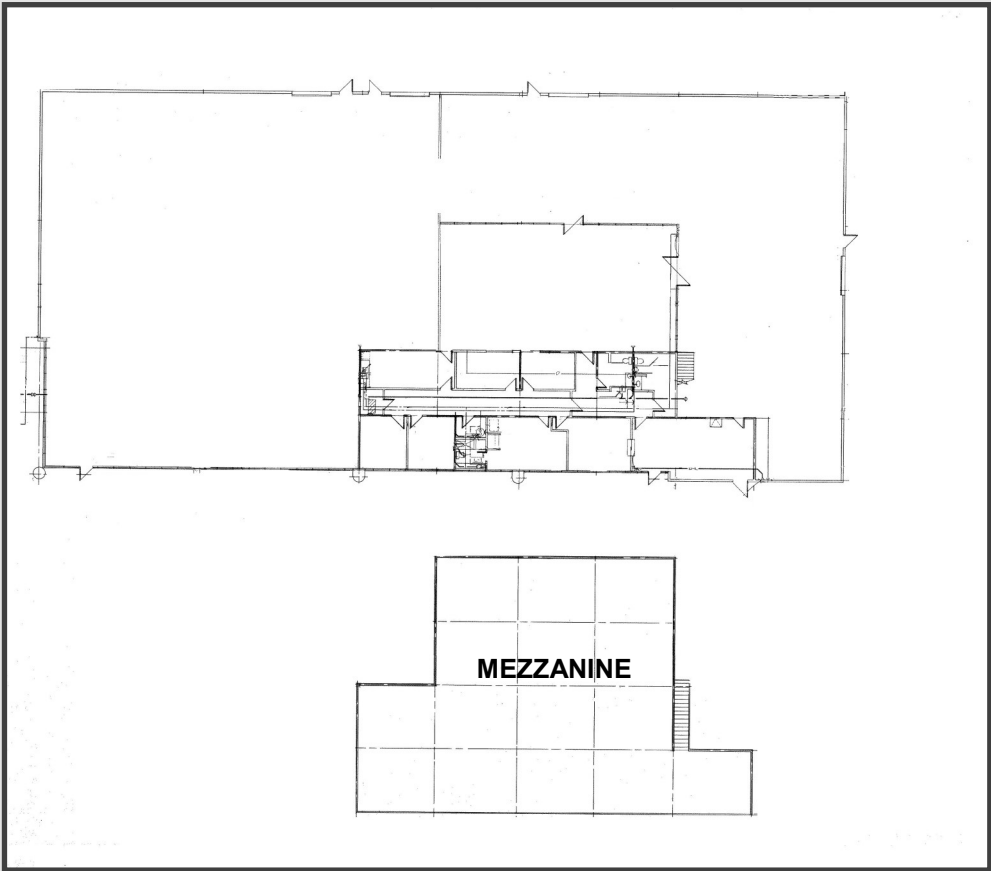
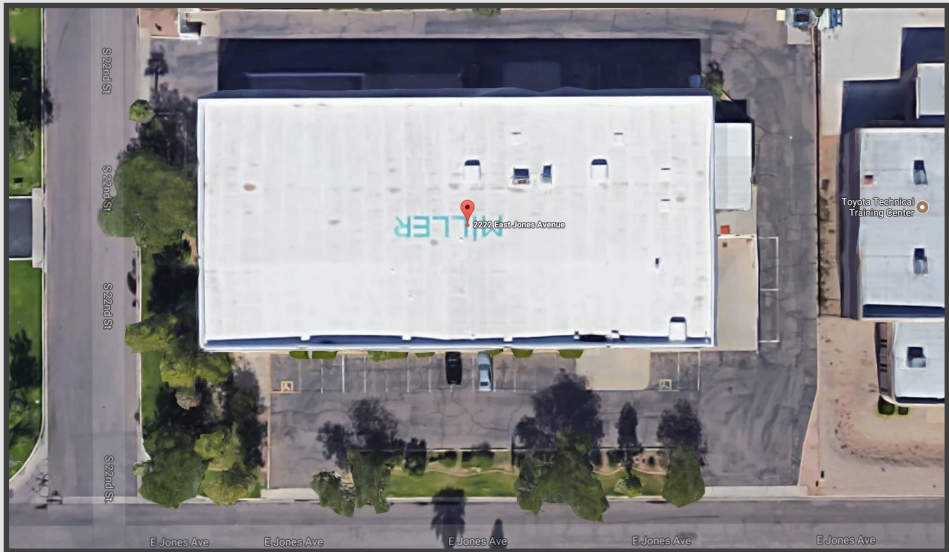
CUTLER COMMERCIAL
2150 E HIGHLAND AVE, STE 207
PHOENIX, ARIZONA 85016
602.955.3500 Phone
602.955.2828 Fax
www.cutlercommercial.com

For More Information, Please Contact:

ROD CROTTY
ASSOCIATE BROKER
(602) 386-1225
rcroty@cutlercommercial.com

TODD HAMILTON, CCIM
ASSOCIATE BROKER
(602) 386-1226
thamilton@cutlercommercial.com

FRANKLIN CONNELL
ASSOCIATE
(602) 386-1247
fconnell@cutlercommercial.com



(NOT DRAWN TO SCALE, ALL DIMENSIONS AND FIGURES ARE APPROXIMATE)



CUTLER COMMERCIAL
2150 E HIGHLAND AVE, STE 207
PHOENIX, ARIZONA 85016
602.955.3500 Phone
602.955.2828 Fax
www.cutlercommercial.com