



WESTSIDE
INDUSTRIAL PARK

JACKSONVILLE'S PREMIERE INDUSTRIAL PARK

8215 WESTSIDE INDUSTRIAL DRIVE, JACKSONVILLE, FLORIDA



PATTILLO

INDUSTRIAL REAL ESTATE

Westside Industrial Park is the largest industrial park in Northeast Florida, and home to a high percentage of the paramount manufacturing and distribution facilities in the Jacksonville market. Availabilities within the park range from 8,000 to 300,000 square feet, and offer quick access to major highways, ports, and airport.

Westside Industrial Park occupants benefit from the park's adjacency to the UPS regional distribution center, the CSX intermodal yard, and close proximity to a high caliber labor force. In addition, the Norfolk Southern intermodal yard is within three miles; and most major trucking companies are within five miles.

www.westsideindustrialpark.com

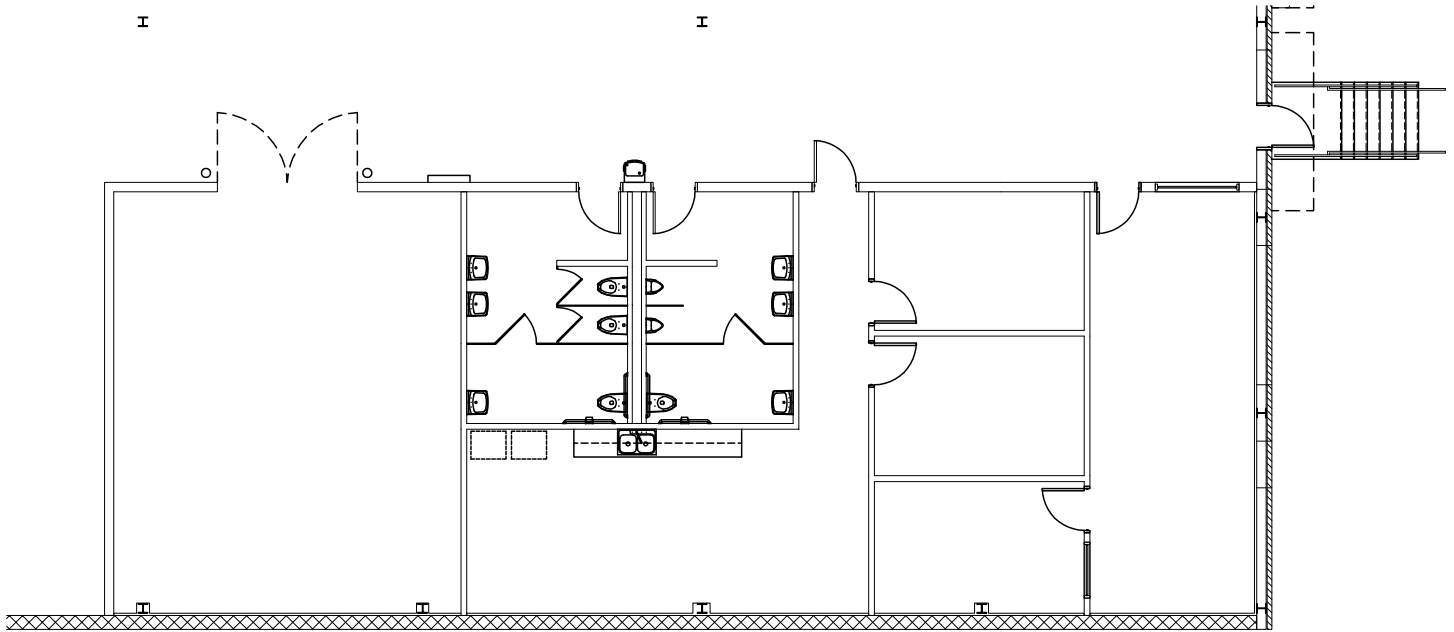
Building specifications

Features			
Available	61,008 s.f.	Drive-in ramp	1 (12' x 15')
Office (s.f.)	2,555 s.f.	Dock equipment	4 mechanical pit levelers
Year built	1995	Grade-level	1 (10' x 10')
Clear height	24'	Truck court	160' paved
Column spacing	42' x 40'	Auto parking	100
Docks doors	6 (10' x 10')	Power	800a/277-480v 3p 4w Heavy

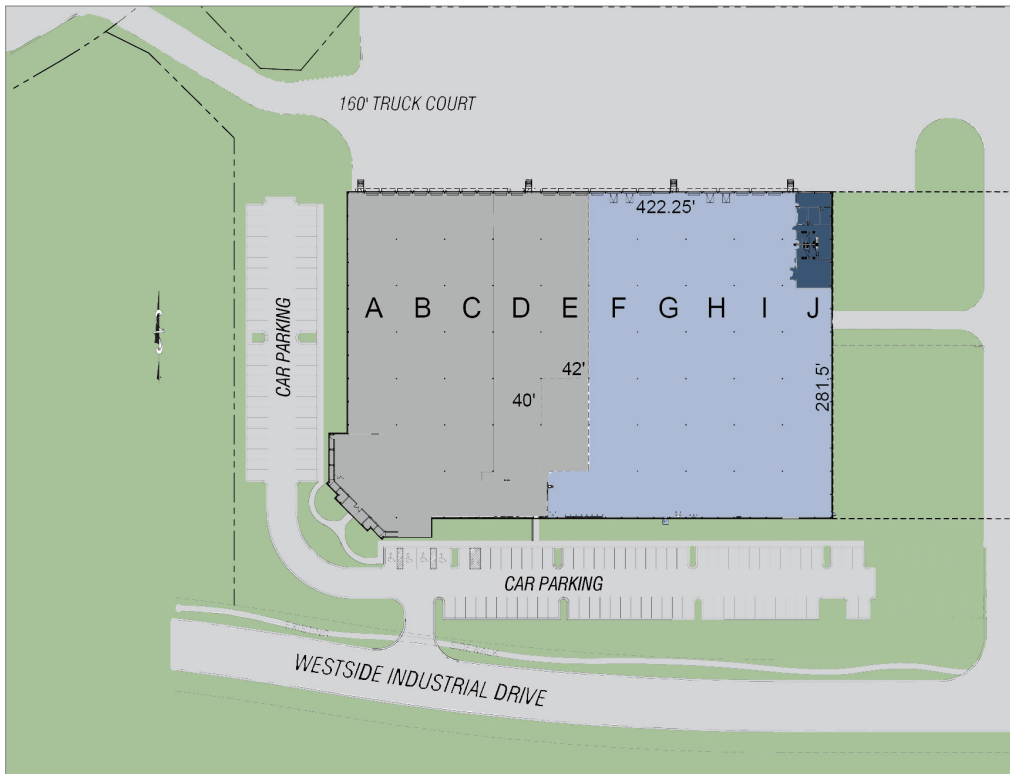
Aerial map



Office plan



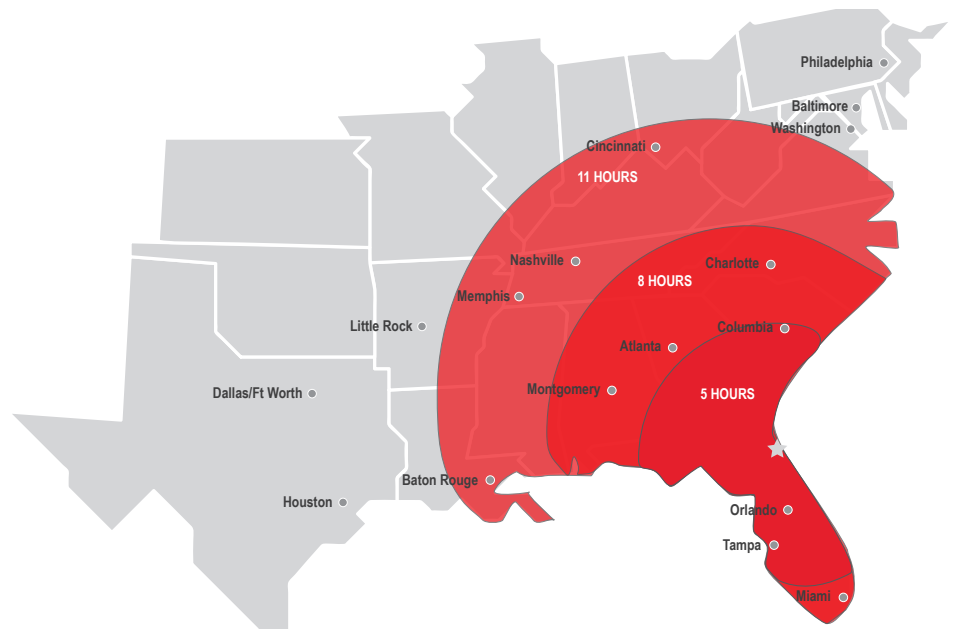
Site plan - Units F-J





Notable Drive Times

Location	Distance
Savannah, GA	142 miles
Orlando, FL	154 miles
Tampa, FL	209 miles
Charleston, SC	242 miles
Atlanta, GA	345 miles
Miami, FL	359 miles
Montgomery, AL	366 miles
Charlotte, NC	387 miles
Baltimore, MD	846 miles
Houston, TX	862 miles



Contact

Luke Pope, SIOR
 Executive Vice President
 luke.pope@am.jll.com
 +1 904 356 4550

DISCLAIMER

Jones Lang LaSalle Brokerage, Inc.
 © 2020 Jones Lang LaSalle IP, Inc. All rights reserved. All information contained herein is from sources deemed reliable; however, no representation or warranty is made to the accuracy thereof.

