



**LLOYD**  
COMPANIES

# 26TH & SOUTHEASTERN

OFFICE SPACE AVAILABLE



1720 S Southeastern Ave, Suite #2  
Sioux Falls, SD 57103

# FOR LEASE

\$12.00 / SF NNN  
5,080 SF

## SIZE

- 5,080 SF

## PRICE

- \$12.00 / SF NNN
- Estimated NNN: \$5.30 / SF

## LOCATION

- Located within close proximity to an I-229 on-ramp.

## DESCRIPTION

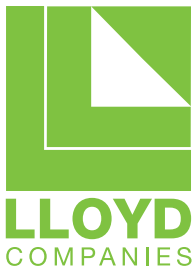
- Floor plan includes a lobby, restrooms, eight private offices, two cubicle areas, two conference rooms, supply room, IT room and kitchenette
- Now Available
- Estimated NNNs do not include en-suite utilities or cleaning
- Contact Broker for additional information; Advanced notice is required

Find out more at [Lloydcompanies.com](http://Lloydcompanies.com)

**RAQUEL BLOUNT, SIOR**

**605 728-9092**

[raquel@lloydcompanies.com](mailto:raquel@lloydcompanies.com)



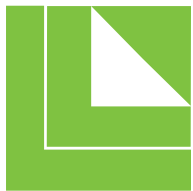
# 26TH & SOUTHEASTERN

## OFFICE SPACE AVAILABLE



RAQUEL BLOUNT, SIOR  
**605 728-9092**  
raquel@lloydcompanies.com

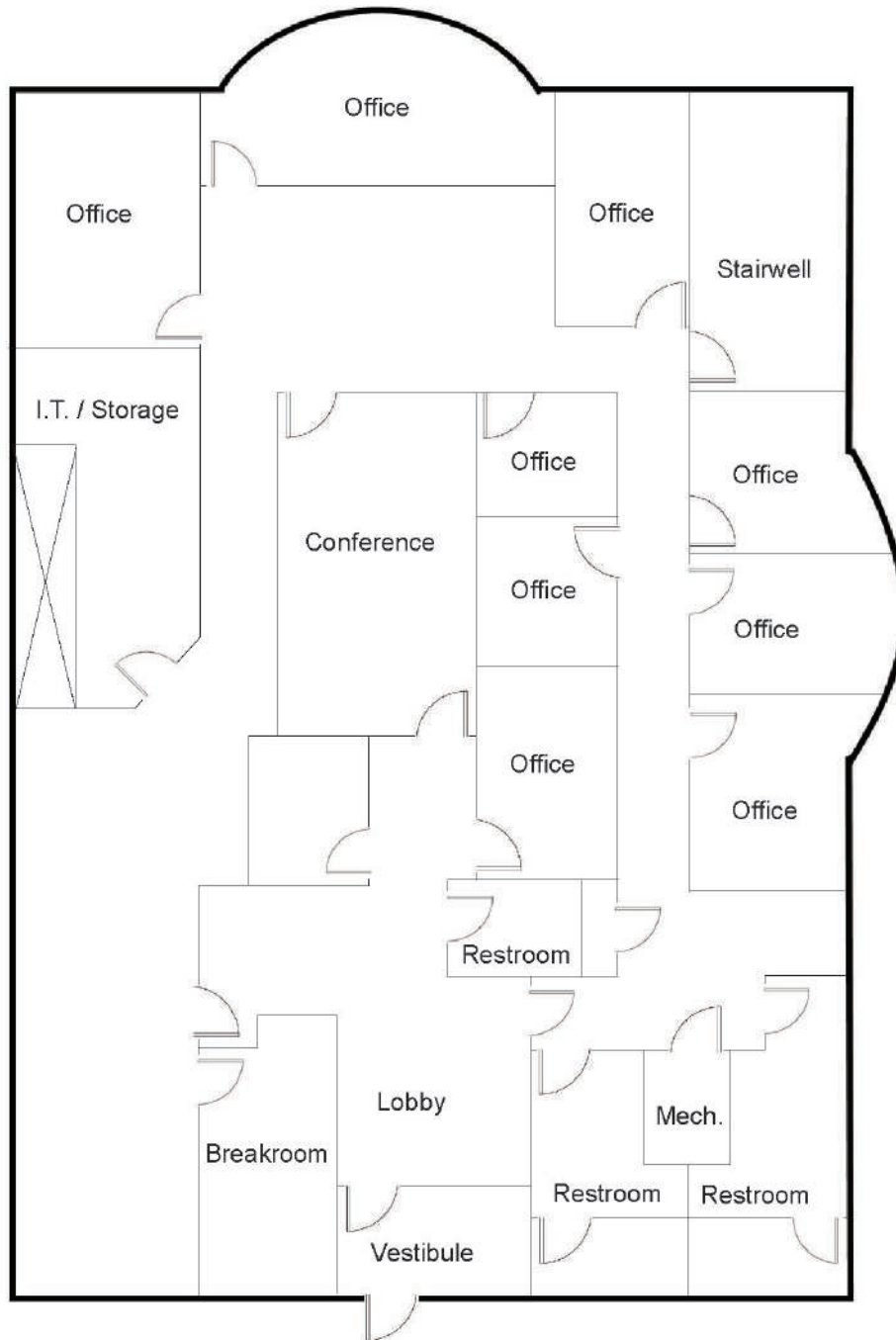
**INTERIOR PICTURES**



**LLOYD**  
COMPANIES

# 26TH & SOUTHEASTERN

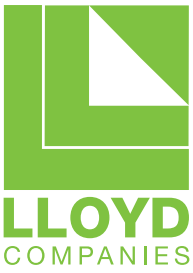
OFFICE SPACE AVAILABLE



## FLOOR PLAN

Concept only;  
Subject to change

RAQUEL BLOUNT, SIOR  
**605 728-9092**  
raquel@lloydcompanies.com



# 26TH & SOUTHEASTERN

OFFICE SPACE AVAILABLE



## SITE AERIAL

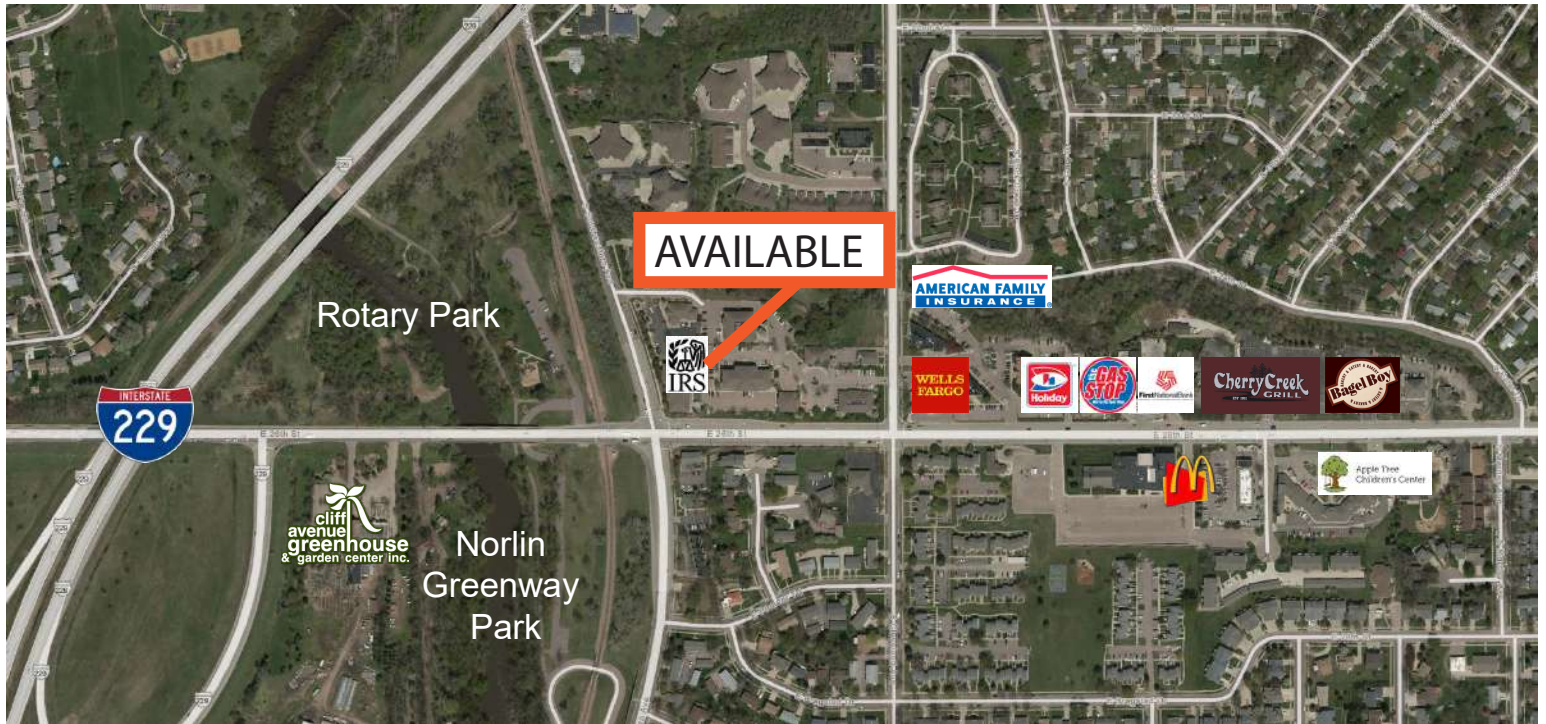
RAQUEL BLOUNT, SIOR  
**605 728-9092**  
raquel@lloydcompanies.com



**LLOYD**  
COMPANIES

# 26TH & SOUTHEASTERN

OFFICE SPACE AVAILABLE



## AREA MAP



RAQUEL BLOUNT, SIOR  
**605-728-9092**  
raquel@lloydcompanies.com

## EXTERIOR PICTURE