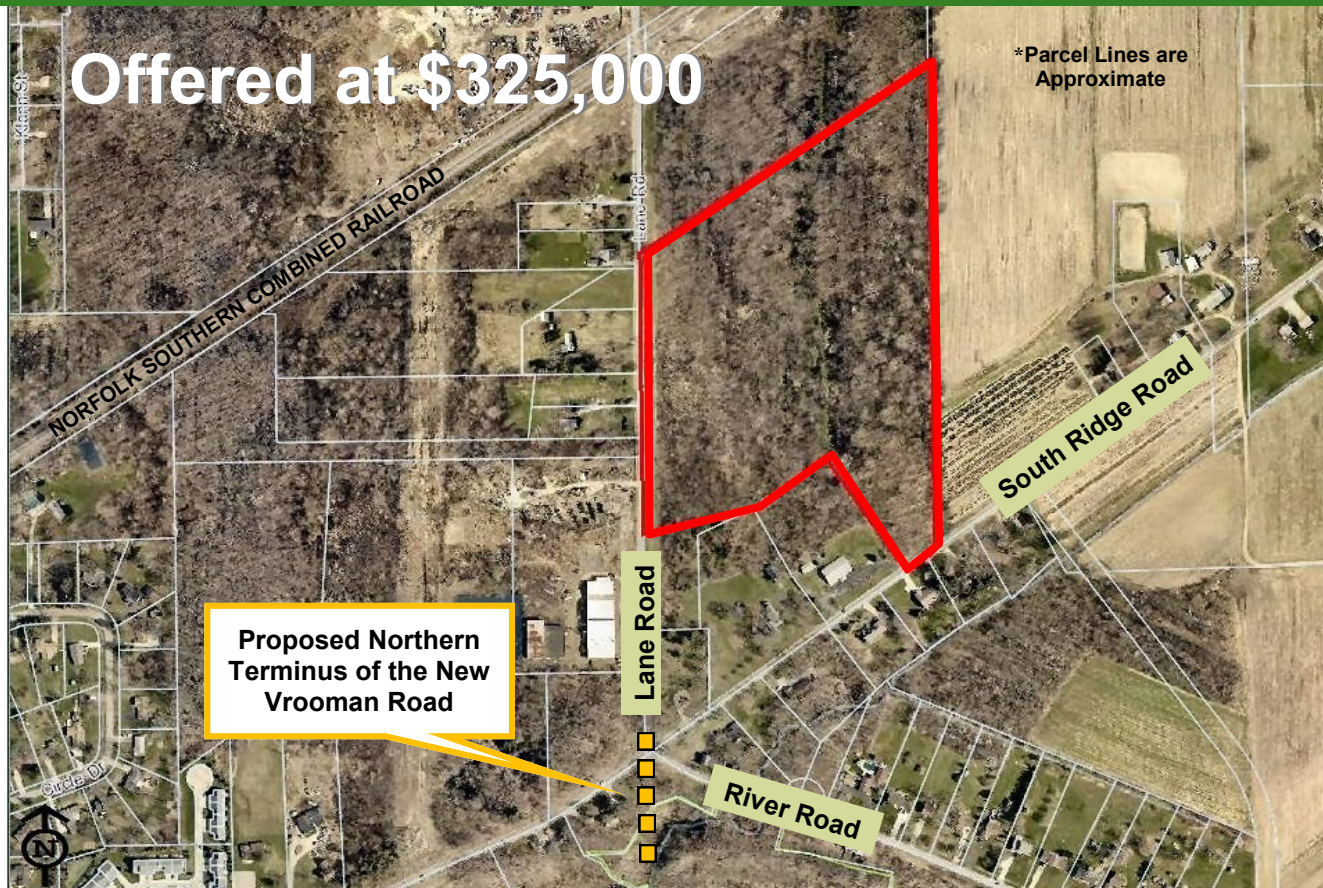


Near Proposed Vrooman Road Bridge

# Prime Development Site 22± Acres

Perry Township, Ohio 44081 (Lake County)



## Offered at \$325,000

### Property Features:

- Prime Commercial/Light Industrial Site
- Perfect for Neighborhood Business
- Economic Development Incentives Available
- City Water at Lane Road
- Build to Suit Opportunities Available
- Easy Access to Interstate 90 and SR 20 & SR 6
- 19± Acres Zoned Light Industry
- No Local Income Tax



[www.GlobalCommercialRE.com](http://www.GlobalCommercialRE.com)  
8585 East Ave., Mentor, Ohio 44060

**Real Estate Advisors Inc.**  
BROKER

**Global Real Estate  
Advisors Inc.**

**Nancy Stark Zangerle**  
440-255-5552 Ext. 229  
216-316-0913 Cell

[Nancy@GlobalCommercialRE.com](mailto:Nancy@GlobalCommercialRE.com)

**Neil Sawicki, SIOR, Broker**  
440-255-5552 Ext. 221  
[Neil@GlobalCommercialRE.com](mailto:Neil@GlobalCommercialRE.com)

This information has been secured from sources we believe are reliable, but we make no representations or warranties, expressed or implied, as to the accuracy of the information. References to condition, square footage or age are approximate. Buyer or Tenant acknowledges that they are relying on their own investigations and are not relying on Broker provided information. Procuring broker shall only be entitled to a commission, calculated in accordance with the rates approved by our principal only if such procuring broker executes a brokerage agreement acceptable to us and our principal and the conditions as set forth in the brokerage agreement are fully and unconditionally satisfied. Although all information furnished regarding property for sale, rental, or financing is from sources deemed reliable, such information has not been verified and no express representation is made nor is any to be implied as to the accuracy thereof and it is submitted subject to errors, omissions, change of price, rental or other conditions, prior sale, lease or financing, or withdrawal without notice and to any special conditions imposed by our principal.



Near Proposed Vrooman Road Bridge

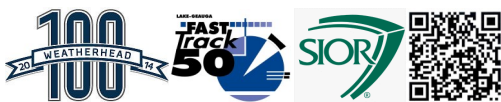
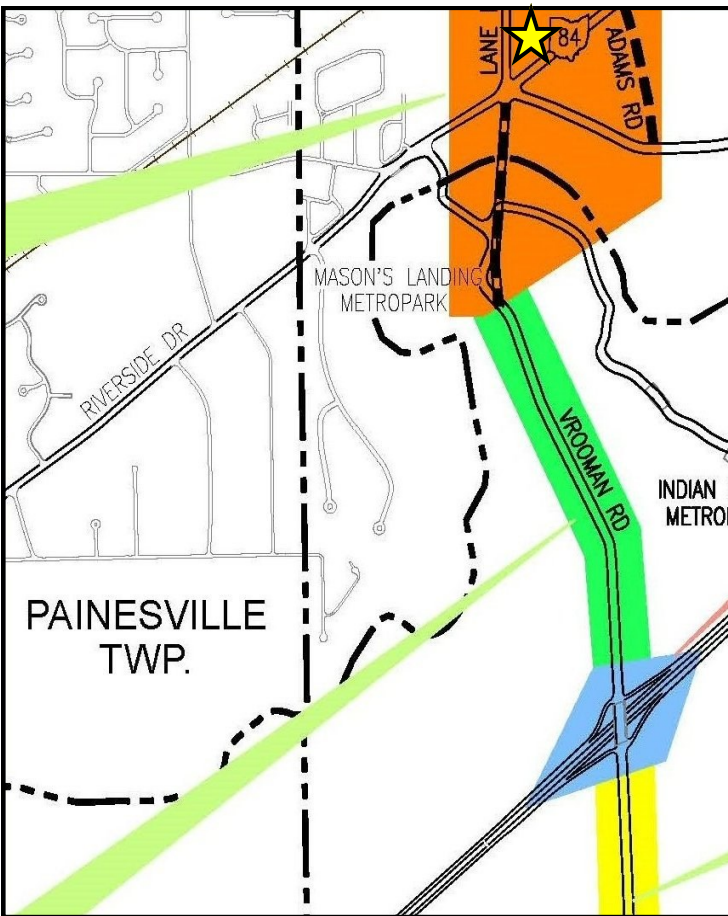
# Prime Development Site 22± Acres

Perry Township, Ohio 44081 (Lake County)

## SITE DEMOGRAPHIC PROFILE 2015

\*Information obtained from *Site To Do Business*

	1 Mile	5 Miles	10 Miles
Total Estimated Population	1,533	47,714	135,094
Median Age	43.4	38.6	42.6
Estimated Households	630	17,969	53,165
Median Household Income	\$73,117	\$52,321	\$59,089



[www.GlobalCommercialRE.com](http://www.GlobalCommercialRE.com)  
8585 East Ave., Mentor, Ohio 44060

**Real Estate Advisors Inc.**  
BROKER

**Global Real Estate  
Advisors Inc.**

**Nancy Stark Zangerle**  
440-255-5552 Ext. 229  
216-316-0913 Cell

[Nancy@GlobalCommercialRE.com](mailto:Nancy@GlobalCommercialRE.com)

**Neil Sawicki, SIOR, Broker**  
440-255-5552 Ext. 221

This information has been secured from sources we believe are reliable, but we make no representations or warranties, expressed or implied, as to the accuracy of the information. References to condition, square footage or age are approximate. Buyer or Tenant acknowledges that they are relying on their own investigations and are not relying on Broker provided information. Procuring broker shall only be entitled to a commission, calculated in accordance with the rates approved by our principal only if such procuring broker executes a brokerage agreement acceptable to us and our principal and the conditions as set forth in the brokerage agreement are fully and unconditionally satisfied. Although all information furnished regarding property for sale, rental, or financing is from sources deemed reliable, such information has not been verified and no express representation is made nor is any to be implied as to the accuracy thereof and it is submitted subject to errors, omissions, change of price, rental or other conditions, prior sale, lease or financing, or withdrawal without notice and to any special conditions imposed by our principal.