

FOR LEASE

3712 Willow Ridge Rd, Lexington, KY 40514

\$1,400 /Month
(Includes CAM & Condo Fee)

Total Space Available: 1,400 SF

Rental Rate: \$1,400 /Month
(Includes CAM & Condo Fee. Tenant responsible for utilities, phone and internet.)

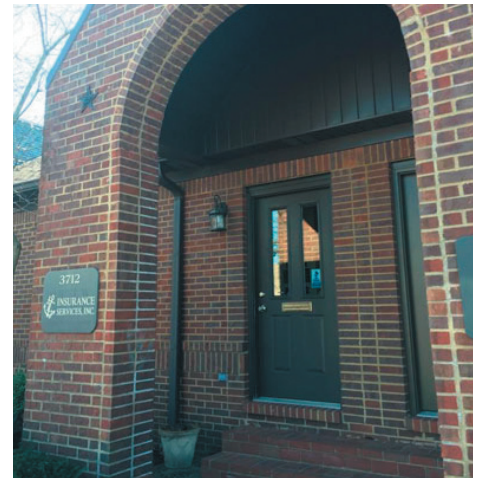
Property Type: Office

Property Sub-Type: Office Condo

Year Built: 1996

Building Class: B

Zoning: P-1 Professional Office



±1400 sf 2 story office condo in a quiet business park setting:

- 4 offices (executive office has a large closet).
- File room.
- Reception area.
- Kitchenette with break area.
- 1 restroom.
- 2 additional offices upstairs.
- Access to attic storage.
- Large parking lot.

This condo will be available Nov 1, 2019.
It is conveniently located on the South side behind Kroger off Man O'War in a business park setting.

Man O'War to Boston Rd, left on Millpond, left on Willow Ridge. Condo is in the second building on the right.

\$1,400/month includes CAM and condo fee.
Tenant responsible for utilities, phone and internet.



CHERI MCMULLIN

859-940-6483

cmcmullin@schradcommercial.com

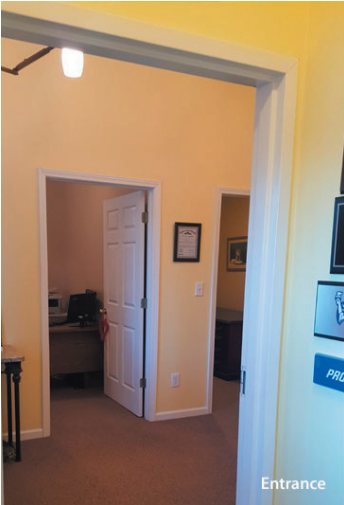
444 E Main Street, Suite 110
PO Box 21793 Lexington, KY 40522

SCHRADER
COMMERCIAL PROPERTIES, LLC

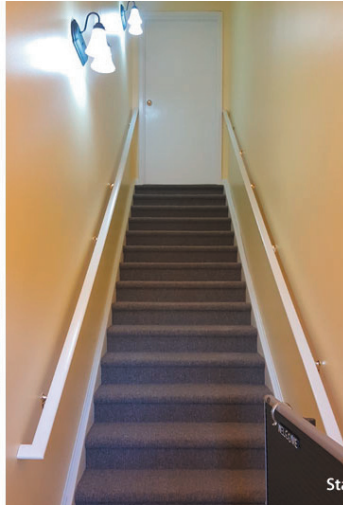
859-288-5008 / schradcommercial.com

The information contained herein is from sources believed, but not guaranteed to be reliable. Schrader Commercial Properties, LLC makes no representations or warranties regarding the property and you should conduct a careful independent investigation of the property to determine its suitability for your use and investment.

Property Photos



Entrance



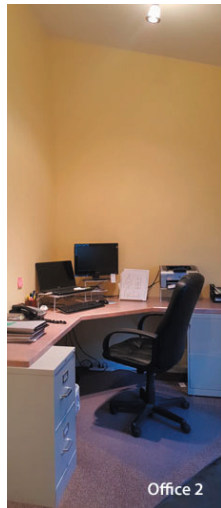
Stair



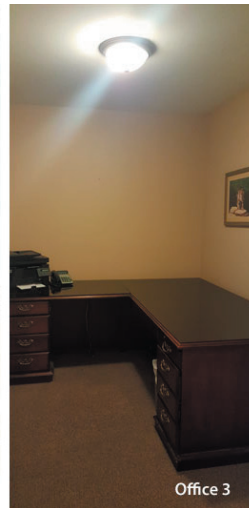
Lobby



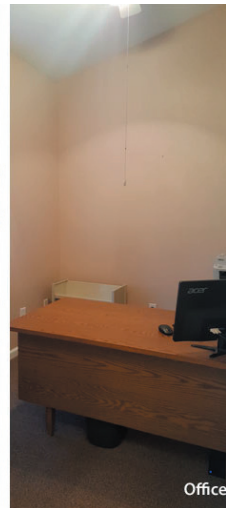
Office



Office 2



Office 3



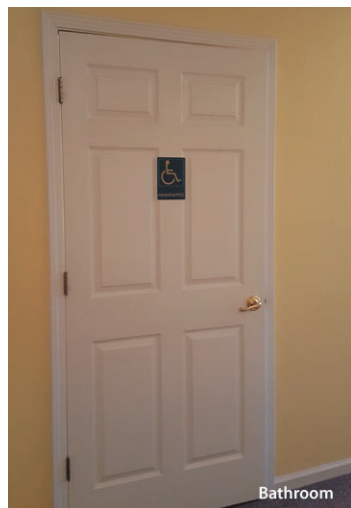
Office



Kitchenette



Break Area



Bathroom



File Room