

Available Medical Office Space for Lease

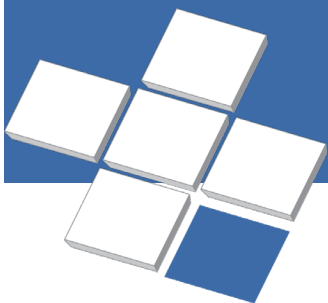
Arrowhead Physicians Plaza

18699 N 67th Ave, Glendale, AZ 85308



For Leasing Information:
Trey Trask
Senior Director of Leasing
Phone: 858-794-1900
ttrask@pmbres.com
www.pmbres.com
CA Lic. 01304141

- 43,745 SF 3-Story Medical Office Building
- On Campus of Tenet Health - Abrazo Arrowhead Hospital
- Walgreens Pharmacy directly next door
- Ample free surface and structure parking
- Convenient access to Arizona State Route 101
- Across from new future Phoenix Children's Hospital
- Abrazo Hospital Services:
Robotic Surgery, Diagnostic Imaging, Heart Care, Hyperbaric Chamber, Imaging, Mother & Baby, Women's Health, Oncology, Orthopedics, Rehabilitation Services, Stroke and Vascular Care, Surgical Services, Urology, Wound Care



PMB
Real Estate Services
Real Estate Management Solutions for Healthcare



1st Floor



Suite 140
6,188 RSF

For Leasing Information:
Trey Trask | Senior Director of Leasing
Phone: 858-794-1900 | TTrask@pmbres.com
www.pmbres.com | CA Lic. 01304141

2nd Floor



Suite 210
2,276 RSF

For Leasing Information:
Trey Trask | Senior Director of Leasing
Phone: 858-794-1900 | TTrask@pmbres.com
www.pmbres.com | CA Lic. 01304141

Suite 140 | ±6,188 RSF



140

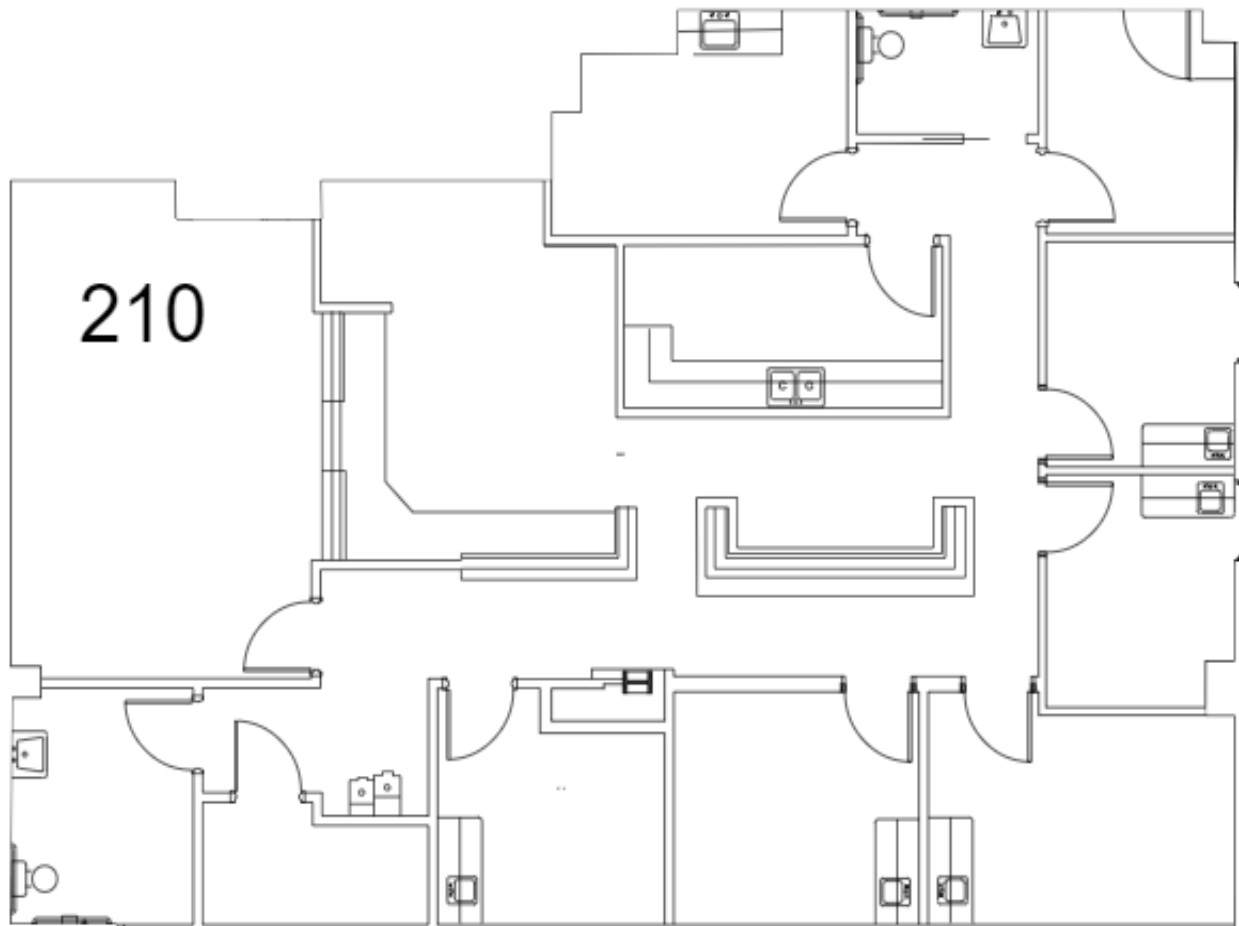
For Leasing Information:

Trey Trask | Senior Director of Leasing
Phone: 858-794-1900 | TTrask@pmbres.com
www.pmbres.com | CA Lic. 01304141



PMB Real Estate Services

Suite 210 | ±2,276 RSF



For Leasing Information:

Trey Trask | Senior Director of Leasing
Phone: 858-794-1900 | TTrask@pmbres.com
www.pmbres.com | CA Lic. 01304141



PMB Real Estate Services