

# 617

EASTLAKE

617 Eastlake Ave E, Seattle, WA 98109



**NEWMARK**

**CAVAN** | 206.395.2903  
**O'KEEFE** | [cavan.okeefe@nrmk.com](mailto:cavan.okeefe@nrmk.com)

**JESSE** | 206.452.4529  
**OTTELE** | [jesse.ottele@nrmk.com](mailto:jesse.ottele@nrmk.com)



# PROPERTY HIGHLIGHTS

---

- Prominent building identity with exterior signage available
- Excellent views of Lake Union and Downtown Seattle from all floors
- Exceptional freeway identity and access
- Ample on-site parking available
- Bike storage
- Shower facilities
- New state of the art bipolar ionization air purification system and MERV-13 filter installation
- Floors are fully wired with high-end improvements
- Steps from REI's Flagship, Cafe Hagen, Teinei Ramen & Sushi, Kati Vegan Thai, El Grito, Bentoful, MBar, Lunchbox Lab, Mala & Satay, Urban Gyro and Vitality Bowls





# TRANSPORTATION MAP



CAPITOL HILL

617  
EASTLAKE

SEATTLE CBD

SOUTH LAKE UNION

ELLIOTT BAY

LAKE UNION



EASTLAKE AVE F

I-5 EGRESS

I-5 INGRESS



# SUITE AVAILABILITIES

SUITE	RSF	AVAILABILITY
200	15,800 RSF	Available Now
210	2,224 RSF	Available Now
300	11,705 RSF	Available Now
400	1,907 - 8,455 RSF	Available Now
<b>Total: 38,184 RSF</b>		



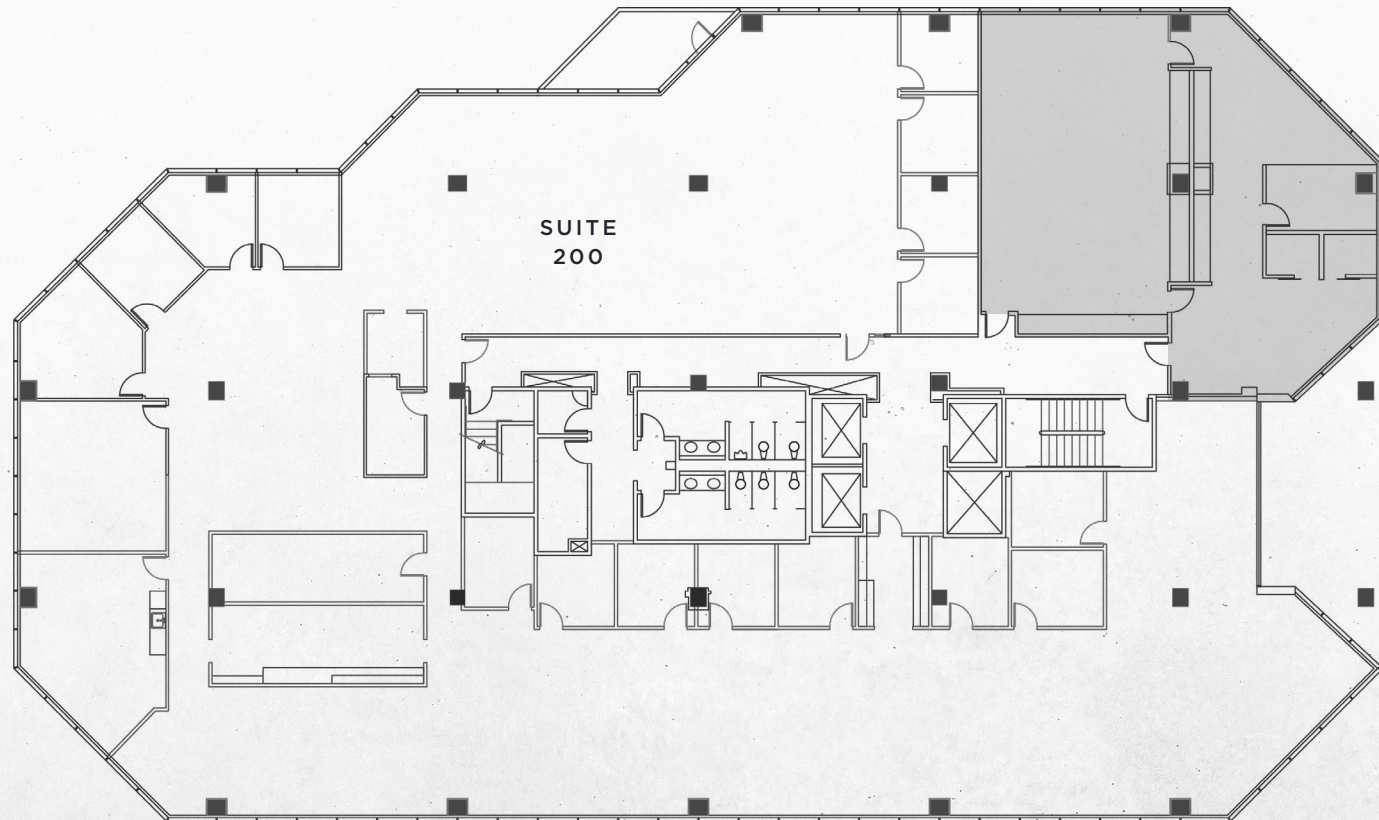


# SUITE 200

15,800 RSF | Available Now

Suites 200 + Suite 210 combineable to 18,024 RSF

ROY STREET



EASTLAKE AVENUE E



217

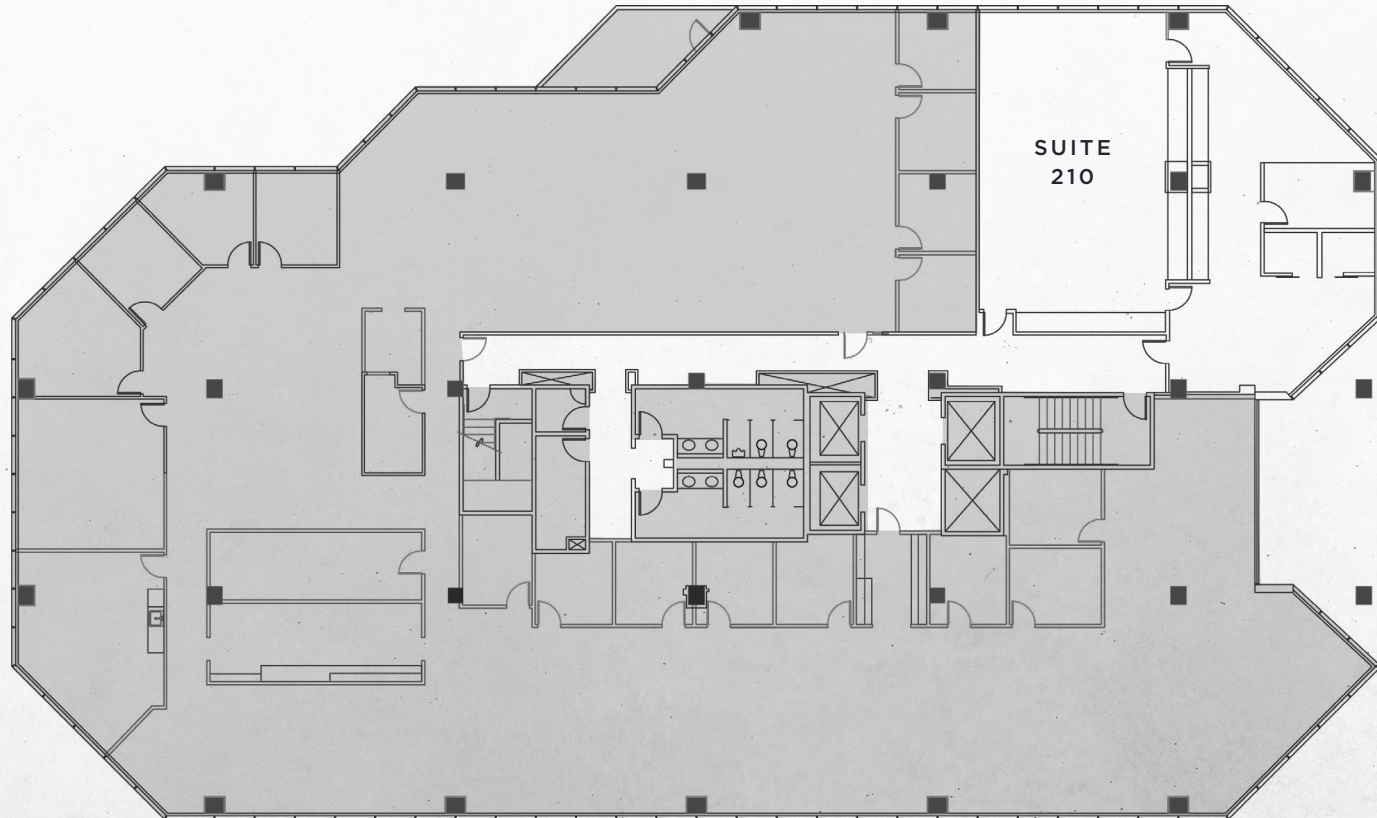


# SUITE 210

2,224 RSF | Available Now

Suites 200 + Suite 210 combineable to 18,024 RSF

ROY STREET



EASTLAKE AVENUE E



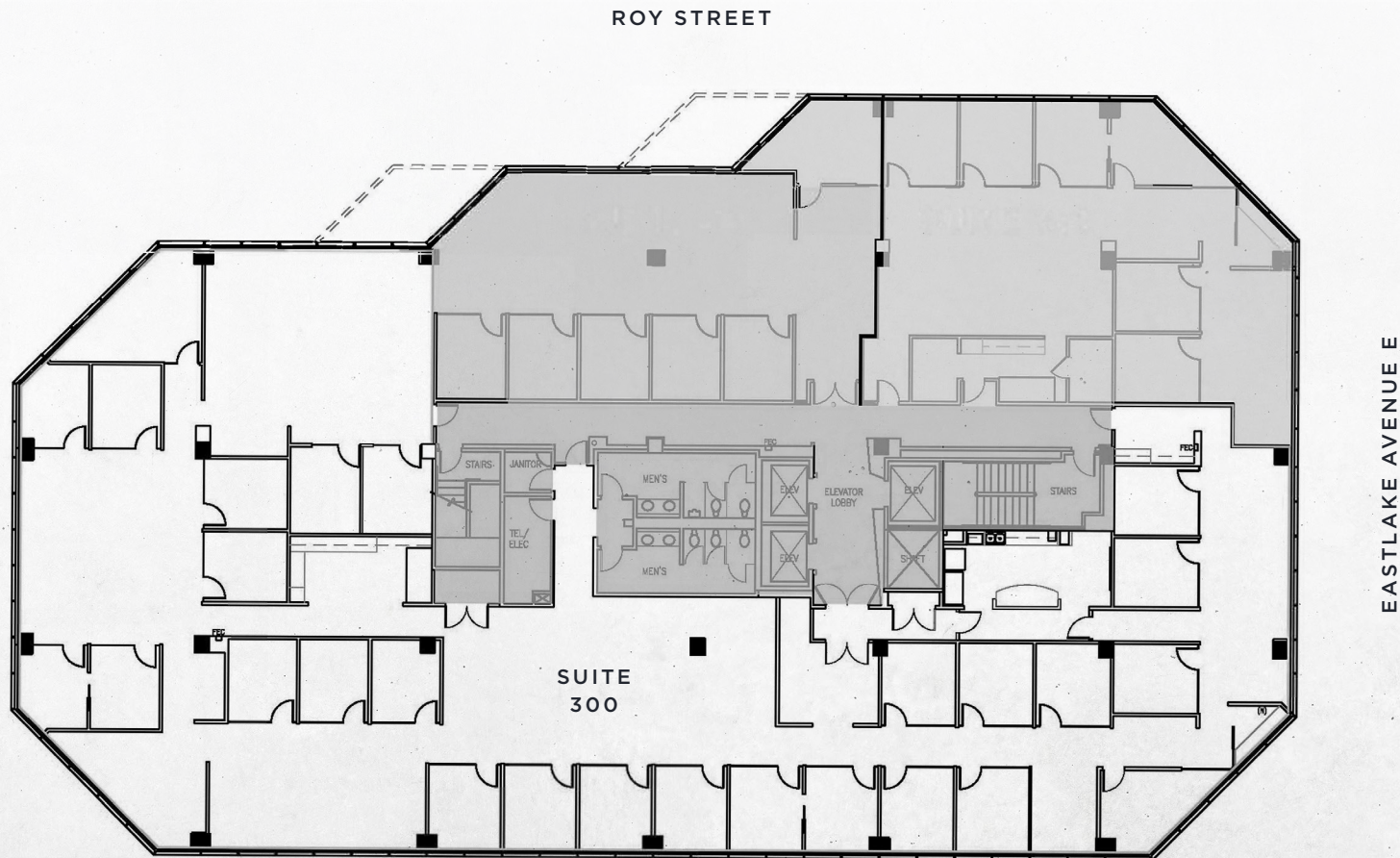
217



# SUITE 300

VIRTUAL TOUR

11,705 RSF | Available Now



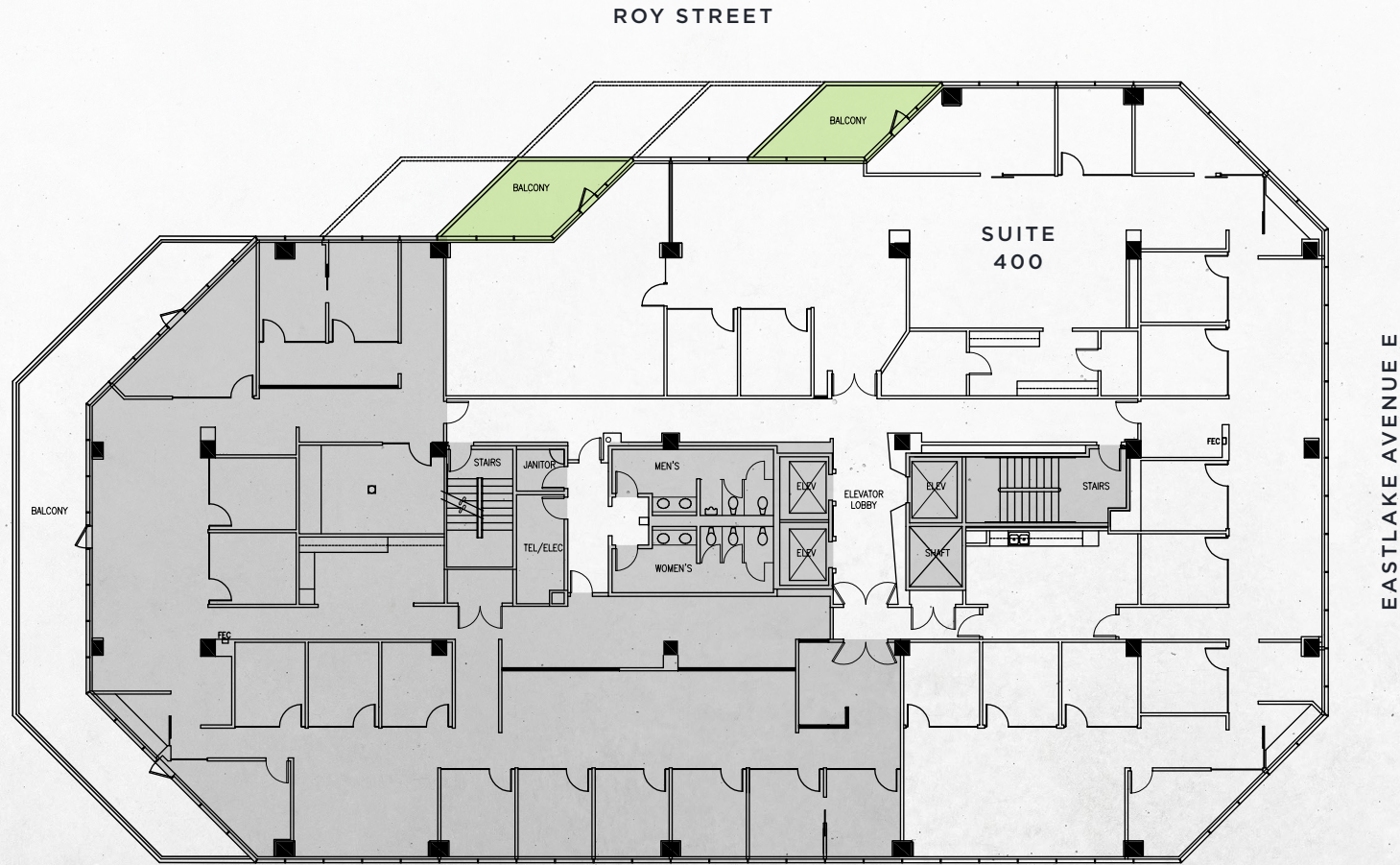
317



# SUITE 400

VIRTUAL TOUR

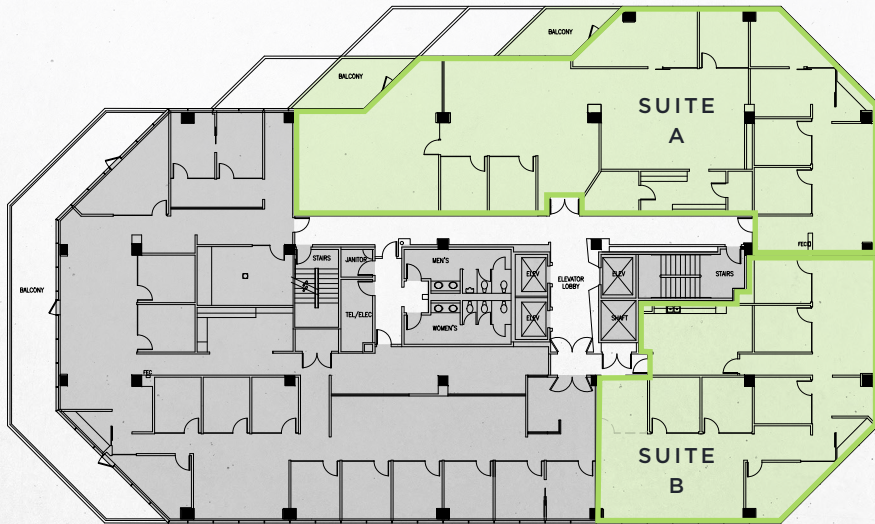
8,455 RSF | Available Now



317

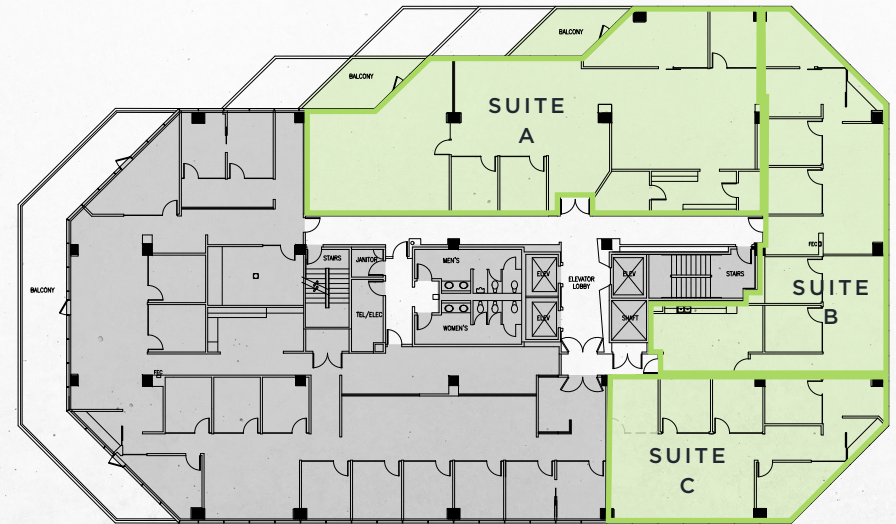


# SUITE 400 DEMISING OPTION



## 2 TENANT OPTION

Suite A	5,288 RSF
Suite B	3,167 RSF



## 3 TENANT OPTION

Suite A	3,897 RSF
Suite B	2,651 RSF
Suite C	1,907 RSF



617



# 617

## EASTLAKE

617 Eastlake Ave E, Seattle, WA 98109

## NEWMARK

**CAVAN O'KEEFE**

206.395.2903

[cavan.okeefe@nmrk.com](mailto:cavan.okeefe@nmrk.com)

**JESSE OTTELE**

206.452.4529

[jesse.ottele@nmrk.com](mailto:jesse.ottele@nmrk.com)

The information contained herein has been obtained from sources deemed reliable but has not been verified and no guarantee, warranty or representation, either express or implied, is made with respect to such information. Terms of sale or lease and availability are subject to change or withdrawal without notice.