

FOR LEASE
Airtite Professional Office/Medical Building

640 Rodi Road
 Pittsburgh PA 15235

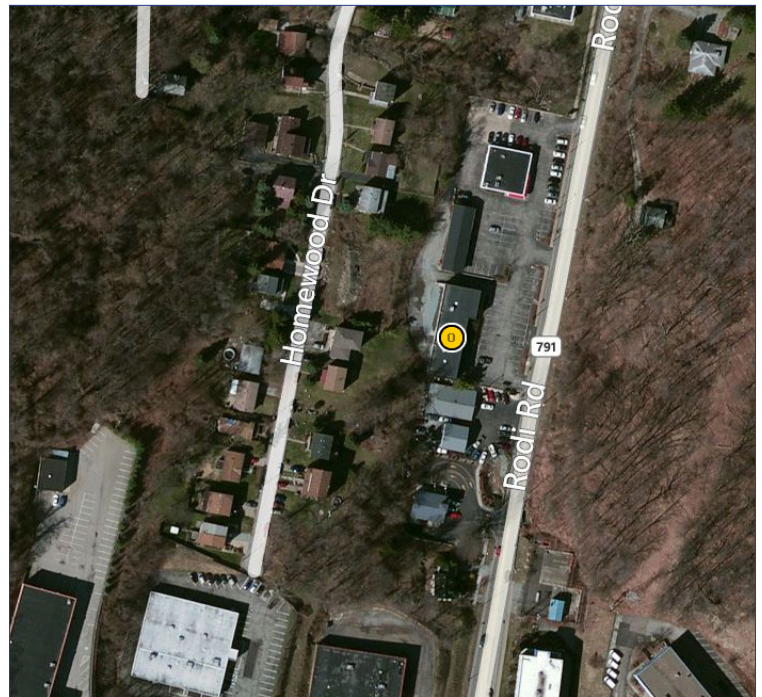


Property Highlights:

- Professional Office/Medical Building
- Size of Building: 6,000 Total Square Feet
- Available Space: Second Floor | 1,472 rentable square feet
- Brick/Stucco/Glass Commercial/Office Building
- Located near Parkway East (Route 376) and minutes to PA Turnpike and Route 22
- Ample free parking spaces in front paved lot and rear lot
- Zoned: M (Mixed use)
- High Traffic - Great Visibility
- Traffic Count: Approx. 26,000+/- vehicles per day
- Lease Price: 2nd Floor | \$10.50 psf + electric & janitorial

DEMOGRAPHICS

	1 Mile	3 Mile	5 Mile
2018 Population	6,968	81,789	207,955
Median HH Income	\$61,931	\$48,661	\$47,322



CONTACT:
 David Hanley
 Broker
 412.261.6532 x237
 david@prudentialrealty.com

PRC Commercial
 3700 South Water Street
 Suite 105
 Pittsburgh, PA 15203
 www.prudentialrealty.com

All information furnished regarding this property for sale, rental, or financing is from sources deemed reliable but no warranty or representation is made as to the accuracy thereof and same is submitted subject to errors, omissions, change of price, rental or other conditions prior to sale, lease, or financing or withdrawal without notice. PRC Commercial will make no representation and assume no obligation regarding the presence or absence of toxic or hazardous waste or substances or other undesirable material on or about the property which will ultimately be leased or purchased.