



**CUSHMAN &
WAKEFIELD**
Commerce

FOR LEASE

120 East 700 South
Clearfield, Utah



SPECIALIZED RAIL

Quality office space with a total of 5 offices, bullpen, conference room and break room

Property Highlights

- Size: 1,215 SF - 2,853 SF
- Lease Rate: \$10.00 per SF



Robert Lindsey
Branch Manager / Investment Specialist
+1 801 784 5313
rlindsey@comre.com

372 24th Street, Suite 320
Ogden, Utah 84401
Main +1 801 525 3000
Fax +1 801 525 9596
comre.com

Independently Owned and Operated / A Member of the Cushman & Wakefield Alliance

Cushman & Wakefield Copyright 2016. No warranty or representation, express or implied, is made to the accuracy or completeness of the information contained herein, and same is submitted subject to errors, omissions, change of price, rental or other conditions, withdrawal without notice, and to any special listing conditions imposed by the property owner(s). As applicable, we make no representation as to the condition of the property (or properties) in question.
(path: G:\1 - Projects\Ogden\Lindsey, R\1 - Flyers\120 East 700 South - Clearfield)

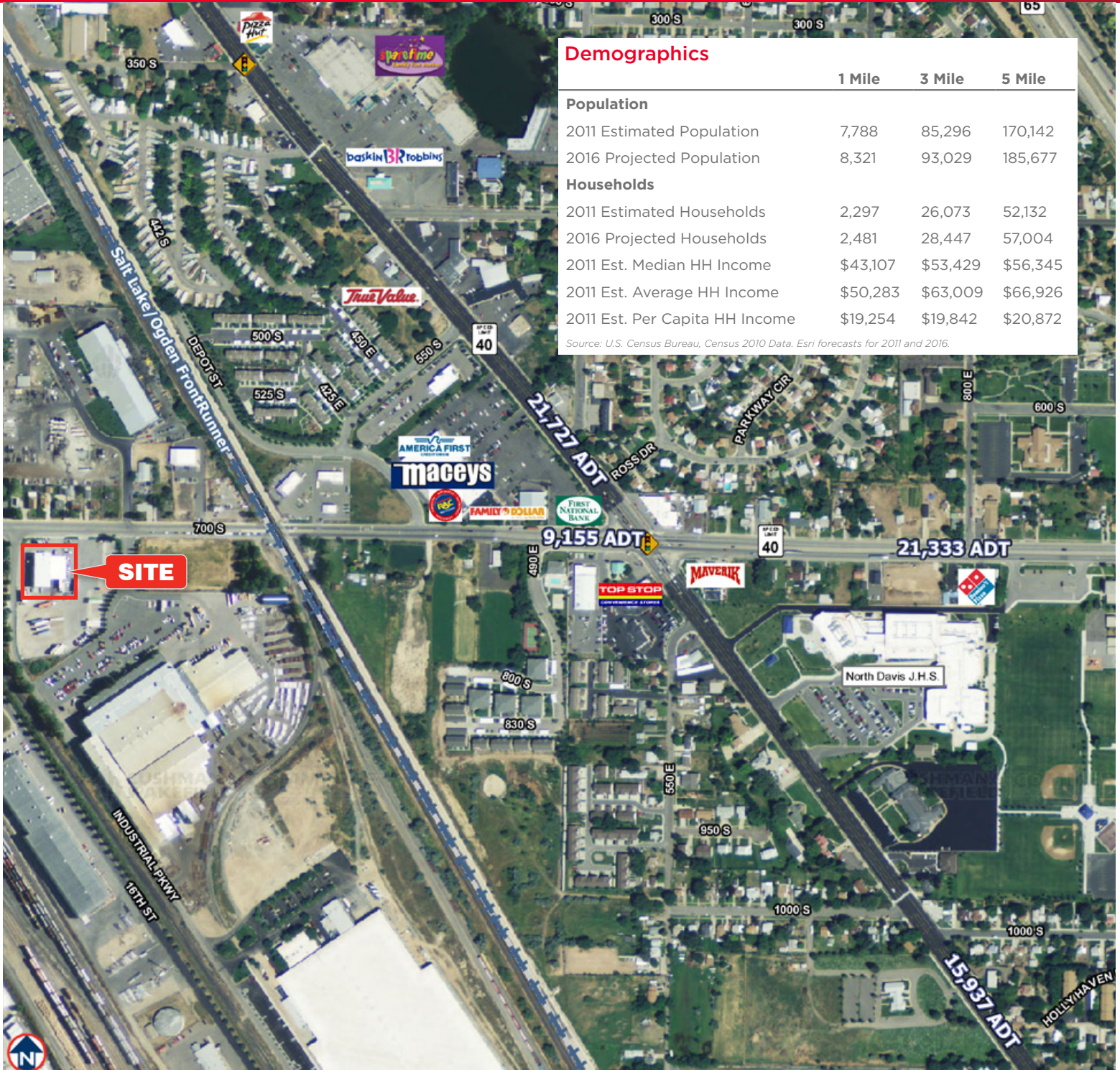


**CUSHMAN &
WAKEFIELD**
Commerce

FOR LEASE

120 East 700 South

Clearfield, Utah



Demographics			
	1 Mile	3 Mile	5 Mile
Population			
2011 Estimated Population	7,788	85,296	170,142
2016 Projected Population	8,321	93,029	185,677
Households			
2011 Estimated Households	2,297	26,073	52,132
2016 Projected Households	2,481	28,447	57,004
2011 Est. Median HH Income	\$43,107	\$53,429	\$56,345
2011 Est. Average HH Income	\$50,283	\$63,009	\$66,926
2011 Est. Per Capita HH Income	\$19,254	\$19,842	\$20,872

Source: U.S. Census Bureau, Census 2010 Data, Esri forecasts for 2011 and 2016.

Robert Lindsey
Branch Manager / Investment Specialist
+1 801 784 5313
rlindsey@comre.com

372 24th Street, Suite 320
Ogden, Utah 84401
Main +1 801 525 3000
Fax +1 801 525 9596
comre.com

Independently Owned and Operated / A Member of the Cushman & Wakefield Alliance

Cushman & Wakefield Copyright 2016. No warranty or representation, express or implied, is made to the accuracy or completeness of the information contained herein, and same is submitted subject to errors, omissions, change of price, rental or other conditions, withdrawal without notice, and to any special listing conditions imposed by the property owner(s). As applicable, we make no representation as to the condition of the property (or properties) in question.
(path: G:\1 - Projects\Ogden\Lindsey, R\1 - Flyers\120 East 700 South - Clearfield)