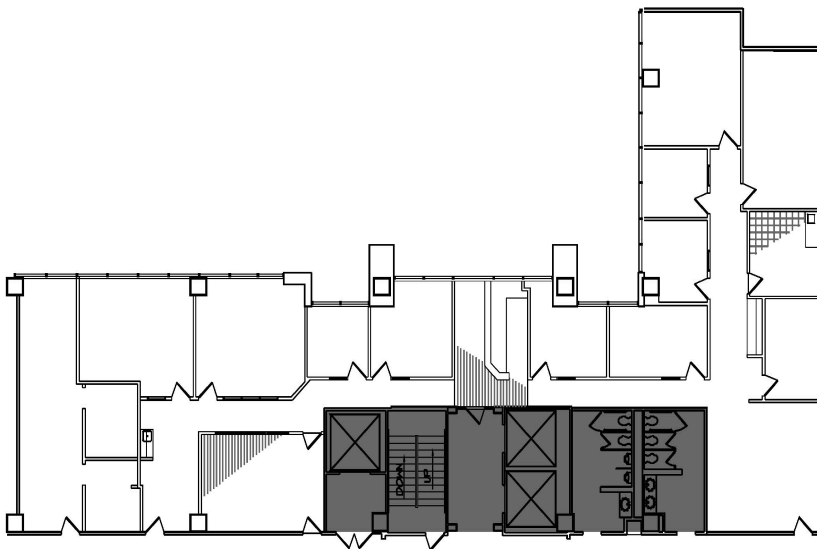


Park Springs Place

Suite 310

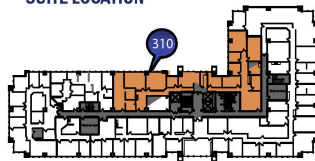
Floor 3
5,356 Sq Ft



SUITE & BUILDING FEATURES

Located near Green Oaks Blvd. at Spur 303, Pioneer Parkway, close proximity to restaurants and retail shopping

SUITE LOCATION



MadisonMarquette
A Capital Guidance Company

2828 Routh Street, Suite 700
Dallas, Texas 75201

Kurt Cherry: 972.208.0502 kcherry@pmrg.com

This information has been obtained from sources believed reliable. We have not verified it and make no guarantee, warranty or representation about it. Any projections, opinions, assumptions or estimates used are for example only and do not represent the current or future performance of the property. You and your advisors should conduct a careful, independent investigation of the property to determine your satisfaction with the suitability of the property for your needs. All square footages are approximate and subject to change.