

Free-Standing Building

1923 W Peoria Avenue
Phoenix, AZ

±3,846 SF available

Peoria Avenue frontage

Three 12'x8' roll-up doors

One 12'x14' roll-up door

400 amps, 120/208 volt,
3-phase power

Air-conditioned warehouse area

C-3 zoning, City of Phoenix

Built in 1986

21,891 VPD on Peoria Avenue

29,342 VPD on 19th Avenue

Asking Price: \$375,000



Location



Contact

Eric Bell, SIOR

602.513.5151

ebell@kiddermathews.com

Mike Ciosek, SIOR

602.513.5135

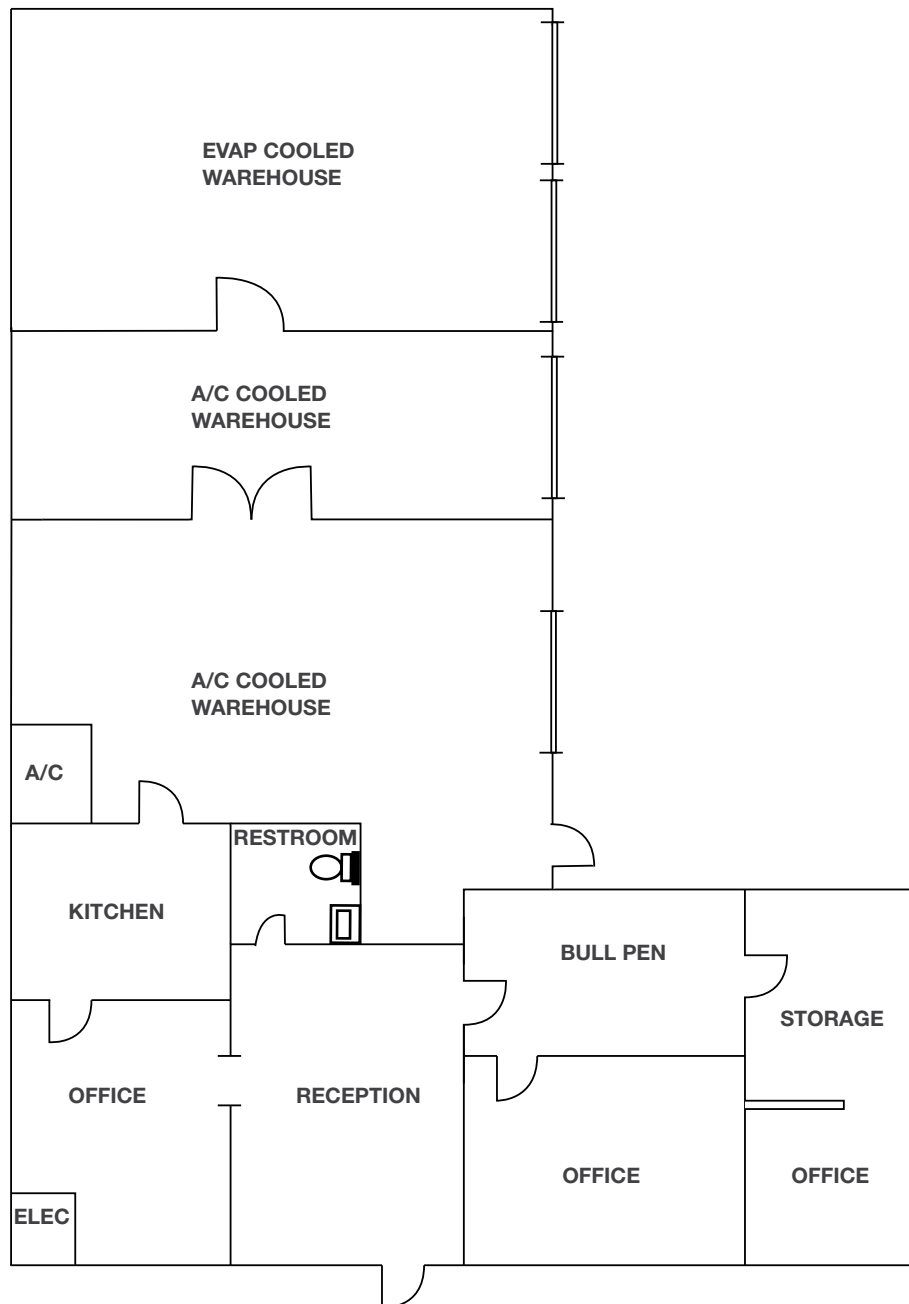
mciosek@kiddermathews.com

Dylan Scott

602.513.5104

dscott@kiddermathews.com

Floor Plan



Contact

Eric Bell, SIOR
602.513.5151
ebell@kiddermathews.com

Mike Ciosek, SIOR
602.513.5135
mciosek@kiddermathews.com

Dylan Scott
602.513.5104
dscott@kiddermathews.com