

FOR LEASE

21050 N. 9TH PLACE, SUITE 311
PHOENIX, ARIZONA

Voit
REAL ESTATE SERVICES



END CAP SUITE AVAILABLE

PROPERTY FEATURES

SIZE:	±18,872 Total Building Square Footage ±4,405 SF End Cap Suite Available
PARKING RATIO:	5:1,000 (including covered)
ZONING:	A-1, Light Industrial, City of Phoenix
YEAR BUILT:	2010
SUBMARKET:	Deer Valley / North Phoenix
LEASE RATE:	\$0.75 PSF NNN
HIGHLIGHTS:	<ul style="list-style-type: none">• 100% Air-Conditioned• Access to major freeways (Loop 101, I-17, SR51)• Mixed use environment for tenant support services• Proximity to Deer Valley Airport, FBI Headquarters



For more information, contact:

MIKE CIOSEK
Senior Vice President
602.513.5135
mciosek@voitco.com

ERIC BELL
Senior Vice President
602.513.5151
ebell@voitco.com

2555 E. Camelback Rd., Suite 100, Phoenix, AZ 85016 • 602.952.8648 • 602.952.8649 Fax • Lic #01333376 | www.voitco.com

The information contained herein has been obtained from sources we deem reliable. While we have no reason to doubt its accuracy, we do not guarantee it. ©2013 Voit Real Estate Services, Inc. All Rights Reserved. Real People. Real Solutions.® is a registered trademark of Voit Real Estate Services.

Real People. Real Solutions.®

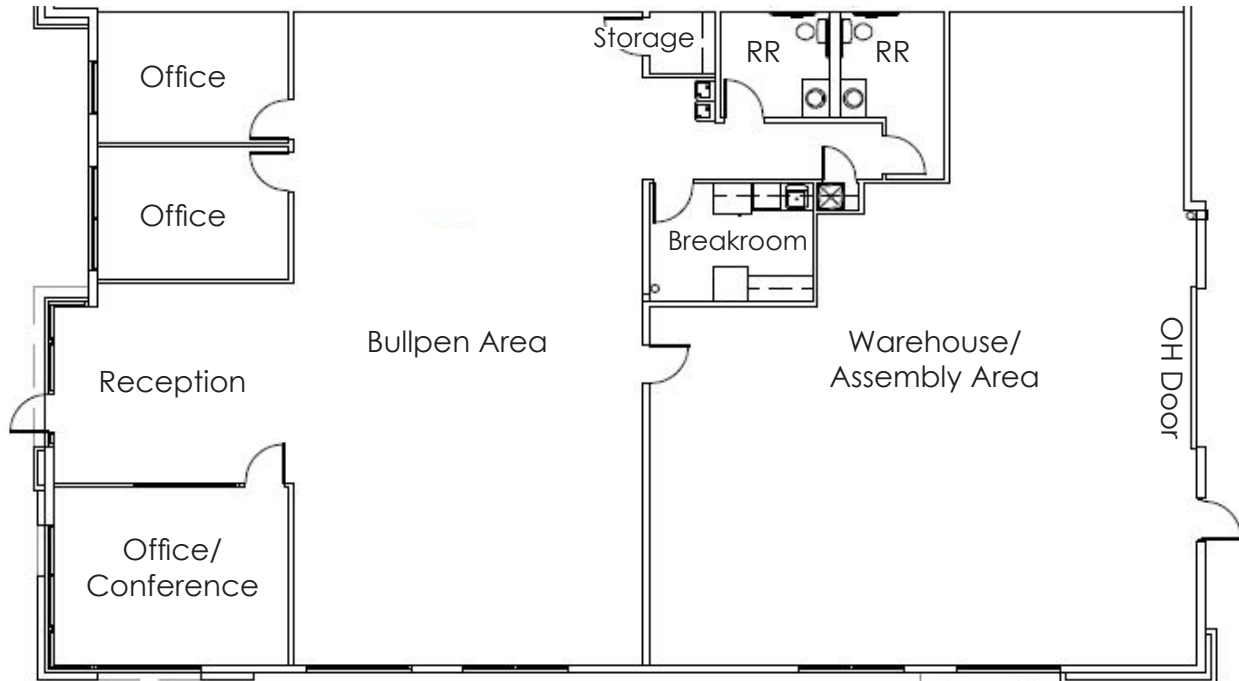
FOR LEASE

21050 N. 9TH PLACE, SUITE 311
PHOENIX, ARIZONA

Voit

REAL ESTATE SERVICES

Floor Plan:



For more information, contact:

MIKE CIOSEK
Senior Vice President
602.513.5135
mciosek@voitco.com

ERIC BELL
Senior Vice President
602.513.5151
ebell@voitco.com

2555 E. Camelback Rd., Suite 100, Phoenix, AZ 85016 • 602.952.8648 • 602.952.8649 Fax • Lic #01333376 | www.voitco.com

The information contained herein has been obtained from sources we deem reliable. While we have no reason to doubt its accuracy, we do not guarantee it.
©2013 Voit Real Estate Services, Inc. All Rights Reserved. Real People. Real Solutions.® is a registered trademark of Voit Real Estate Services.

Real People. Real Solutions.®